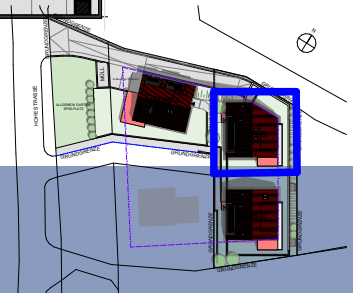
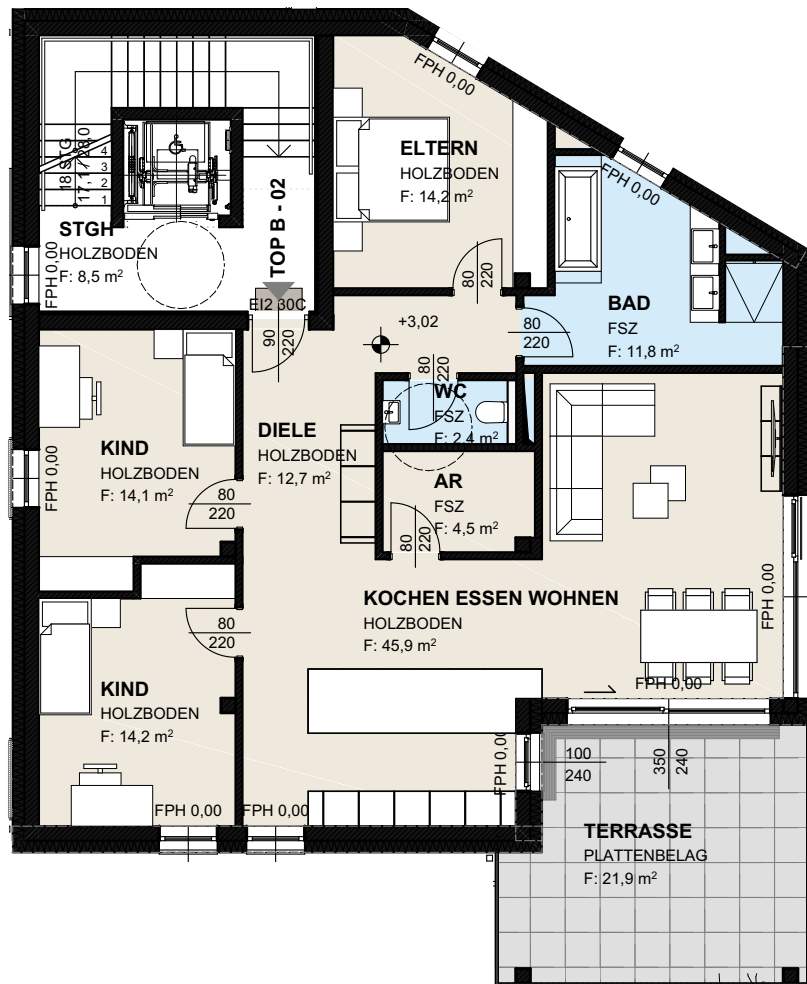
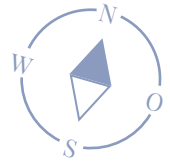


# Haus Birnenbaum



## TOP 02 - OBERGESCHOSS

Diele	12,70 m <sup>2</sup>	AR	4,50 m <sup>2</sup>
Bad	11,80 m <sup>2</sup>	<b>gesamte Wohnfläche</b>	<b>119,80 m<sup>2</sup></b>
WC	2,40 m <sup>2</sup>		
Kind 1	14,10 m <sup>2</sup>	Terrasse	21,90 m <sup>2</sup>
Kind 2	14,20 m <sup>2</sup>	Keller	7,80 m <sup>2</sup>
Eltern	14,20 m <sup>2</sup>		
Kochen/Essen/Wohnen	45,90 m <sup>2</sup>		