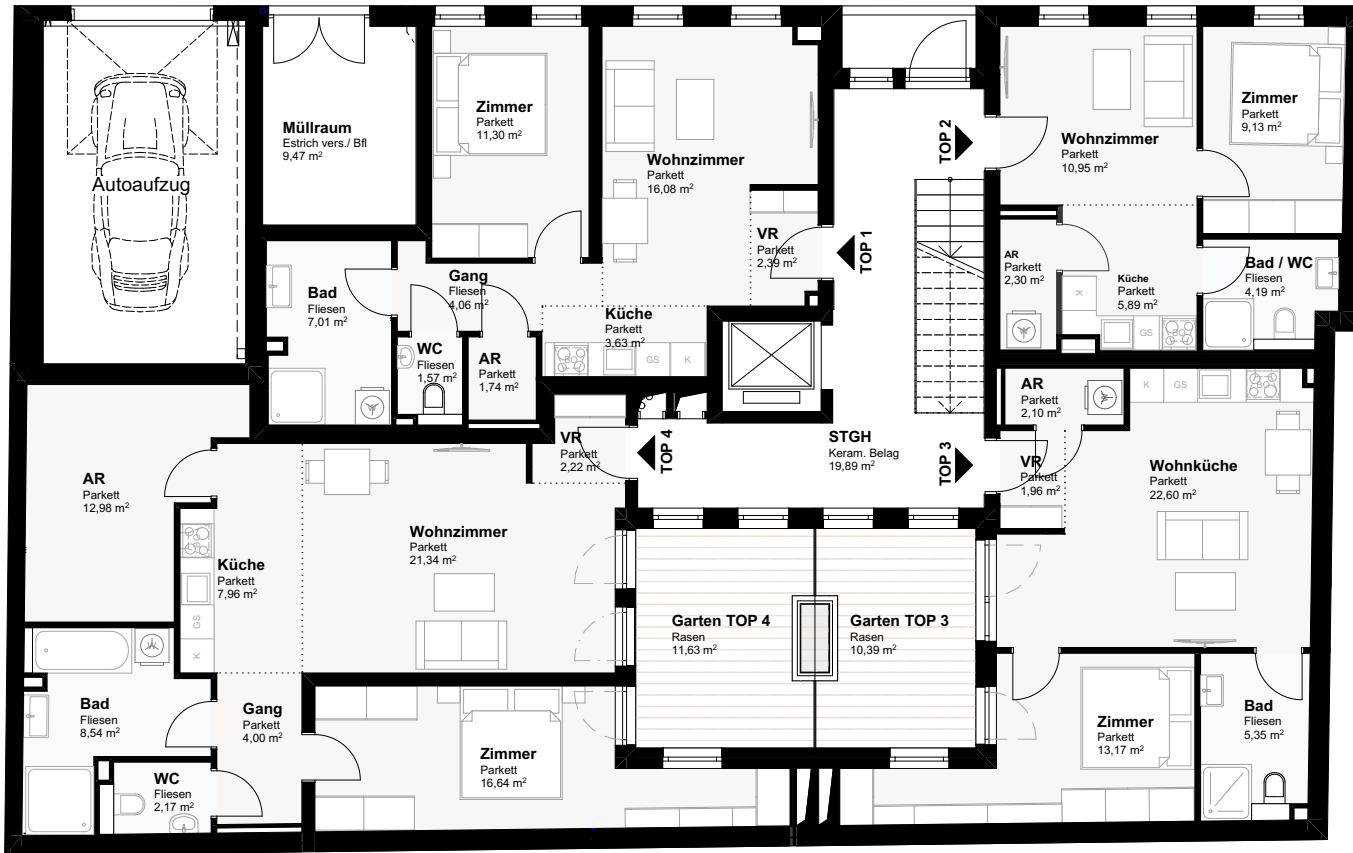
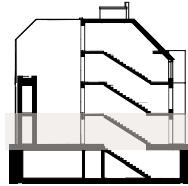
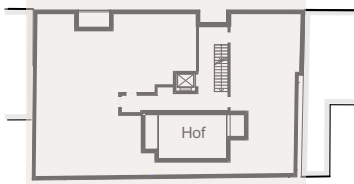
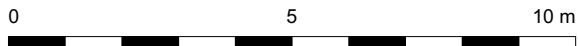


Strebersdorfer Strasse 135



TOP 1			
EG	AR		1,74
EG	Bad		7,01
EG	Gang		4,06
EG	Küche		3,63
EG	VR		2,39
EG	WC		1,57
EG	Wohnzimmer		16,08
EG	Zimmer		11,30
			<b>47,78 m<sup>2</sup></b>
TOP 2			
EG	AR		2,30
EG	Bad / WC		4,19
EG	Küche		5,89
EG	Wohnzimmer		10,95
EG	Zimmer		9,13
			<b>32,46 m<sup>2</sup></b>
TOP 3			
EG	AR		2,10
EG	Bad		5,35
EG	VR		1,96
EG	Wohnküche		22,60
EG	Zimmer		13,17
			<b>45,18 m<sup>2</sup></b>
EG	Garten		10,39
			<b>10,39 m<sup>2</sup></b>
TOP 4			
EG	AR		12,98
EG	Bad		8,54
EG	Gang		4,00
EG	Küche		7,96
EG	VR		2,22
EG	WC		2,17
EG	Wohnzimmer		21,34
EG	Zimmer		16,64
			<b>75,85 m<sup>2</sup></b>
EG	Garten		11,63
			<b>11,63 m<sup>2</sup></b>



# Verkaufsplan

1210 Wien - Strebersdorfer Straße 135

ERDGESCHOSS