

WIPLINGERSTRASSE

WOHNKÜCHE  
46,35 m<sup>2</sup>

ENTRÉE  
16,41 m<sup>2</sup>

BÜRO  
11,90 m<sup>2</sup>

LICHTHOF

BAD  
5,80 m<sup>2</sup>

WC  
3,76 m<sup>2</sup>

BAD/WC  
6,03 m<sup>2</sup>

WOHNKÜCHE  
65,63 m<sup>2</sup>

VORRAUM  
15,39 m<sup>2</sup>

ZIMMER  
21,77 m<sup>2</sup>

ZIMMER  
26,04 m<sup>2</sup>

ZIMMER  
15,94 m<sup>2</sup>

TIEFER GRABEN

124  
236

124  
236

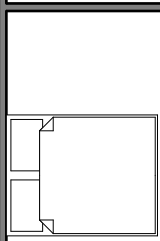
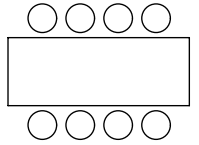
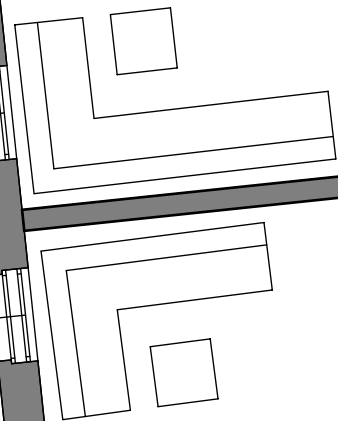
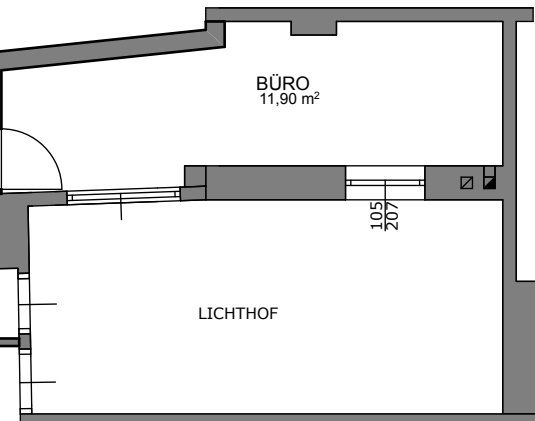
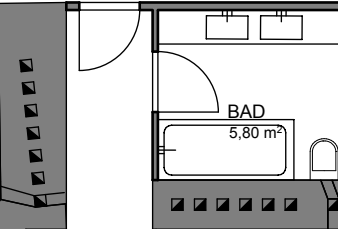
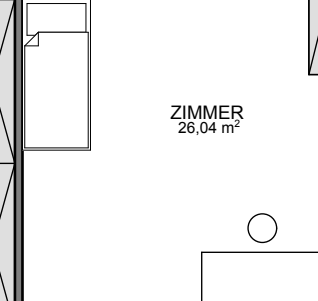
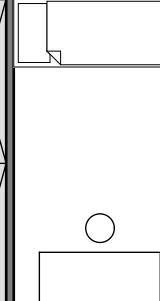
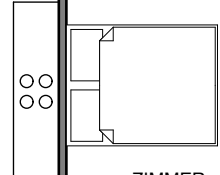
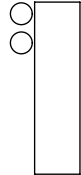
124  
236

124  
236

124  
236

124  
236

124  
236



124  
236

124  
236

124  
236

124  
236

124  
236

TOP 1a  
TOP 1b

TR  
WM

501