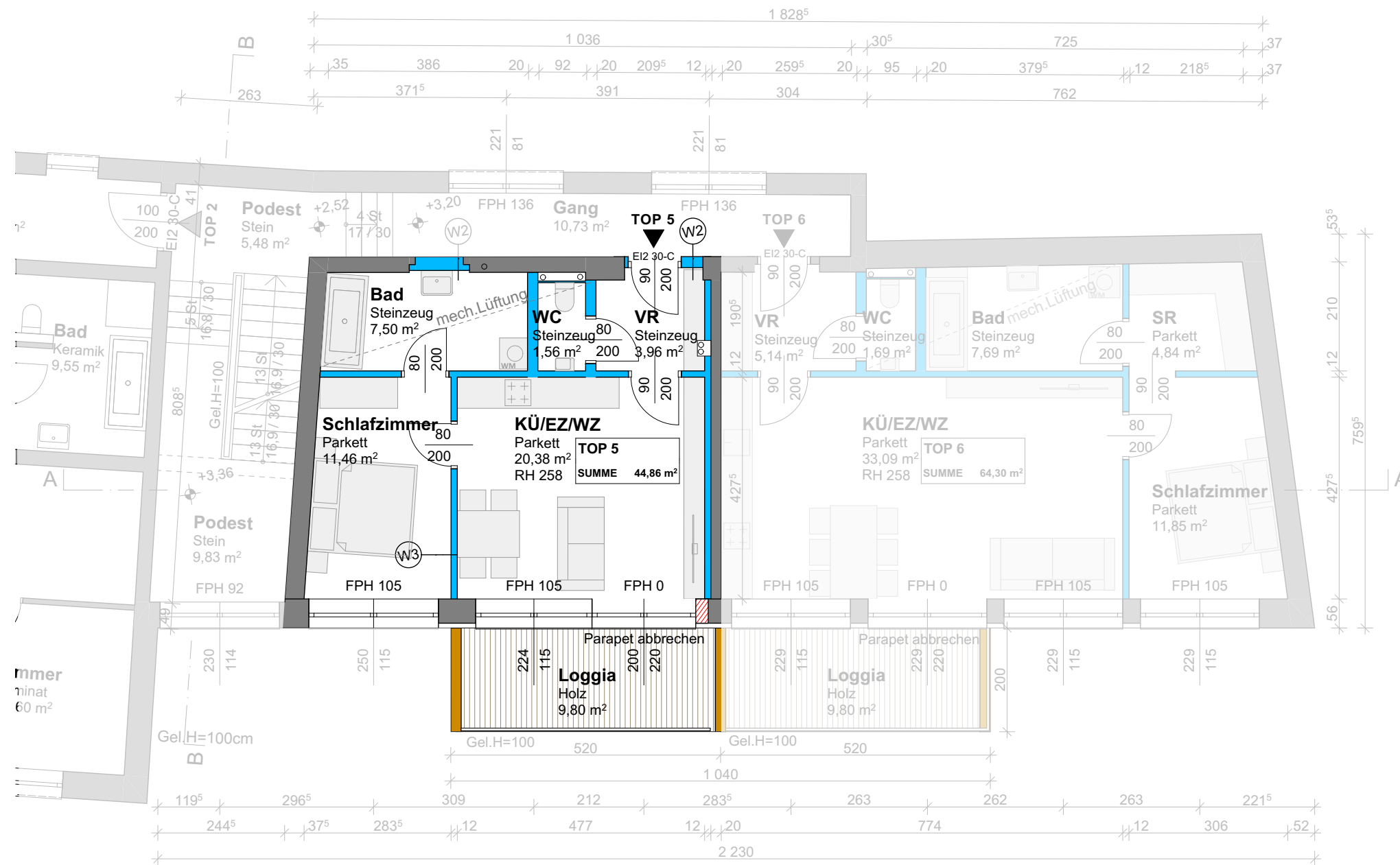
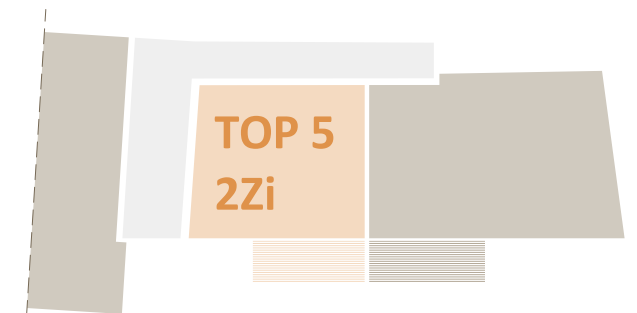


TOP 5 | 44,86m²

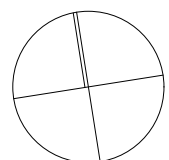


1. OBERGESCHOSS



2 ZIMMER | LOGGIA

Vorraum	3,96m ²
WC	1,56m ²
Bad	7,50m ²
Wohn- / Essküche	20,38m ²
Schlafzimmer	11,46m ²
Loggia	9,80m ²



1. OBERGESCHOSS
M 1:100 bei Plangröße A3

ARCHIONIC Immobilien GmbH
Projekt: Windischgarsten | Angerhofweg 1