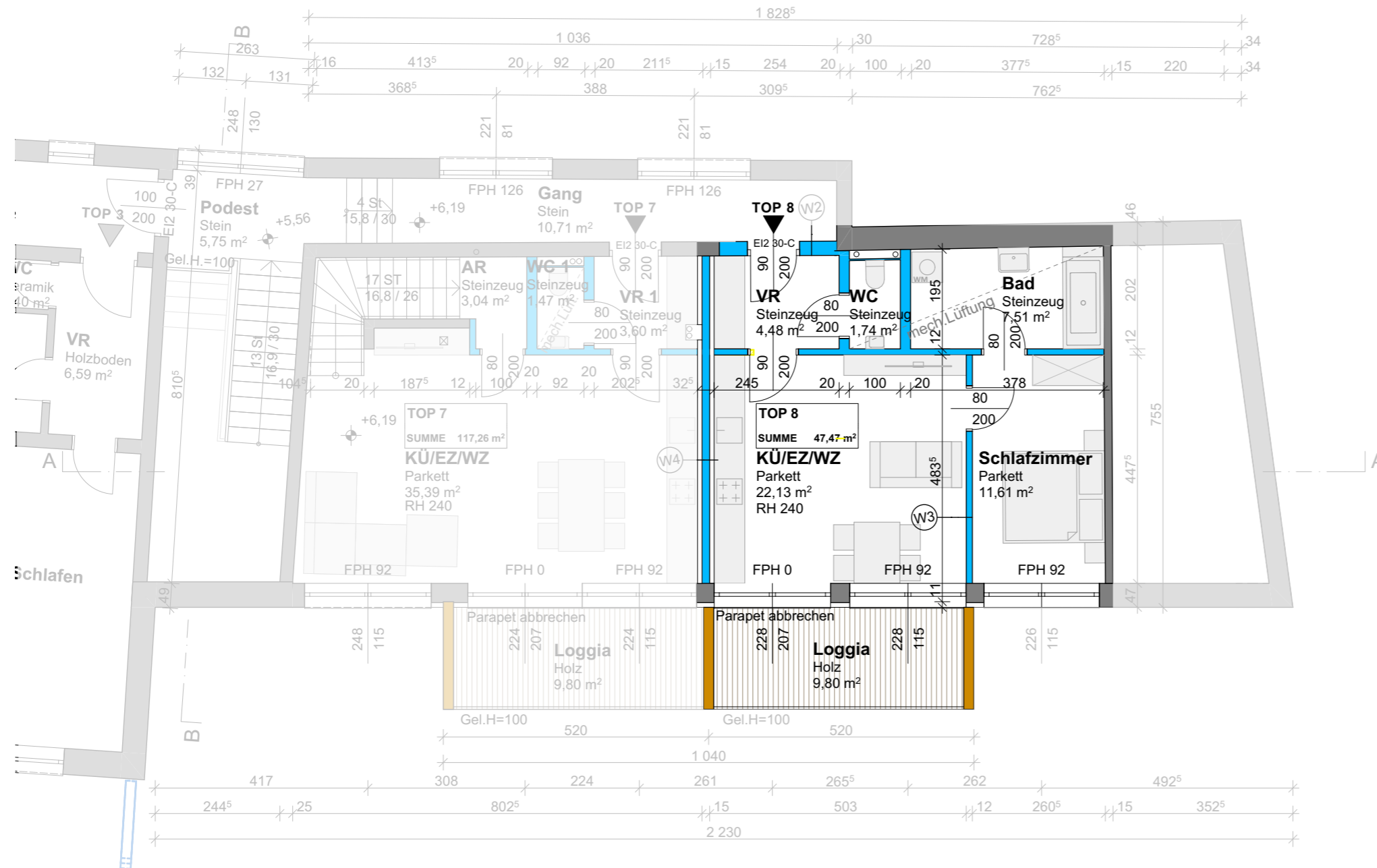
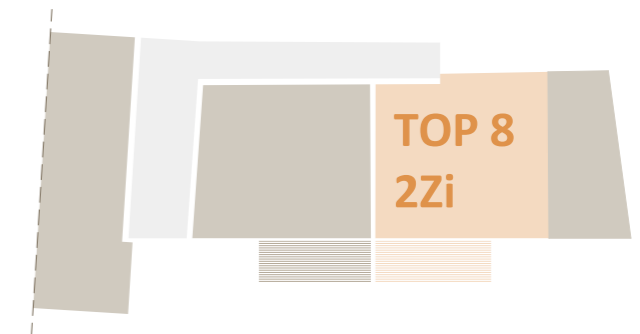


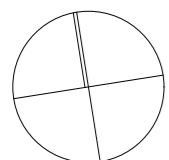
TOP 8 | 47,47m²

2. OBERGESCHOSS



2 ZIMMER | LOGGIA

Vorraum	4,48m ²
WC	1,74m ²
Bad	7,51m ²
Wohn- / Essküche	22,13m ²
Schlafzimmer	11,61m ²
Loggia	9,80m ²



2. OBERGESCHOSS
M 1:100 bei Plangröße A3

ARCHIONIC Immobilien GmbH
Projekt: Windischgarsten | Angerhofweg 1