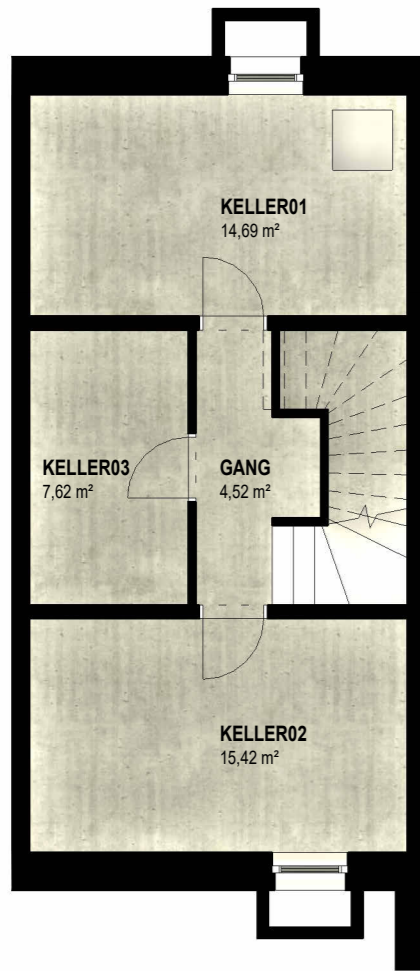
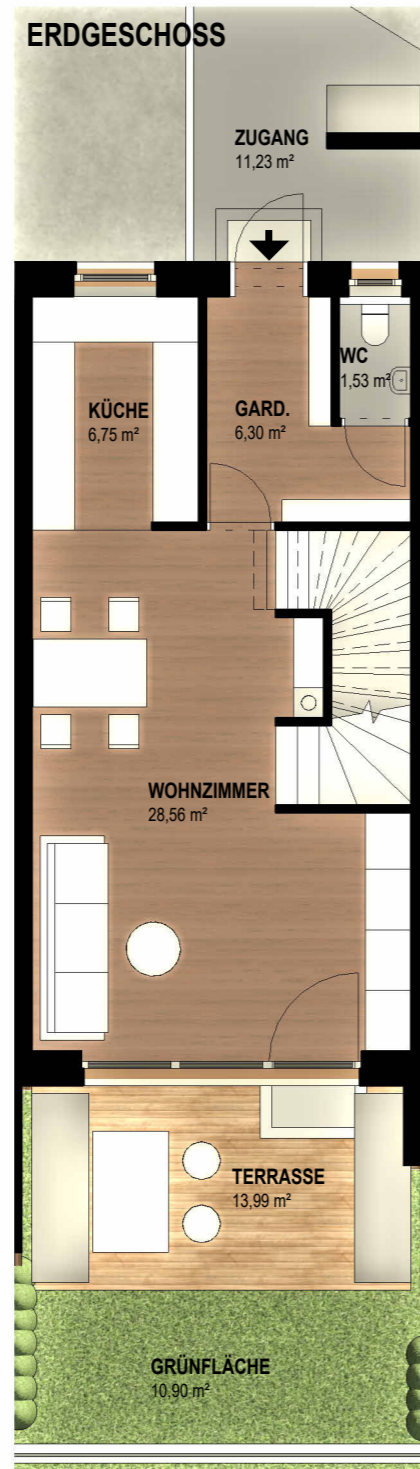


### KELLERGESCHOSS



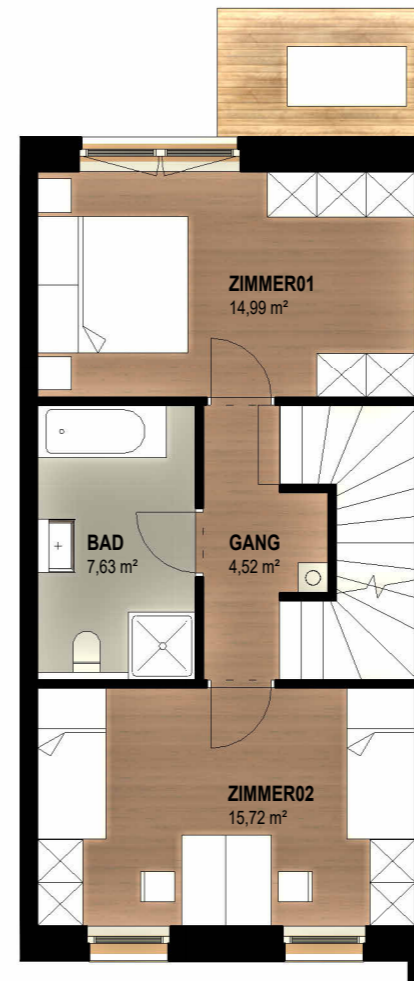
|                      |                       |
|----------------------|-----------------------|
| GANG                 | 4,52 m <sup>2</sup>   |
| KELLER01             | 14,69 m <sup>2</sup>  |
| KELLER02             | 15,42 m <sup>2</sup>  |
| KELLER03             | 7,62 m <sup>2</sup>   |
| 42,26 m <sup>2</sup> |                       |
| GARD.                | 6,30 m <sup>2</sup>   |
| KÜCHE                | 6,75 m <sup>2</sup>   |
| WC                   | 1,53 m <sup>2</sup>   |
| WOHNZIMMER           | 28,56 m <sup>2</sup>  |
| 43,14 m <sup>2</sup> |                       |
| BAD                  | 7,63 m <sup>2</sup>   |
| GANG                 | 4,52 m <sup>2</sup>   |
| ZIMMER01             | 14,99 m <sup>2</sup>  |
| ZIMMER02             | 15,72 m <sup>2</sup>  |
| 42,86 m <sup>2</sup> |                       |
| MZWK STUDIO          | 27,95 m <sup>2</sup>  |
| 27,95 m <sup>2</sup> |                       |
| WNF                  | 113,95 m <sup>2</sup> |
| GESAMT               | 156,21 m <sup>2</sup> |

### ERDGESCHOSS



|            |  |
|------------|--|
| TERRASSE   | 13,99 m <sup>2</sup>                   |
| GRÜNFLÄCHE | 10,90 m <sup>2</sup>                   |
| ZUGANG     | 11,23 m <sup>2</sup>                   |
| P1T4       | 5,00 m x 2,50 m = 12,50 m <sup>2</sup> |
| P2T4       | 5,00 m x 2,50 m = 12,50 m <sup>2</sup> |
| GESAMT     | 25,00 m <sup>2</sup>                   |

### OBERGEHOSS



### DACHGESCHOSS



ÜBERSICHT 1:500

## MEHRFAMILIENHAUS GERETSBERG

WILDER KAISER GOLFHOTEL-  
ERRICHTUNGSGESELLSCHAFT m.b.H

TOP 04

1:100

PROJ-NR:

PLAN-NR:

DATUM:

GEZ:

-

VP-04

2024-10-07

ALHU

UNTERE DORFSTRASSE 32  
6321 ANGATH  
+43 650 7500770  
geiger@arcusbau.at