



modernes wohnen · perg



Verkaufspläne | stand 11.2024

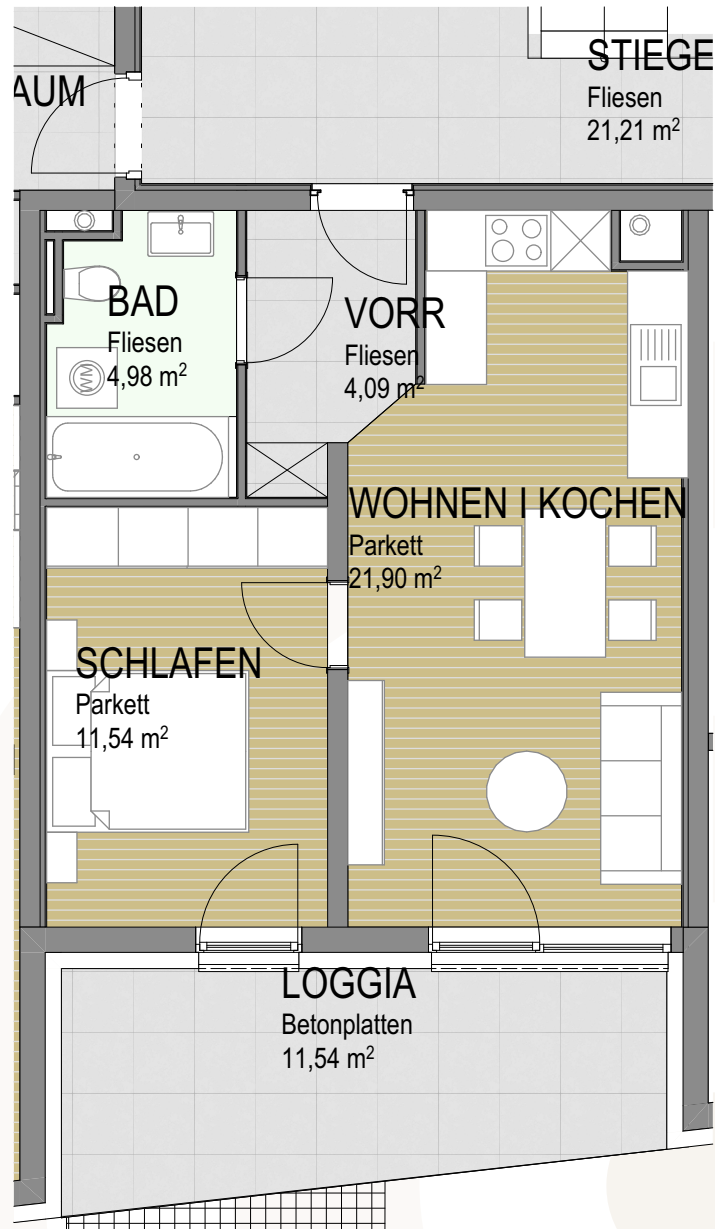
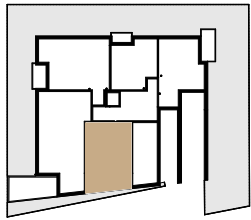
Die vorliegenden Planunterlagen dienen der groben Orientierung und können in Fläche und Aufteilung vom Ist-Stand abweichen. Der Vermittler übernimmt für die Richtigkeit keinerlei Haftung. Die abgebildeten Möbel und Einrichtungsgegenstände sind lediglich symbolhaft dargestellt und nicht Teil der Immobilie. KEIN MASSSTAB! Das dargestellte Werk ist urheberrechtlich geschützt. Die Werknutzungsrechte verbleiben beim angeführten Verfasser. Änderungen & Weitergabebedarf deren Zustimmung.

TOP 1

Erdgeschoss

Wohnfläche 42,51 m²

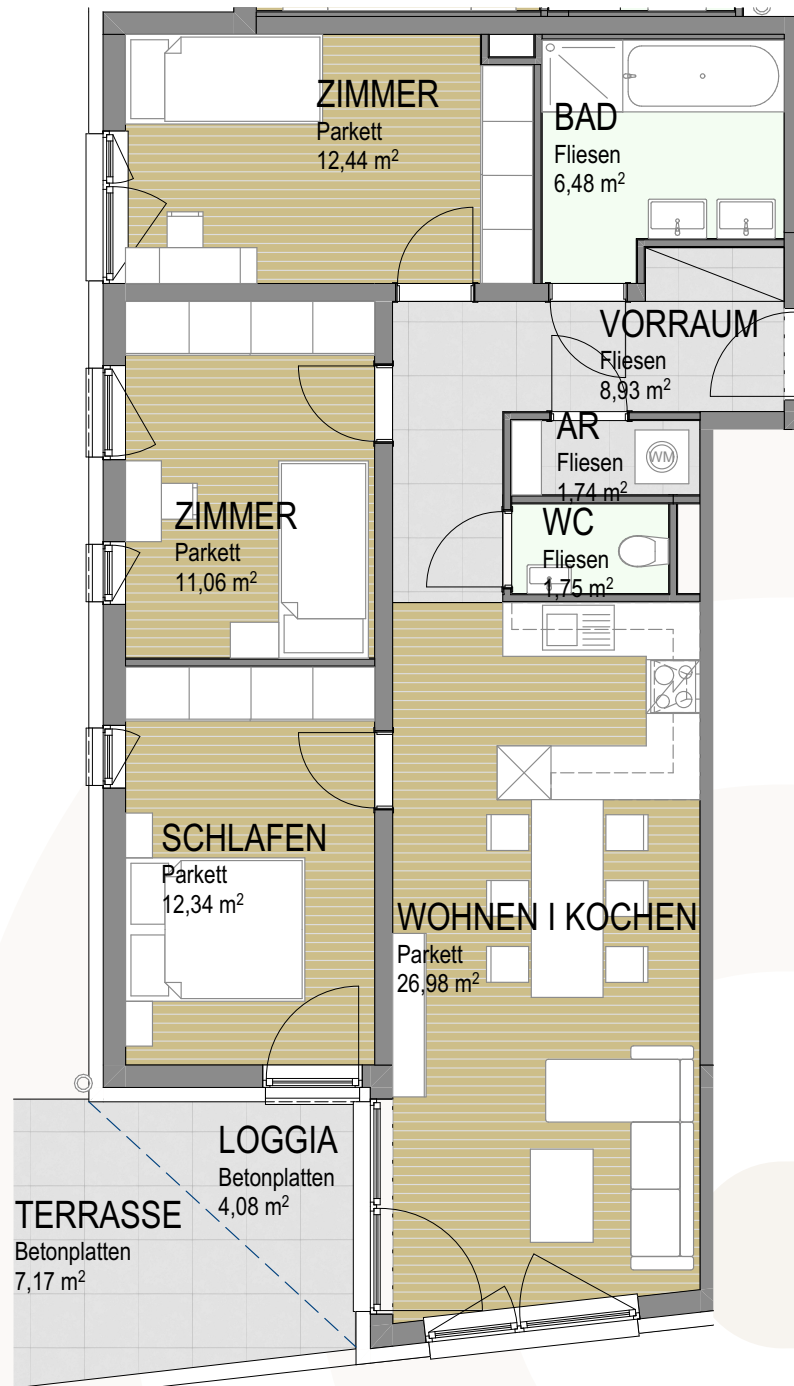
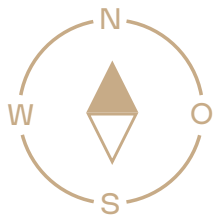
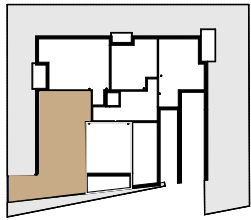
Loggia 11,54 m²



TOP 2

Erdgeschoss

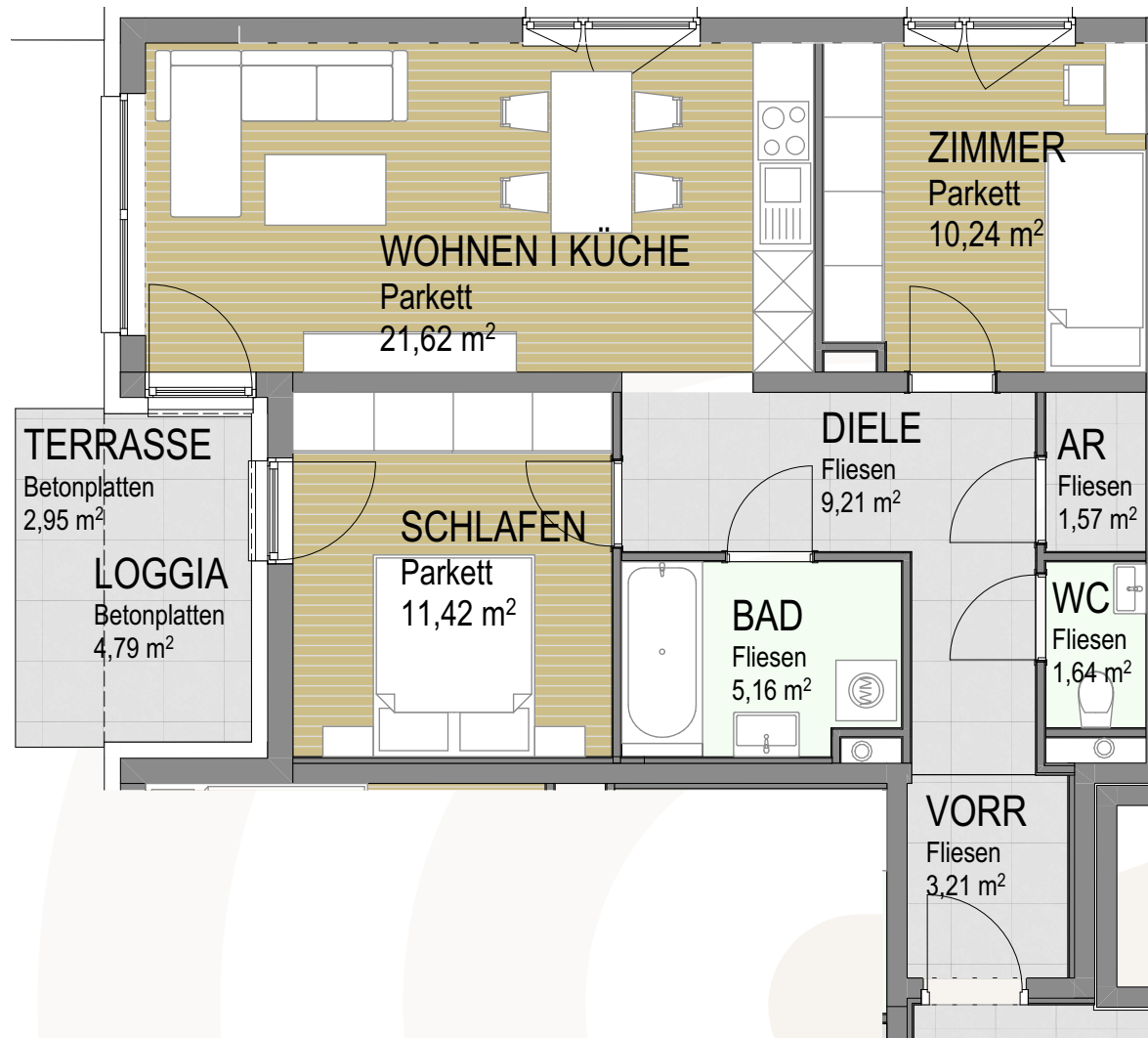
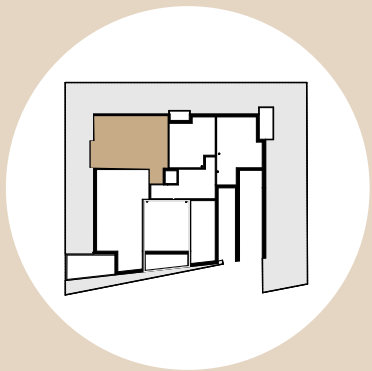
Wohnfläche	81,72 m ²
Loggia	4,08 m ²
Terrasse	7,17 m ²



TOP 3

Erdgeschoss

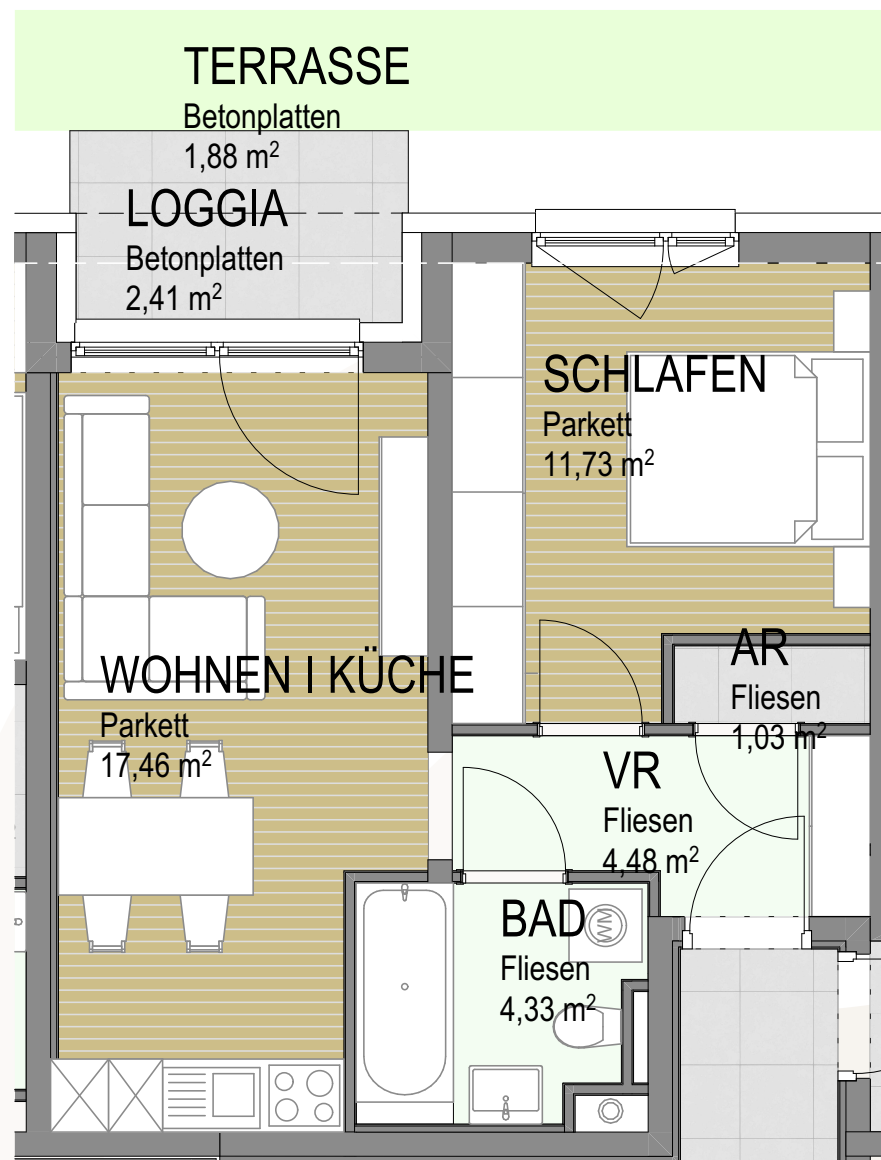
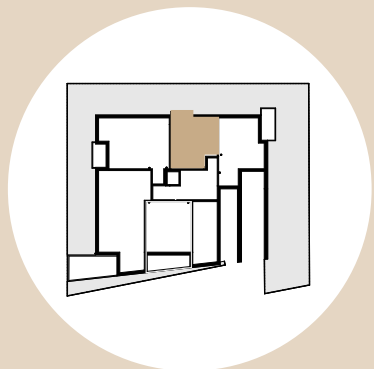
Wohnfläche	64,07 m ²
Loggia	4,79 m ²
Terrasse	2,95 m ²



TOP 4

Erdgeschoss

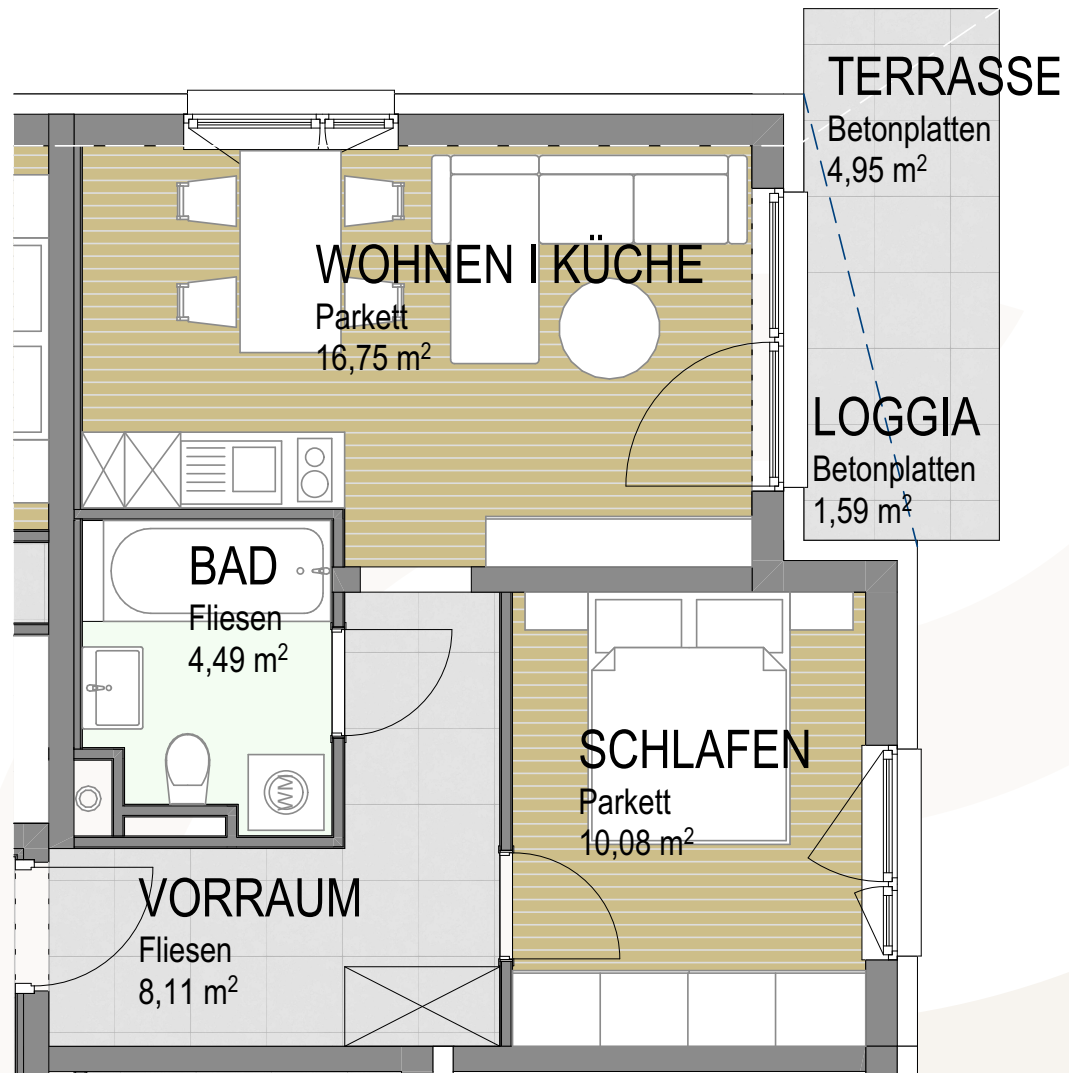
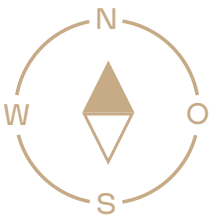
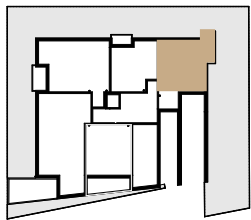
Wohnfläche	39,03 m ²
Loggia	2,41 m ²
Terrasse	1,88 m ²



TOP 5

Erdgeschoss

Wohnfläche	39,43 m ²
Loggia	1,59 m ²
Terrasse	4,95 m ²

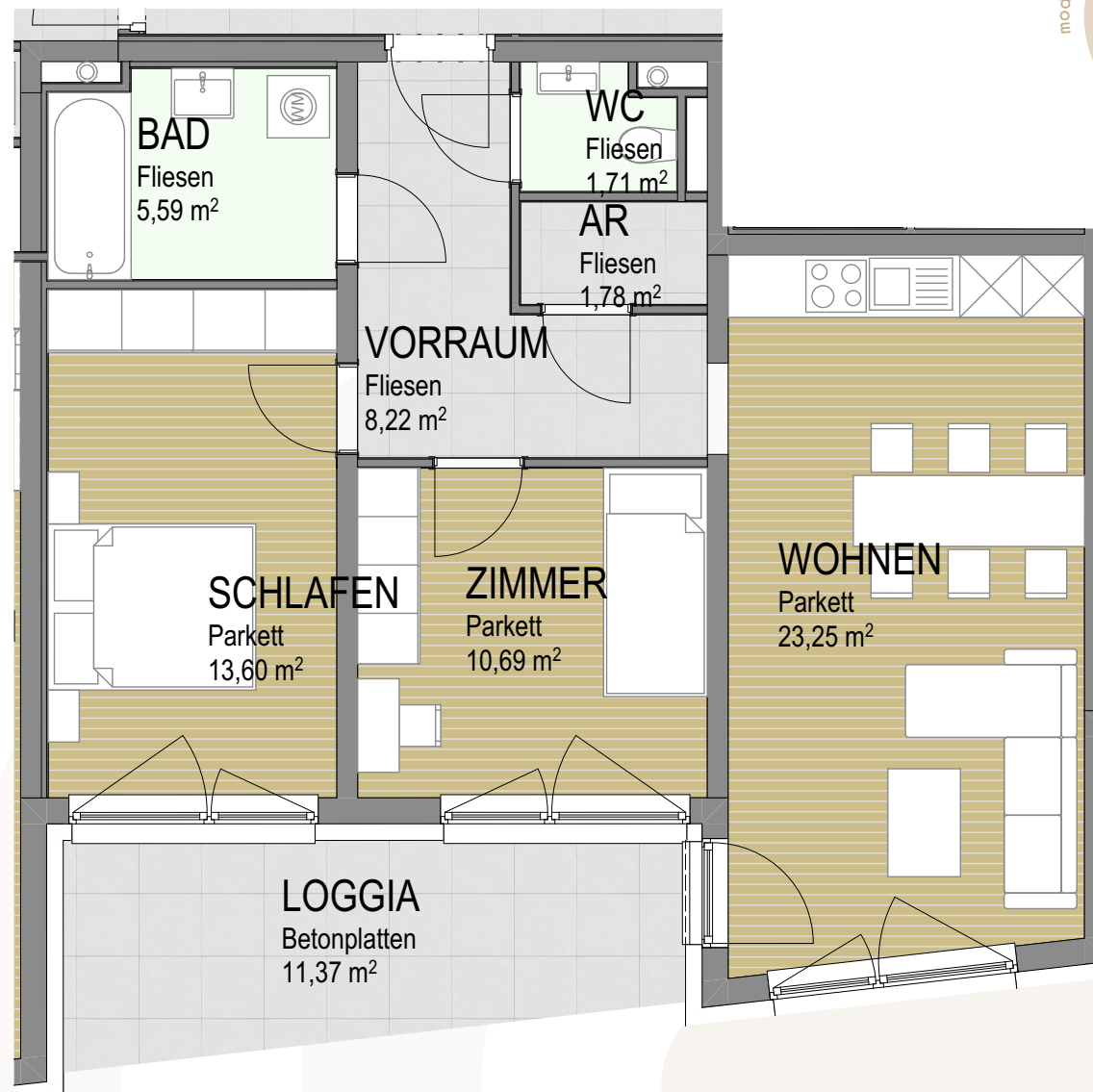
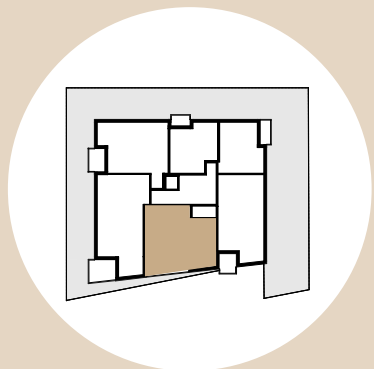


TOP 6

1. Obergeschoss

Wohnfläche 64,84 m²

Loggia 11,37 m²



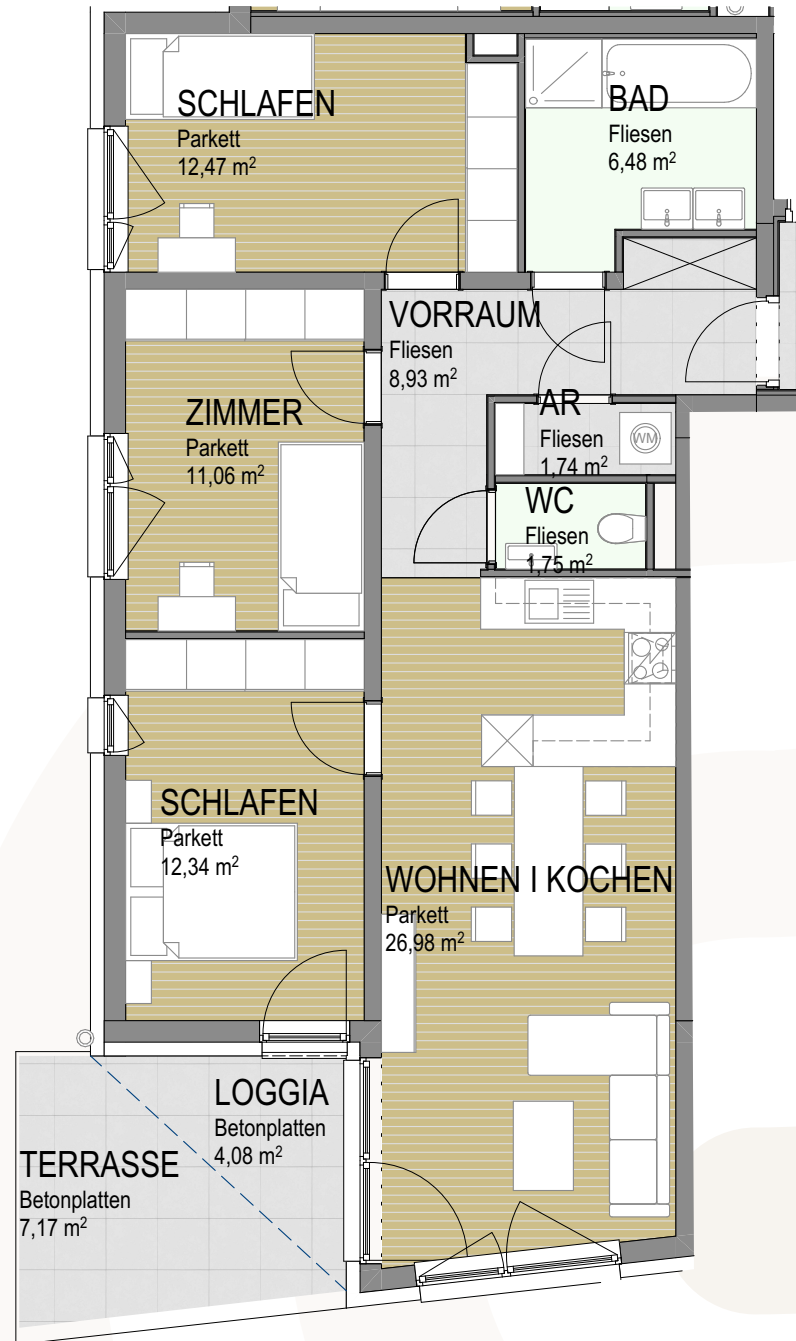
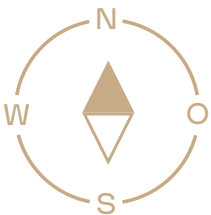
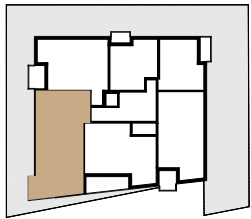
TOP 7

1. Obergeschoss

Wohnfläche 81,75 m²

Loggia 4,08 m²

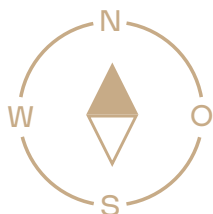
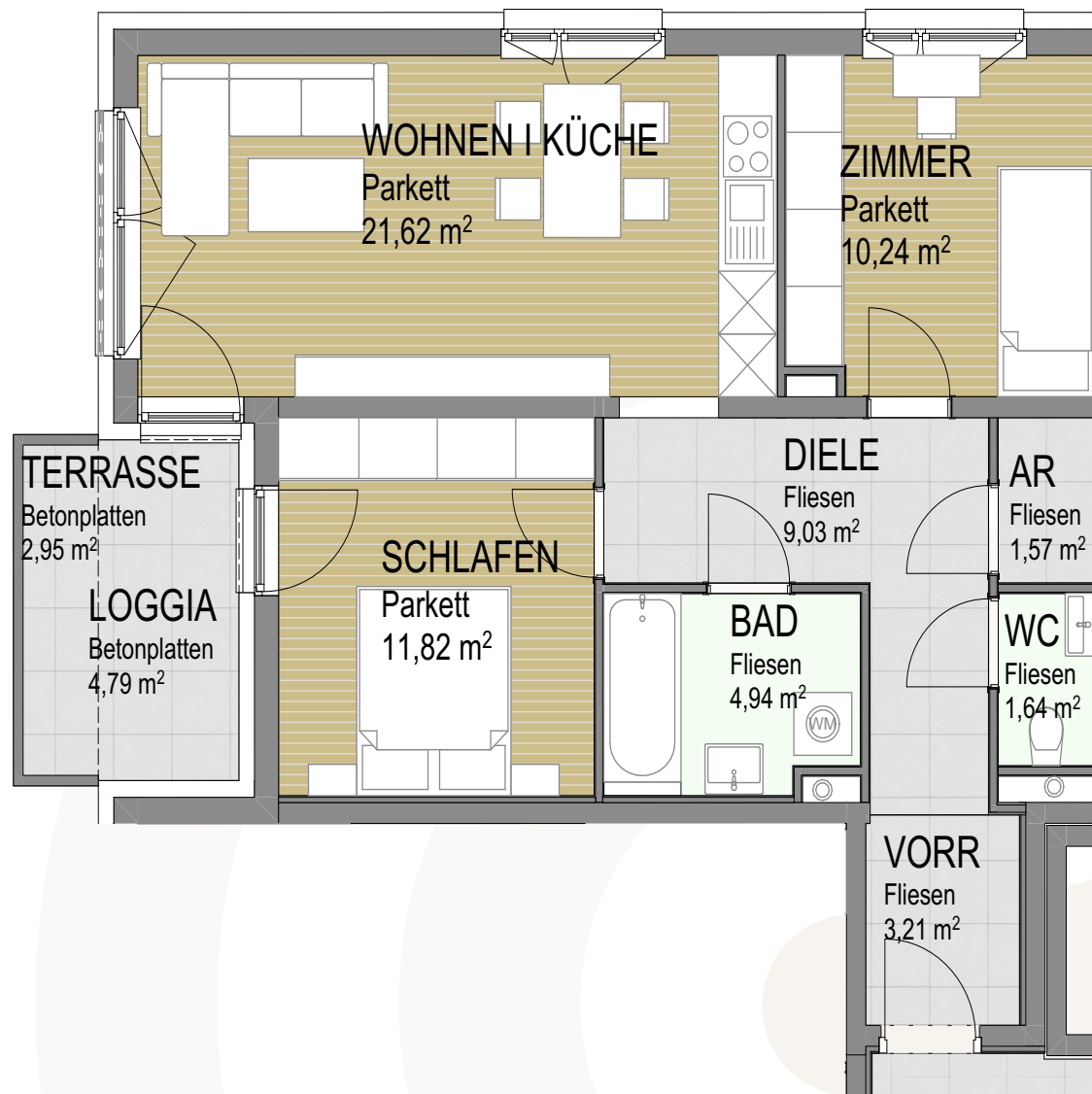
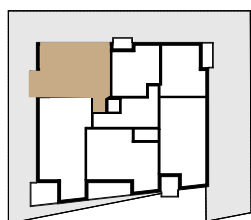
Terrasse 7,17 m²



TOP 8

1. Obergeschoss

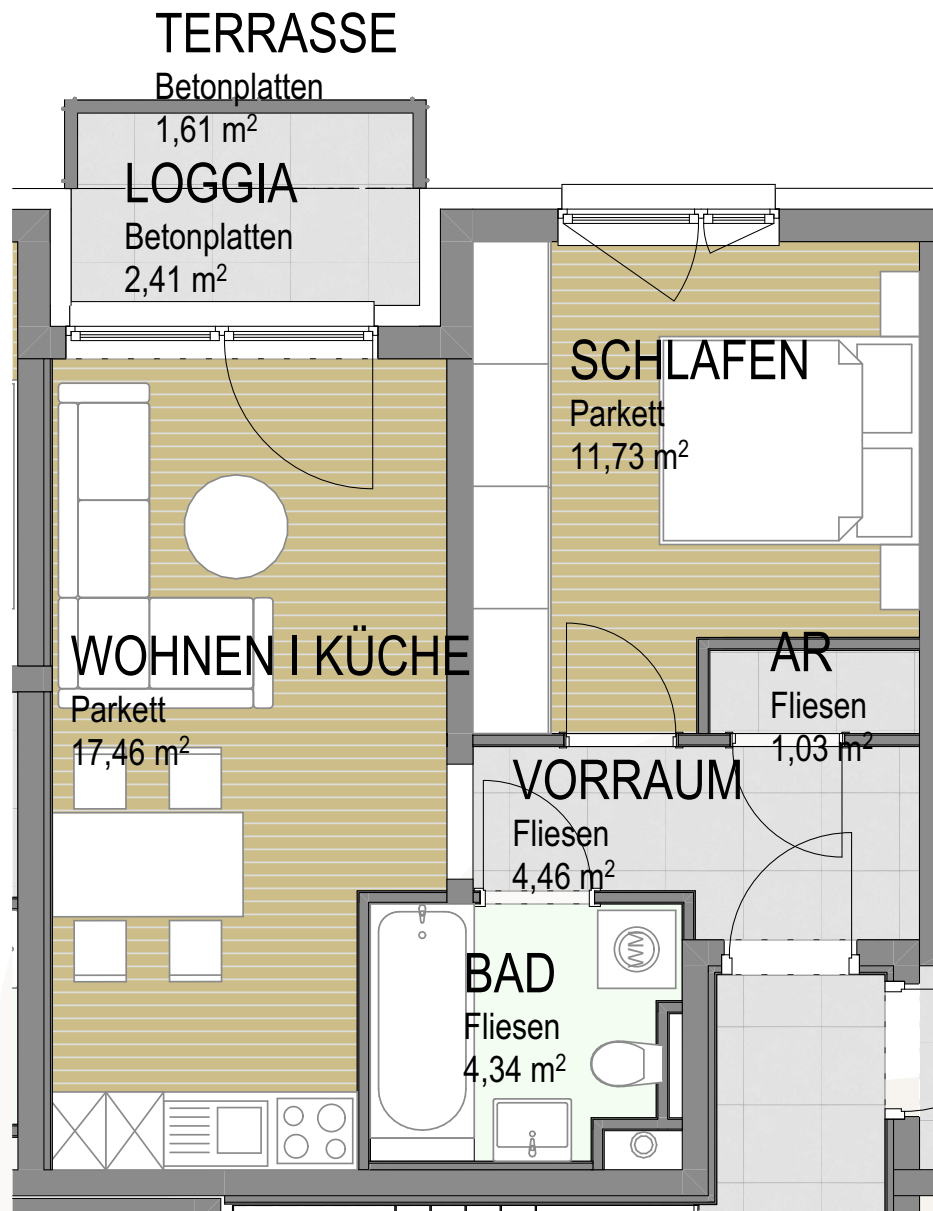
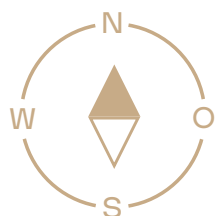
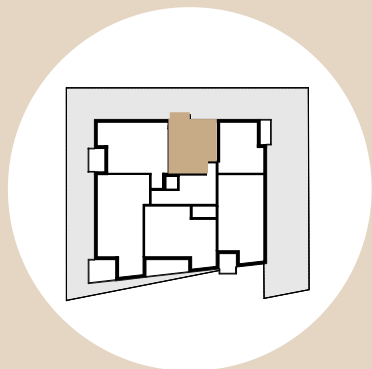
Wohnfläche	64,07 m ²
Loggia	4,79 m ²
Terrasse	2,95 m ²



TOP 9

1. Obergeschoss

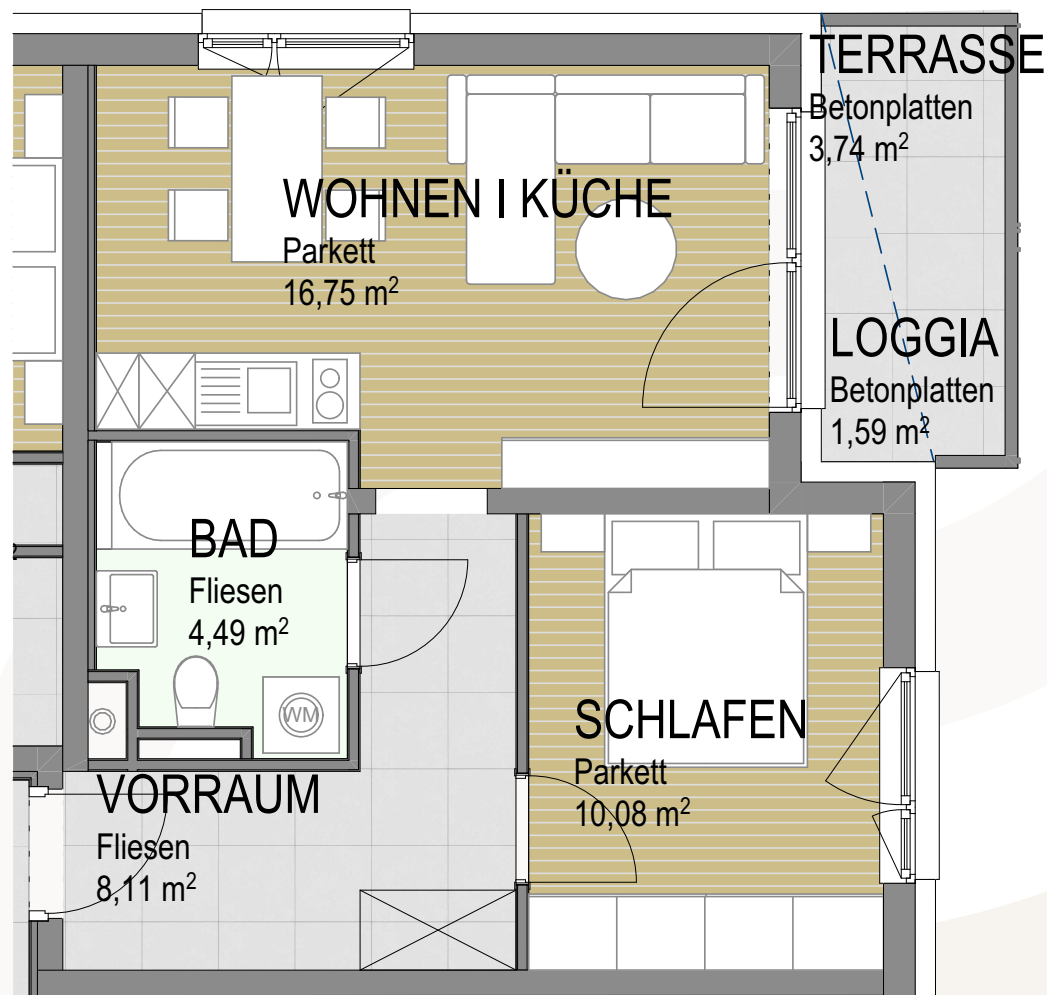
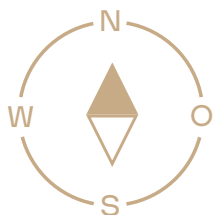
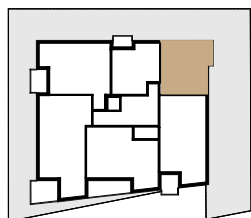
Wohnfläche	39,02 m ²
Loggia	2,41 m ²
Terrasse	1,61 m ²



TOP 10

1. Obergeschoss

Wohnfläche	39,43 m ²
Loggia	1,59 m ²
Terrasse	3,74 m ²



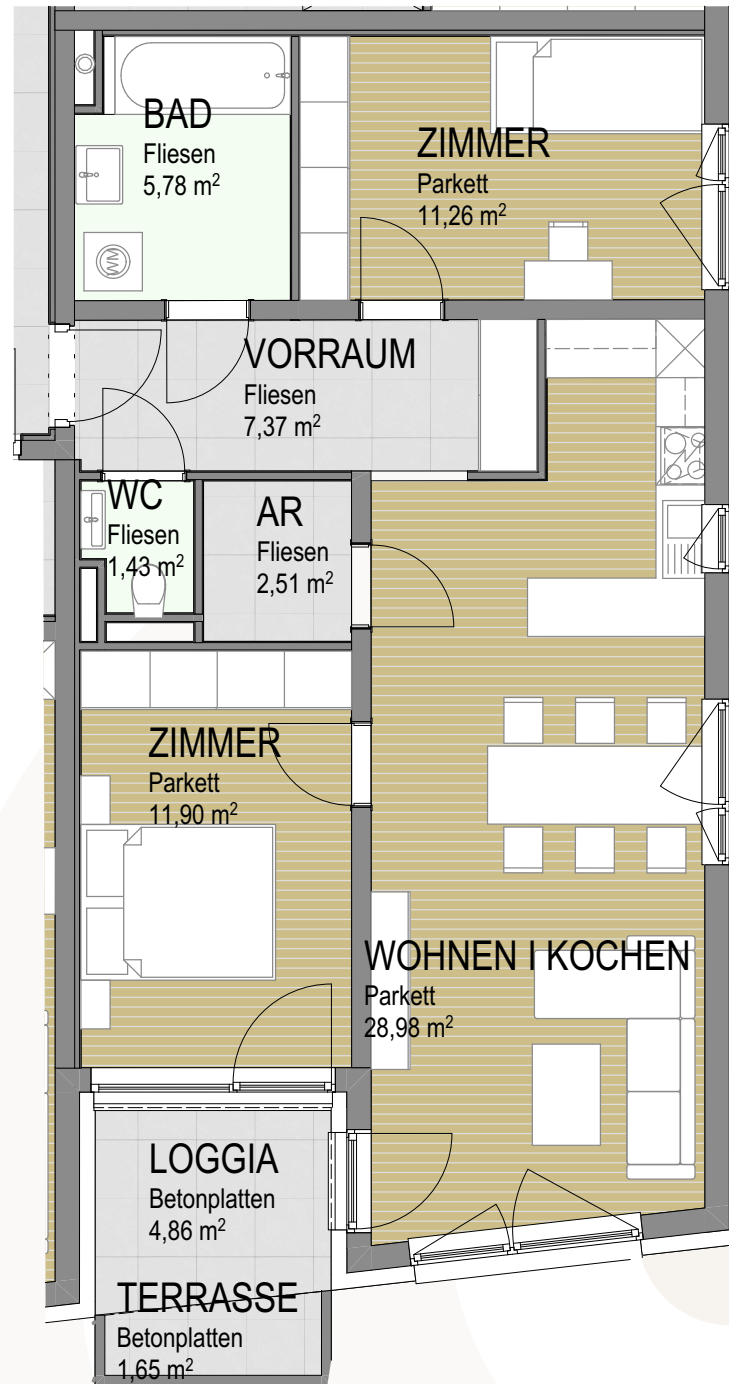
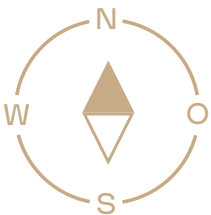
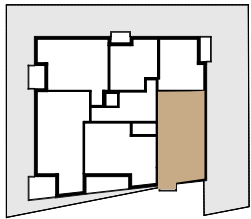
TOP 11

1. Obergeschoss

Wohnfläche 69,23 m²

Loggia 4,86 m²

Terrasse 1,65 m²

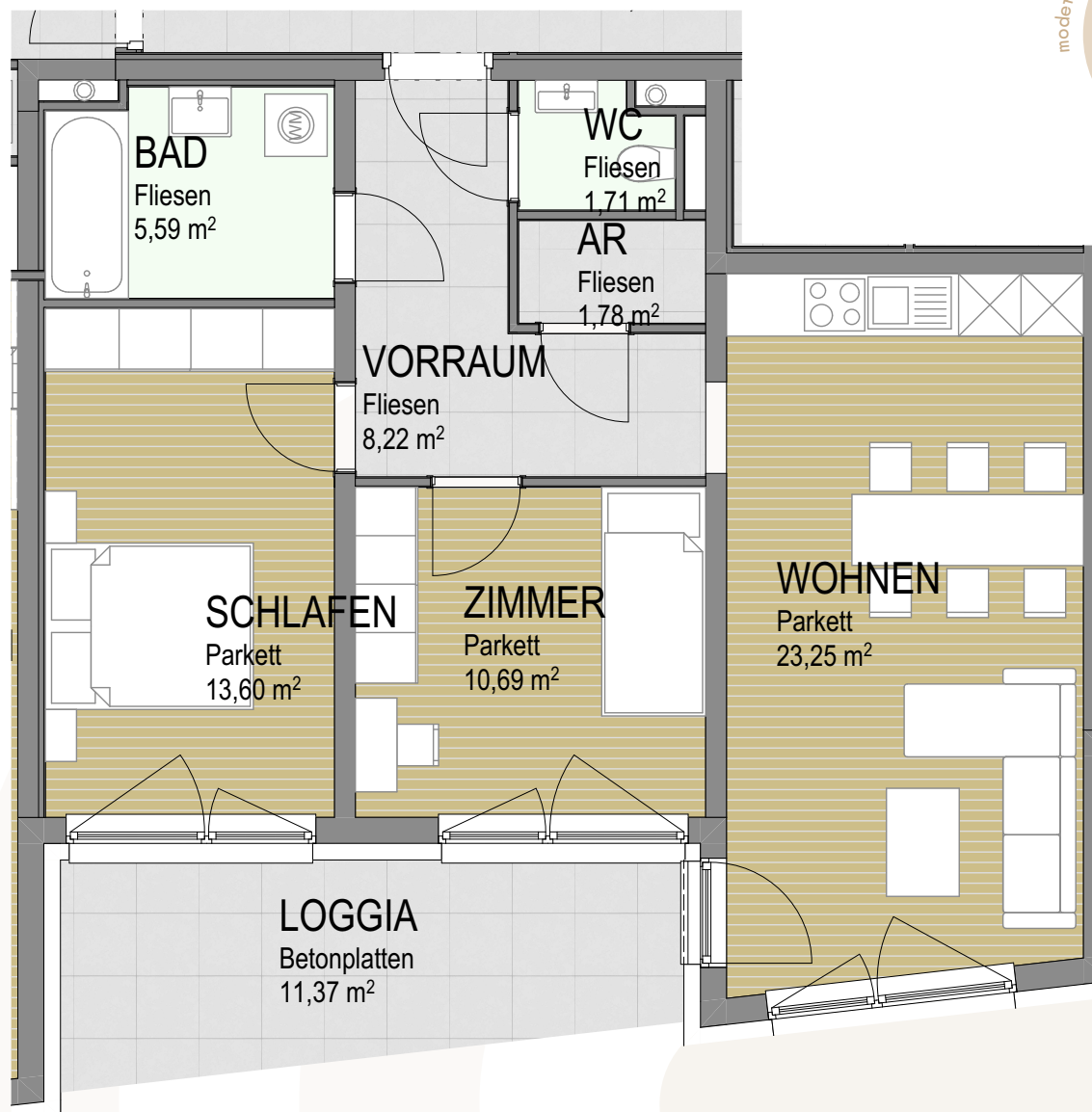
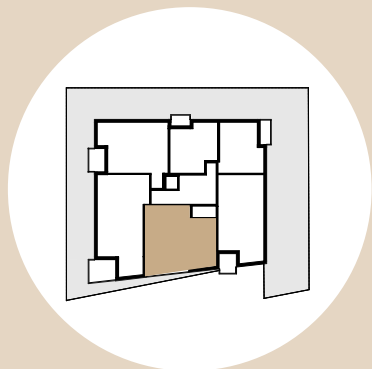


TOP 12

2. Obergeschoss

Wohnfläche 64,84 m²

Loggia 11,37 m²



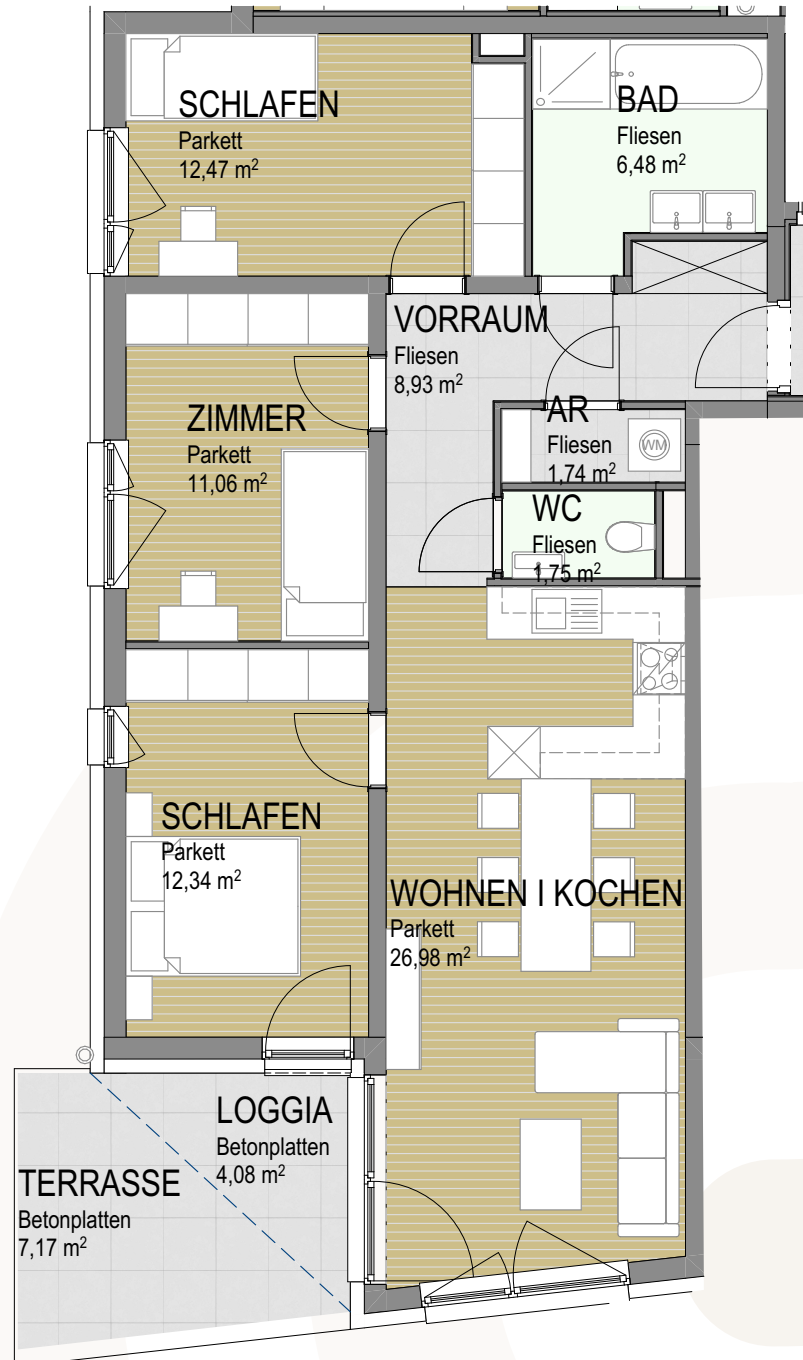
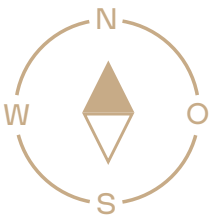
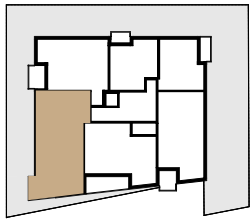
TOP 13

2. Obergeschoss

Wohnfläche 81,75 m²

Loggia 4,08 m²

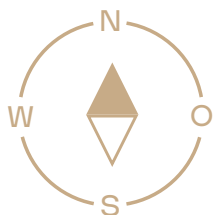
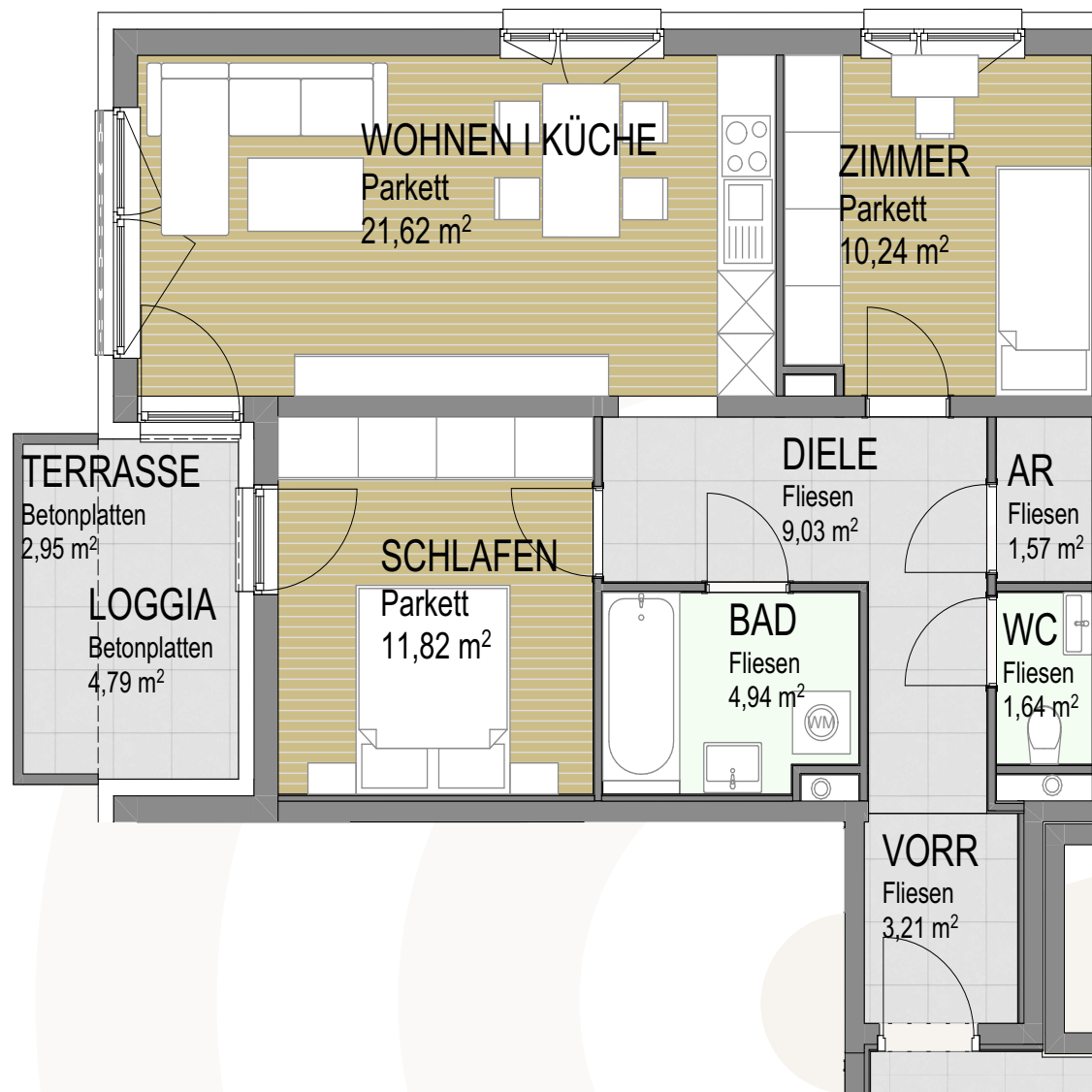
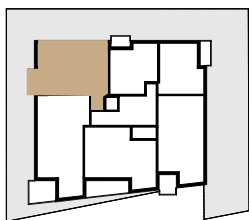
Terrasse 7,17 m²



TOP 14

2. Obergeschoss

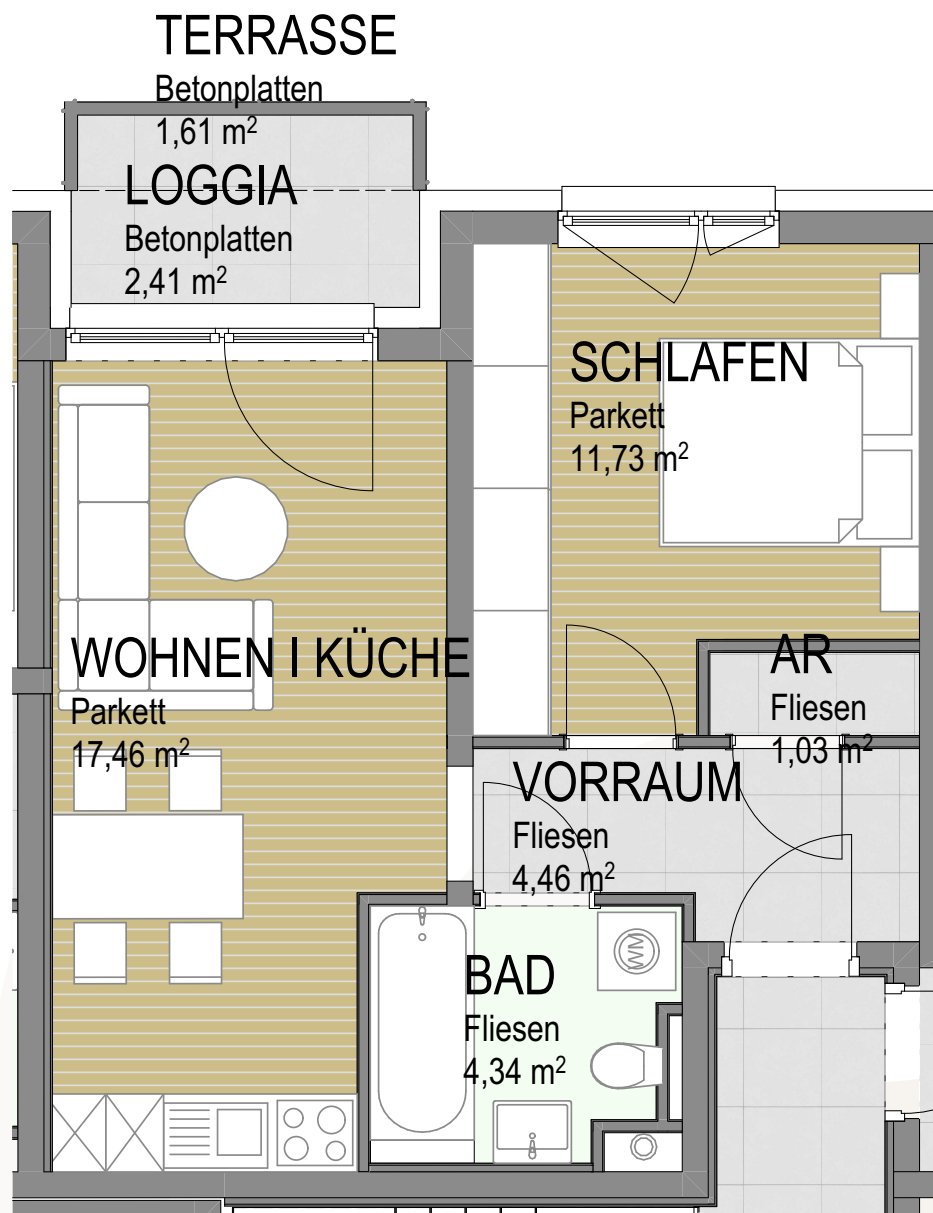
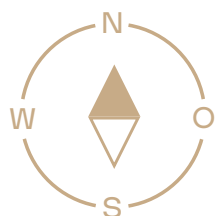
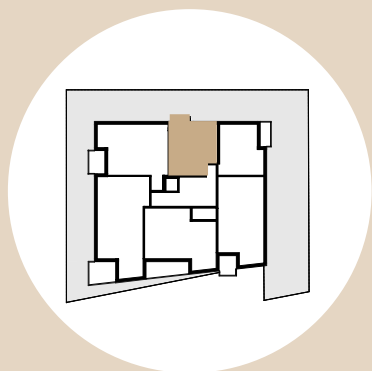
Wohnfläche	64,07 m ²
Loggia	4,79 m ²
Terrasse	2,95 m ²



TOP 15

2. Obergeschoss

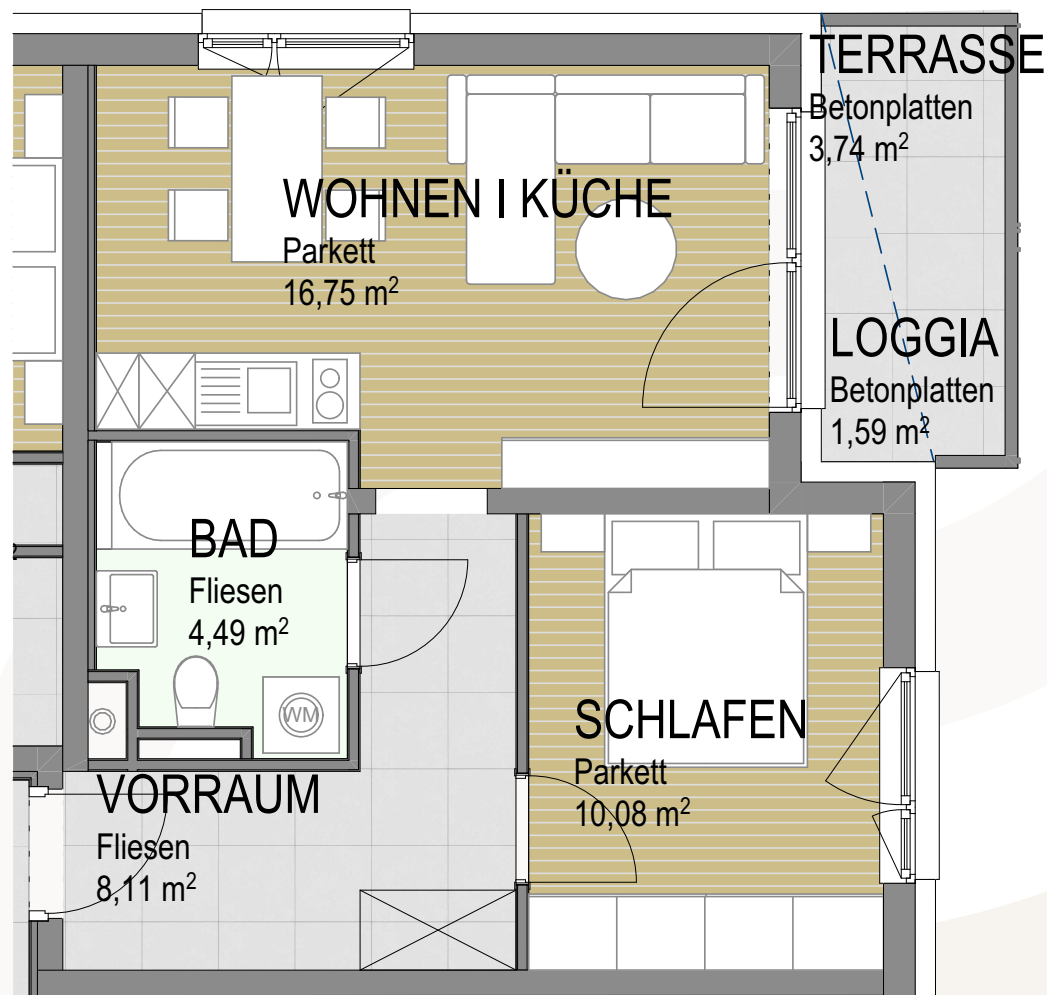
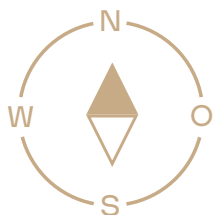
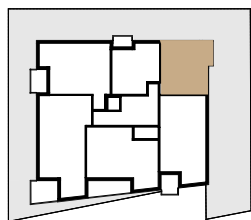
Wohnfläche	39,02 m ²
Loggia	2,41 m ²
Terrasse	1,61 m ²



TOP 16

2. Obergeschoss

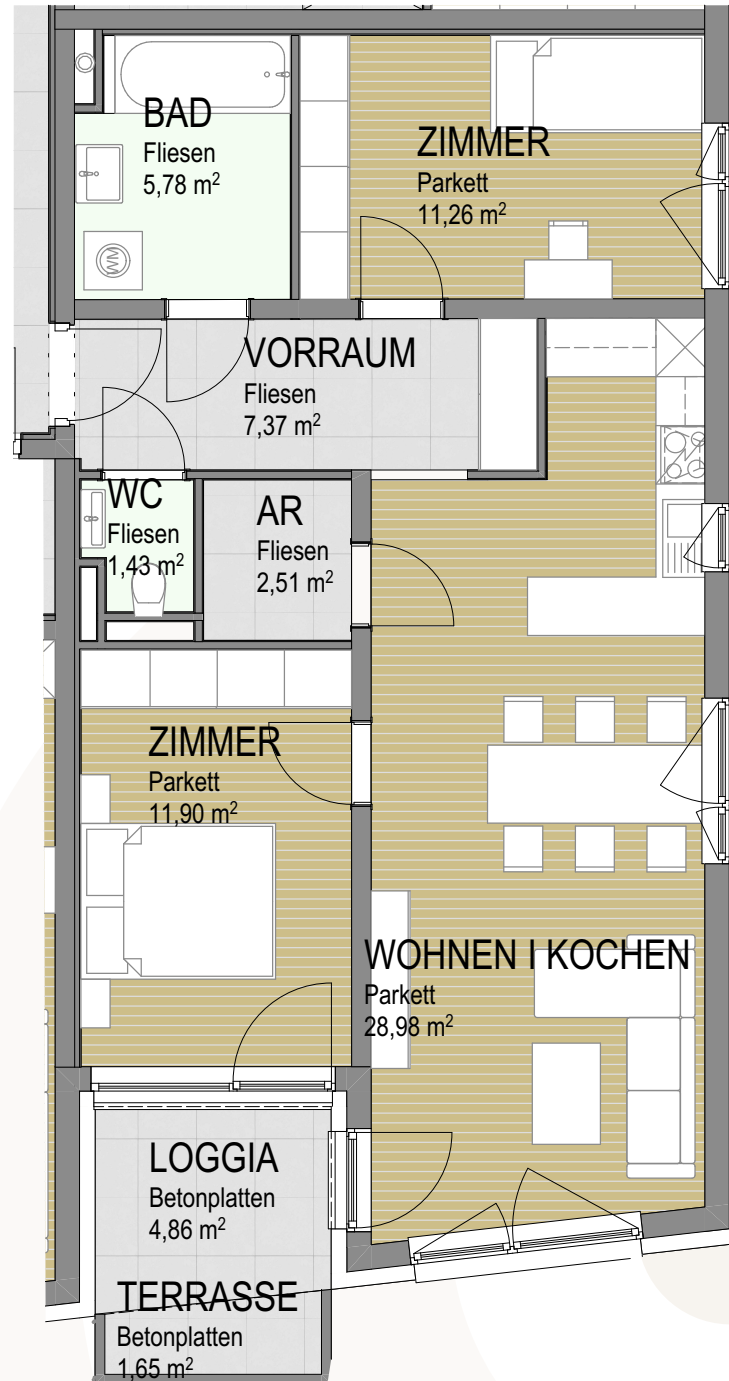
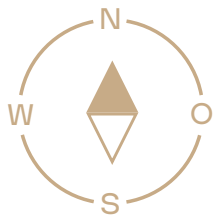
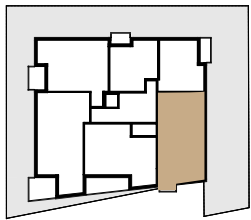
Wohnfläche	39,43 m ²
Loggia	1,59 m ²
Terrasse	3,74 m ²



TOP 17

2. Obergeschoss

Wohnfläche	69,23 m ²
Loggia	4,86 m ²
Terrasse	1,65 m ²



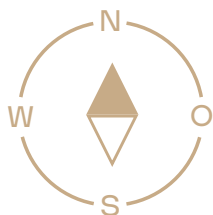
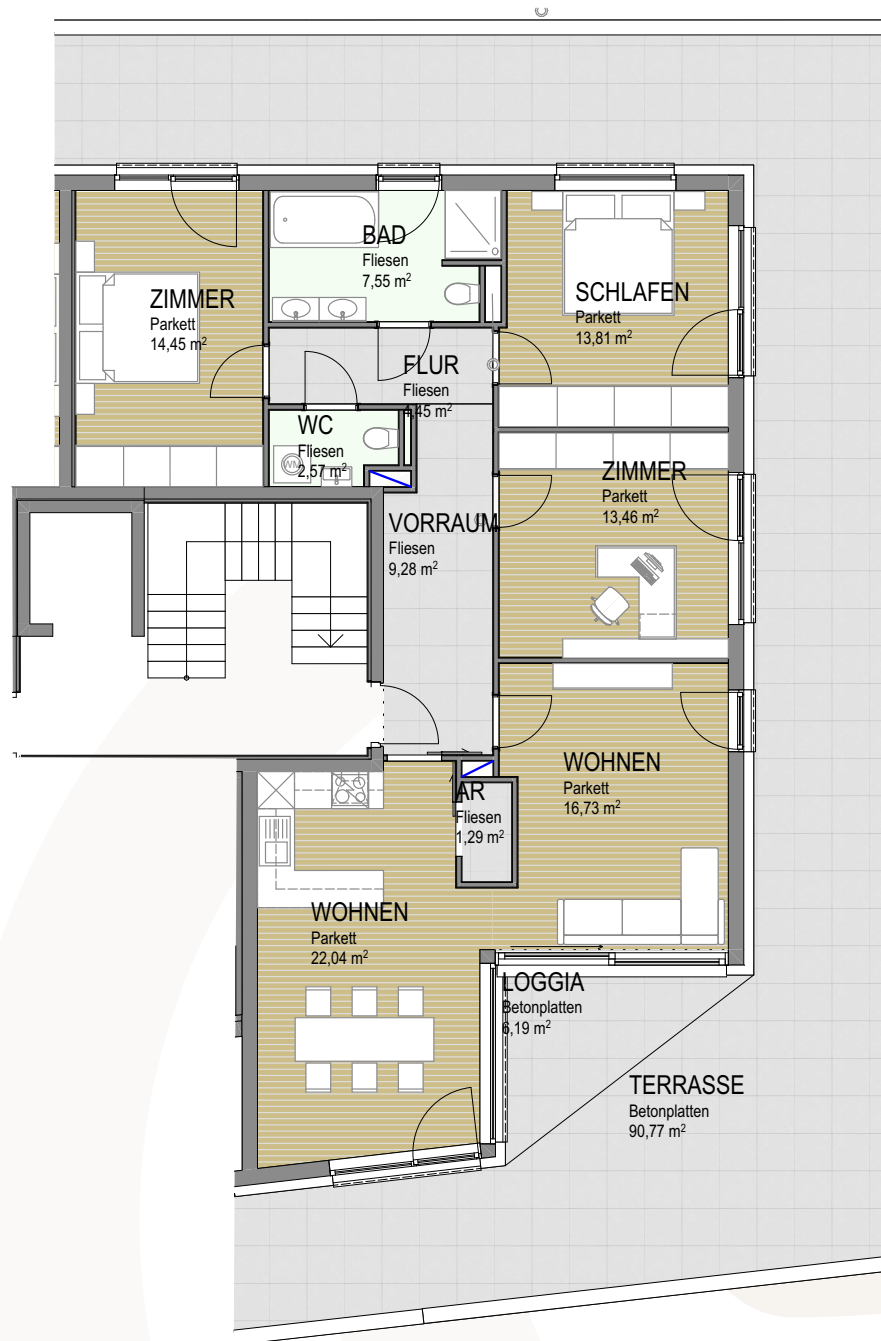
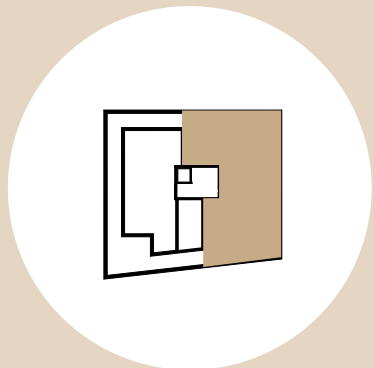
TOP 18

Penthouse, DG

Wohnfläche 105,61 m²

Loggia 6,19 m²

Terrasse 90,77 m²



TOP 19

Penthouse, DG

Wohnfläche 103,08 m²

Loggia 5,18 m²

Terrasse 89,96 m²

