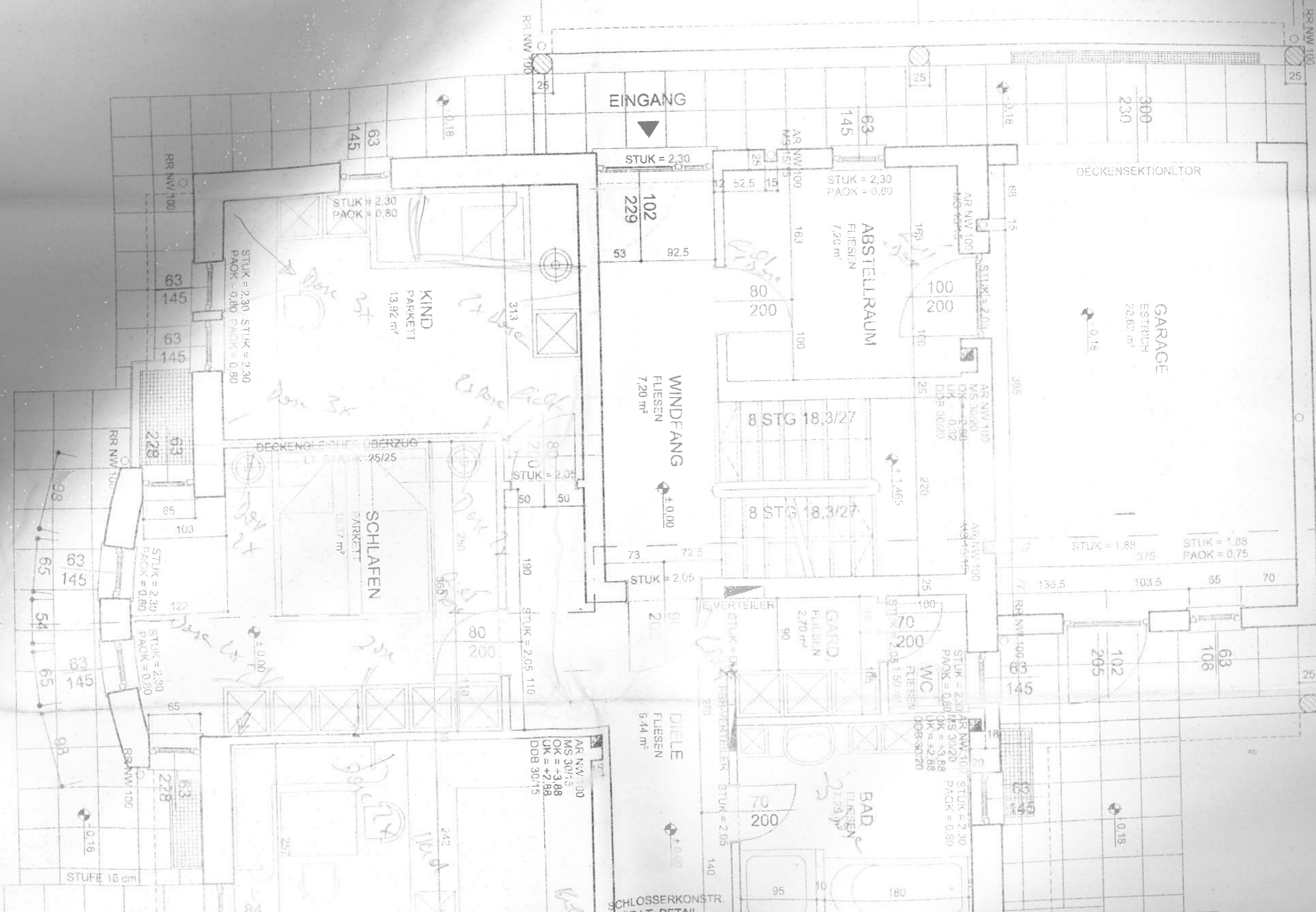
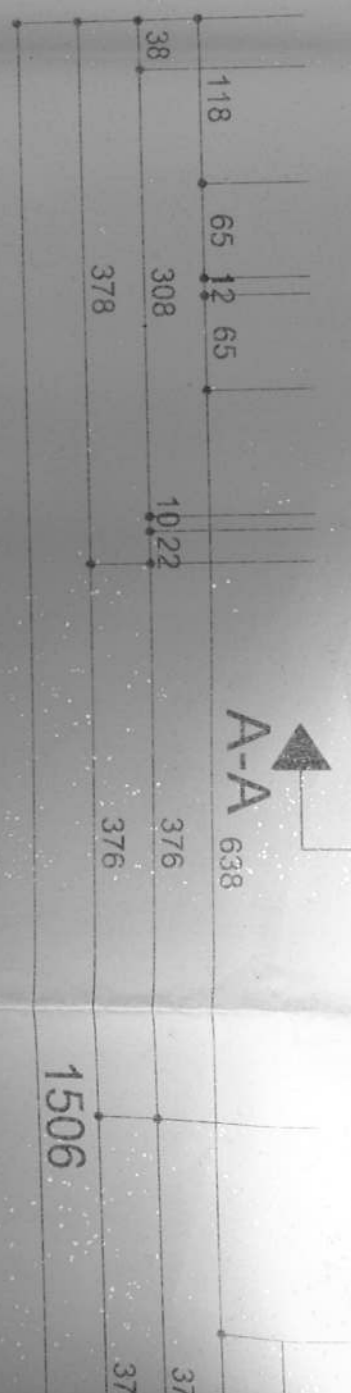
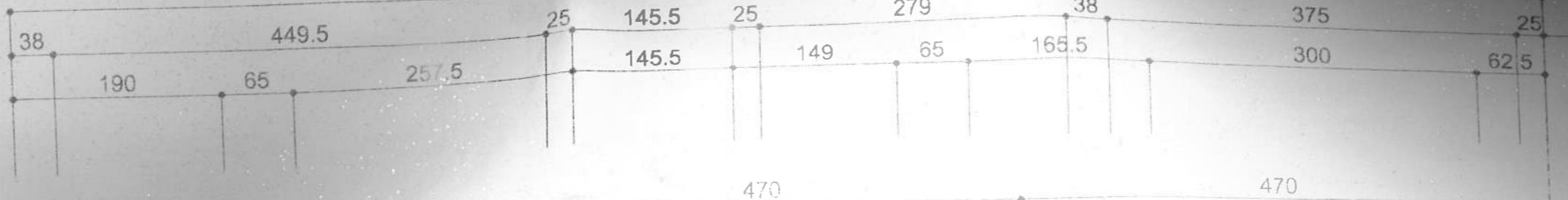






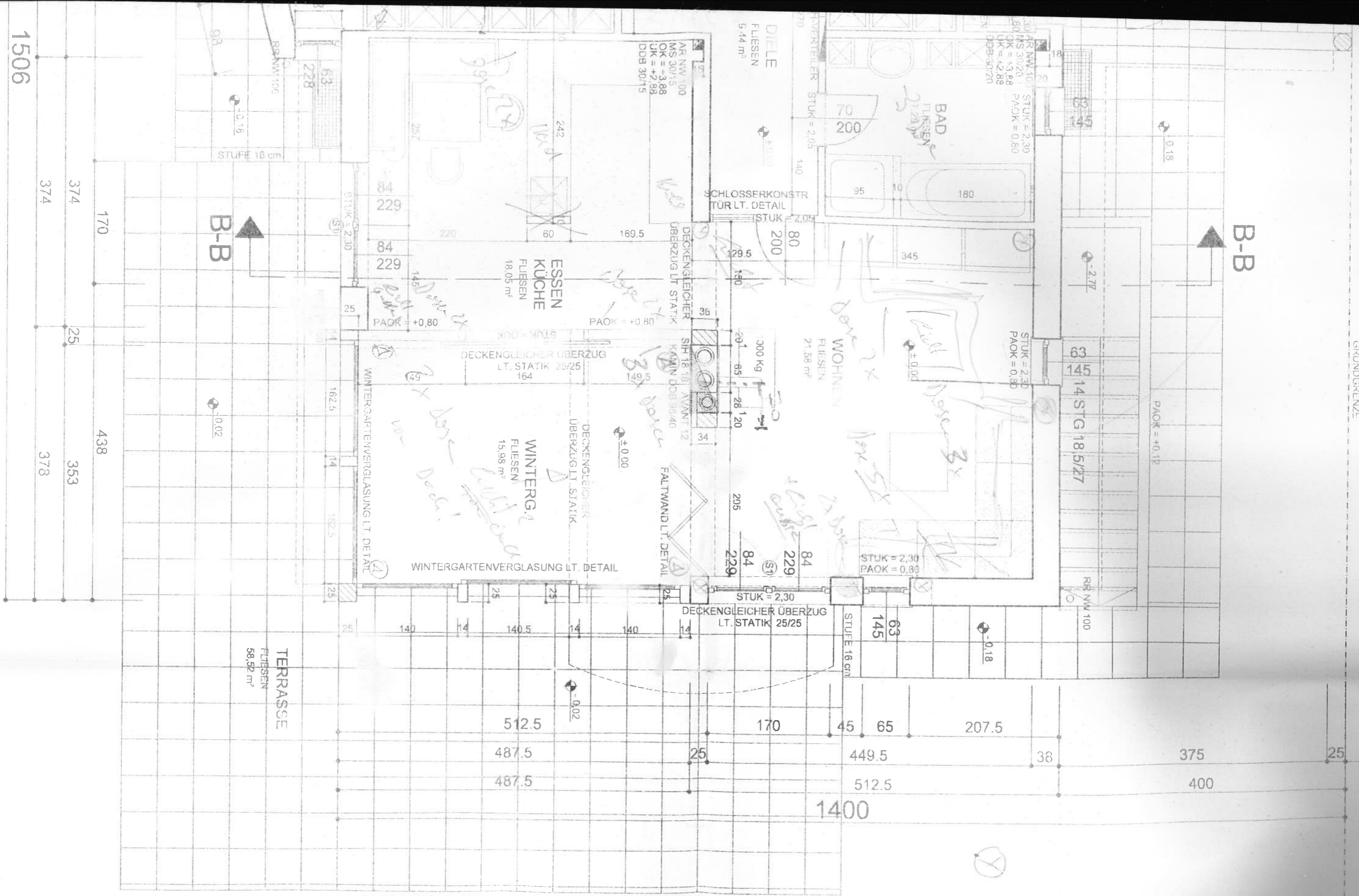
1400



A-A

A-A

SCHLOSSERKONSTR. FÜR LT. DETAIL



B-B

B-B

1506

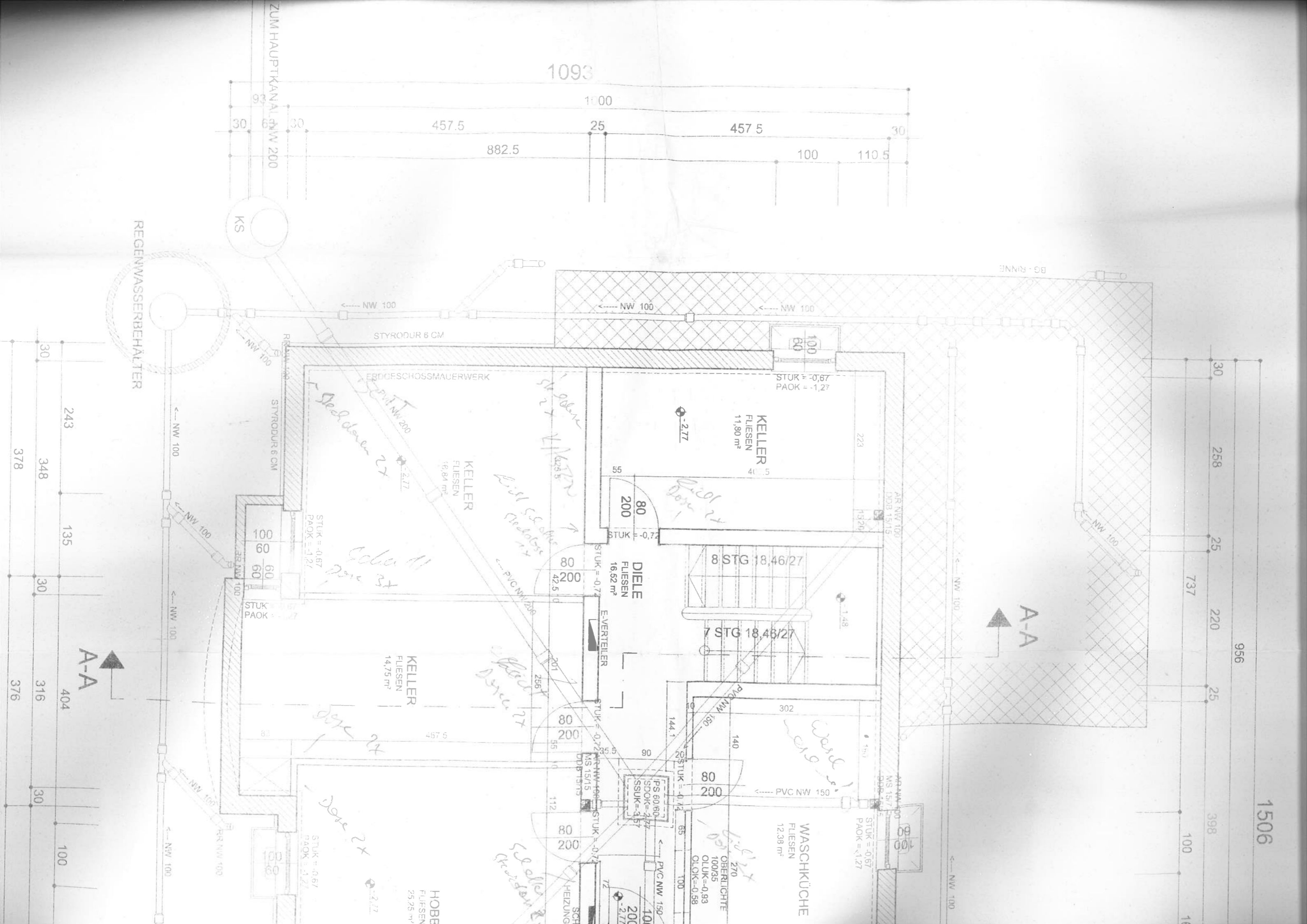
1400

*Handwritten notes:*  
 ca. 11-12  
 ca. 10-11  
 ca. 11-12  
 ca. 11-12

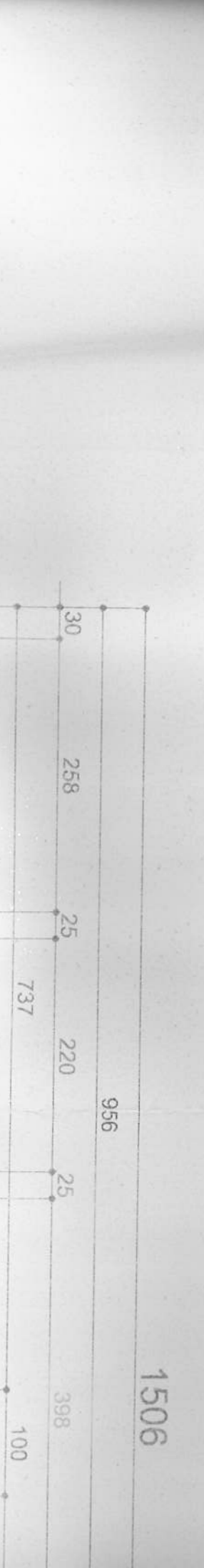
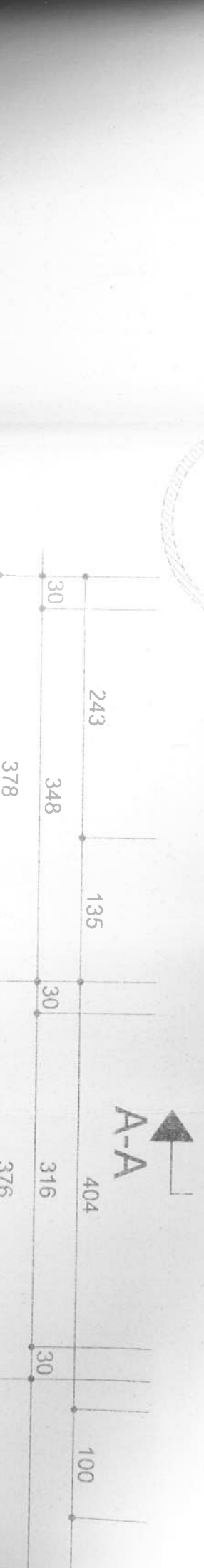
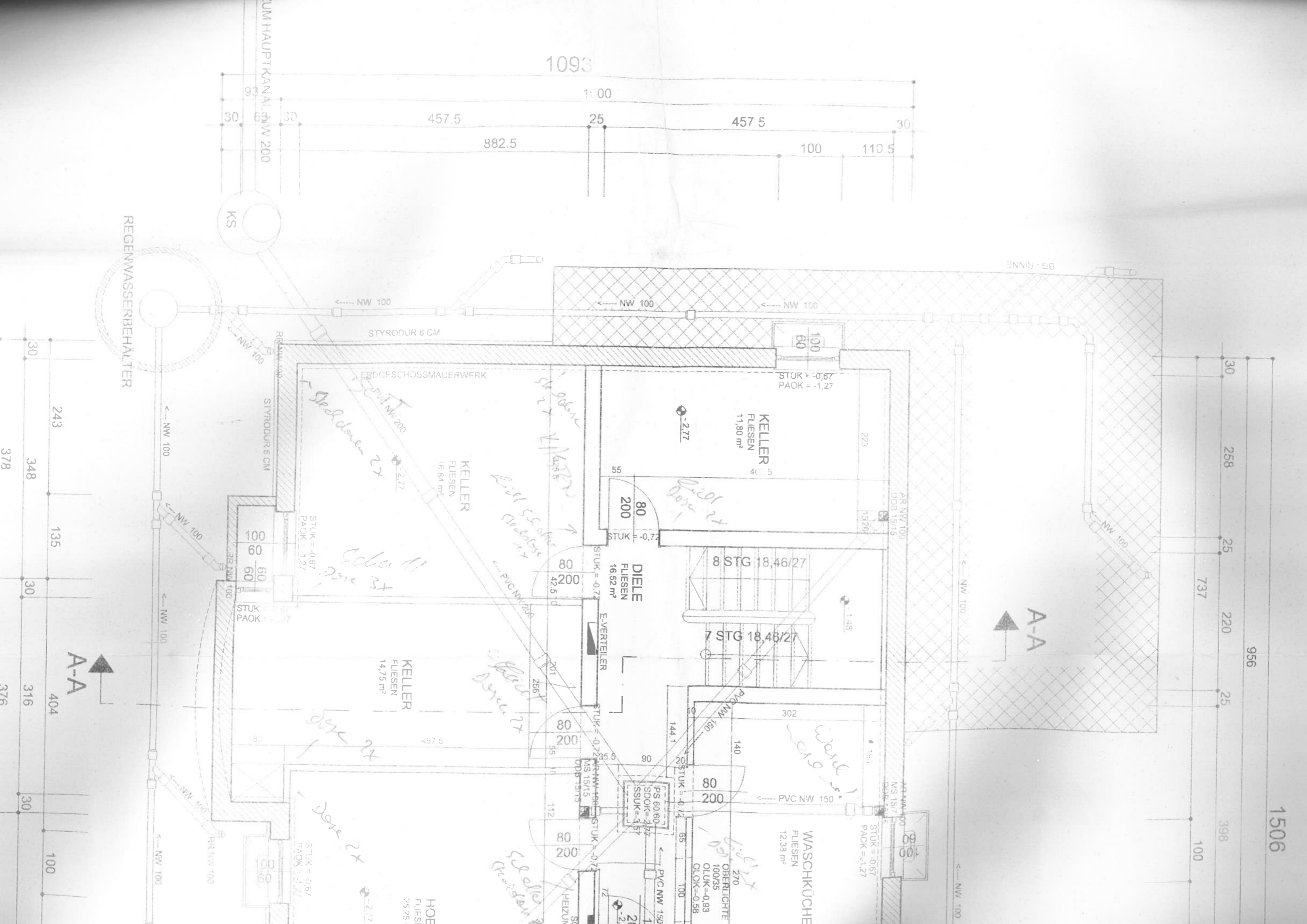
*Handwritten notes:*  
 ca. 11-12  
 ca. 10-11  
 ca. 11-12

GRUNDGRENZE

GRUNDG



1093



1506

REGENWASSERBEHÄLTER

KS

ZUM HAUPTKANAL NW 200

STYRODUR 6 CM

ERDGESCHOSSMAUERWERK

*Handwritten:* Keller 27  
Gehobener 27

KELLER  
FLIESEN  
16,84 m<sup>2</sup>

KELLER  
FLIESEN  
11,80 m<sup>2</sup>

DIELE  
FLIESEN  
16,52 m<sup>2</sup>

8 STG 18,46/27

7 STG 18,46/27

KELLER  
FLIESEN  
14,75 m<sup>2</sup>

WASCHKÜCHE  
FLIESEN  
12,38 m<sup>2</sup>

HOBBE  
FLIESEN  
25,25 m<sup>2</sup>

A-A

A-A

*Handwritten:* Keller 27  
Dose 27

*Handwritten:* Keller 27  
Dose 27

*Handwritten:* Keller 27  
Dose 27

*Handwritten:* Keller 27  
Dose 27

*Handwritten:* Keller 27  
Dose 27

*Handwritten:* Keller 27  
Dose 27

378

348

135

30

376

316

404

30

100

30

30

30

30

258

25

737

220

956

25

398

100

18

30

60

30

457,5

1000

25

882,5

457,5

100

110,5

30

NW 100

NW 100

NW 100

NW 100

NW 100

NW 100

NW 100

NW 100

NW 100

NW 100

NW 100

NW 100

NW 100

NW 100

NW 100

NW 100

NW 100

NW 100

NW 100

NW 100

NW 100

NW 100

NW 100

NW 100

NW 100

NW 100

NW 100

NW 100

NW 100

NW 100

NW 100

NW 100

NW 100

NW 100

NW 100

NW 100

NW 100

NW 100

NW 100

NW 100

NW 100

NW 100

NW 100

NW 100

NW 100

NW 100

NW 100

NW 100

NW 100

NW 100

NW 100

NW 100

NW 100

NW 100

NW 100

NW 100

NW 100

NW 100

NW 100

NW 100

NW 100

NW 100

NW 100

NW 100

NW 100

NW 100

NW 100

NW 100

NW 100

NW 100

NW 100

NW 100

NW 100

NW 100

NW 100

NW 100

NW 100

NW 100

NW 100

NW 100

NW 100

NW 100

NW 100

NW 100

NW 100

NW 100

NW 100

NW 100

NW 100

NW 100

NW 100

NW 100

NW 100

NW 100

NW 100

NW 100

NW 100

NW 100

NW 100

NW 100

NW 100

NW 100

NW 100

NW 100

NW 100

NW 100

NW 100

NW 100

NW 100

NW 100

NW 100

NW 100

NW 100

NW 100

NW 100

NW 100

NW 100

NW 100

NW 100

NW 100

NW 100

NW 100

NW 100

NW 100

NW 100

NW 100

NW 100

NW 100

NW 100

NW 100

NW 100

NW 100

NW 100

NW 100

NW 100

NW 100

NW 100

NW 100

NW 100

NW 100

NW 100

NW 100

NW 100

NW 100

NW 100

NW 100

NW 100

NW 100

NW 100

NW 100

NW 100

NW 100

NW 100

NW 100

NW 100

NW 100

NW 100

NW 100

NW 100

NW 100

NW 100

NW 100

NW 100

NW 100

NW 100

NW 100

NW 100

NW 100

NW 100

NW 100

NW 100

NW 100

NW 100

NW 100

NW 100

NW 100

NW 100

NW 100

NW 100

NW 100

NW 100

NW 100

NW 100

NW 100

NW 100

NW 100

NW 100

NW 100

NW 100

NW 100

NW 100

NW 100

NW 100

NW 100

NW 100

NW 100

NW 100

NW 100

NW 100

NW 100

NW 100

NW 100

NW 100

NW 100

NW 100

NW 100

NW 100

NW 100

NW 100

NW 100

NW 100

NW 100

NW 100

NW 100

NW 100

NW 100

NW 100

NW 100

NW 100

NW 100

NW 100

