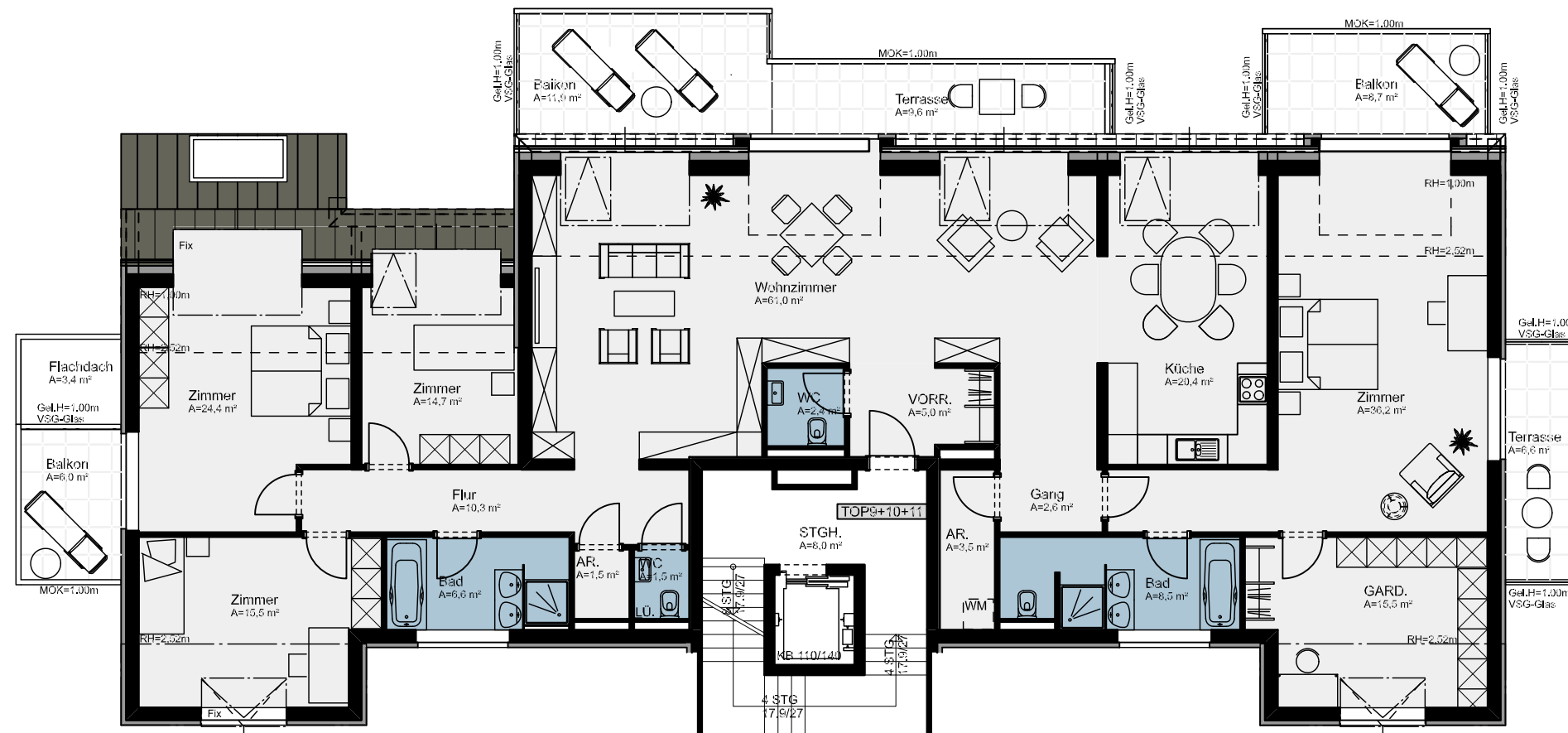




Donauwartesteig 14, 1190 Wien



TOP 9 +10 + 11: 229,6m²

Wohnzimmer	61,00m ²
Küche	20,40m ²
Vorräum	2,60m ²
Zimmer	36,20m ²
Gardrobe	15,50m ²
BAD/WC	8,50m ²
WC	1,80m ²
AR	3,50m ²
Flur	10,30m ²
WC	1,50m ²
AR	1,50m ²
BAD	6,60m ²
Zimmer	14,70m ²
Zimmer	24,40m ²
Zimmer	15,50m ²
Balkon	6,00m ²
Balkon	11,90m ²
Balkon	8,70m ²
Terrasse	9,60m ²

