



TREND

IMMOTREUHAND GMBH
Immobilien, Bauträger u. Bausysteme

Kaarstrasse 2
A-4040 Linz

PLANQUADRAT
BAUWERKE GmbH

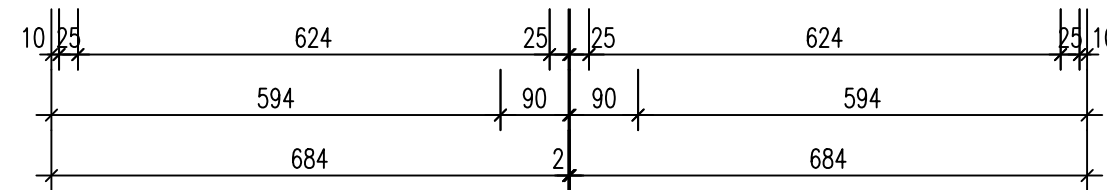
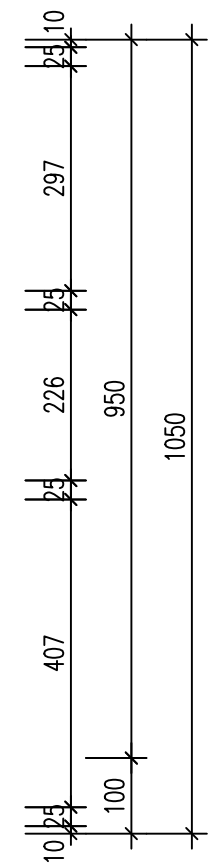
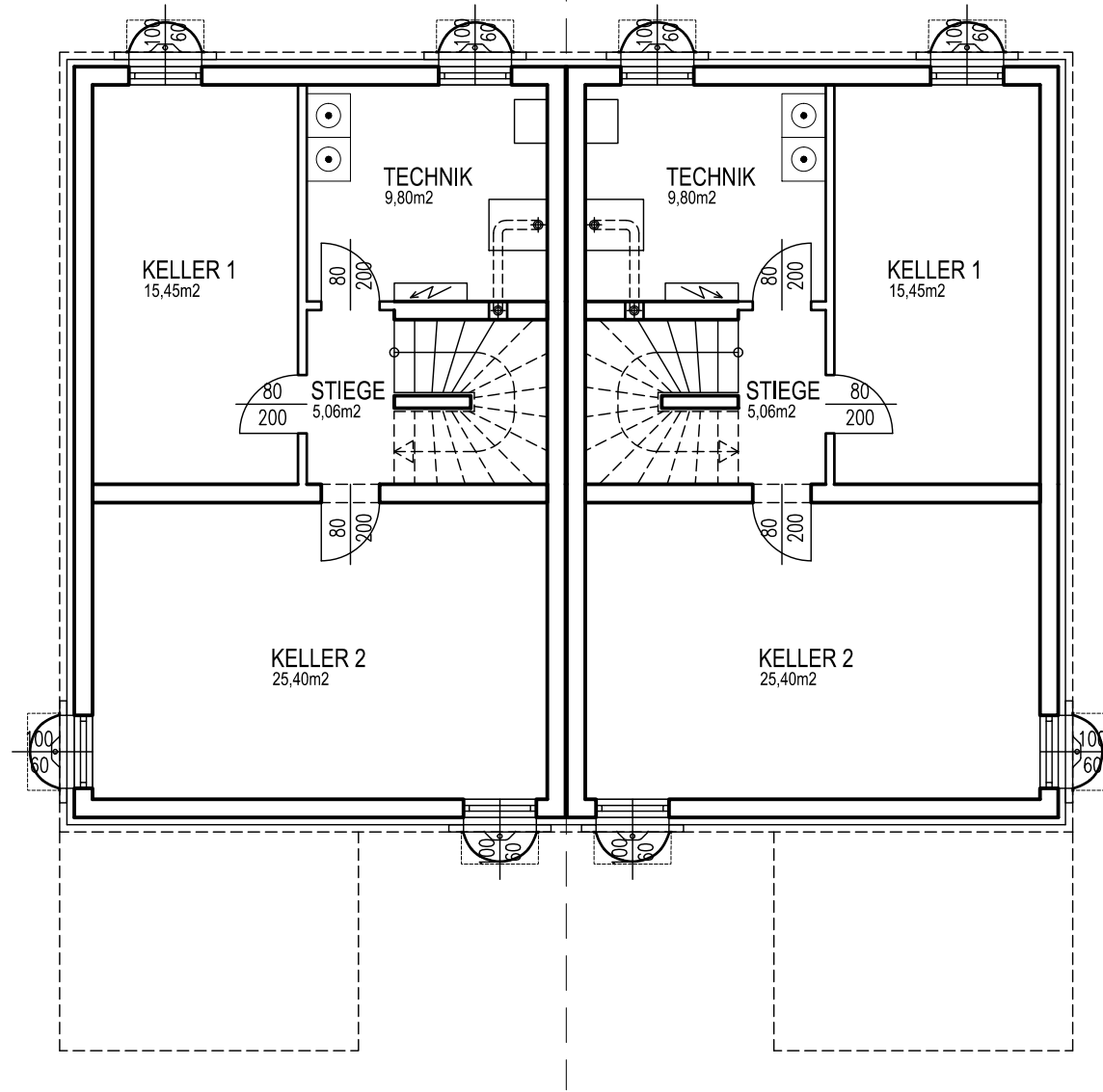
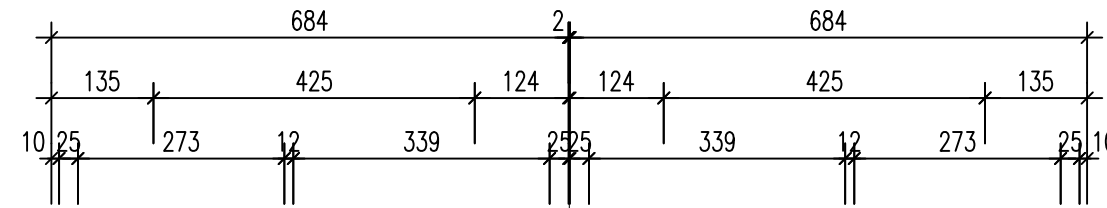
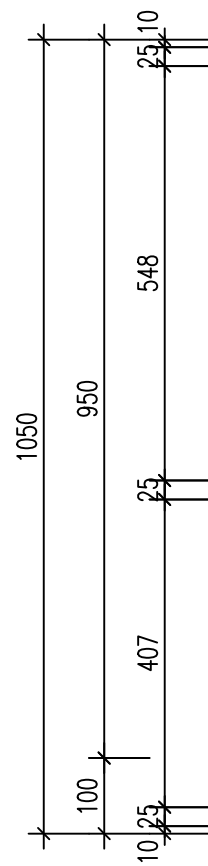
Tel.: 0732 / 94 70 34
Fax.: 0732 / 94 70 35
Mail: office@pqb.at

DOPPELHAUS STANDARD

TYP 2A (2)

GRUNDRISS KELLERGESCHOSS

| | | | |
|----------|------------|-------|-------------|
| Maßstab: | Datum: | Gez.: | Plannr.: |
| 1:100 | 14.10.2021 | Weber | TI_2A (2)_a |





TREND

IMMOTREUHAND GMBH
Immobilien, Bauträger u. Bausysteme

Kaarstrasse 2
A-4040 Linz



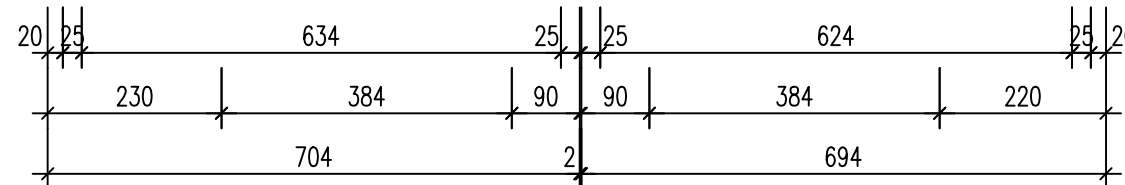
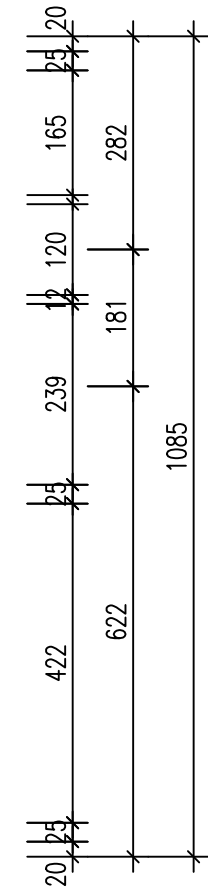
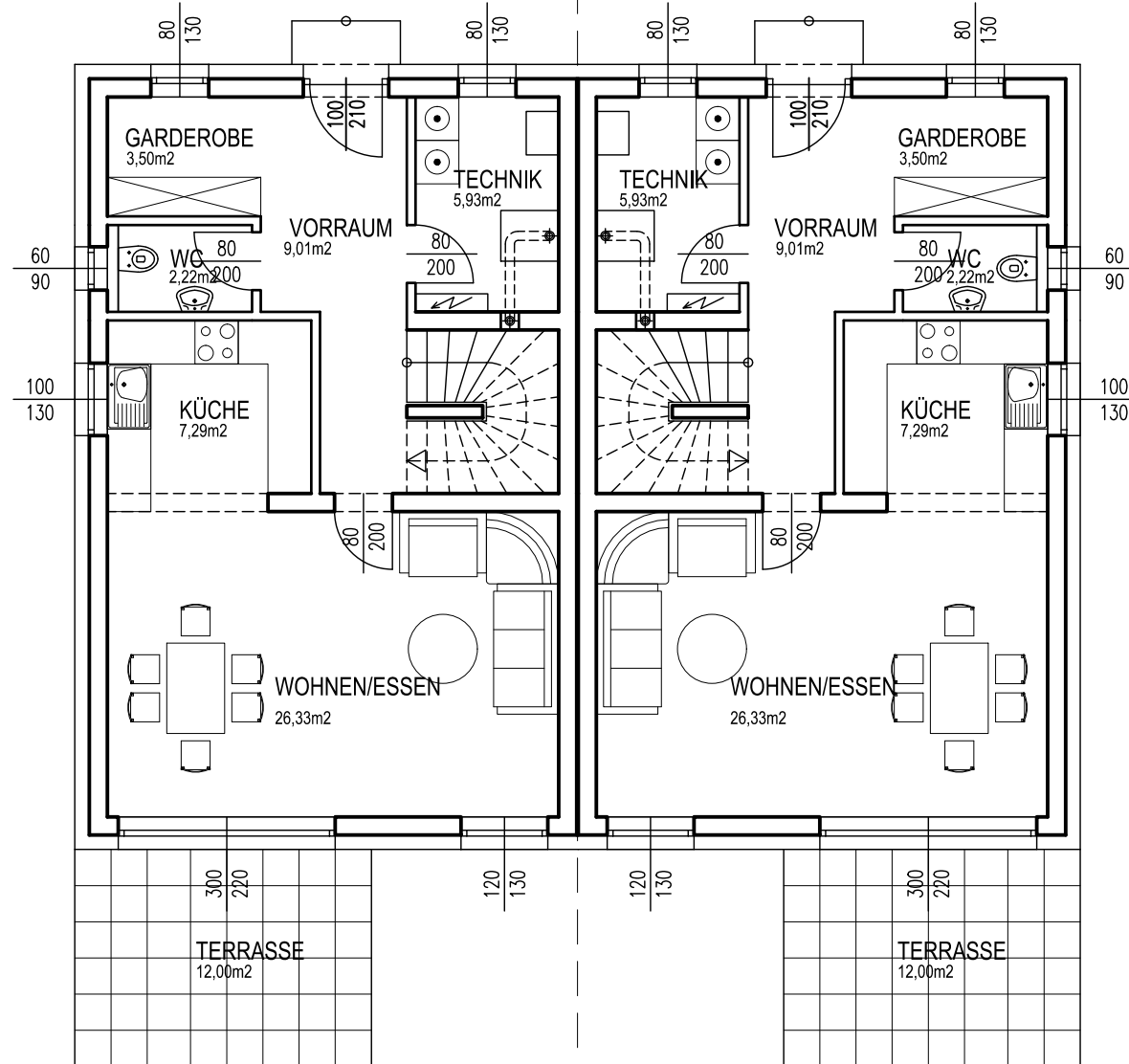
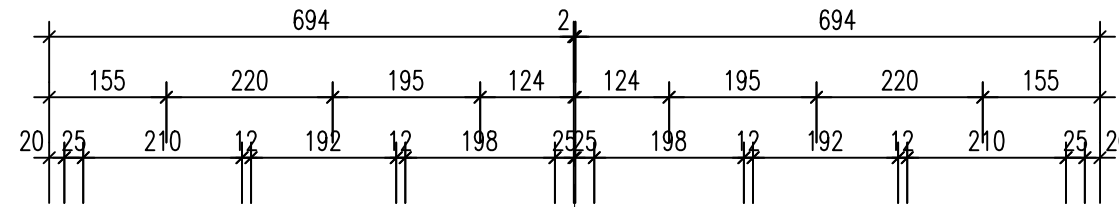
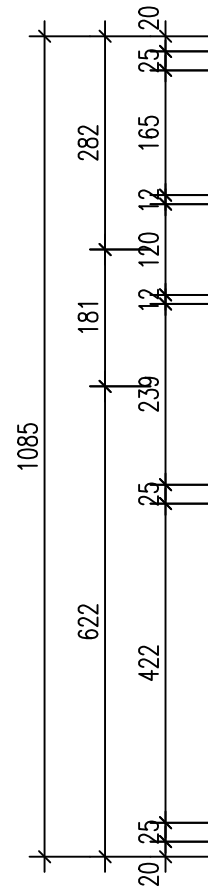
Tel.: 0732 / 94 70 34
Fax.: 0732 / 94 70 35
Mail: office@pqb.at

DOPPELHAUS STANDARD

TYP 2A (2)

GRUNDRISS ERDGESCHOSS

Maßstab: 1:100 Datum: 14.10.2021 Gez.: Weber Plannr.: TI_2A (2)_a





TREND

IMMOTREUHAND GMBH
Immobilien, Bauträger u. Bausysteme

Kaarstrasse 2
A-4040 Linz



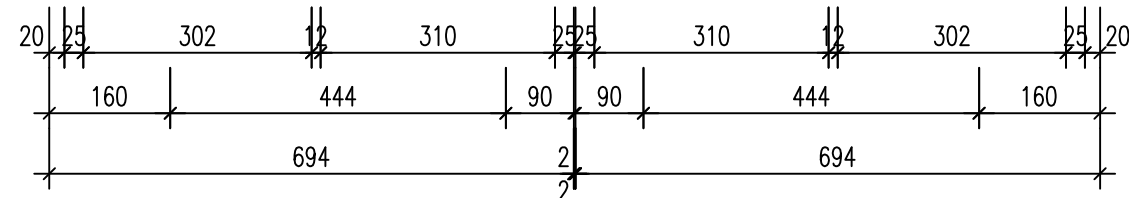
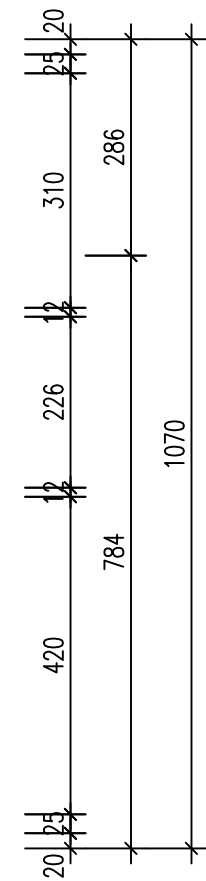
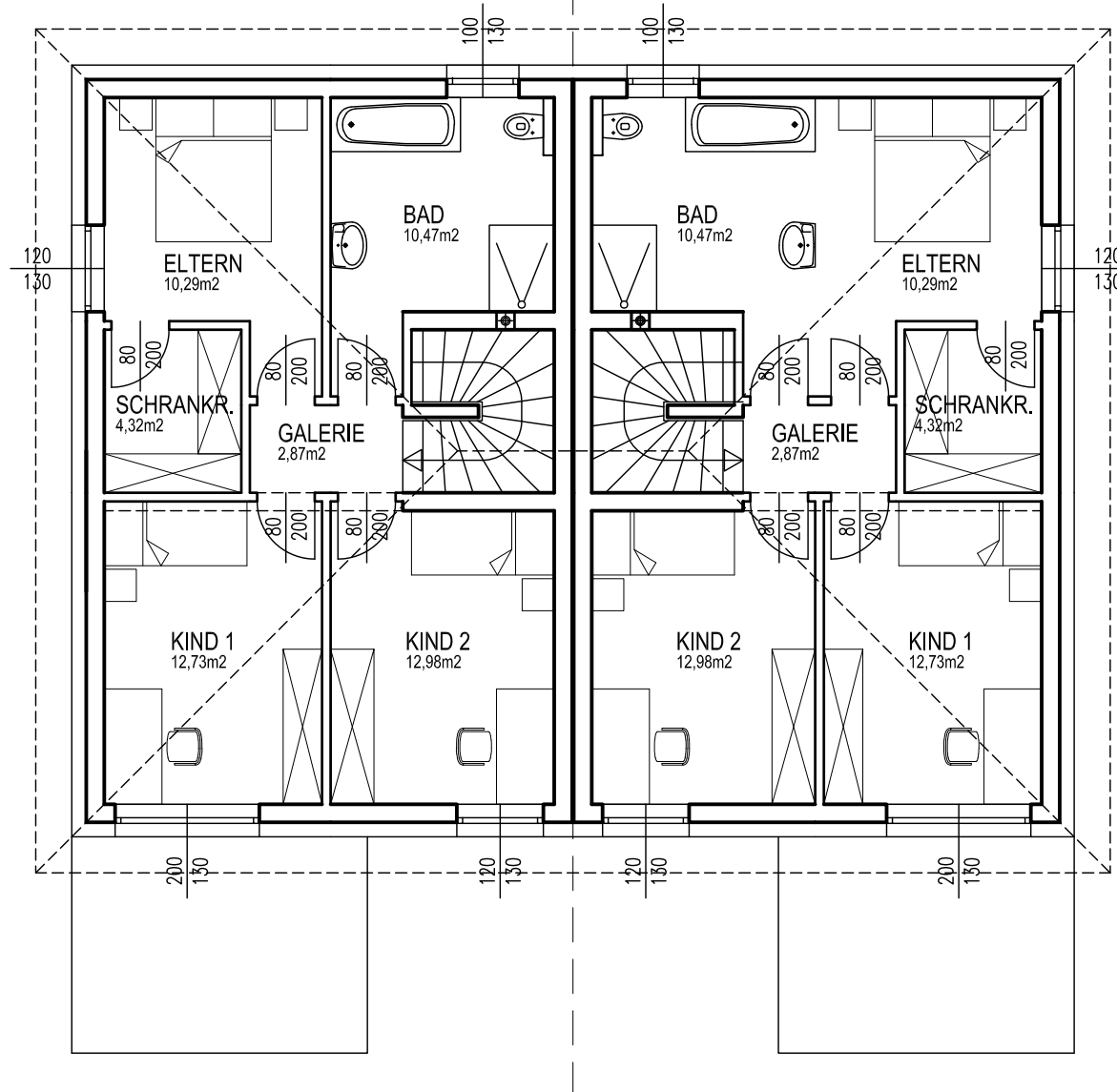
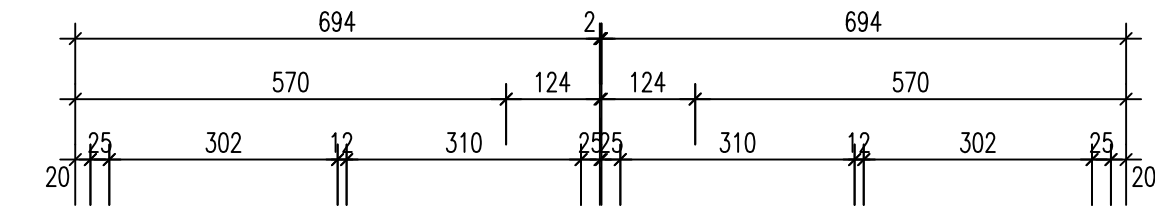
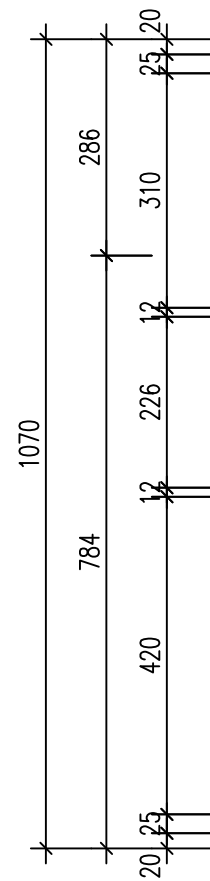
Tel.: 0732 / 94 70 34
Fax.: 0732 / 94 70 35
Mail: office@pqb.at

DOPPELHAUS STANDARD

TYP 2A (2)

GRUNDRISS OBERGESCHOSS

| | | | |
|----------|------------|-------|-------------|
| Maßstab: | Datum: | Gez.: | Plannr.: |
| 1:100 | 14.10.2021 | Weber | TI_2A (2)_a |





TREND

IMMOTREUHAND GMBH
Immobilien, Bauträger u. Bausysteme

Kaarstrasse 2
A-4040 Linz



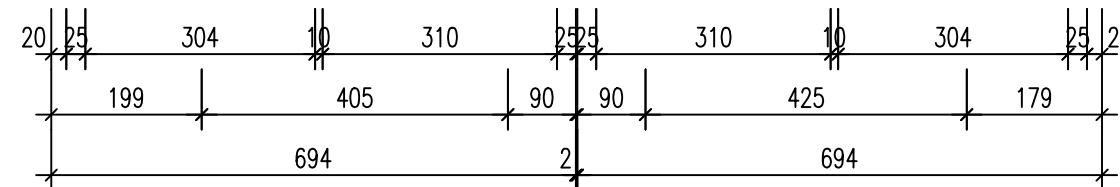
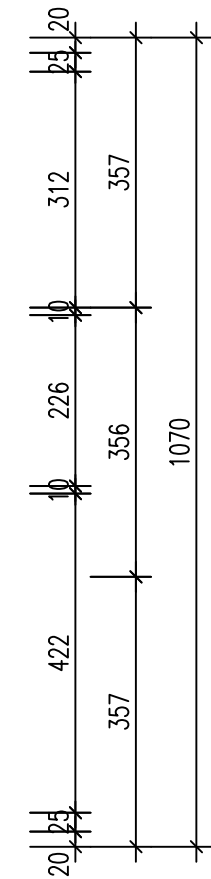
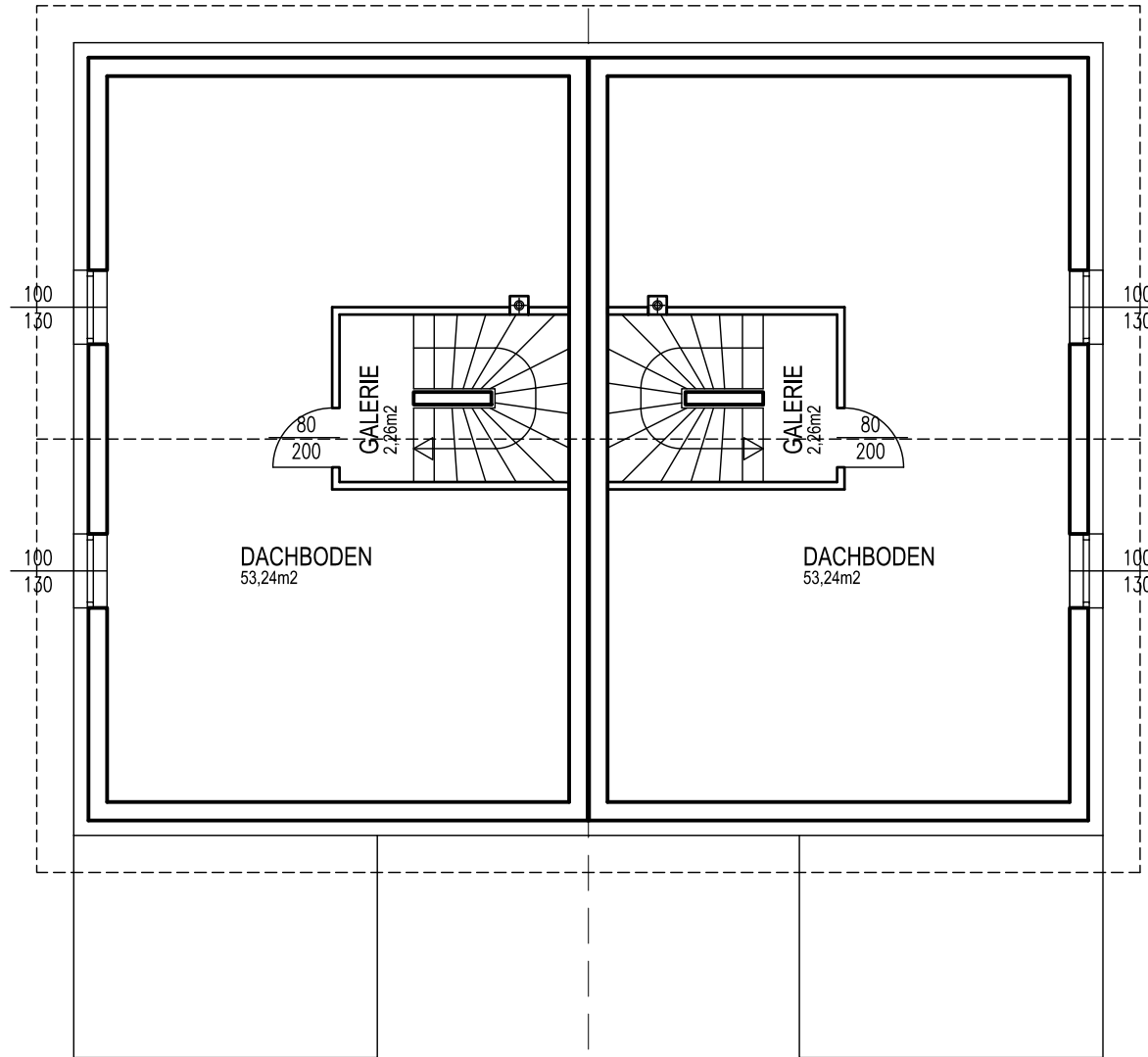
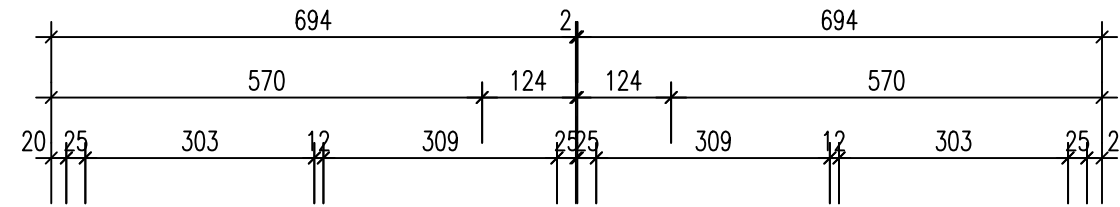
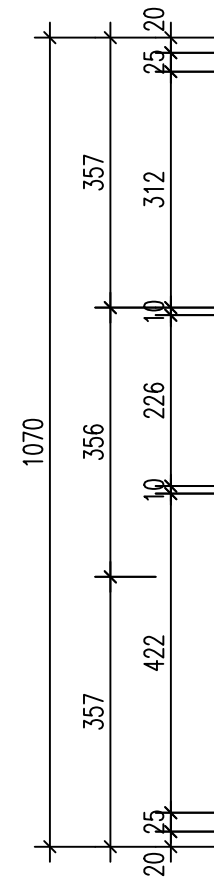
Tel.: 0732 / 94 70 34
Fax.: 0732 / 94 70 35
Mail: office@pqb.at

DOPPELHAUS STANDARD

TYP 2A (3)

GRUNDRISS DACHGESCHOSS – LEER

| | | | |
|----------|------------|-------|-------------|
| Maßstab: | Datum: | Gez.: | Plannr.: |
| 1:100 | 14.10.2021 | Weber | TI_2A (3)_a |





TREND

IMMOTREUHAND GMBH
Immobilien, Bauträger u. Bausysteme

Kaarstrasse 2
A-4040 Linz



Tel.: 0732 / 94 70 34
Fax.: 0732 / 94 70 35
Mail: office@pqb.at

DOPPELHAUS STANDARD

TYP 2A (3)

GRUNDRISS DACHGESCHOSS – AUSGEBAUT

| | | | |
|----------|------------|-------|-------------|
| Maßstab: | Datum: | Gez.: | Plannr.: |
| 1:100 | 14.10.2021 | Weber | TI_2A (3)_a |

