



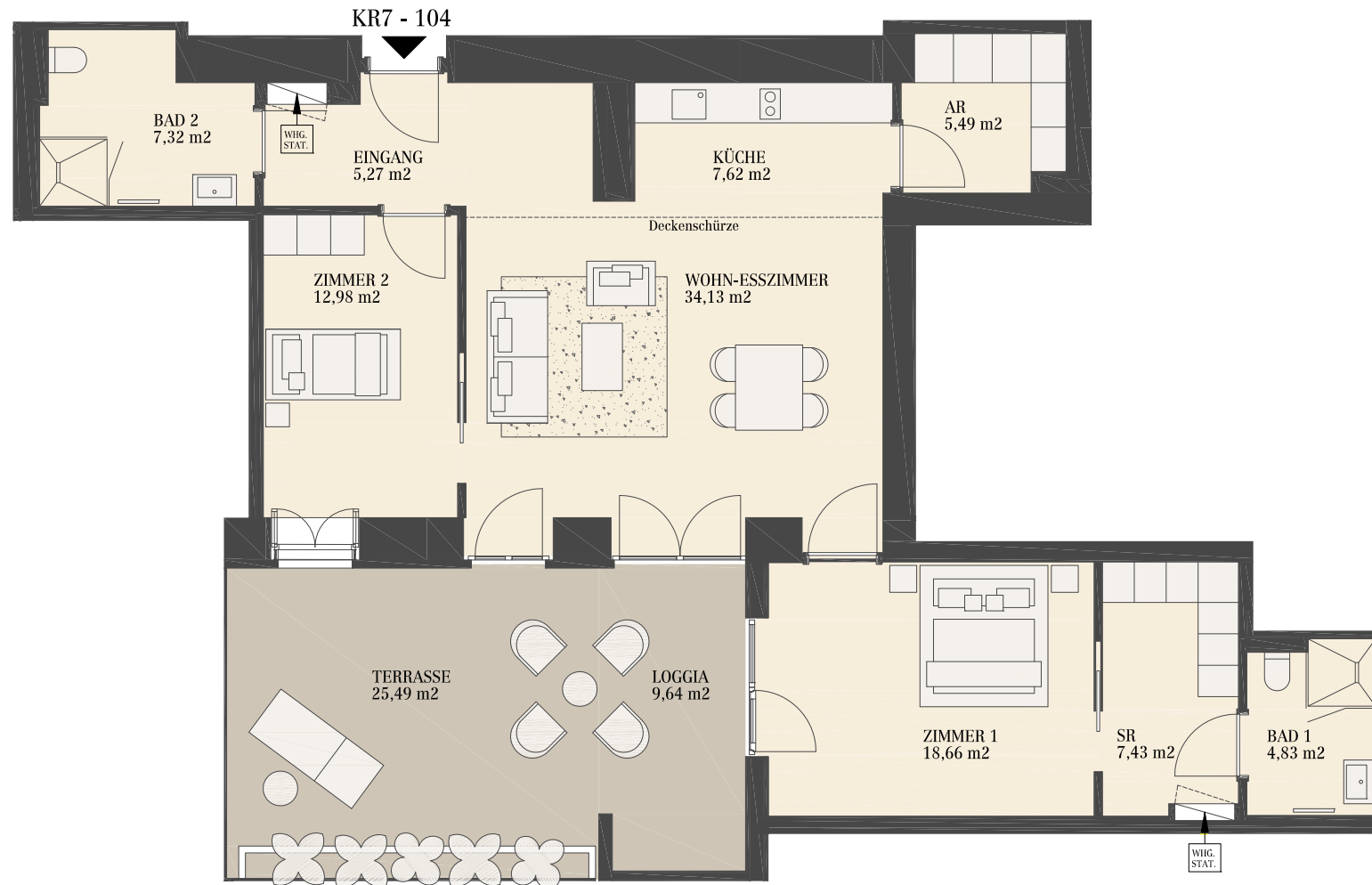
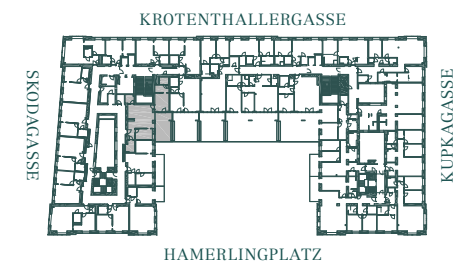
# DOWNTOWN RESIDENCE

JOSEFSTADT

## KR7 - TOP 104 1. OBERGESCHOSS

Krotenthallergasse 7, 1080 Wien

<b>Wohnnutzfläche</b>	<b>103,75 m<sup>2</sup></b>
<b>Terrassen / Loggia gesamt</b>	<b>35,13 m<sup>2</sup></b>
Terrasse	25,49 m <sup>2</sup>
Loggia	9,64 m <sup>2</sup>



0 1 5m

Originalgröße A4  
KR7.01.04

info@residenz-josefstadt.at  
www.residenz-josefstadt.at