

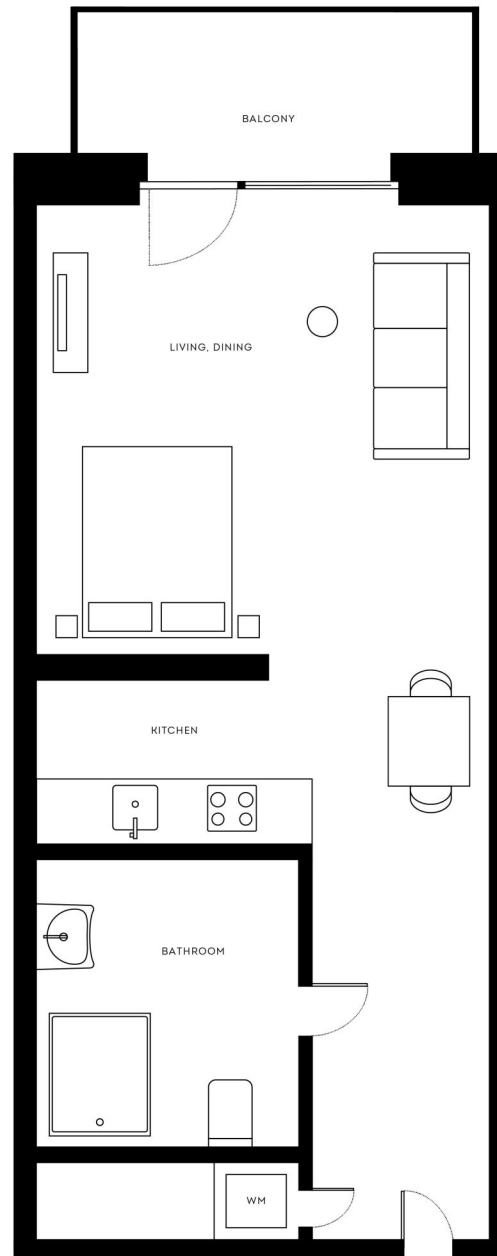


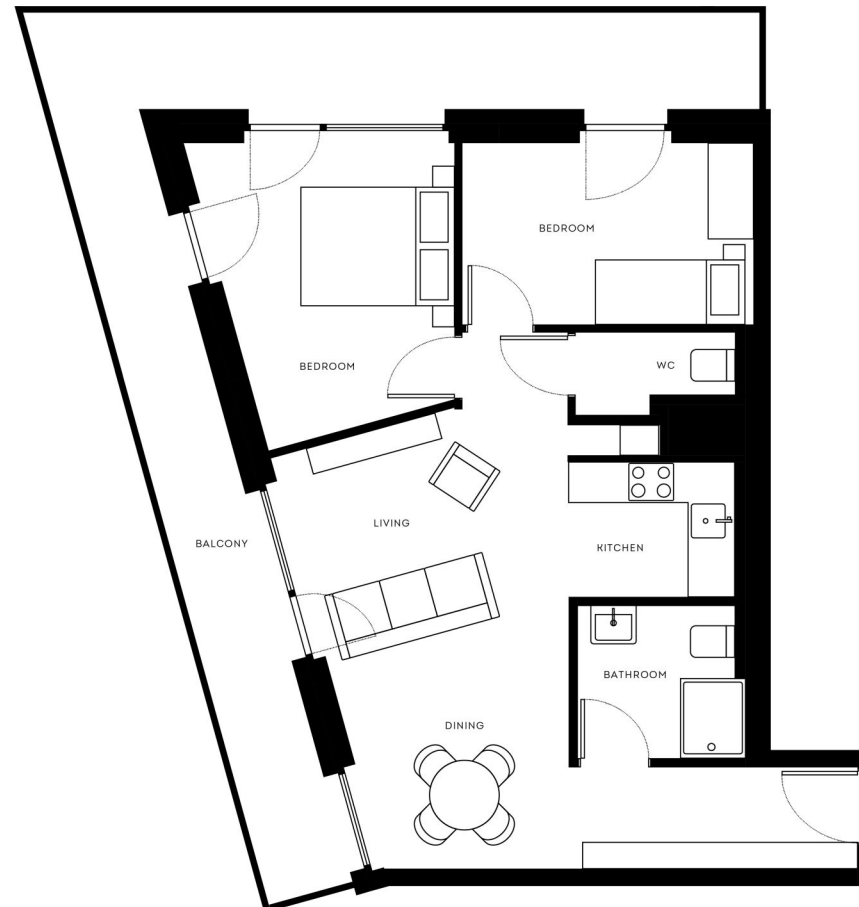
# Ihre EHL Planmappe

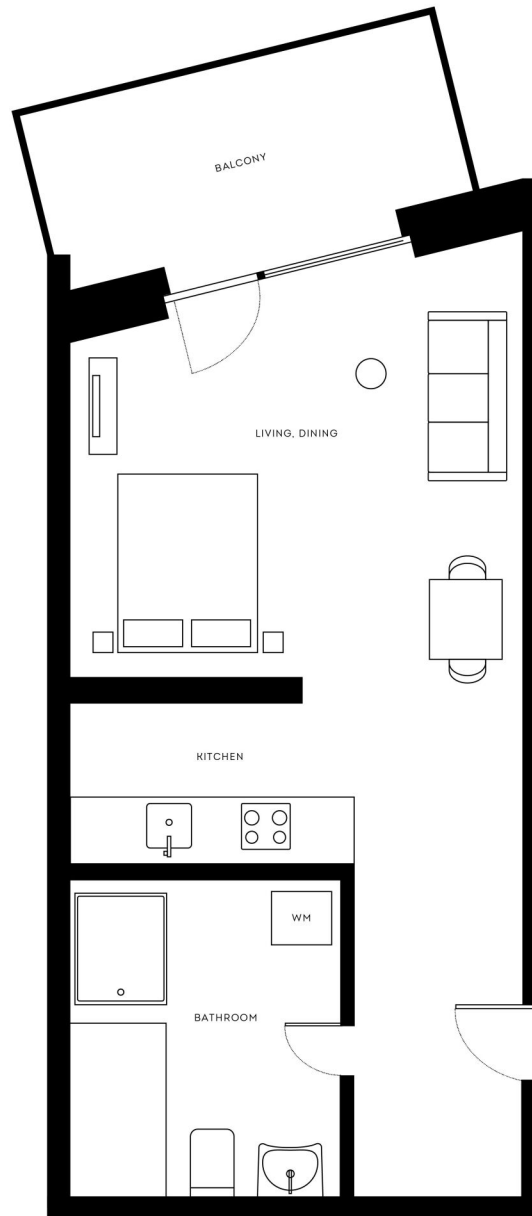
Dresdner Straße 90, 1200 Wien

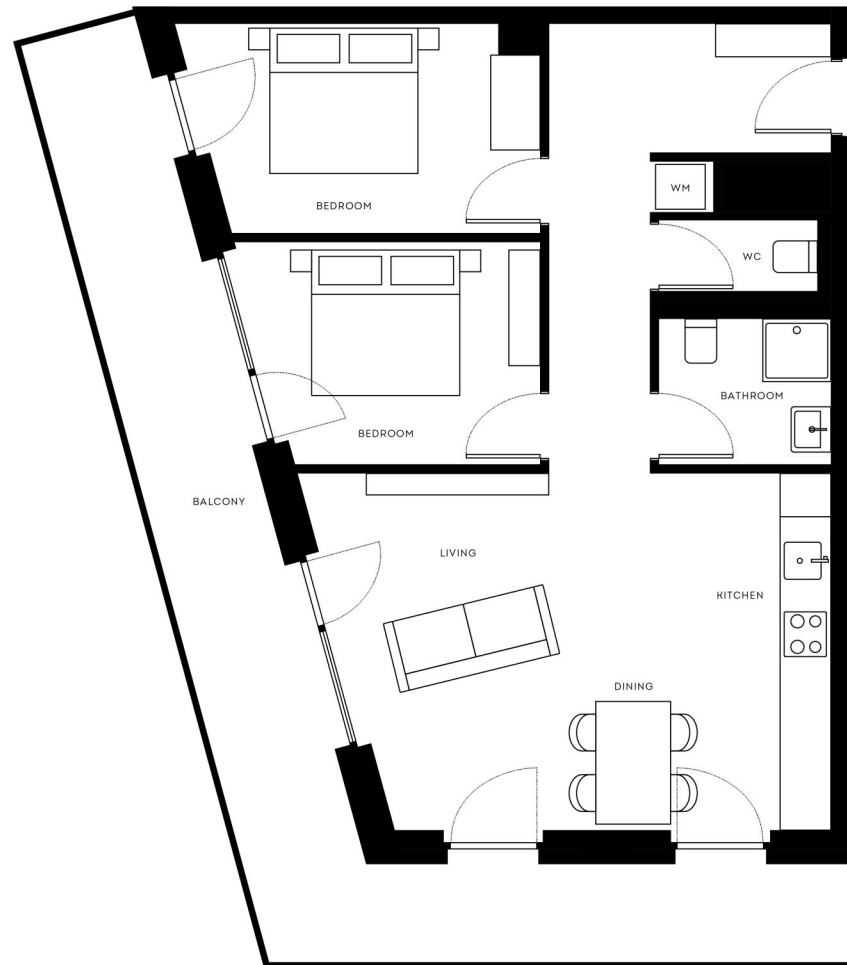
Wir leben  
Immobilien.

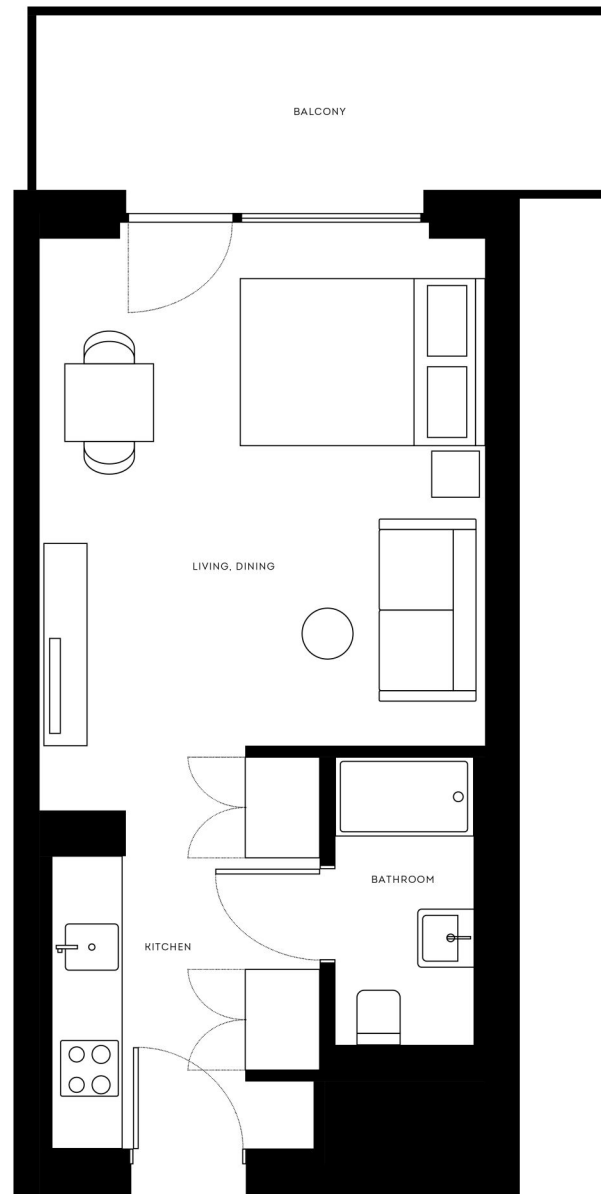


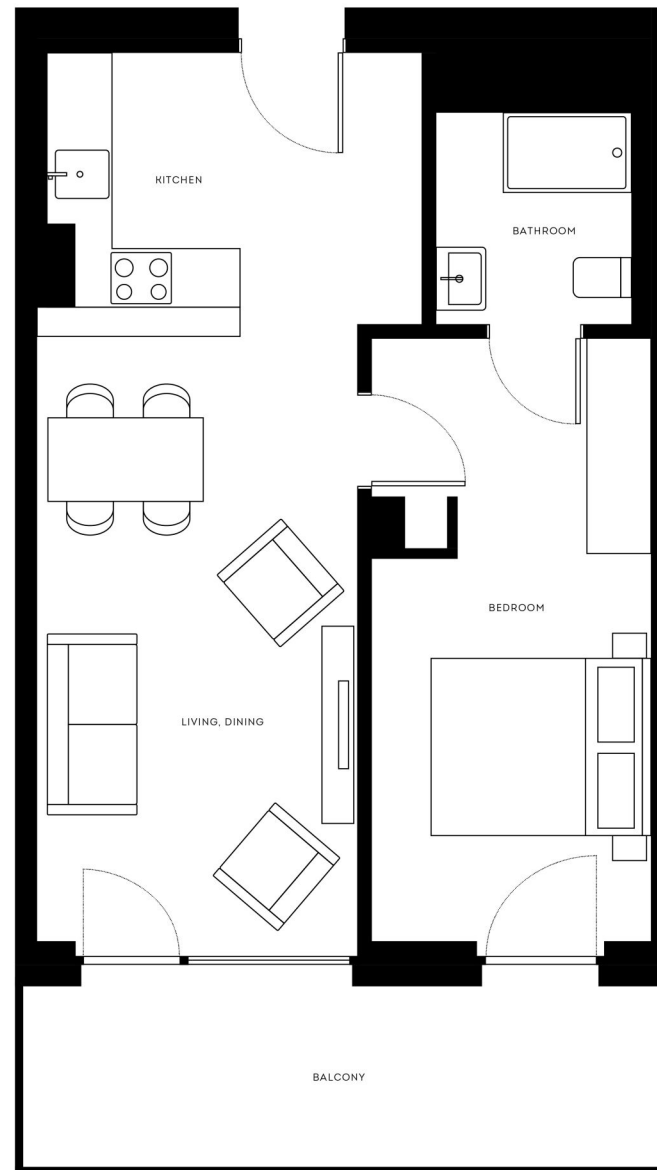


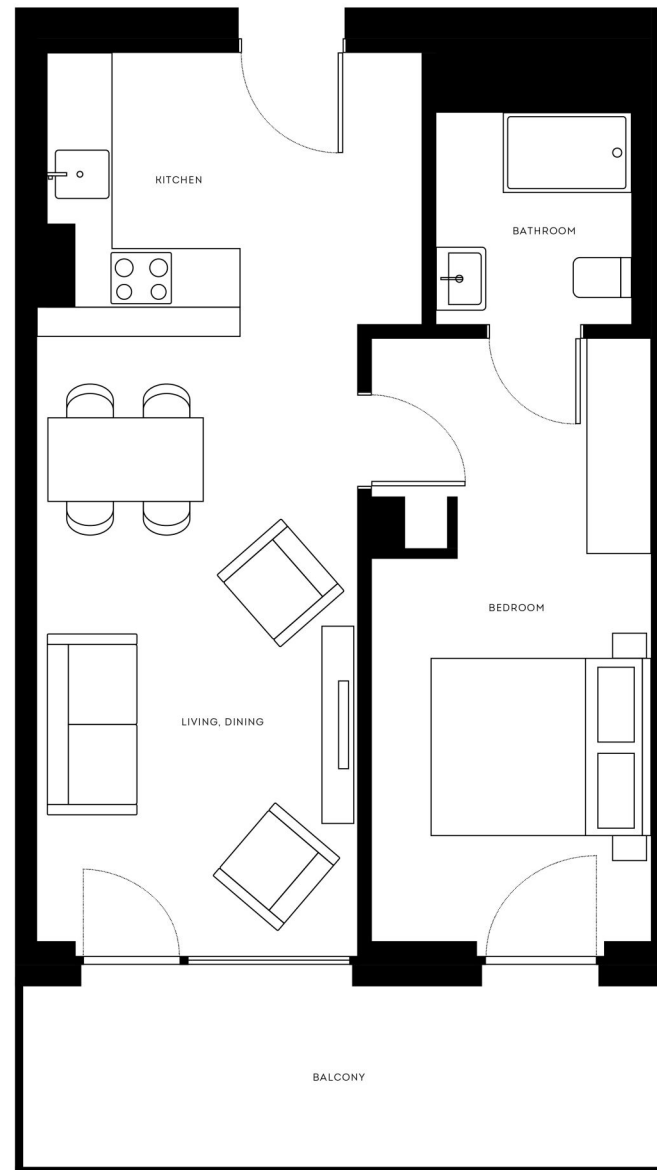


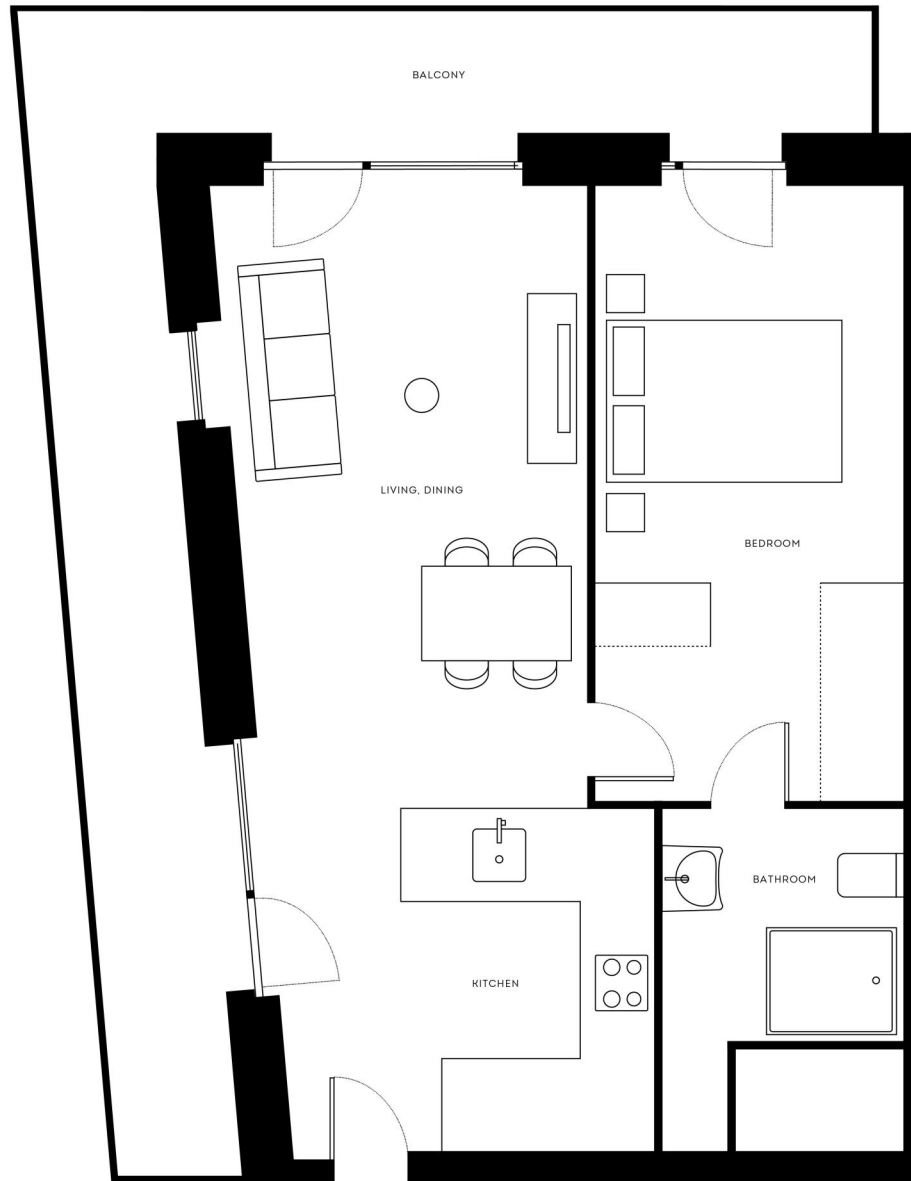


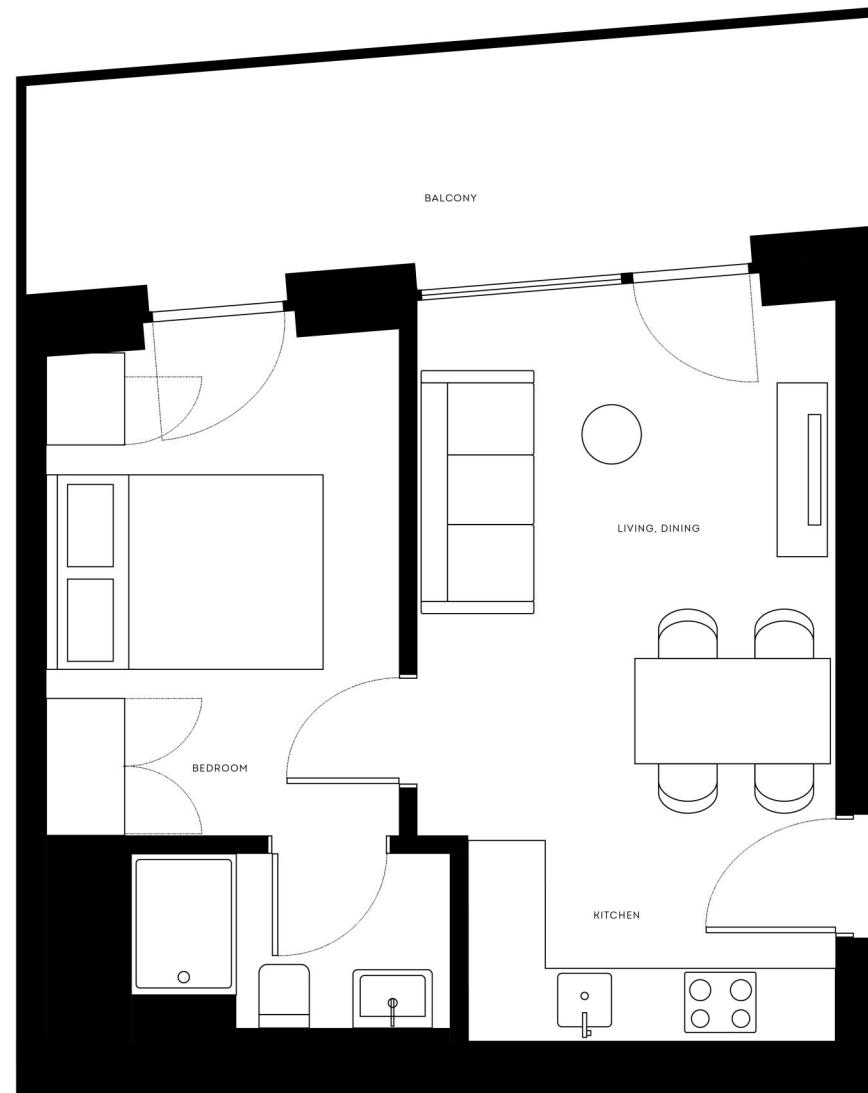


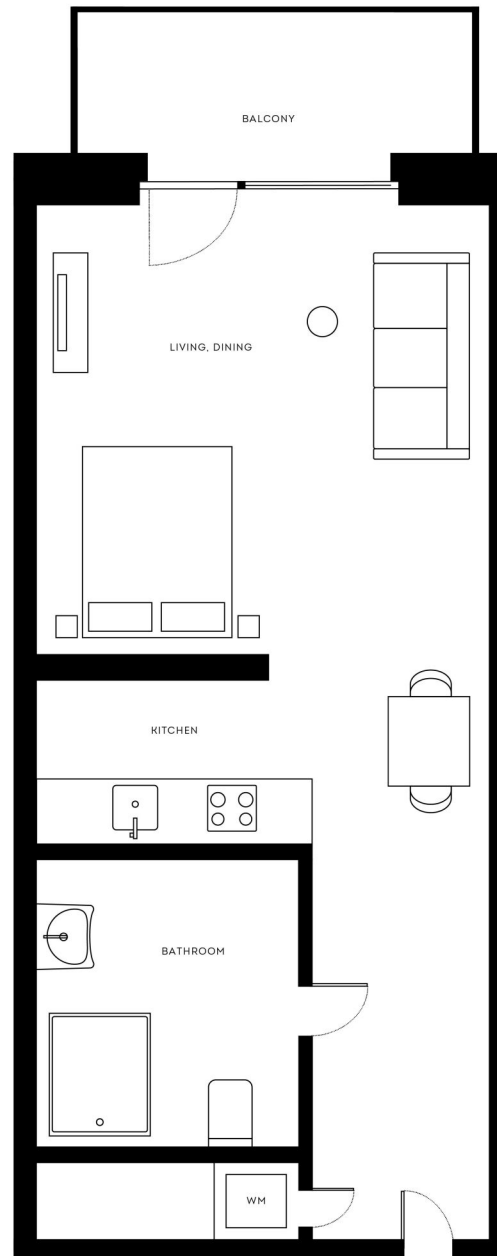


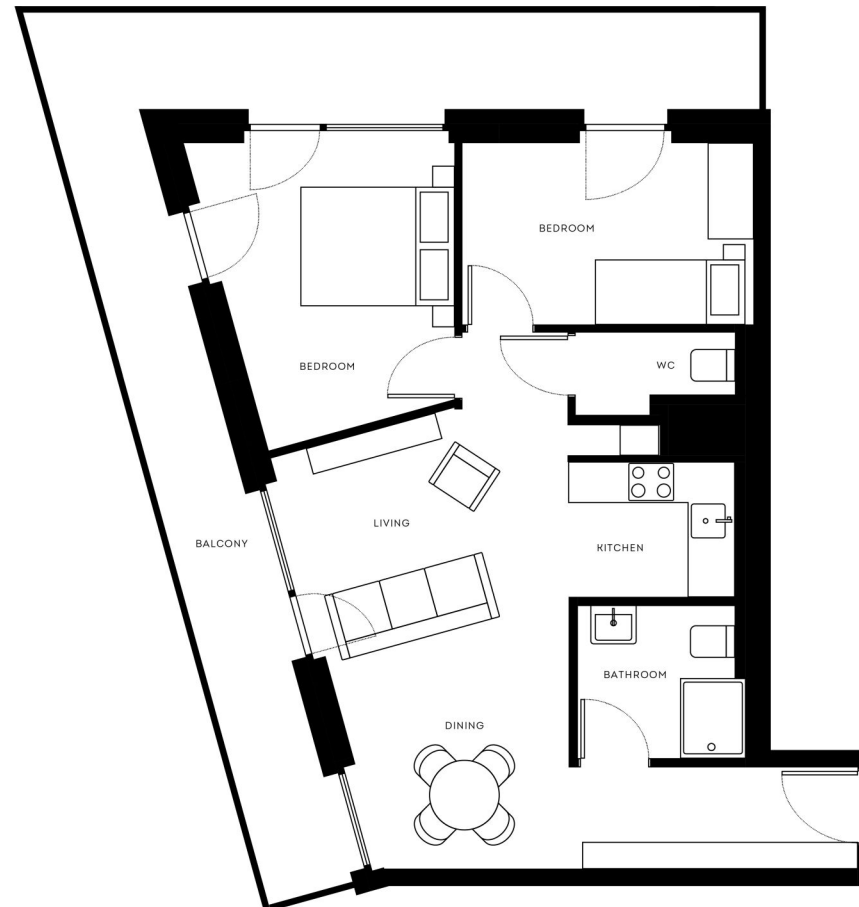


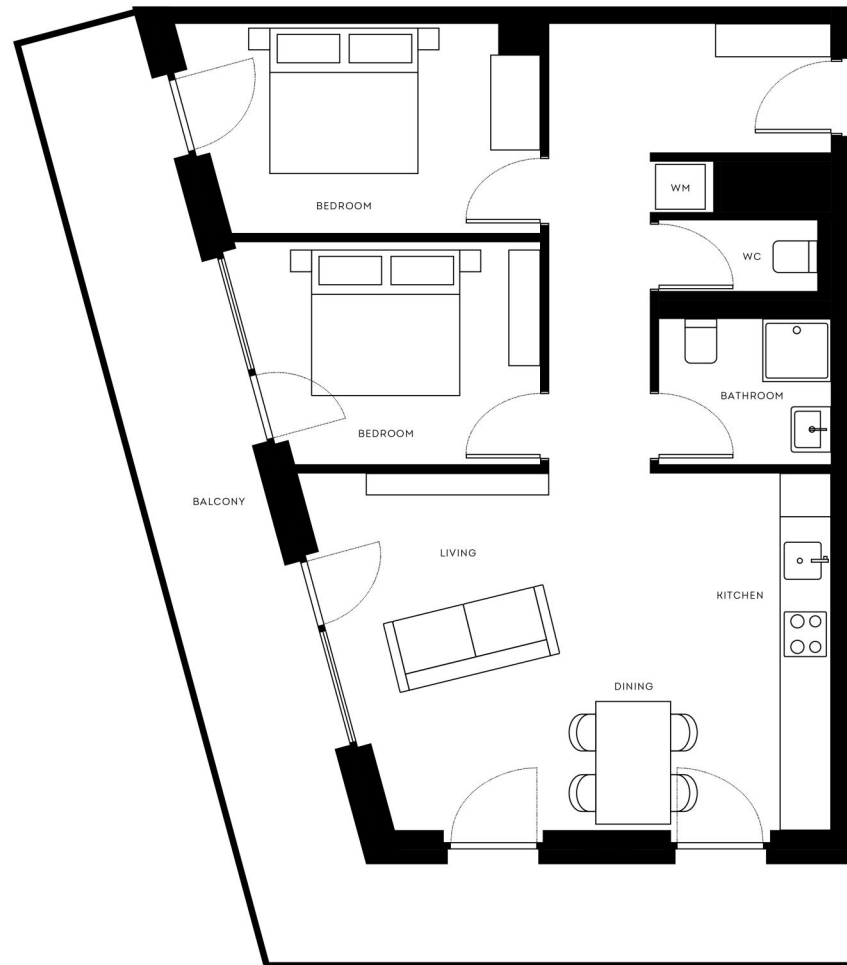


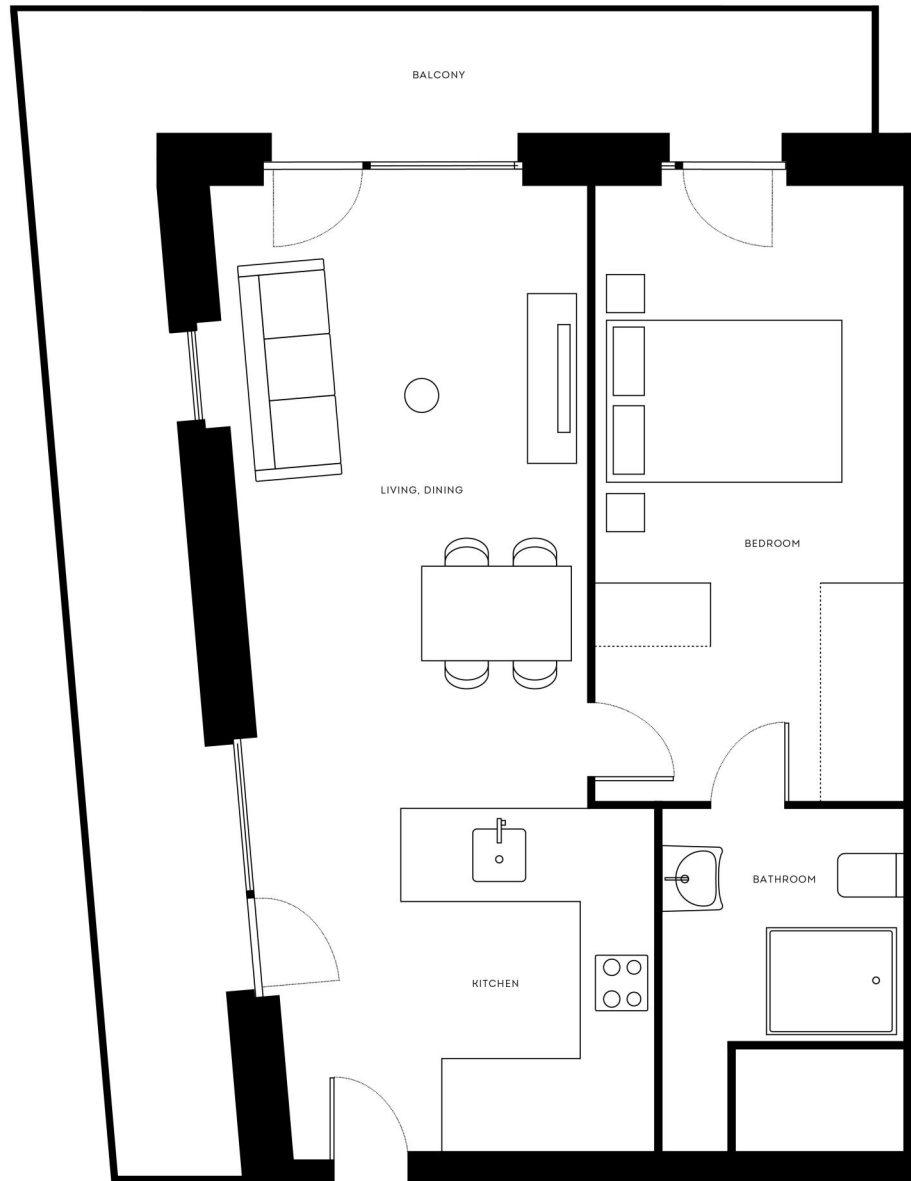


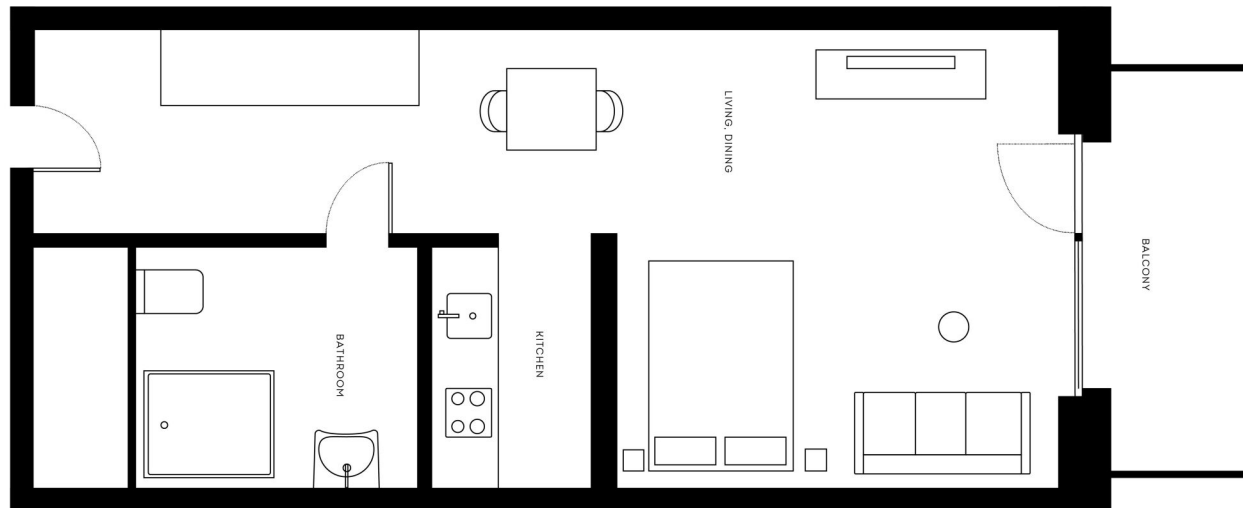


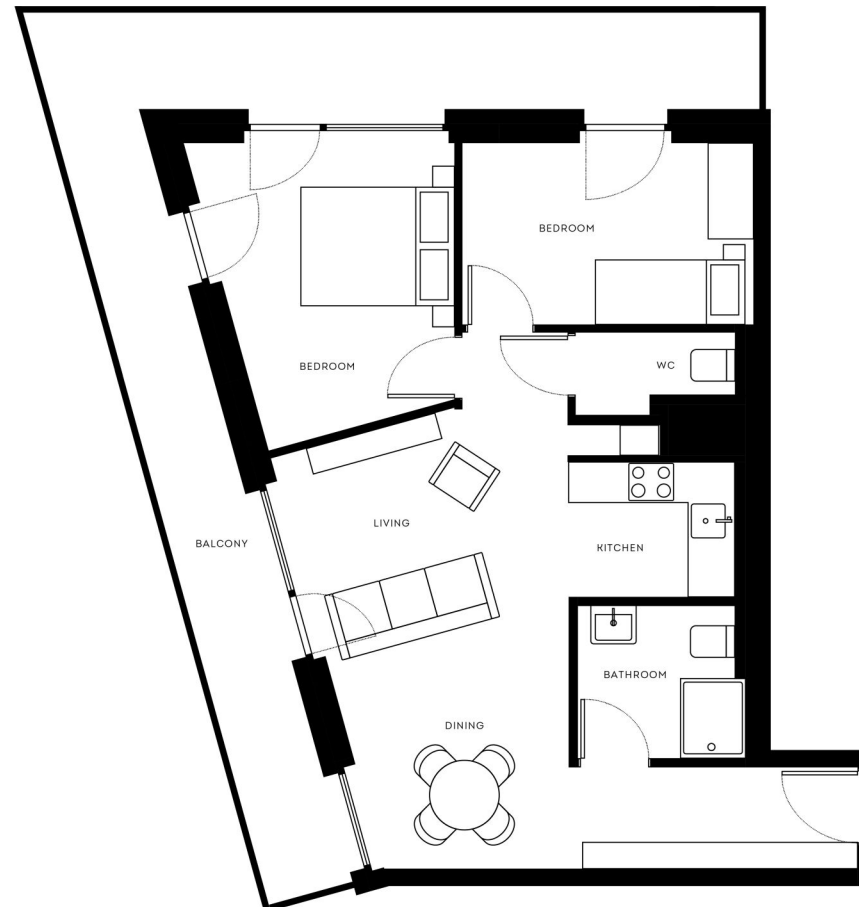


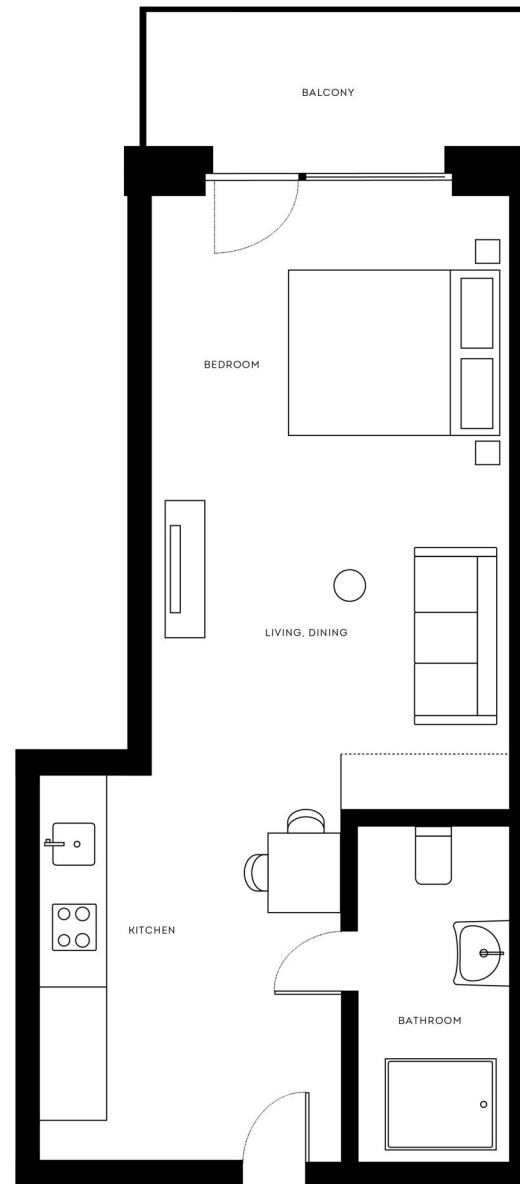


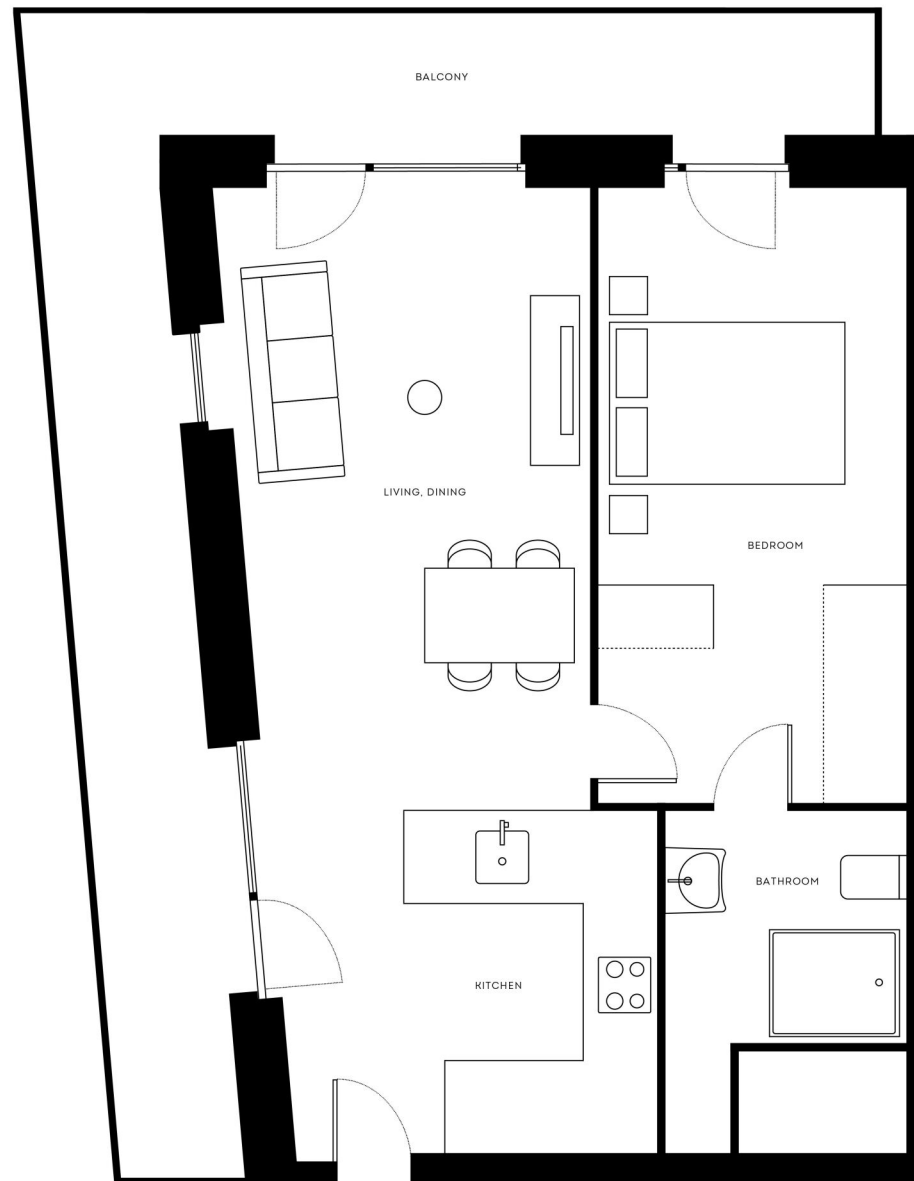


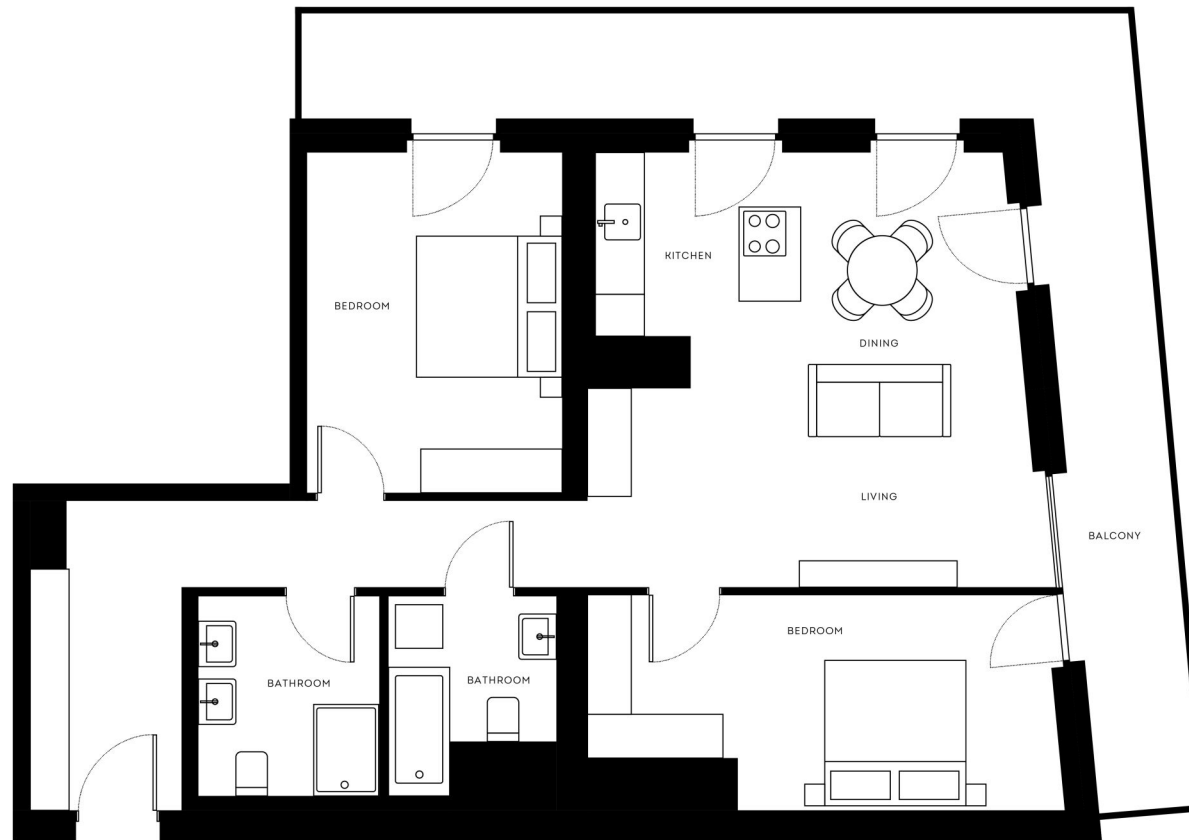


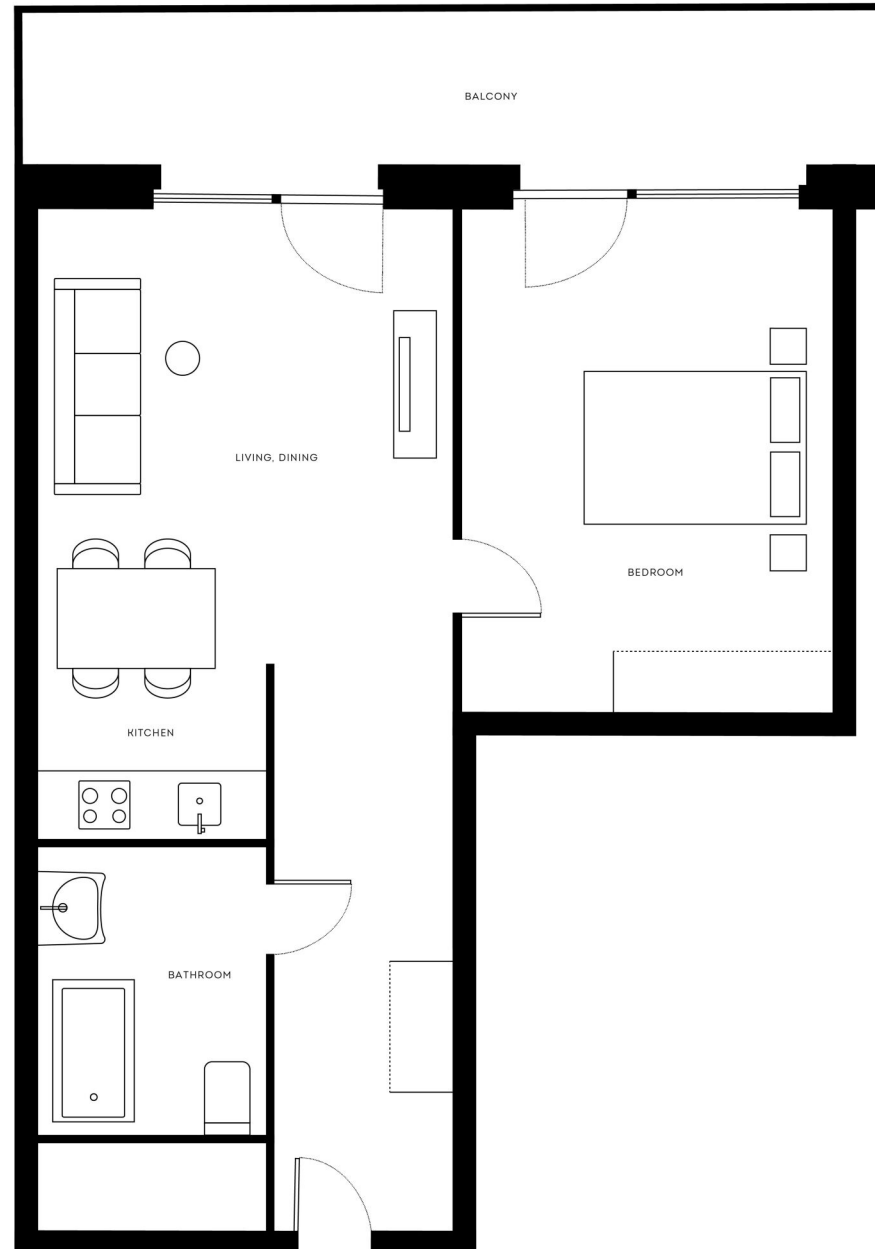


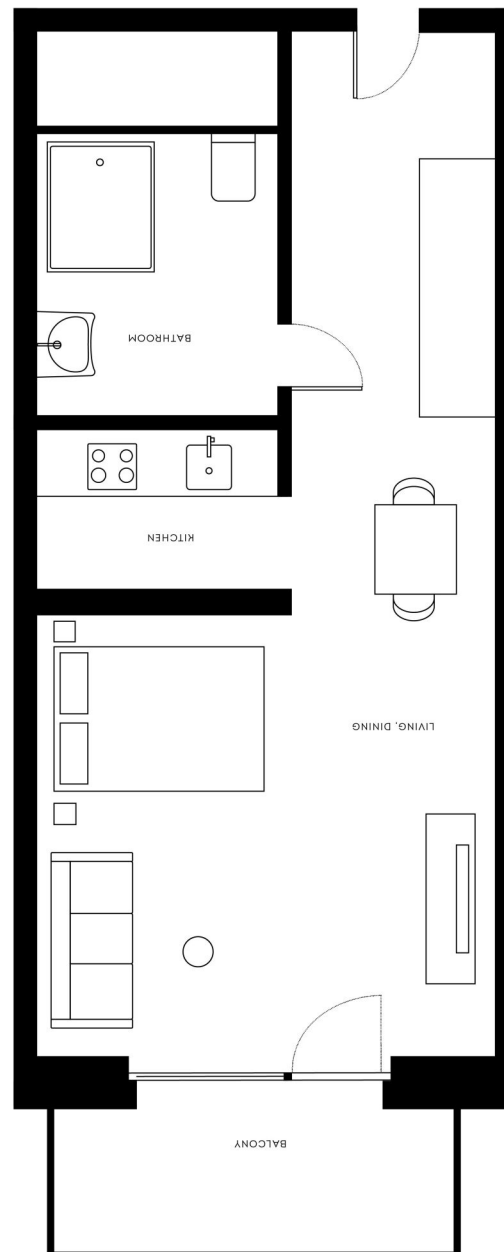


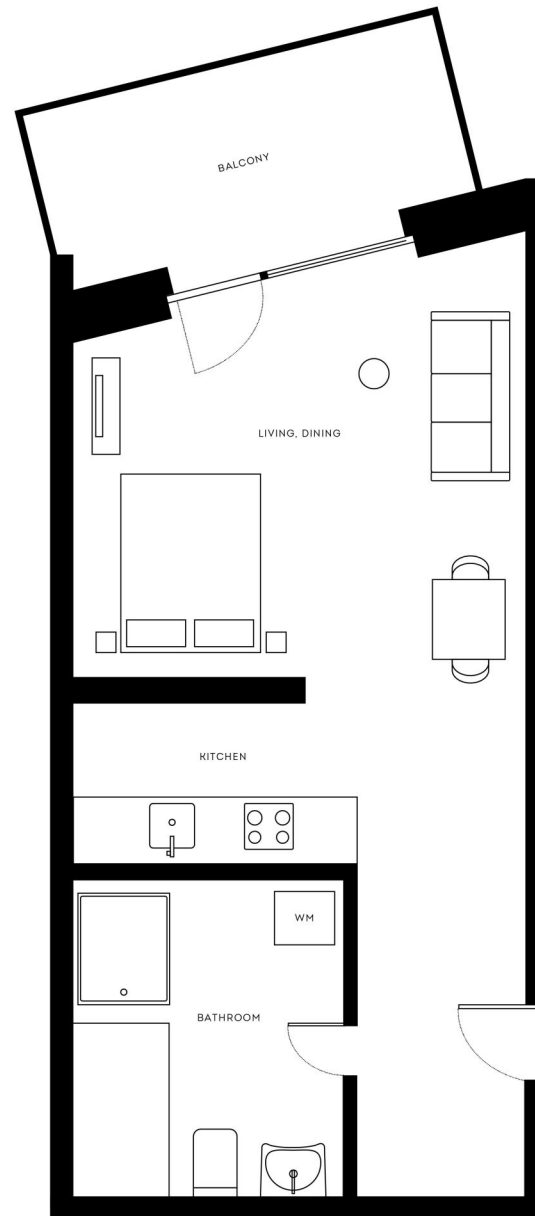


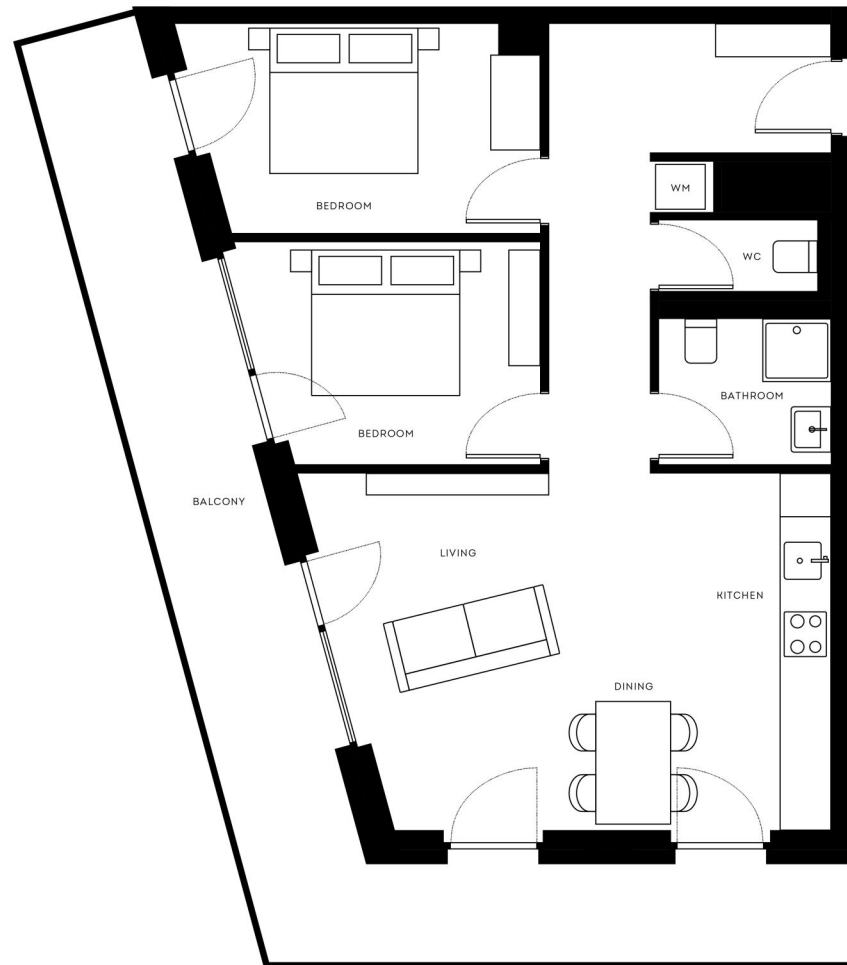


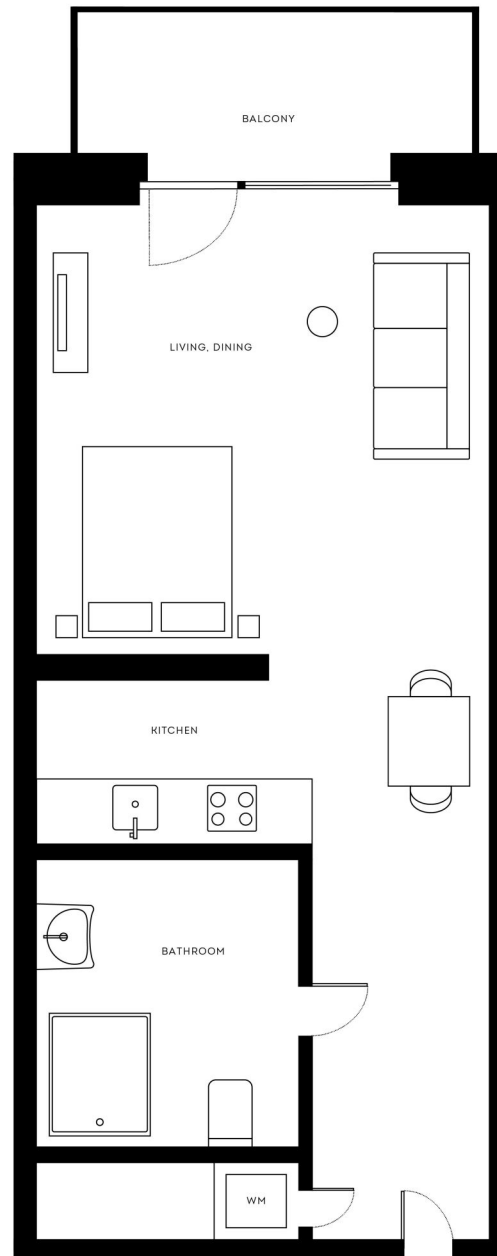


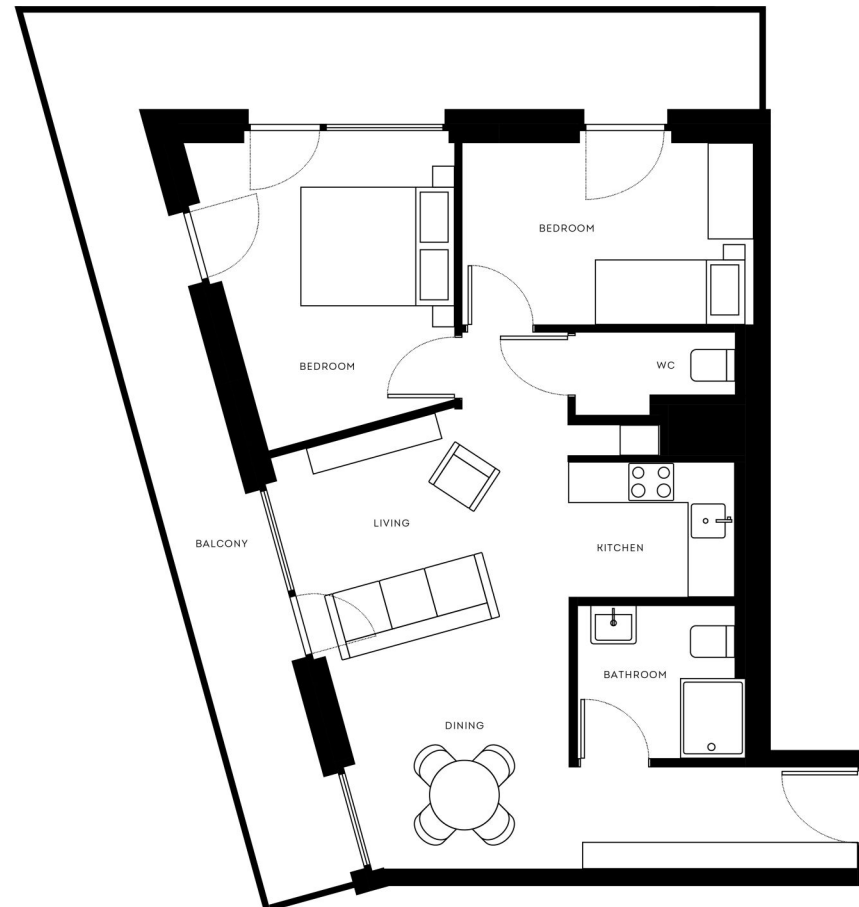


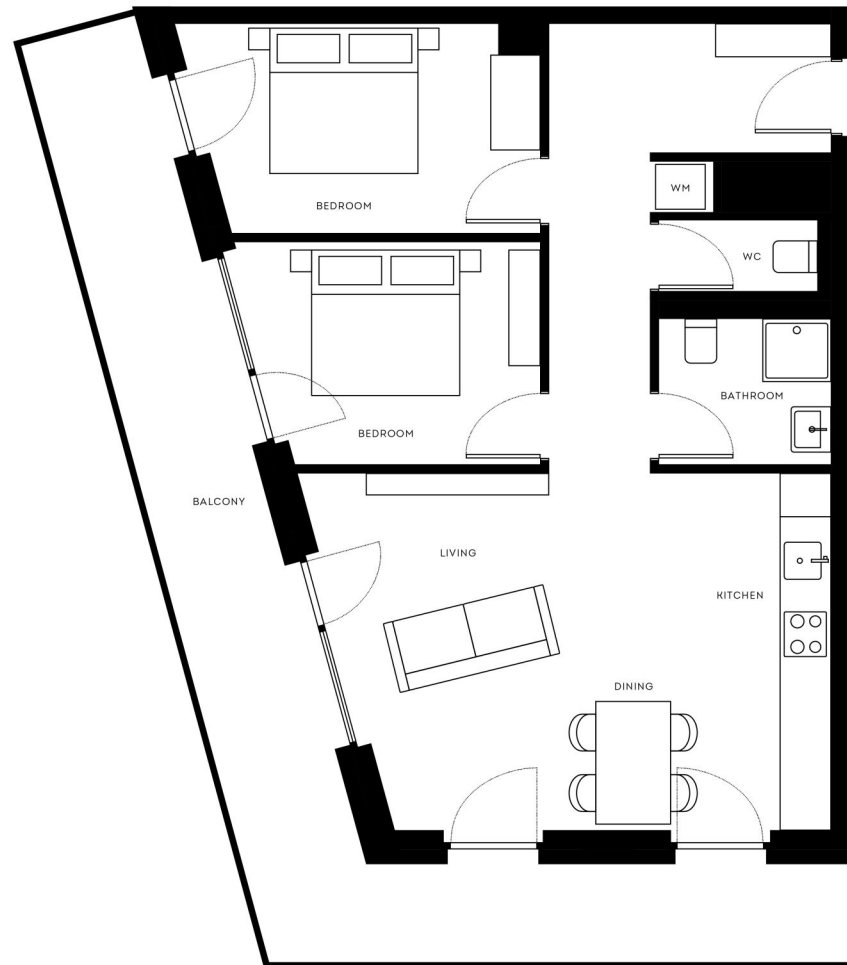


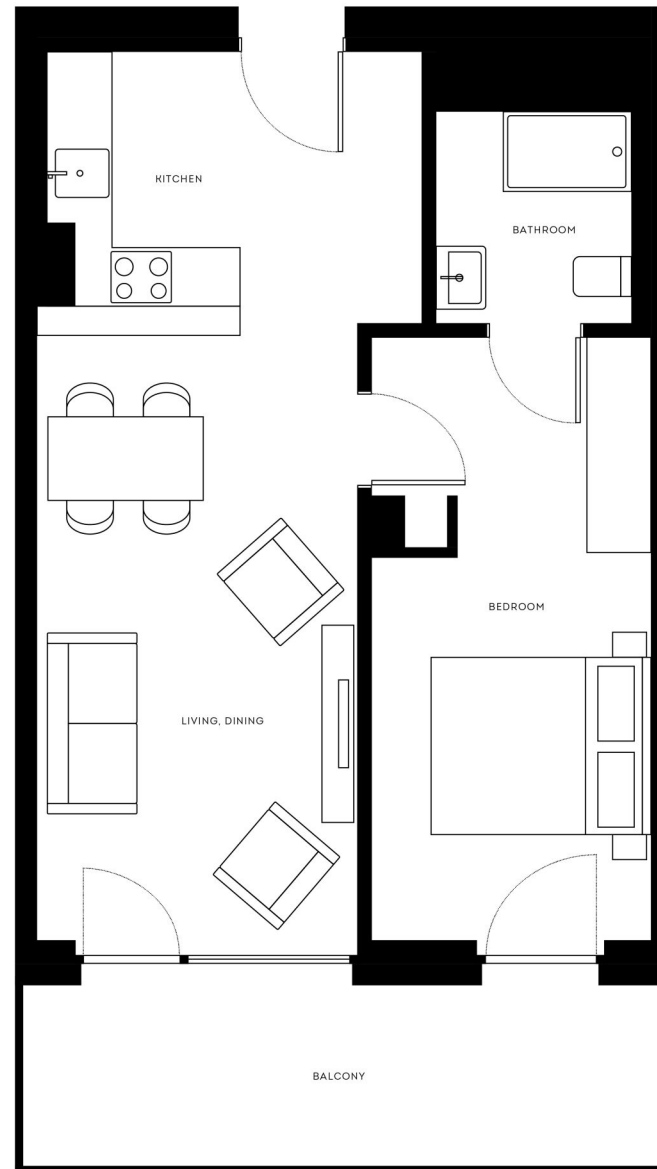


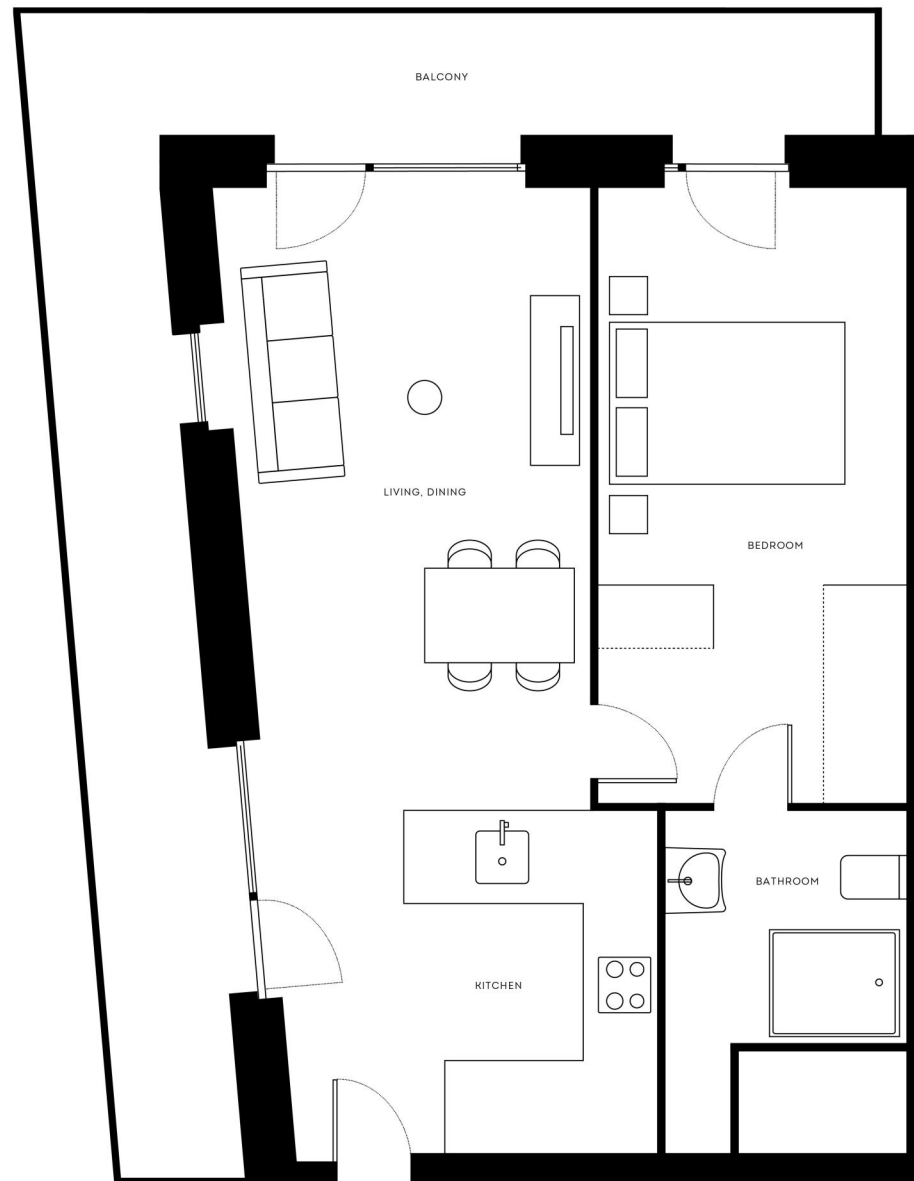


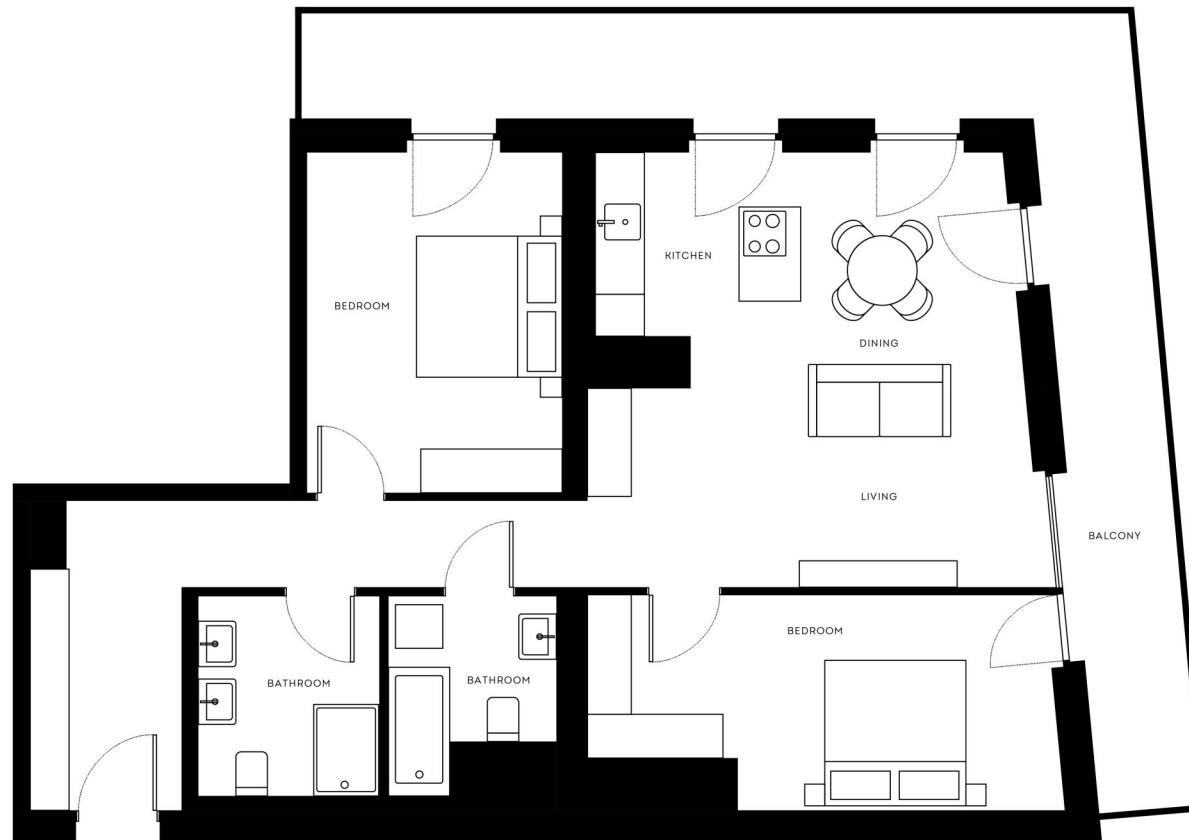


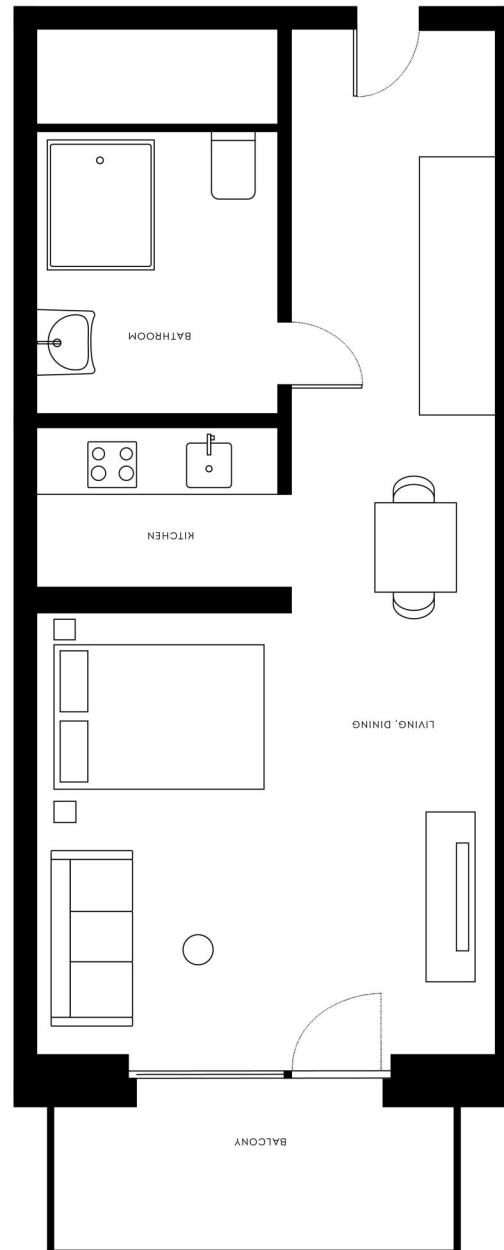


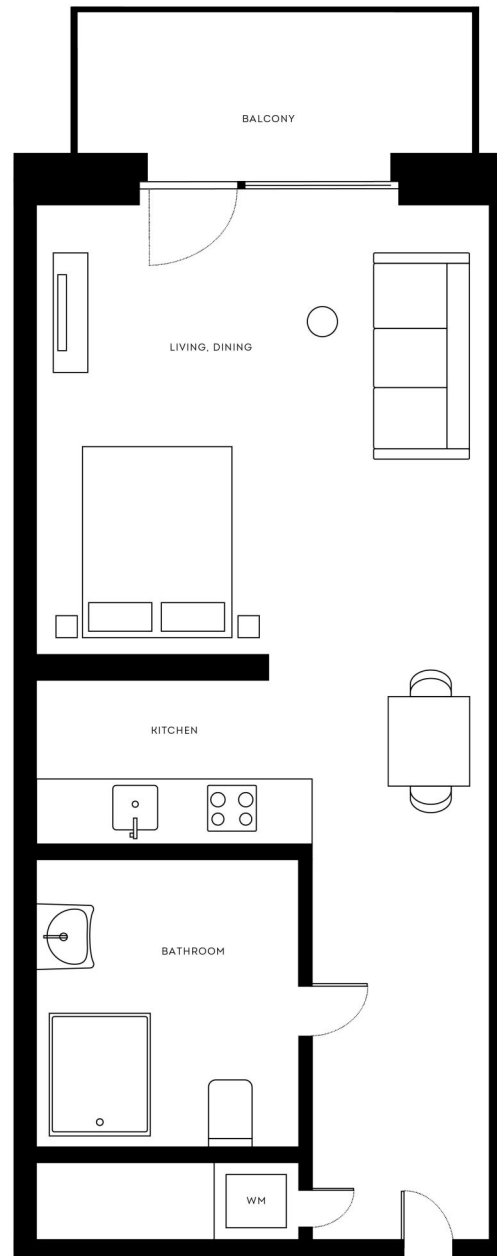


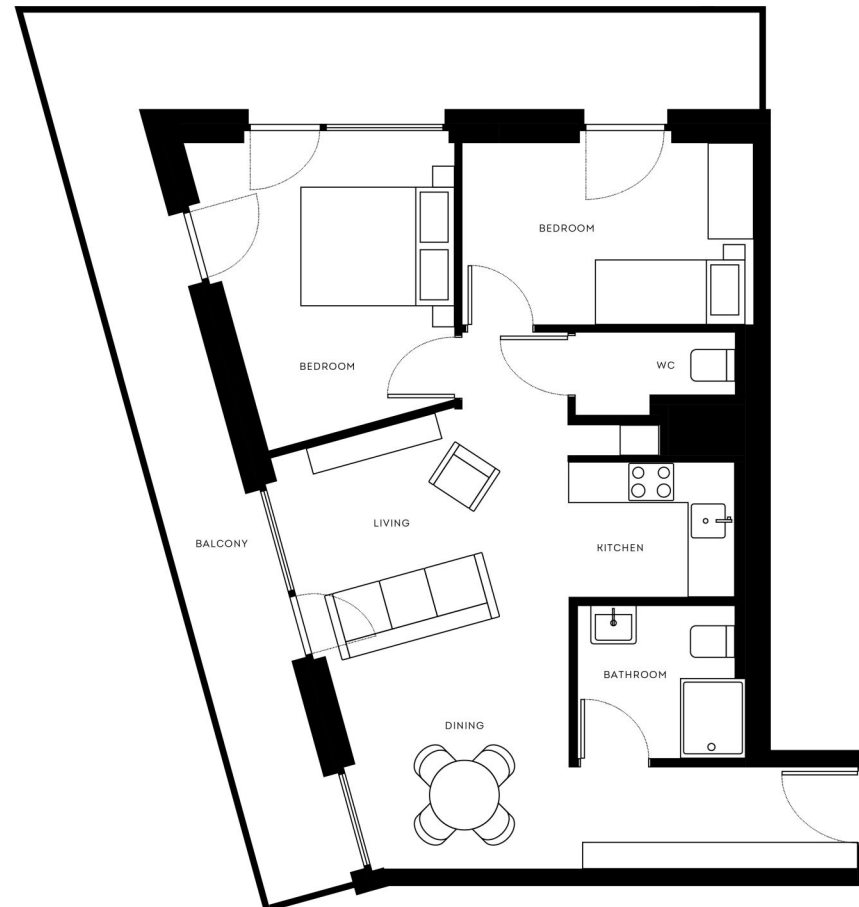


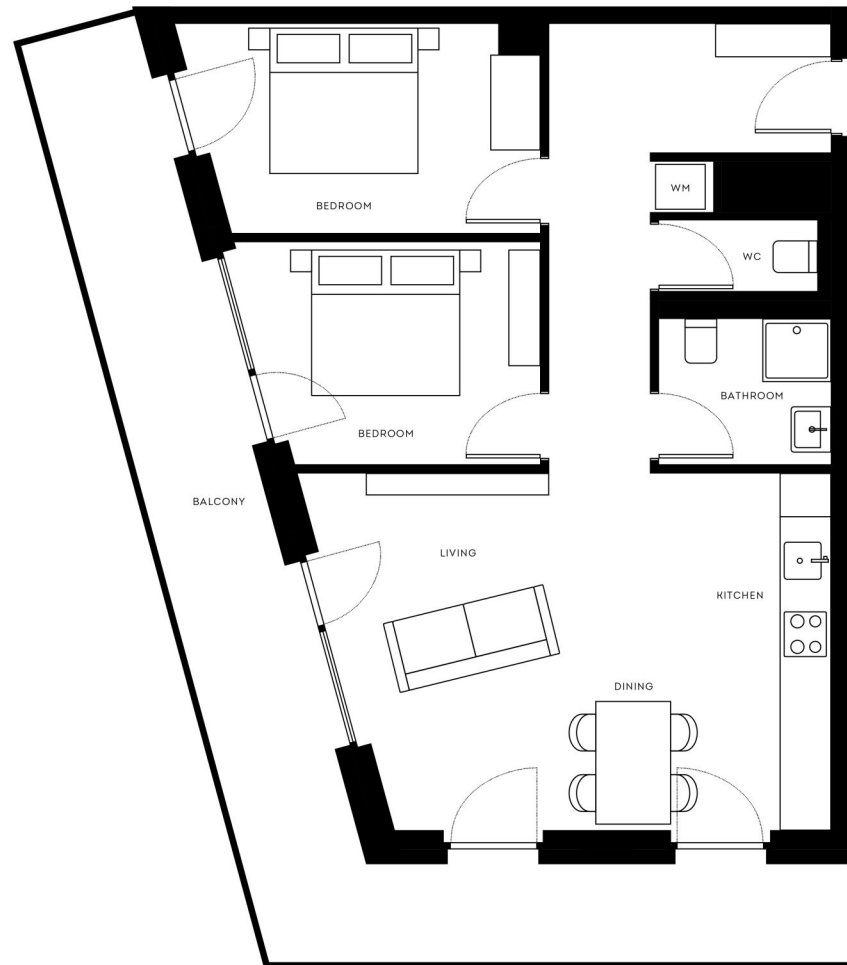


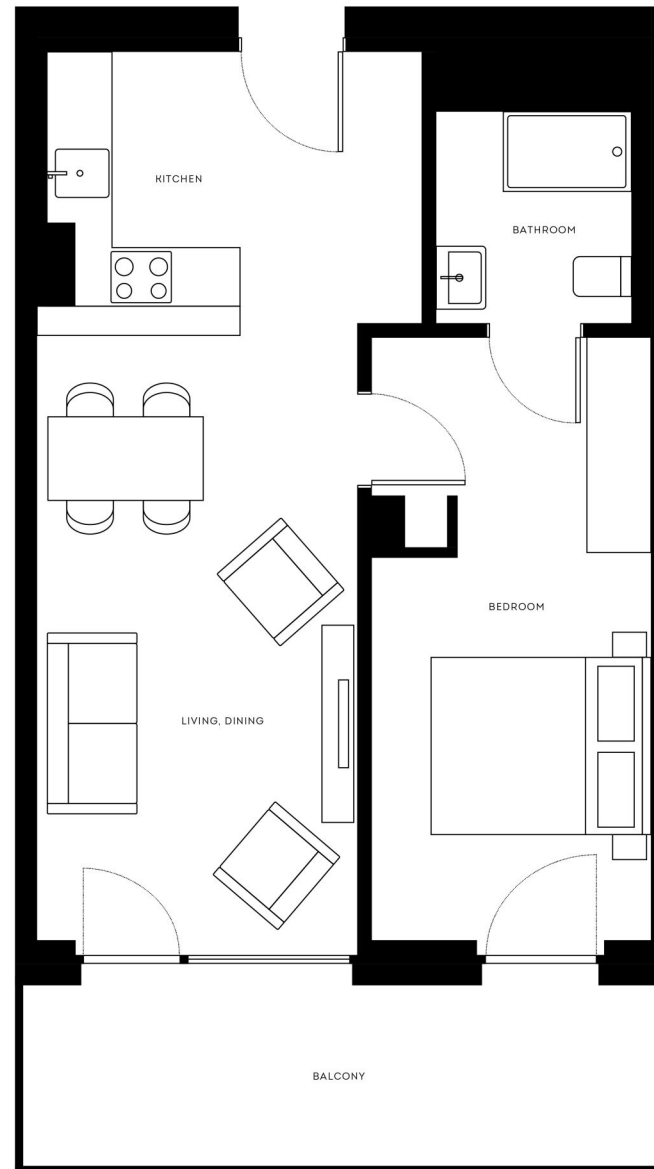


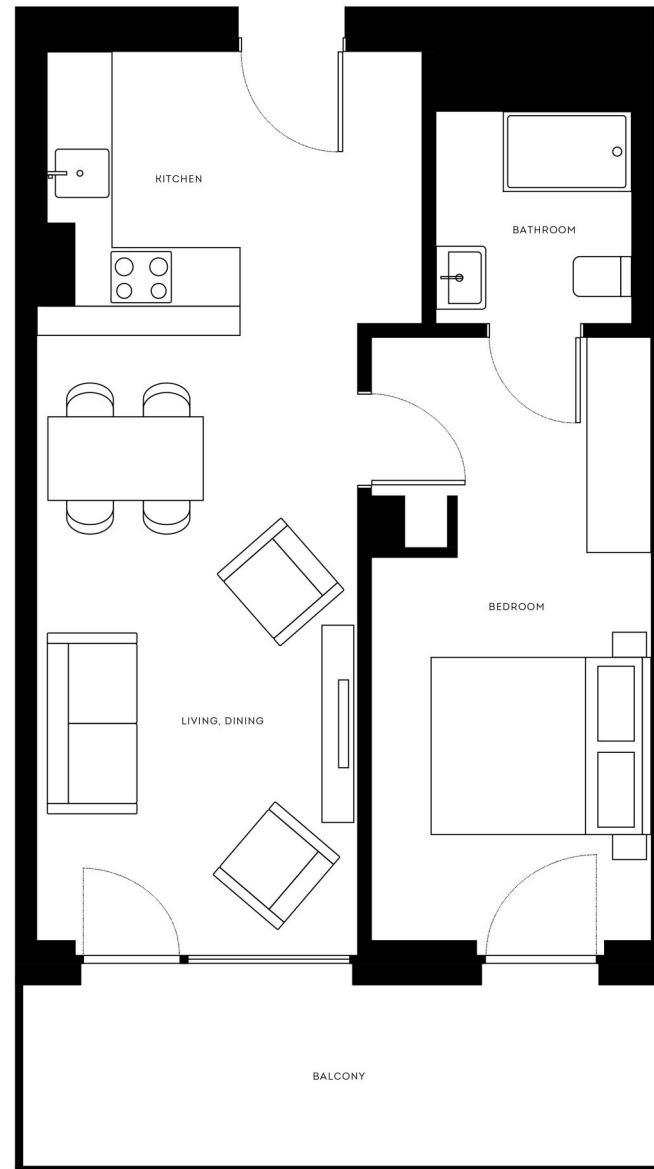


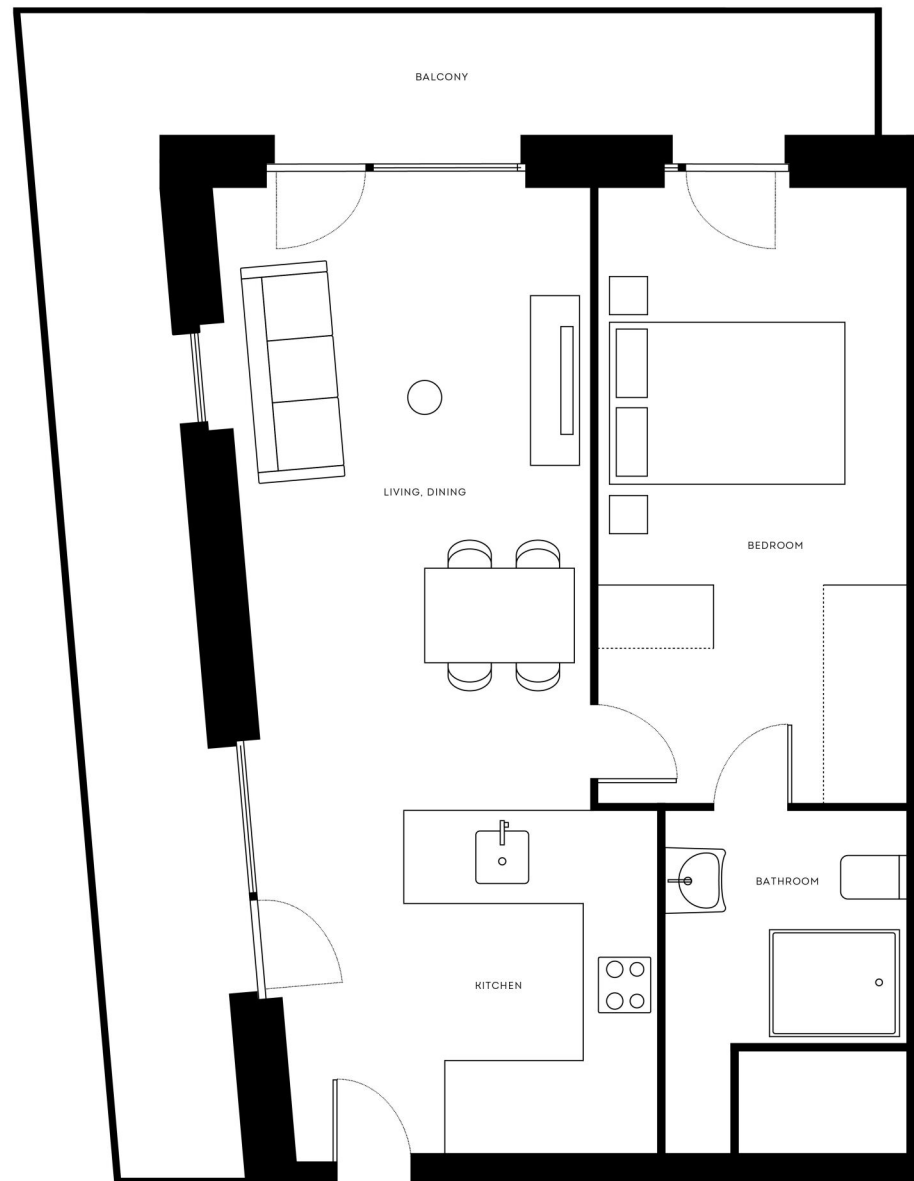


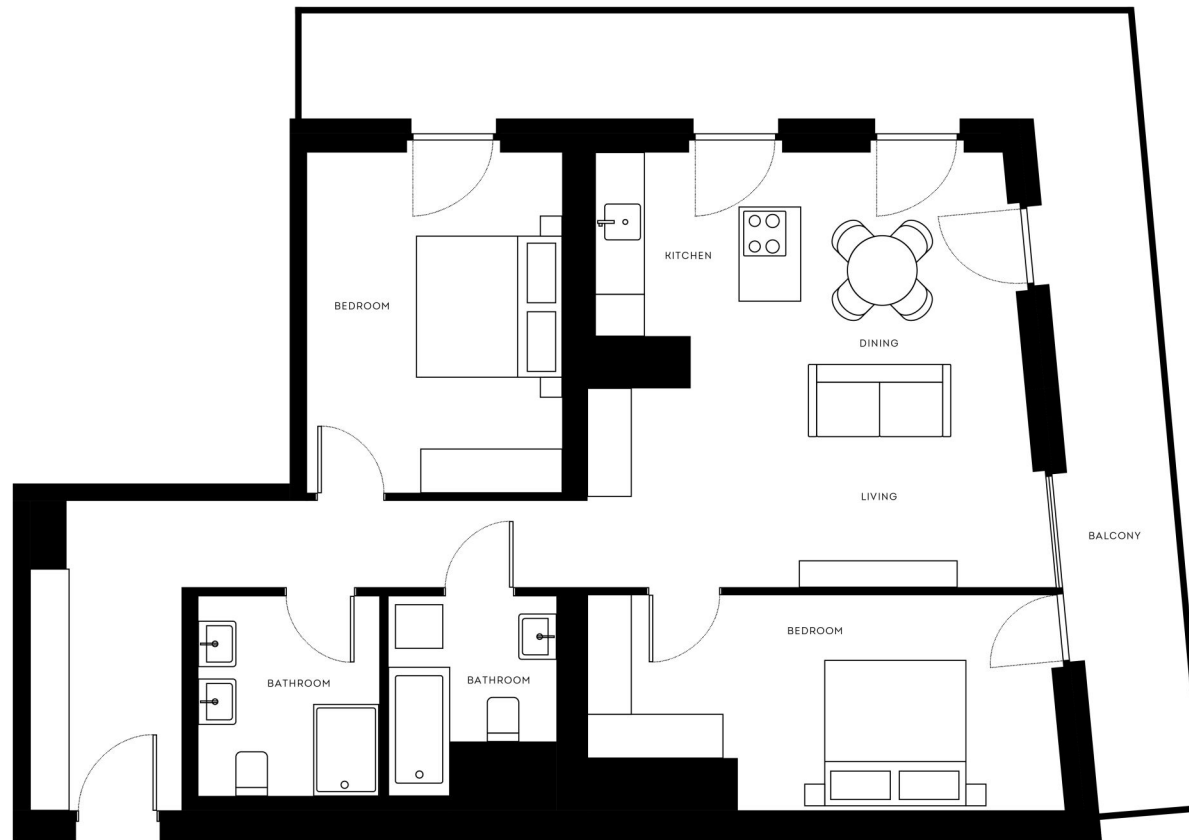


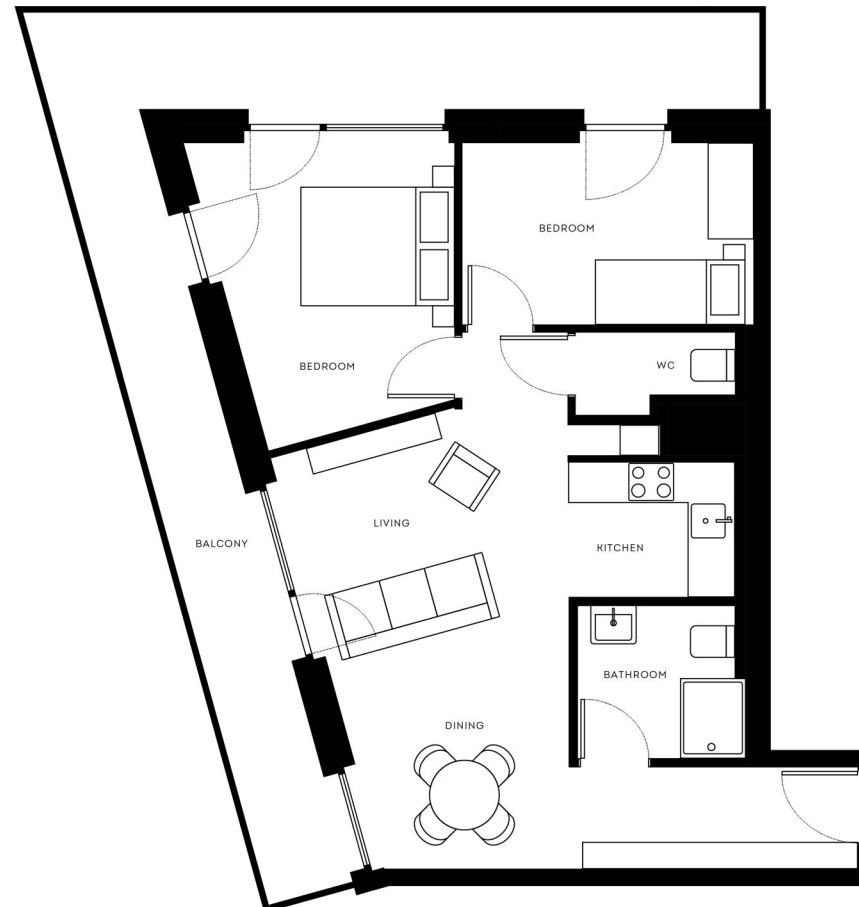


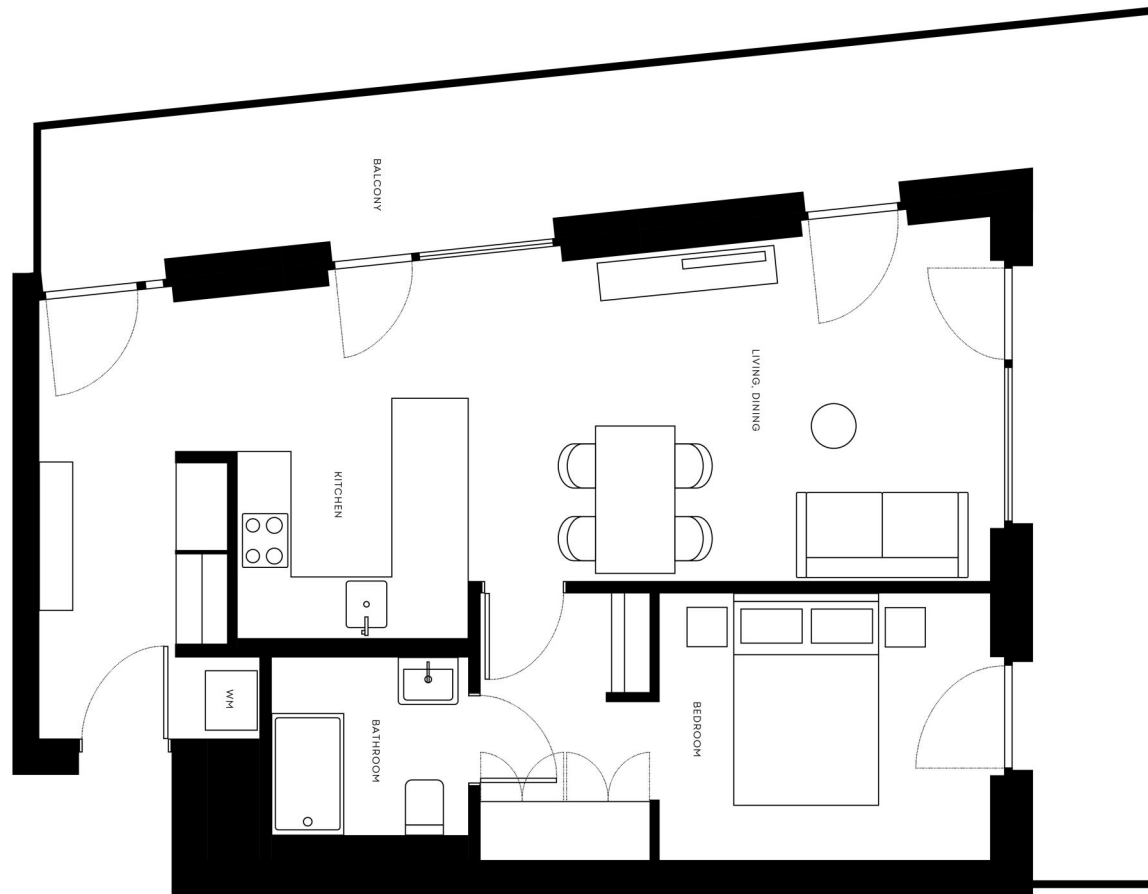


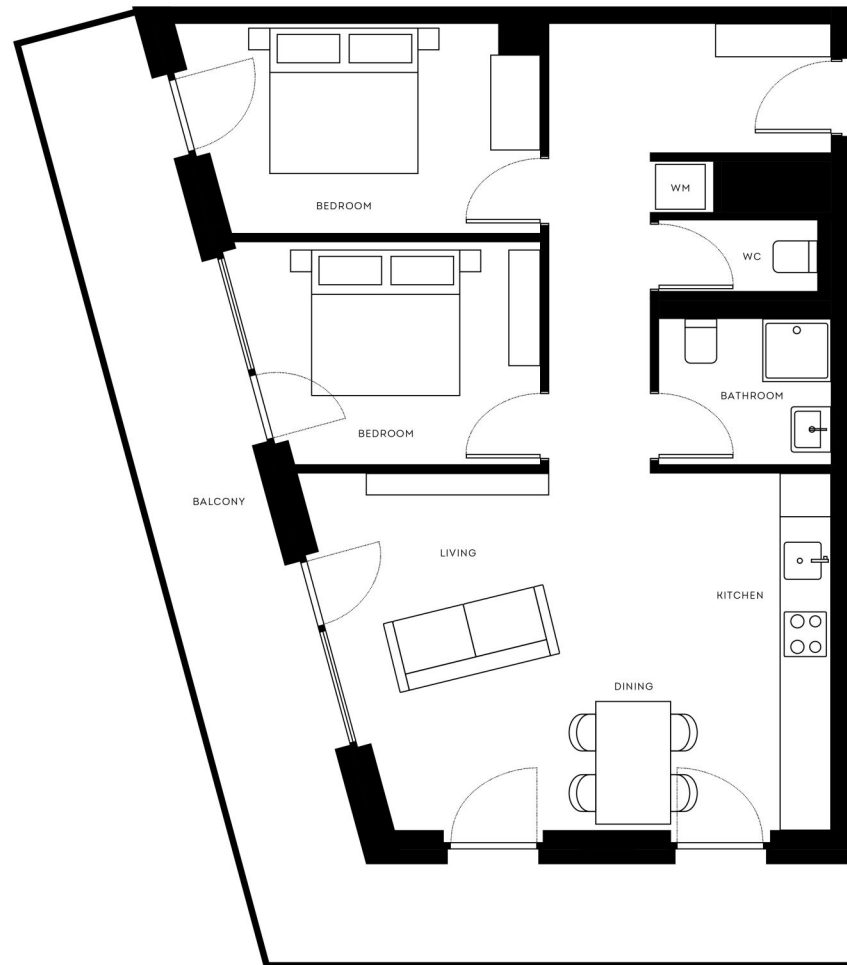


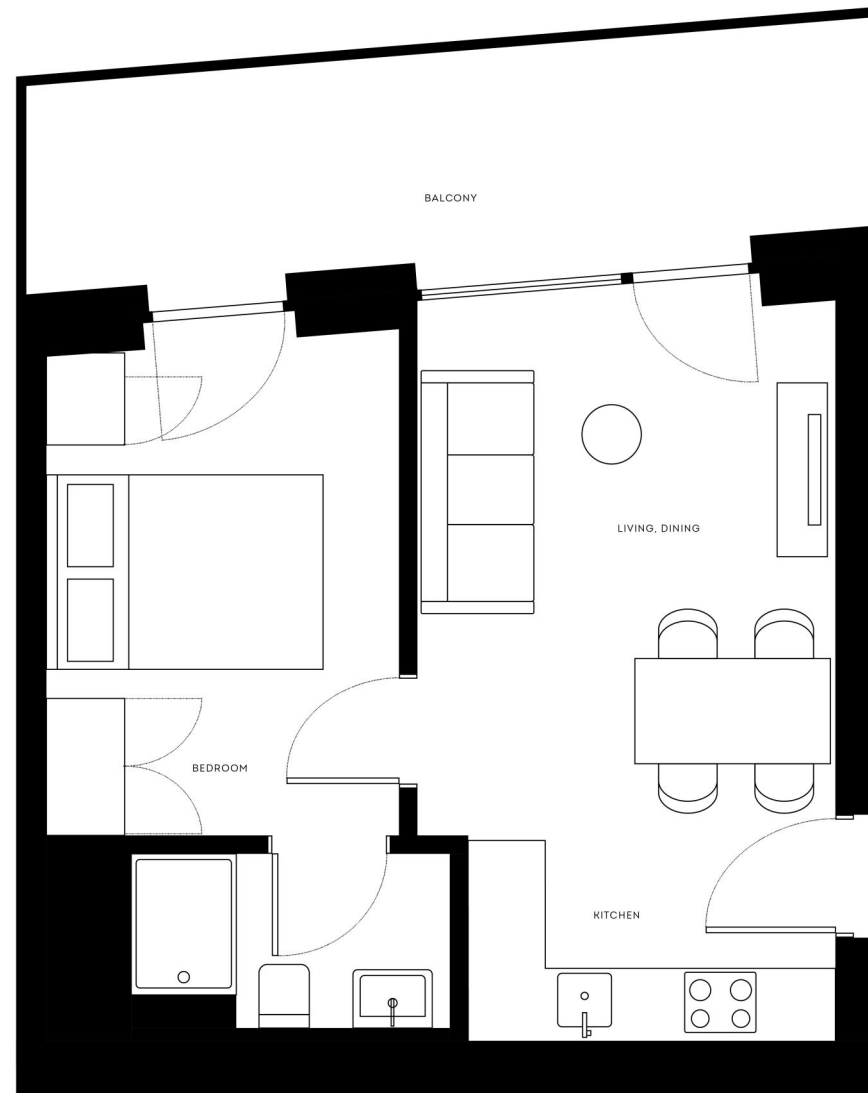


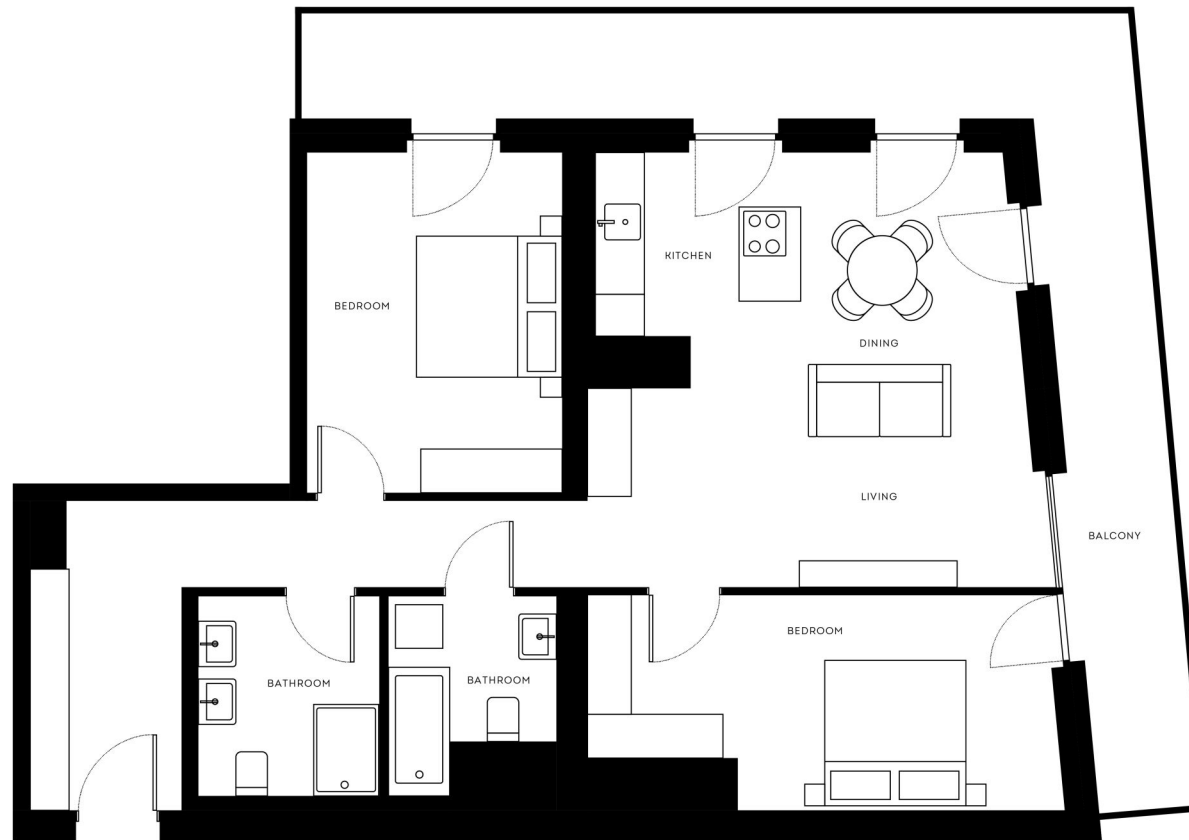


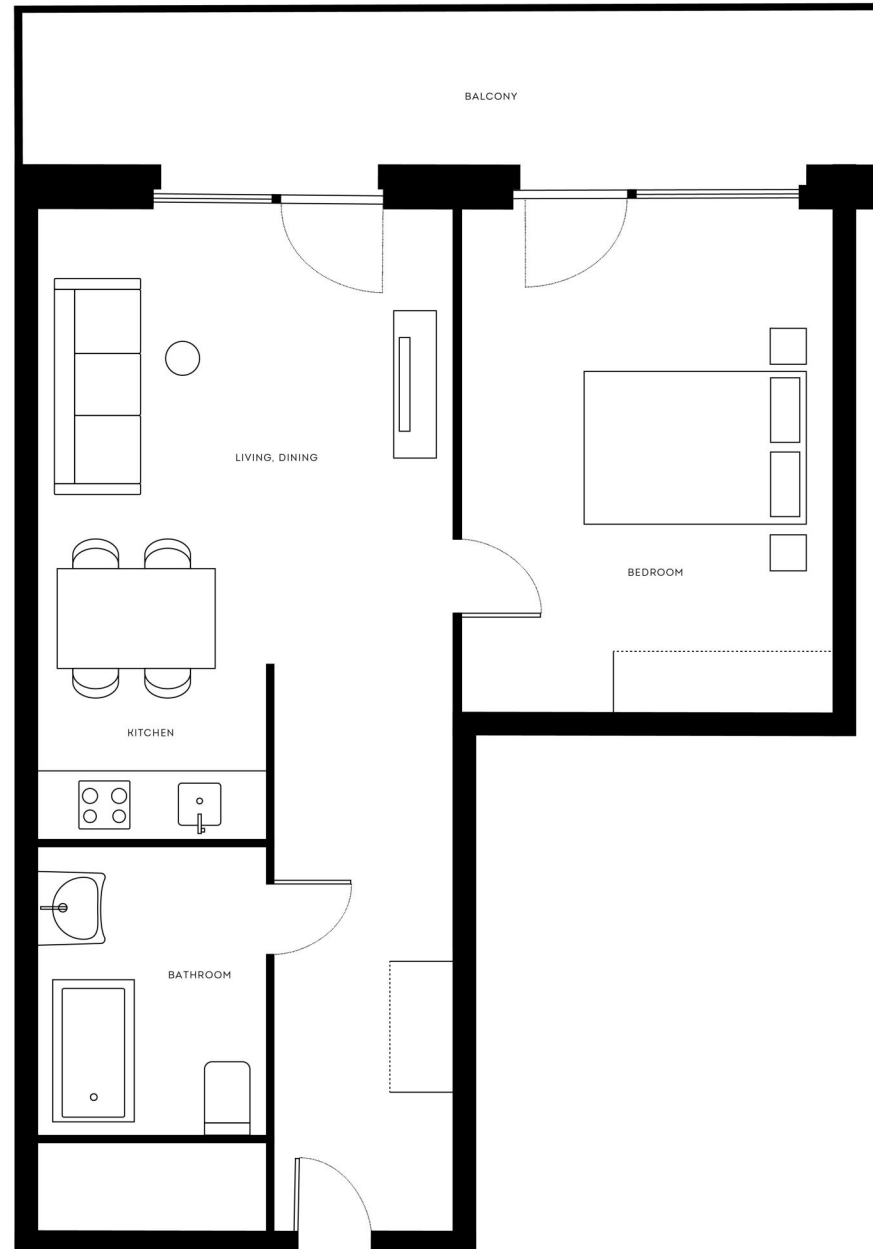


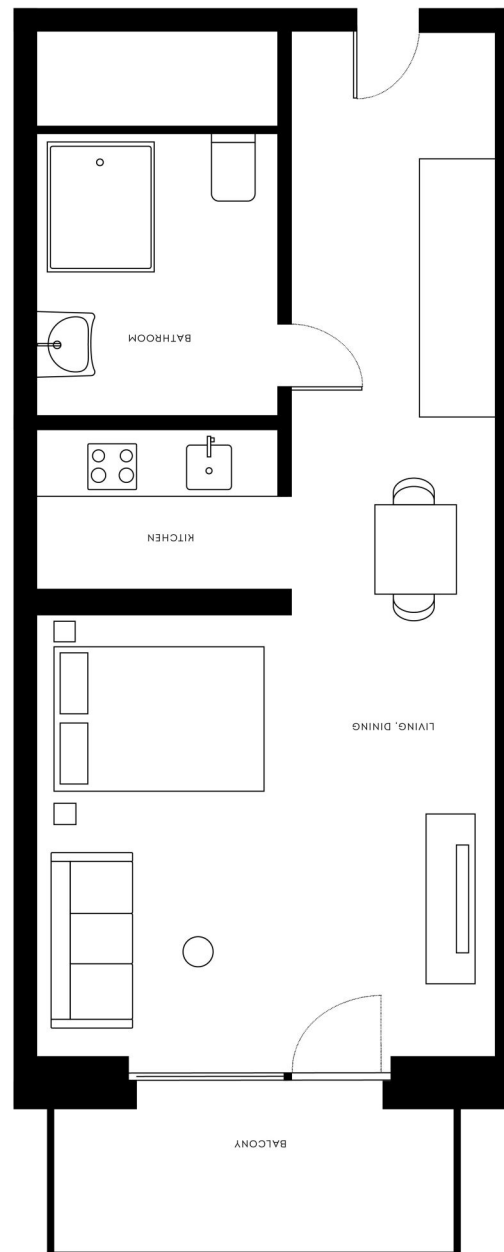


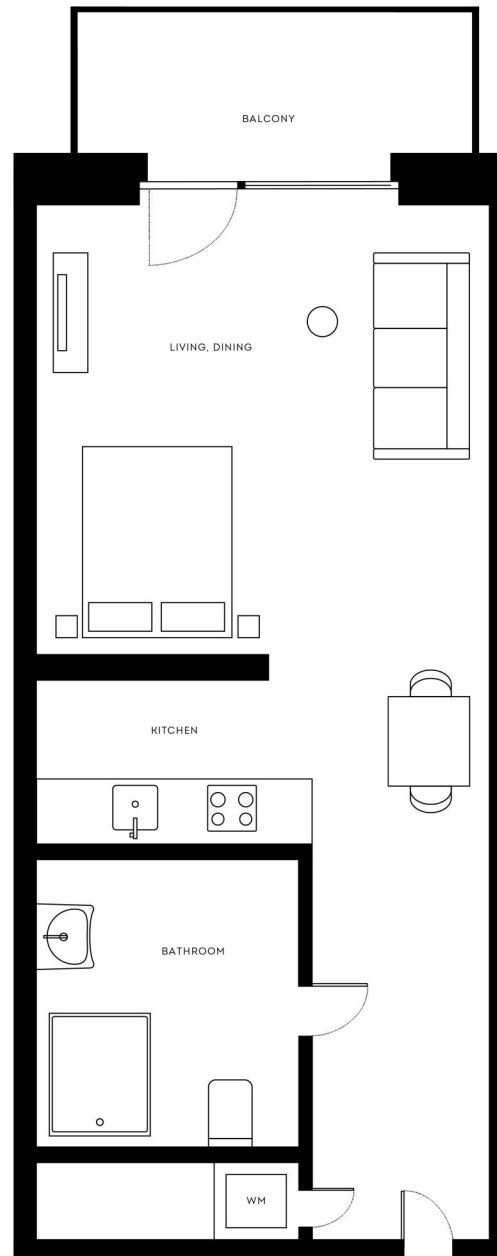


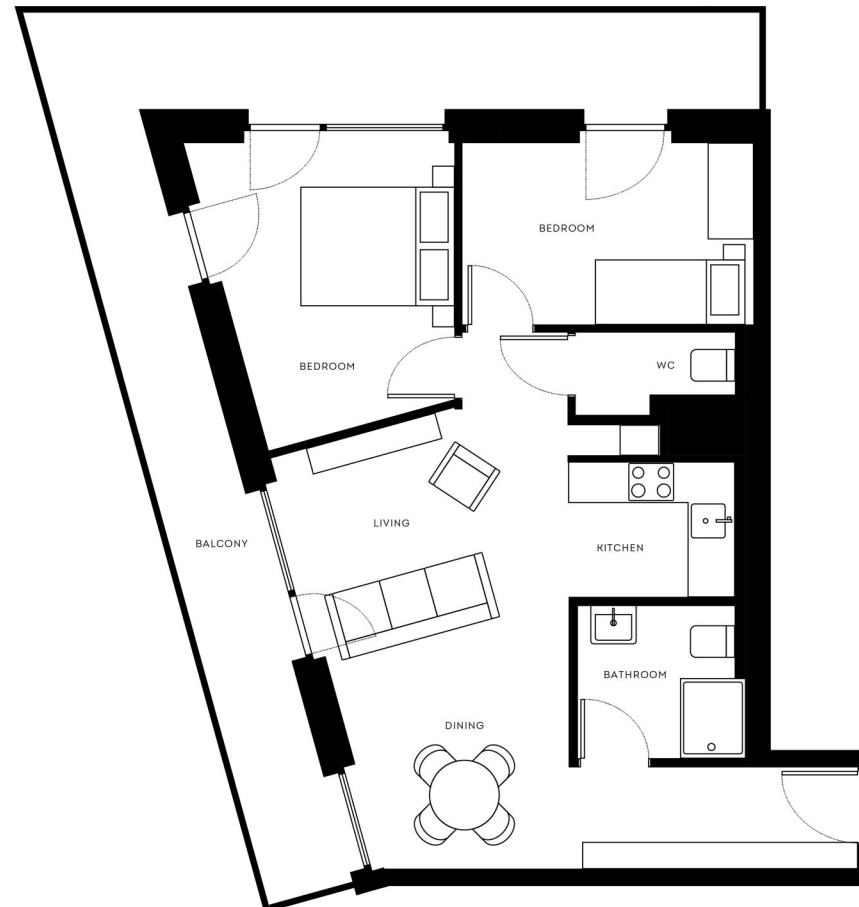


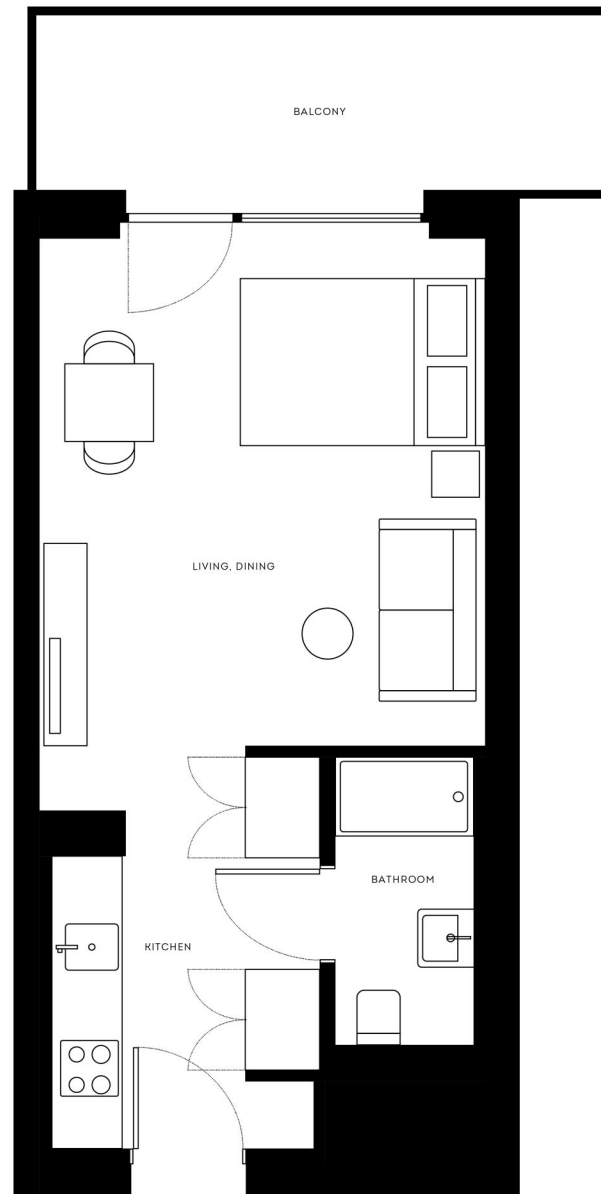


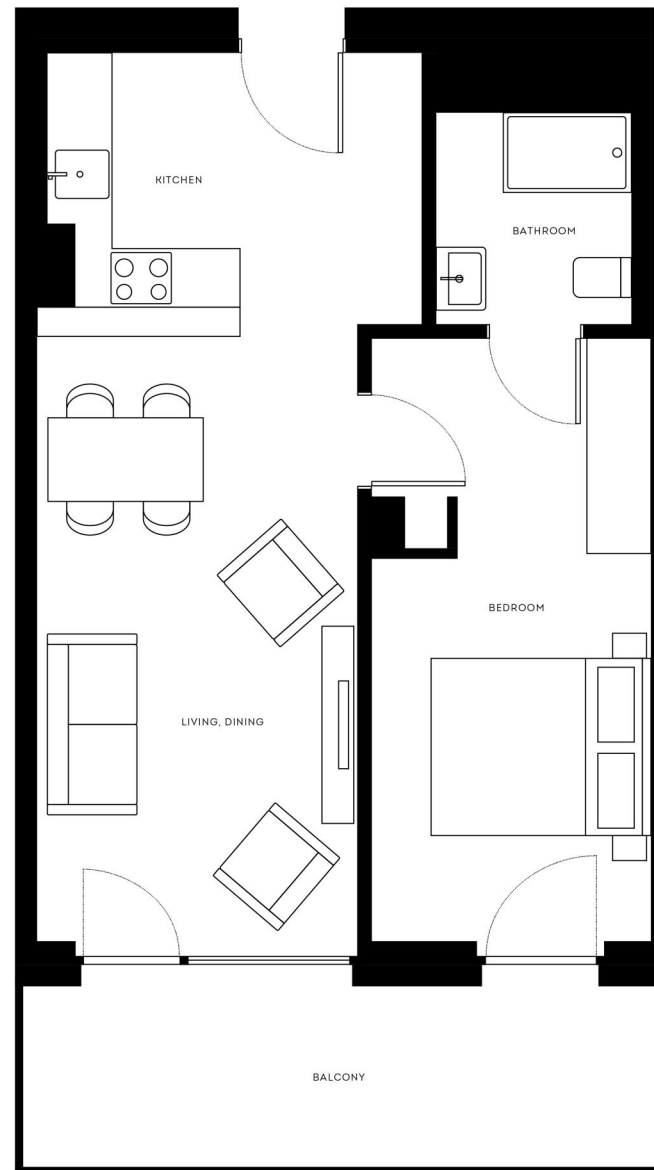


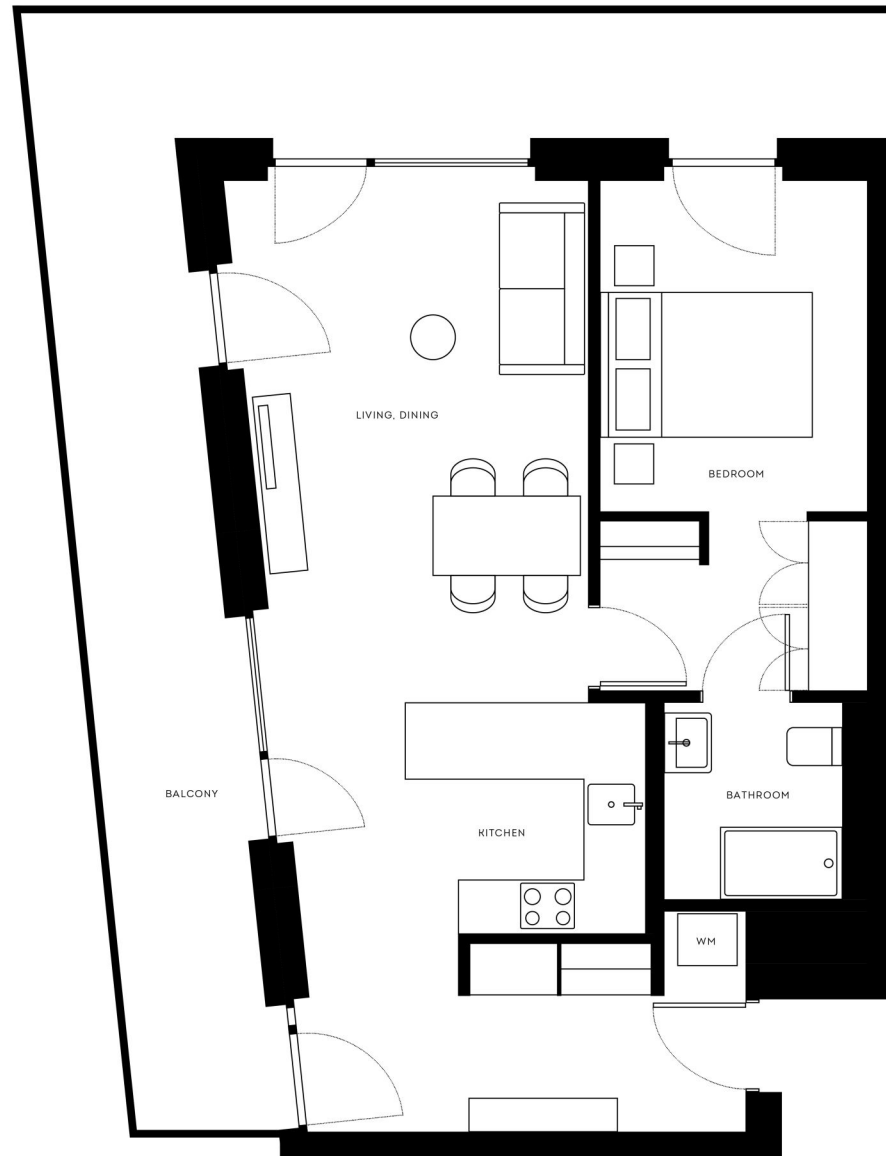


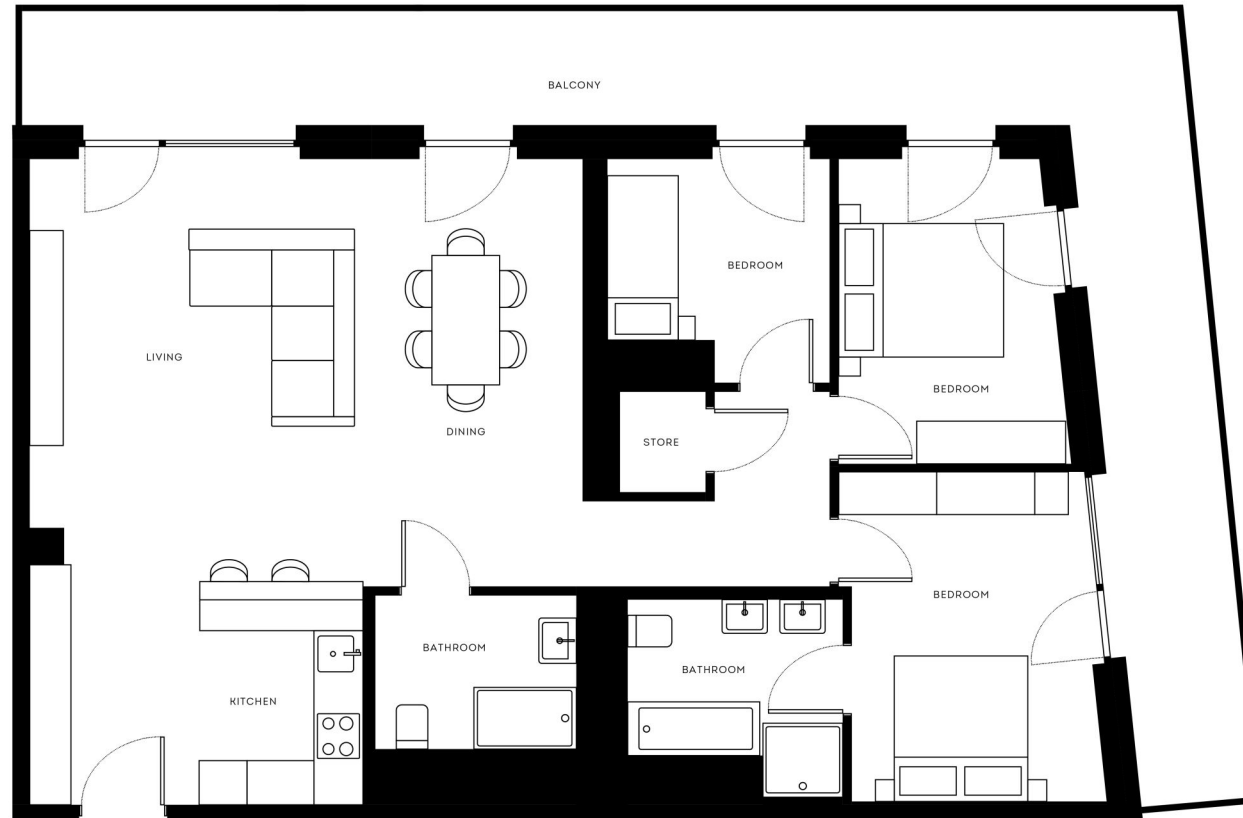


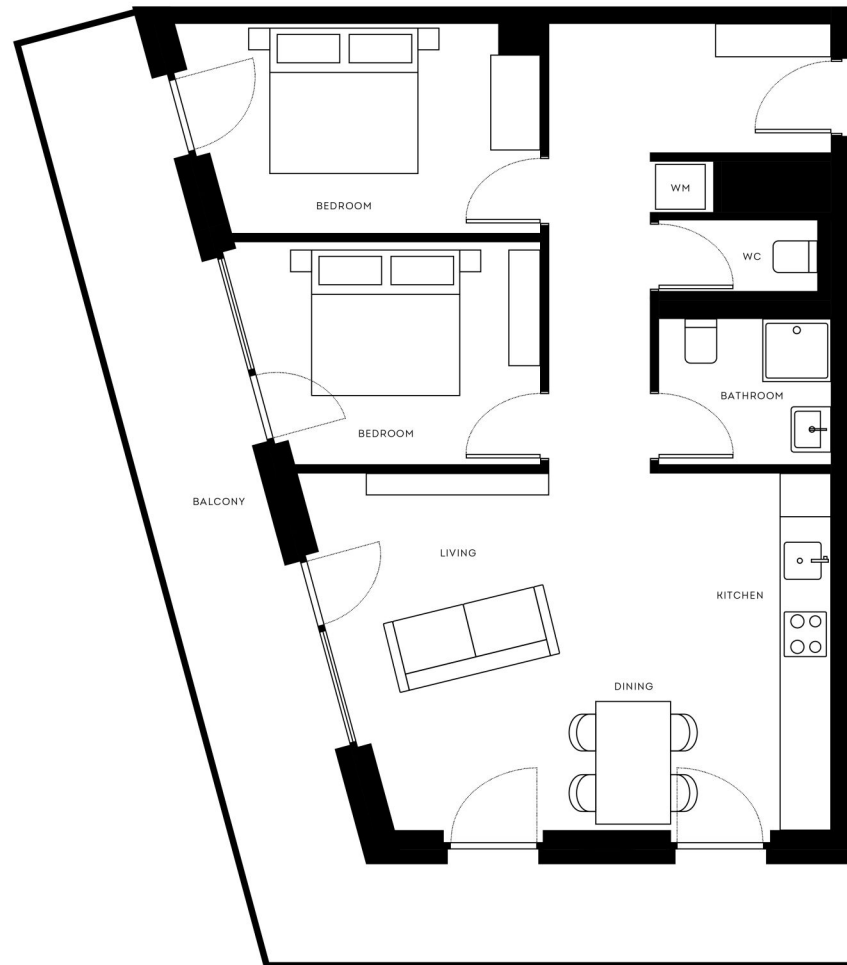


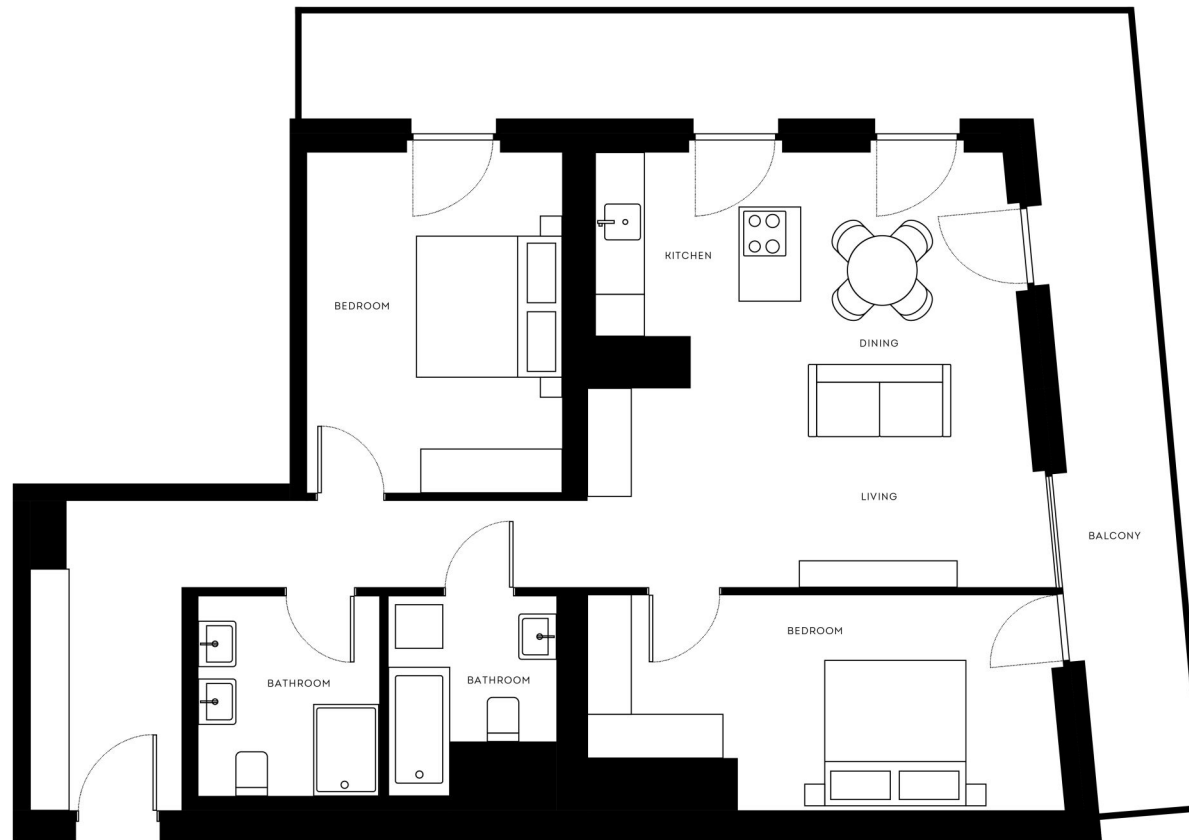


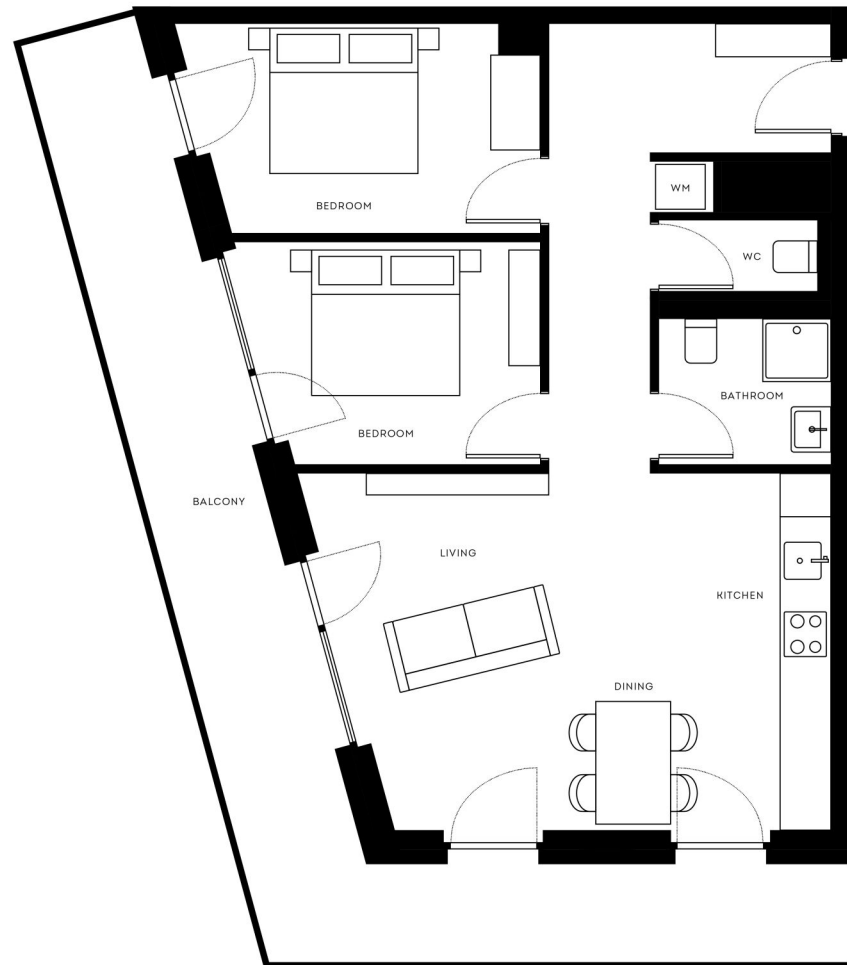


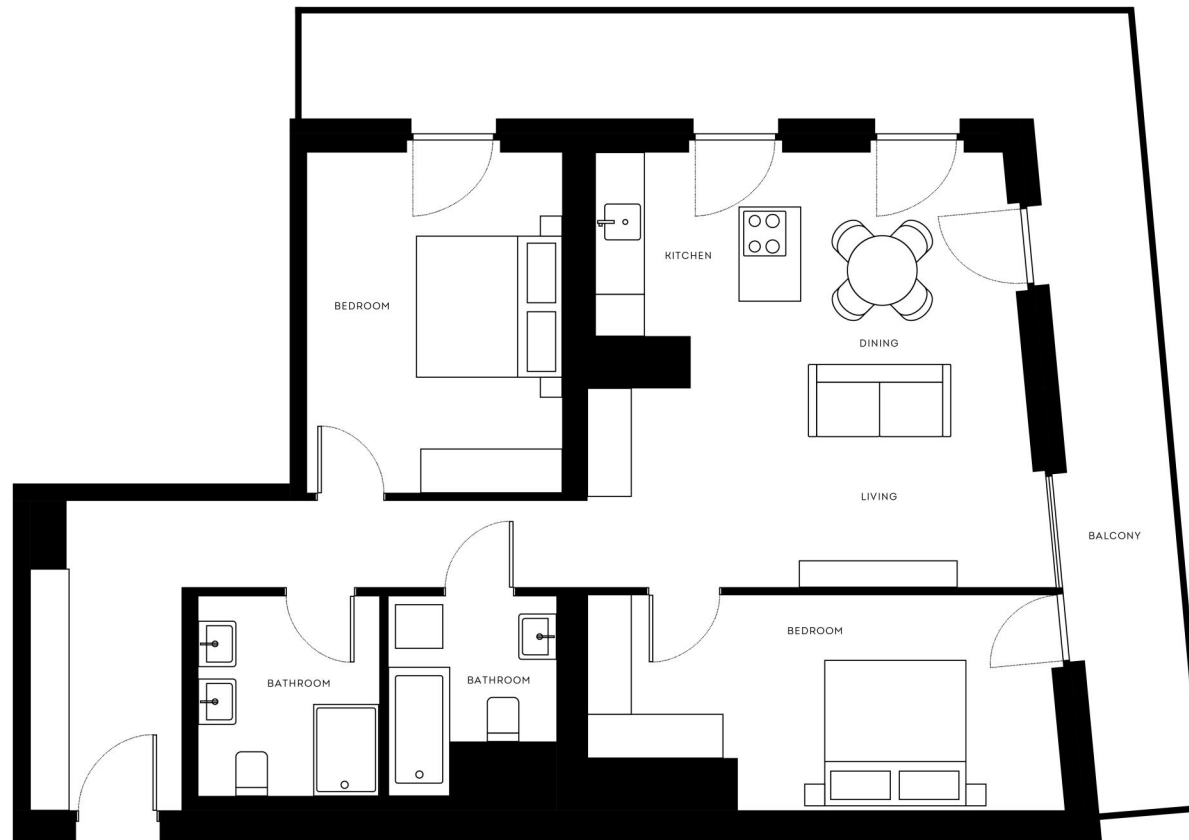


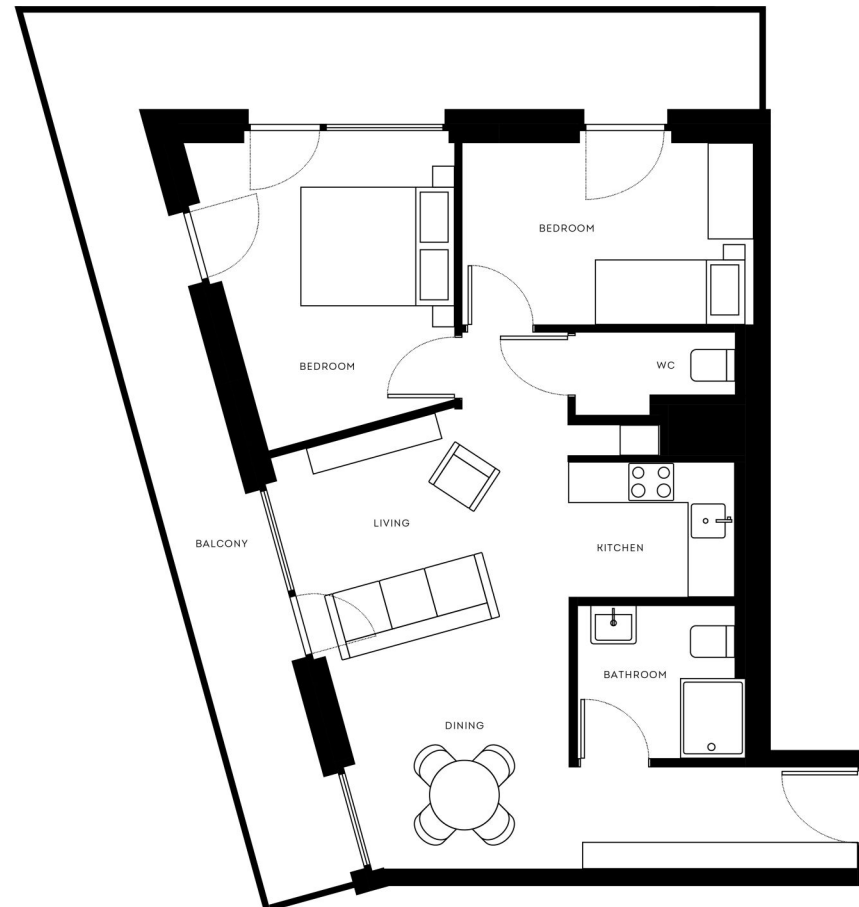


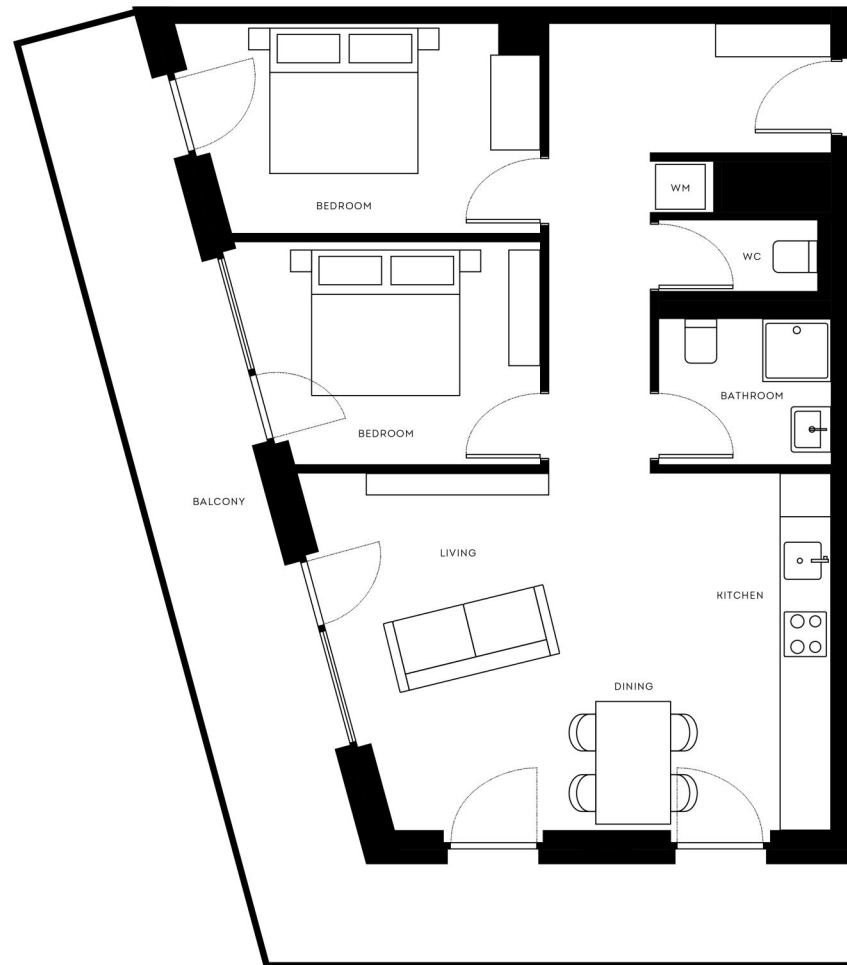


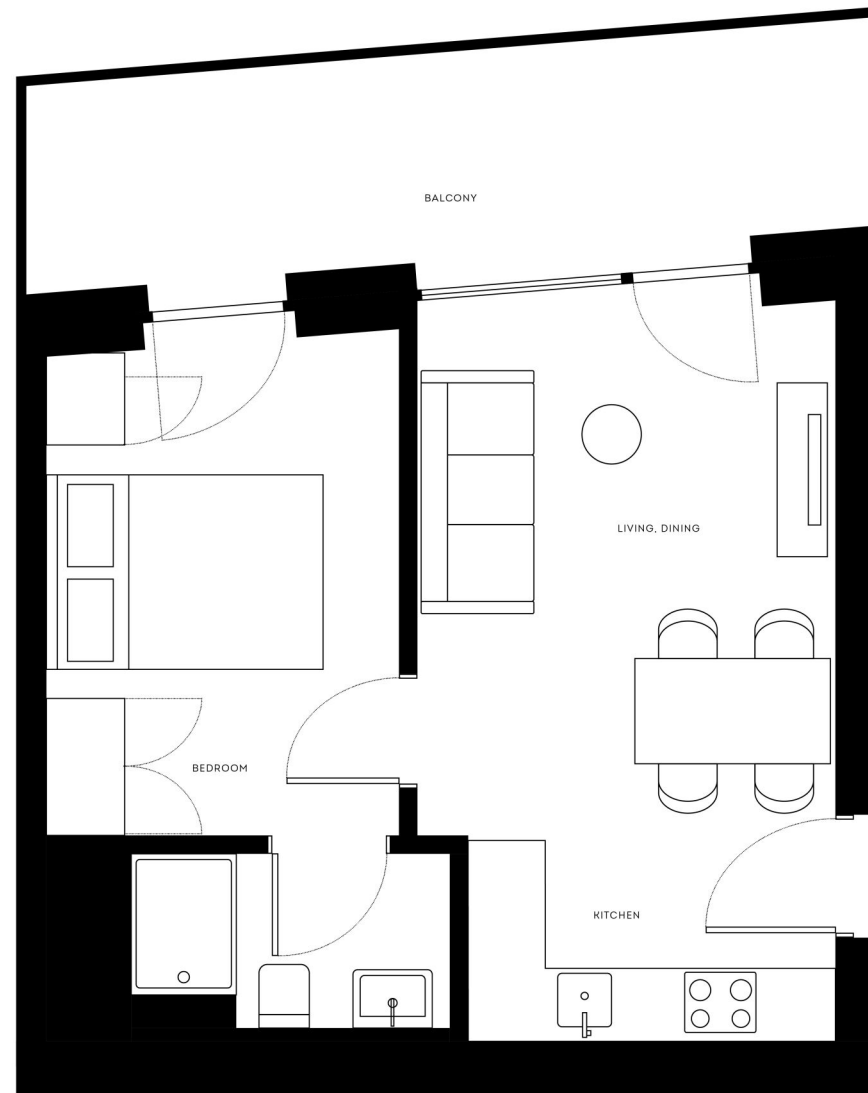


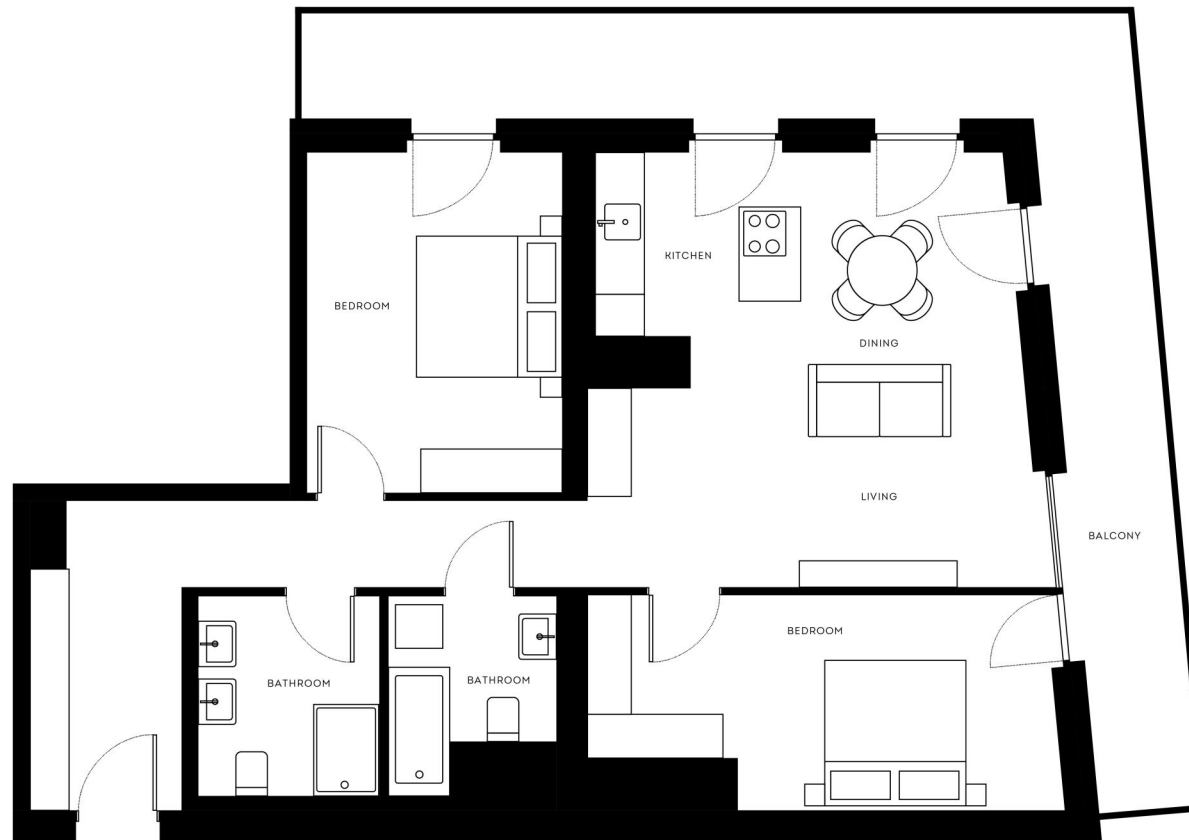


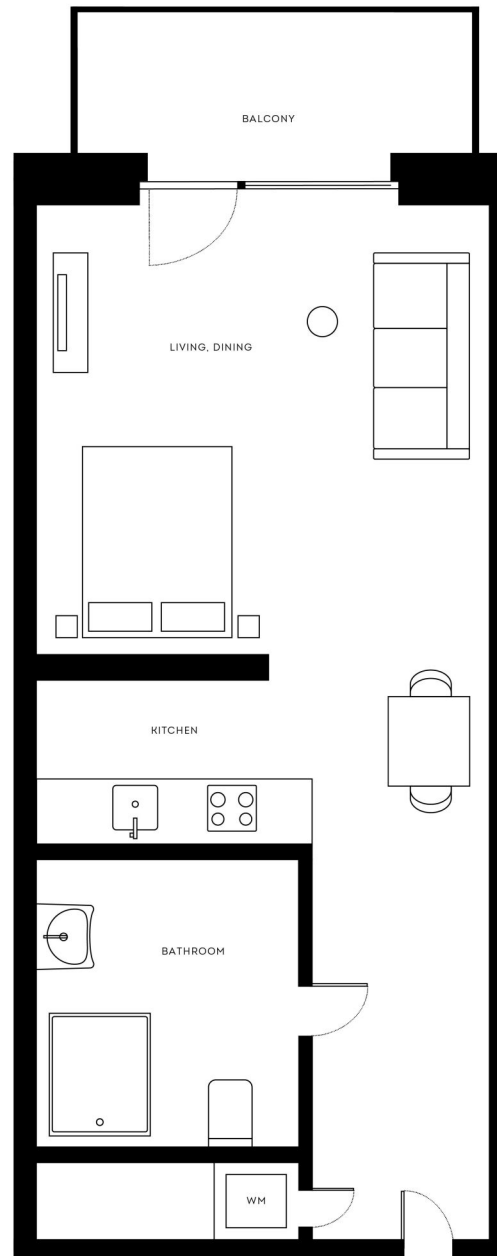


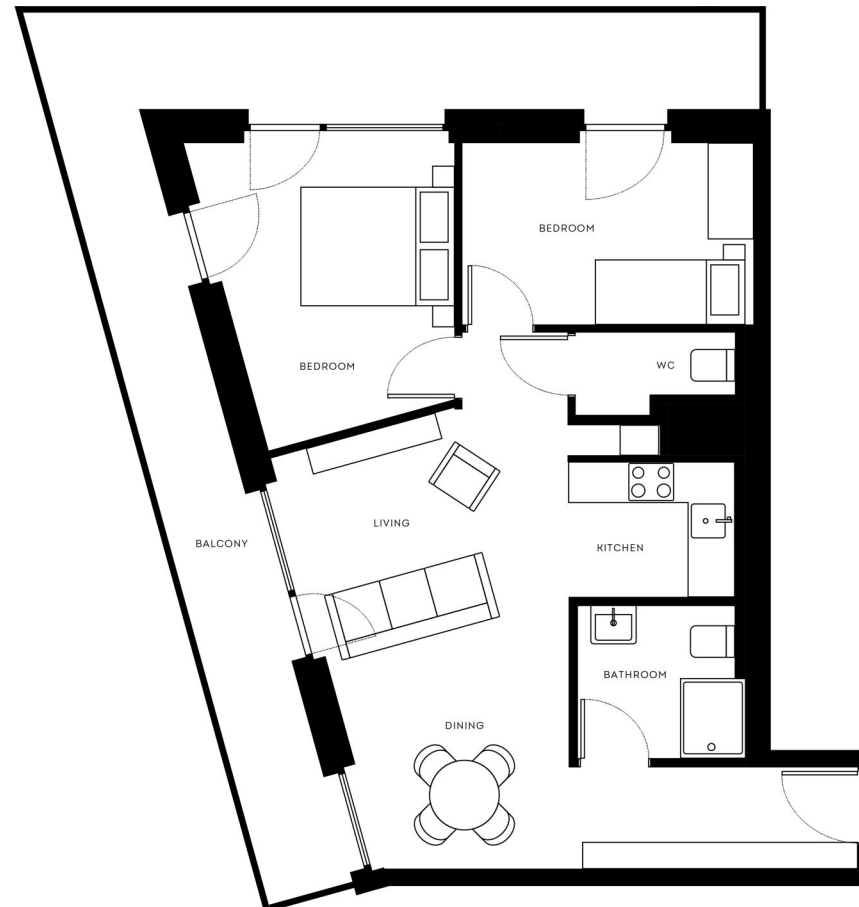


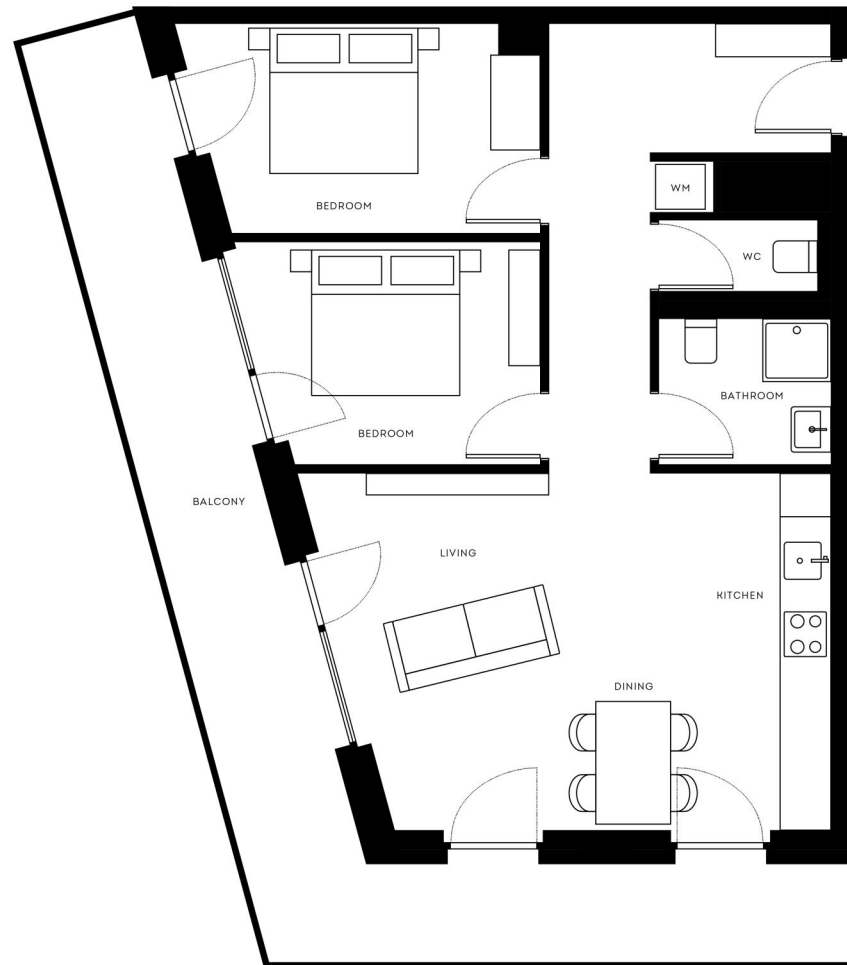


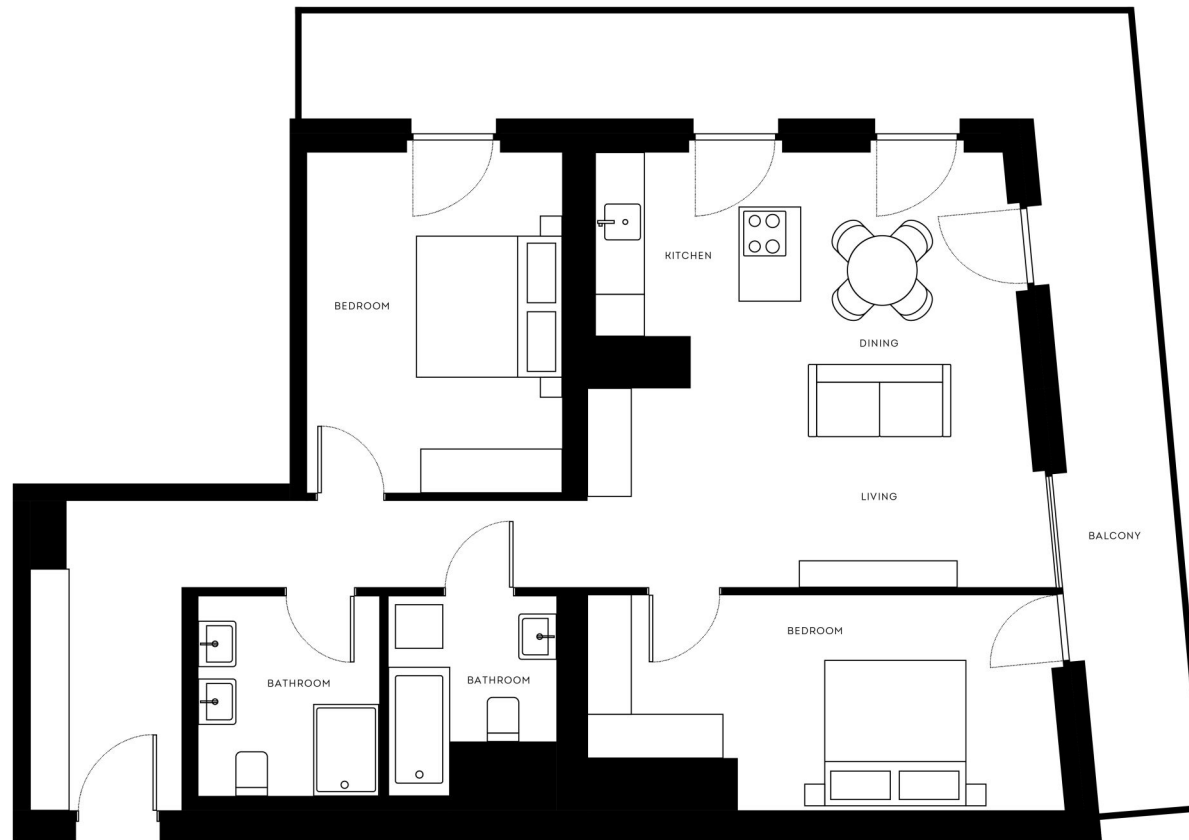


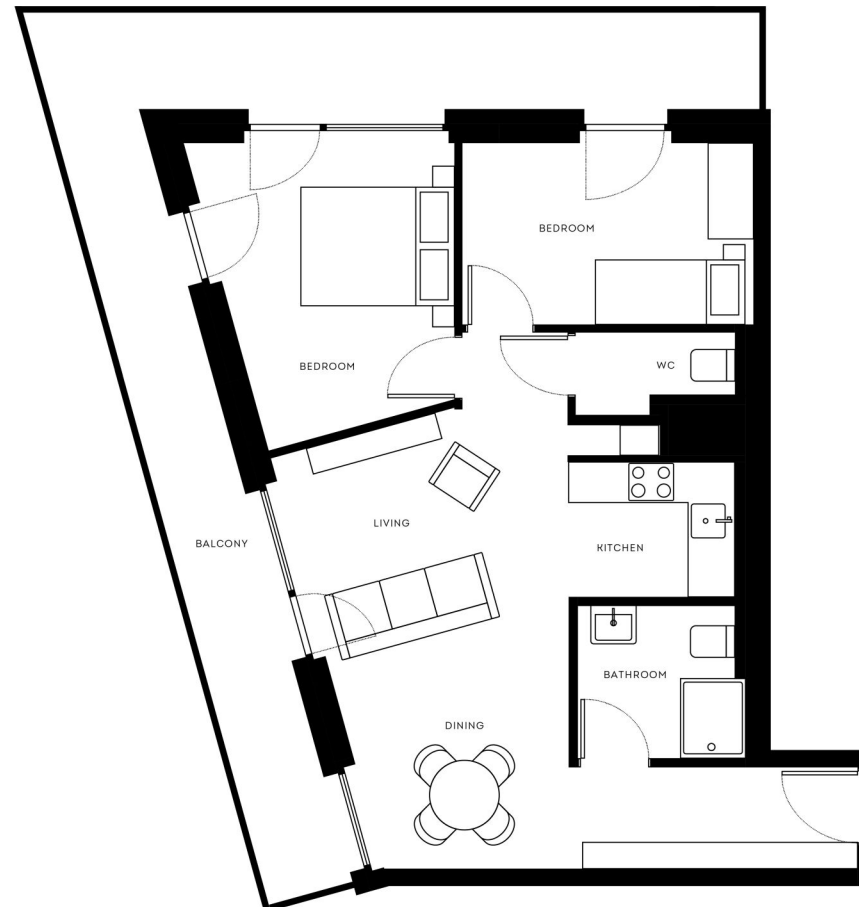


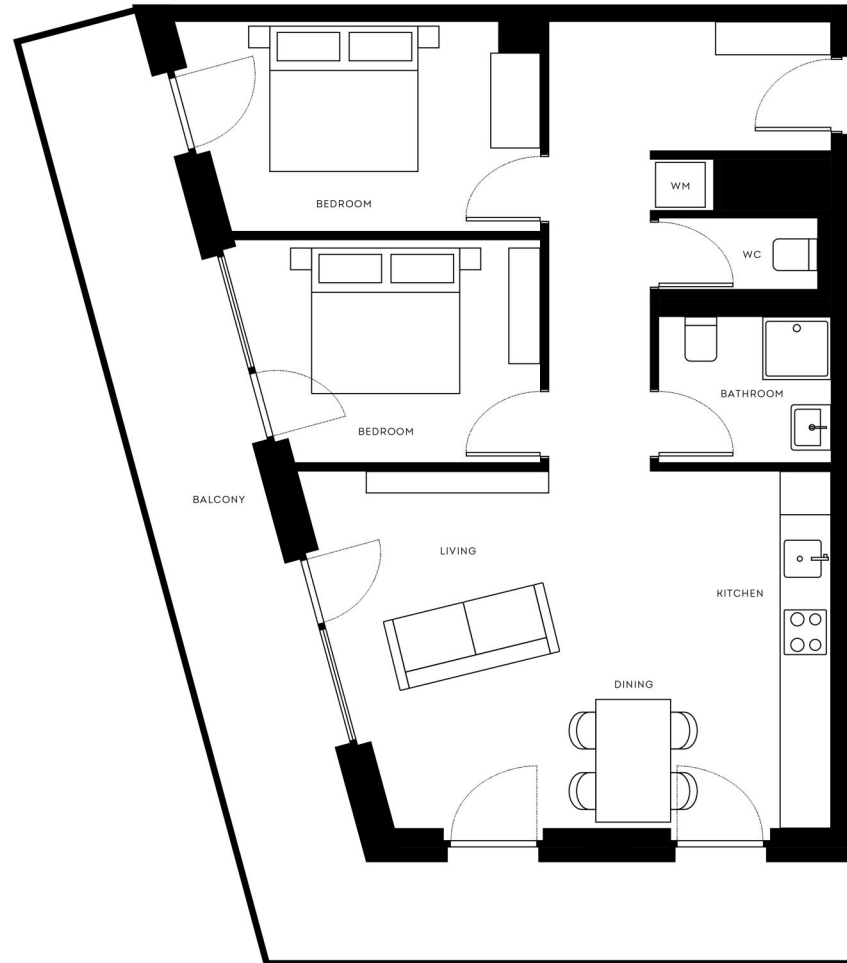


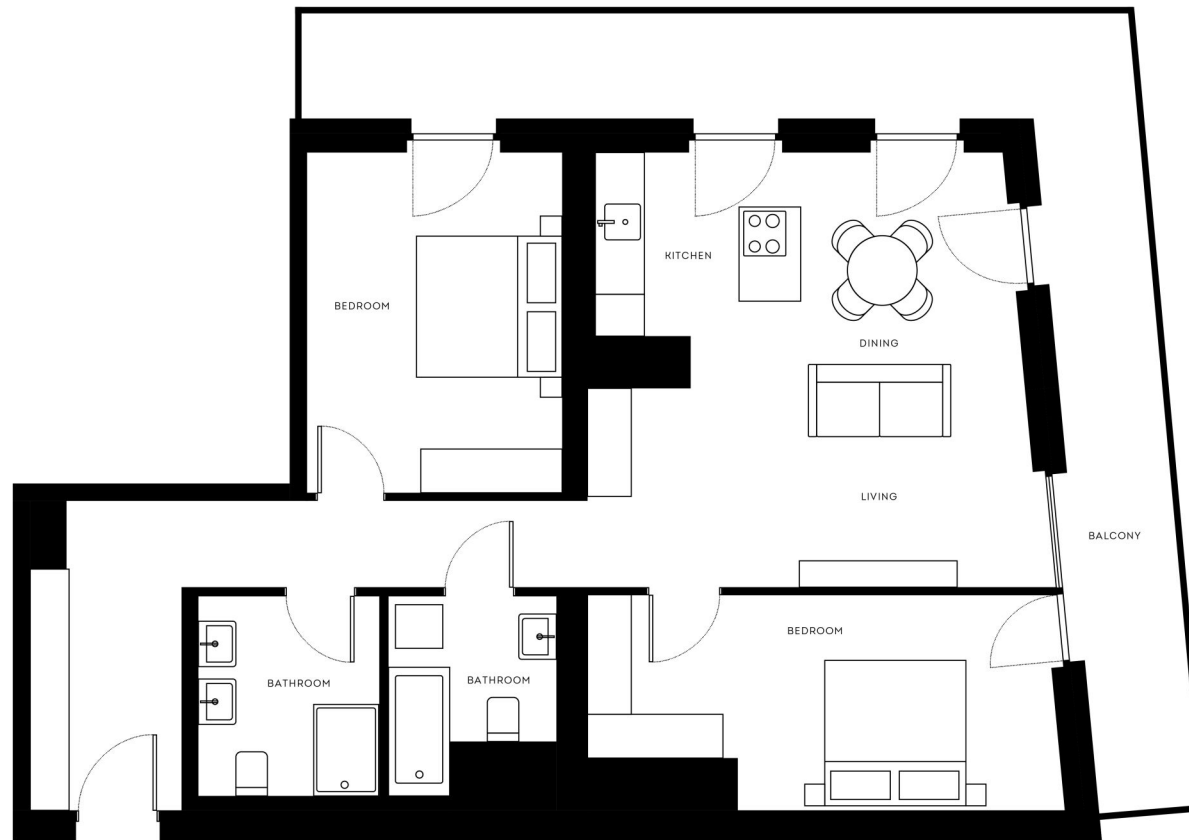


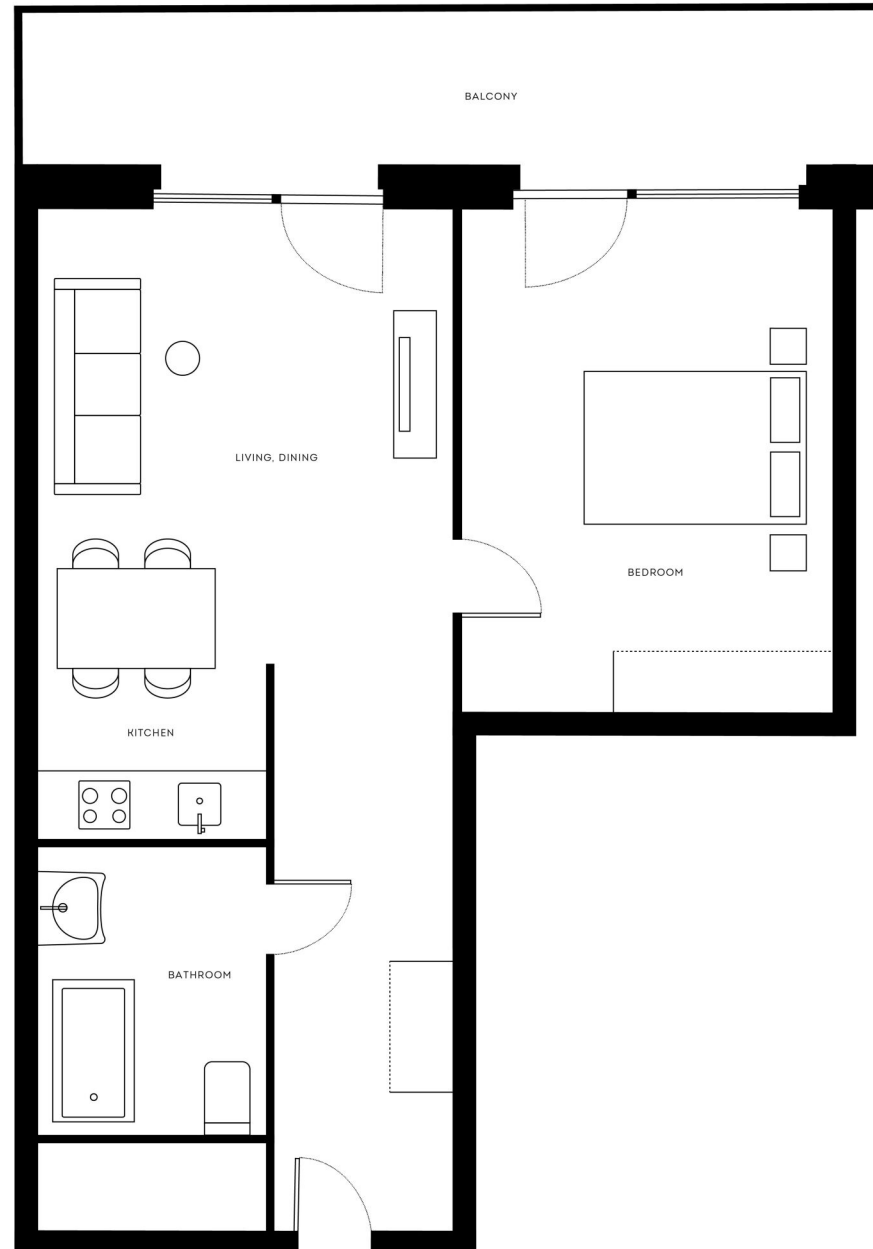


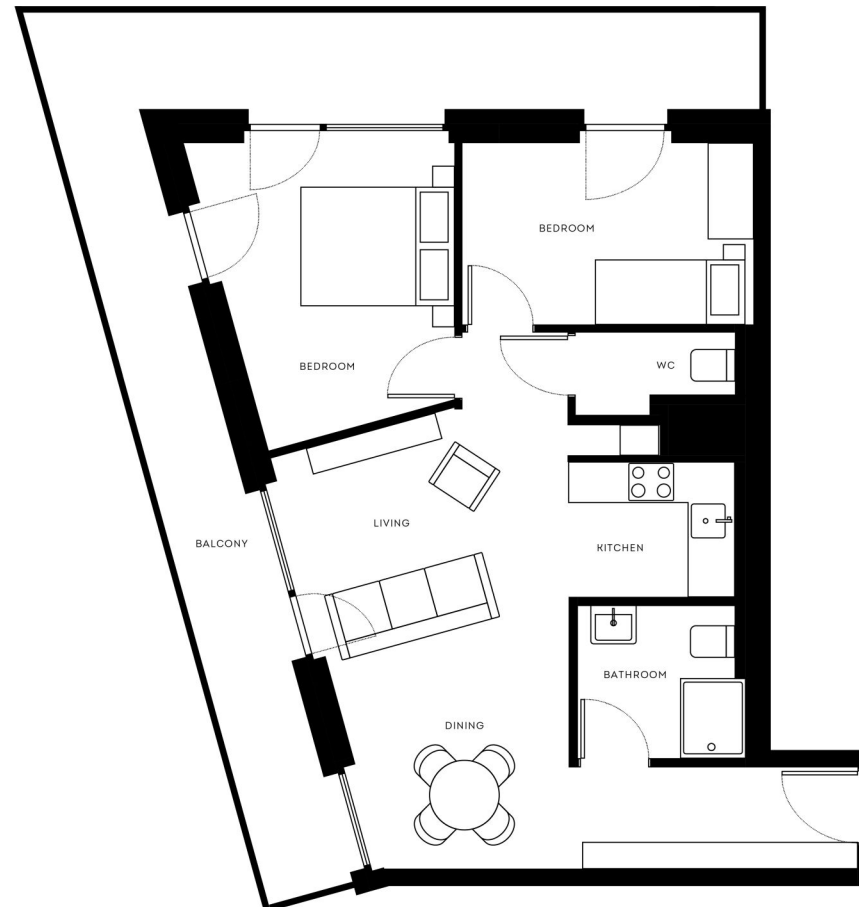


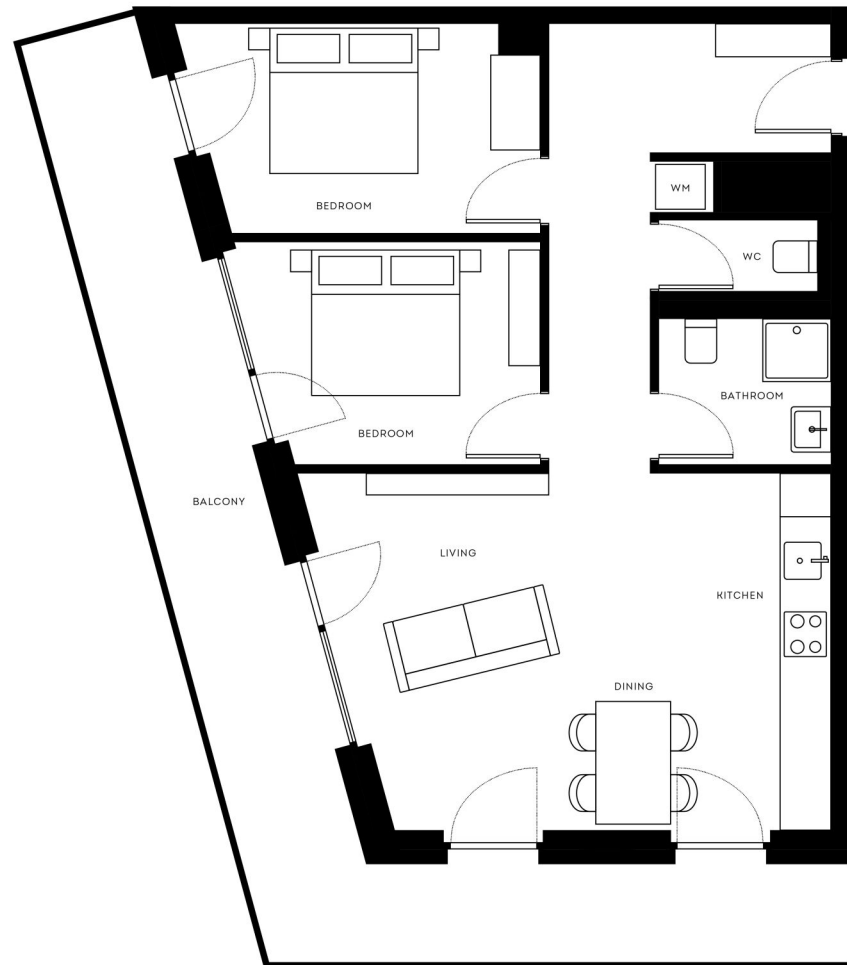


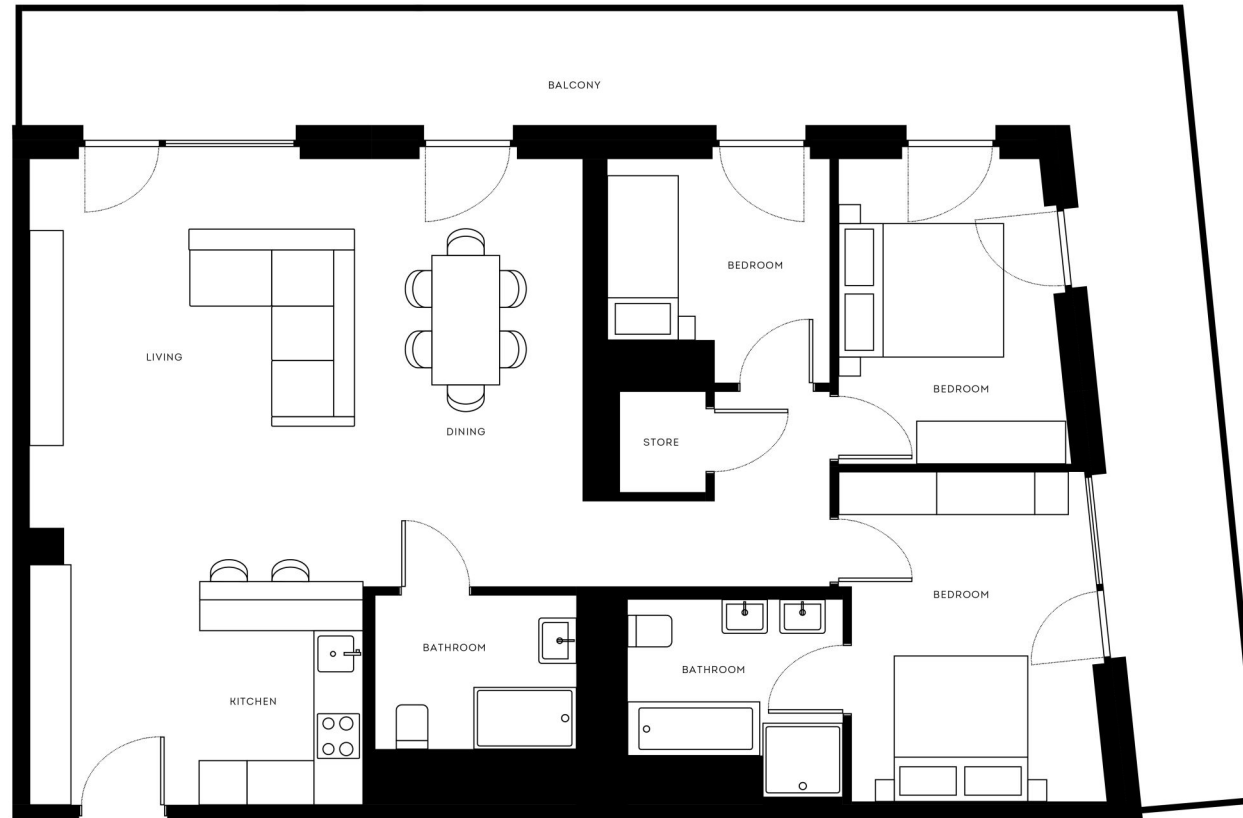


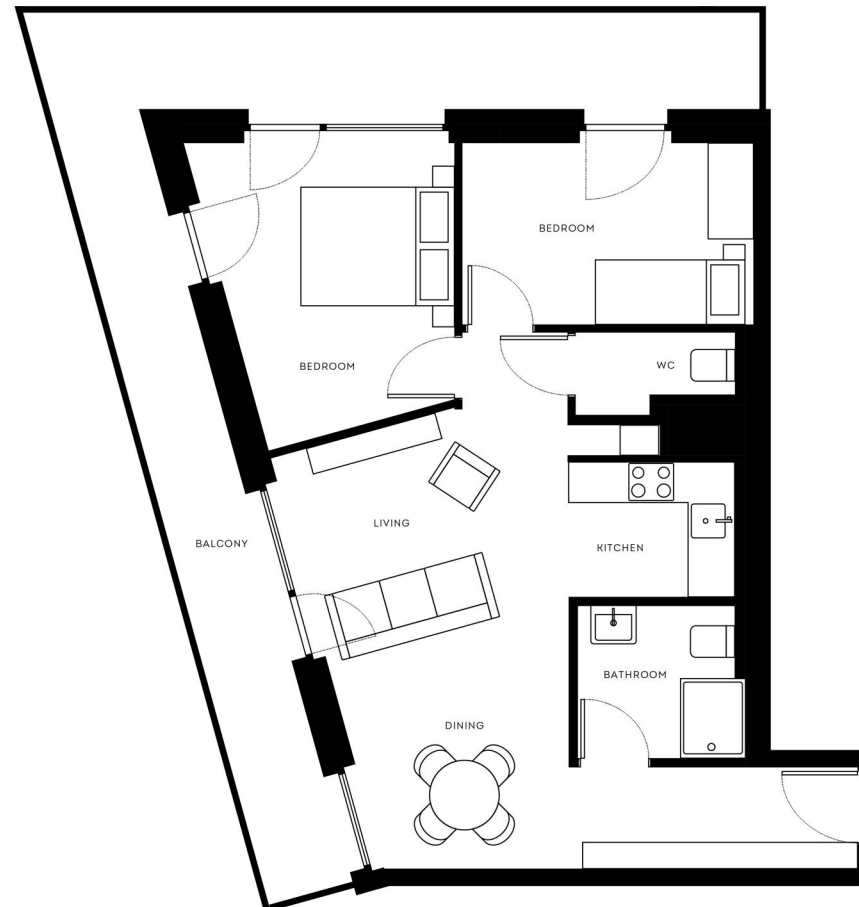


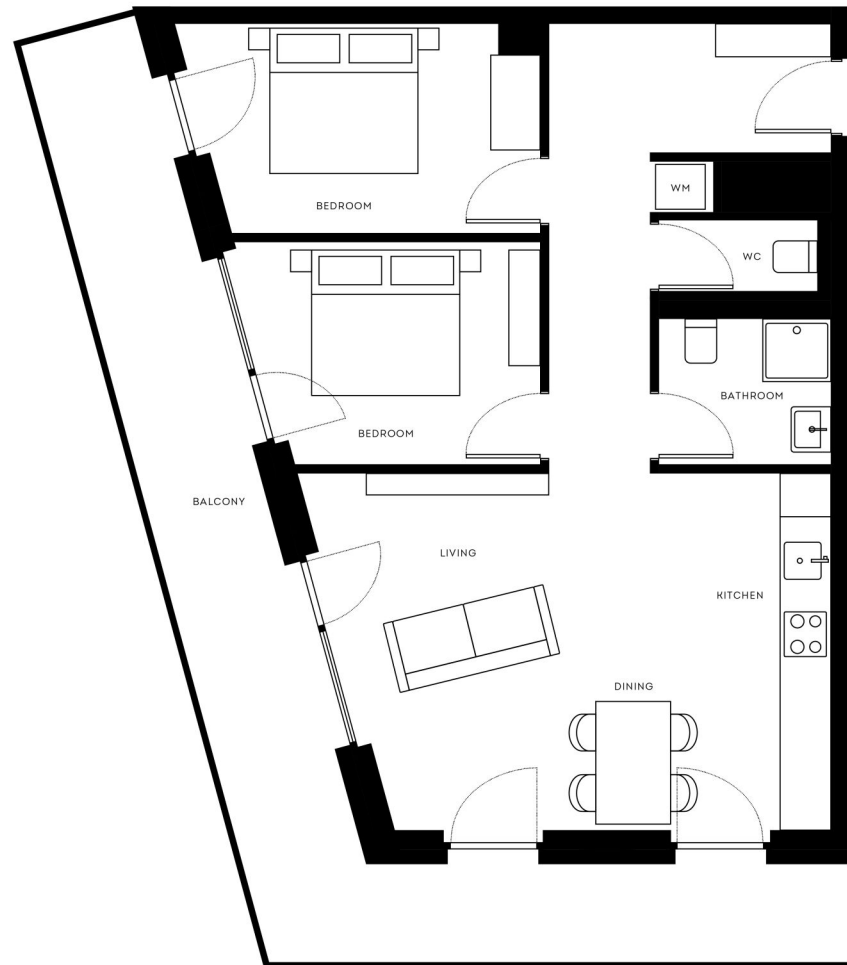


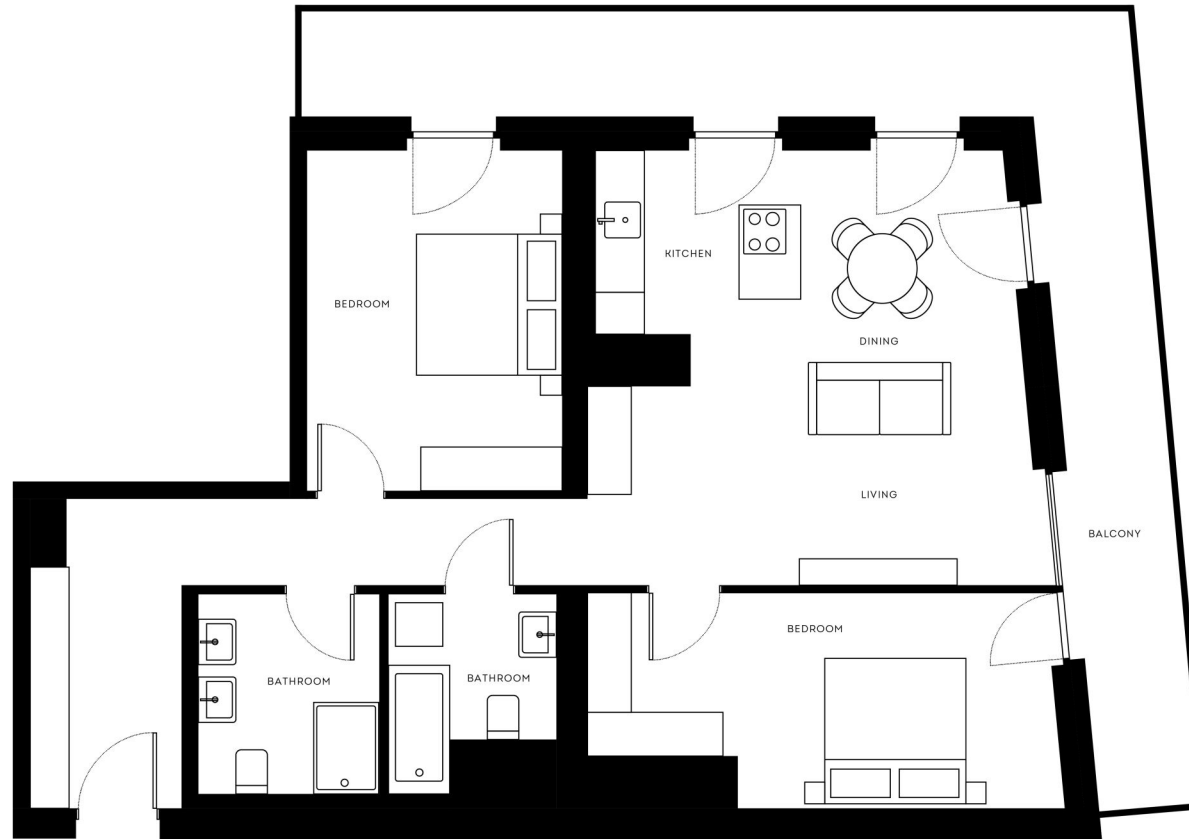


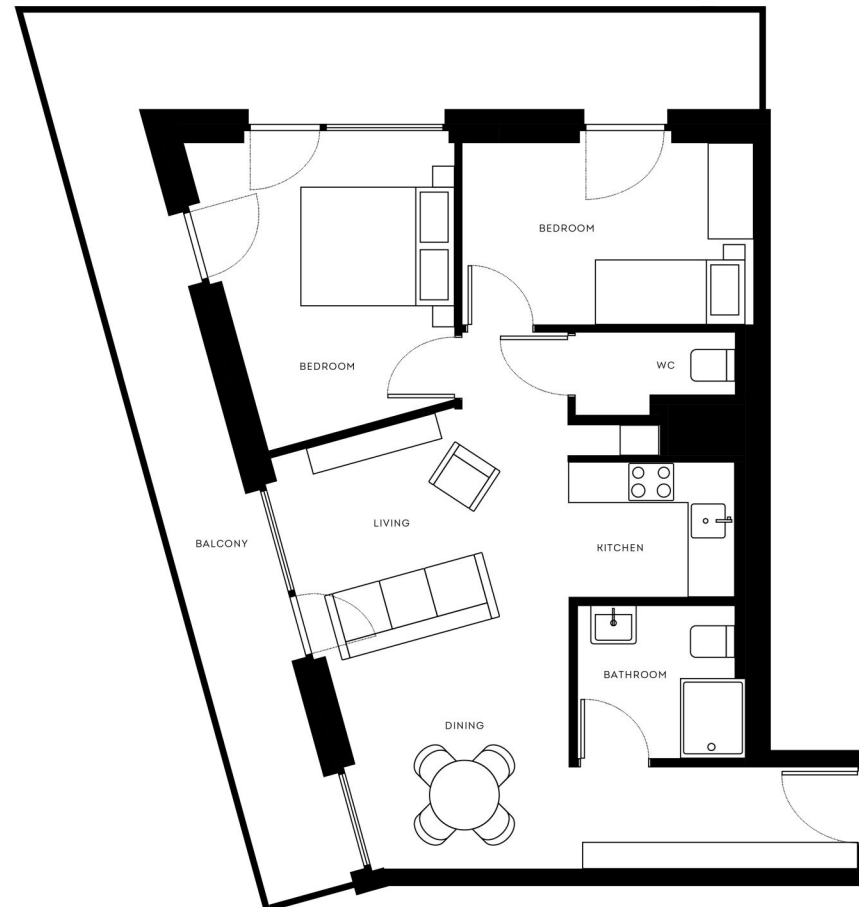


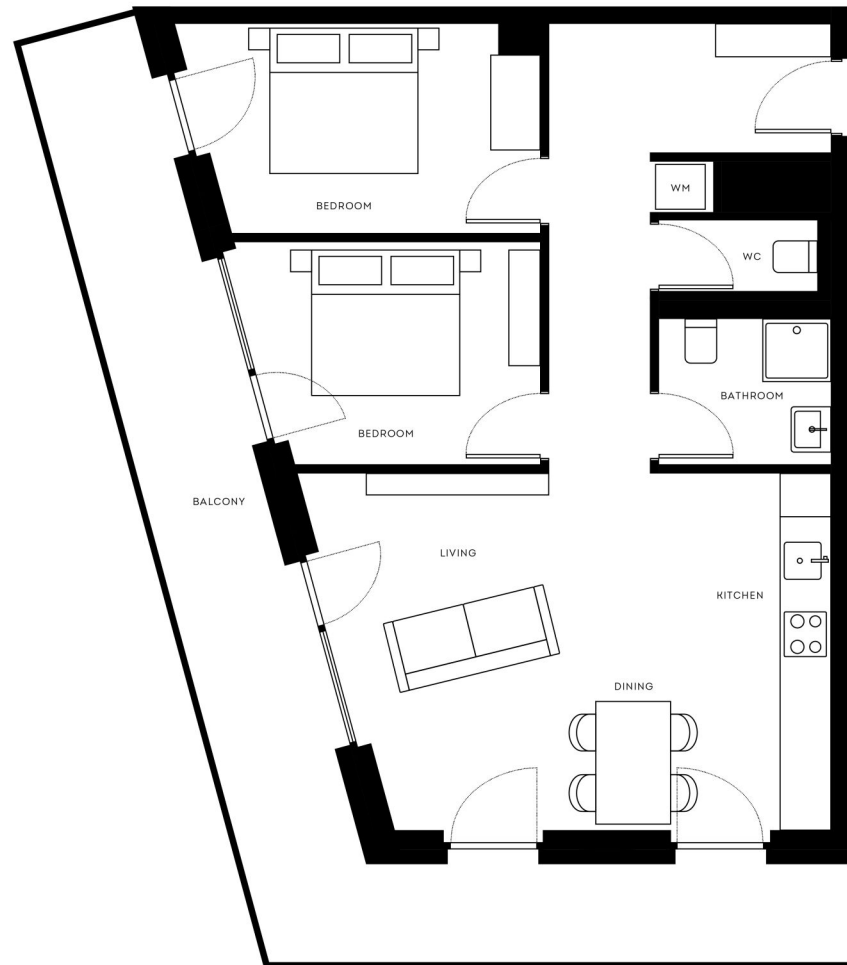


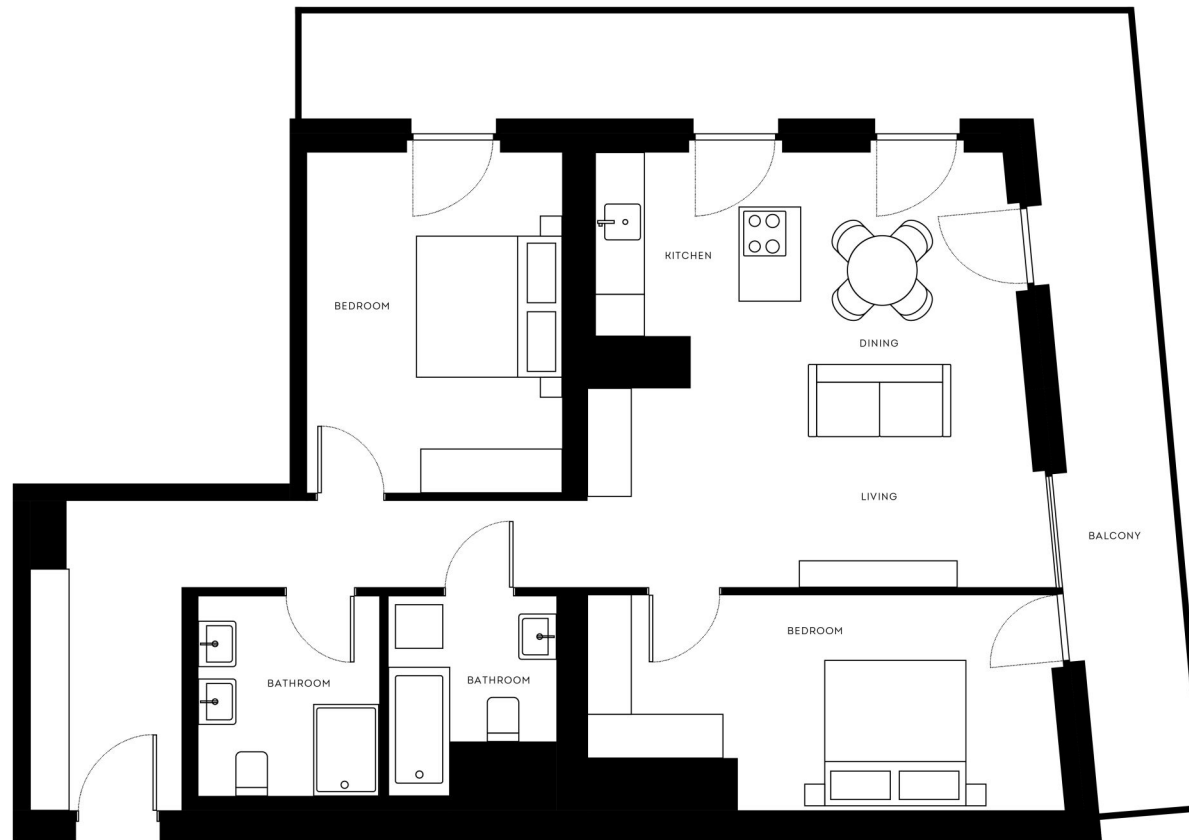


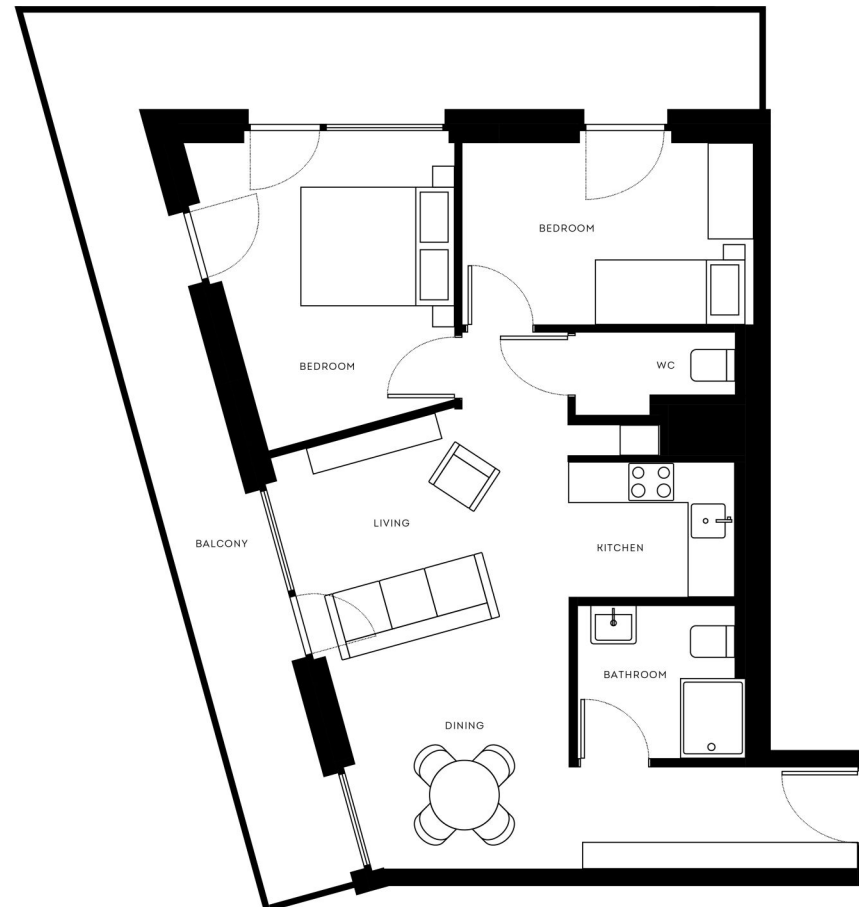


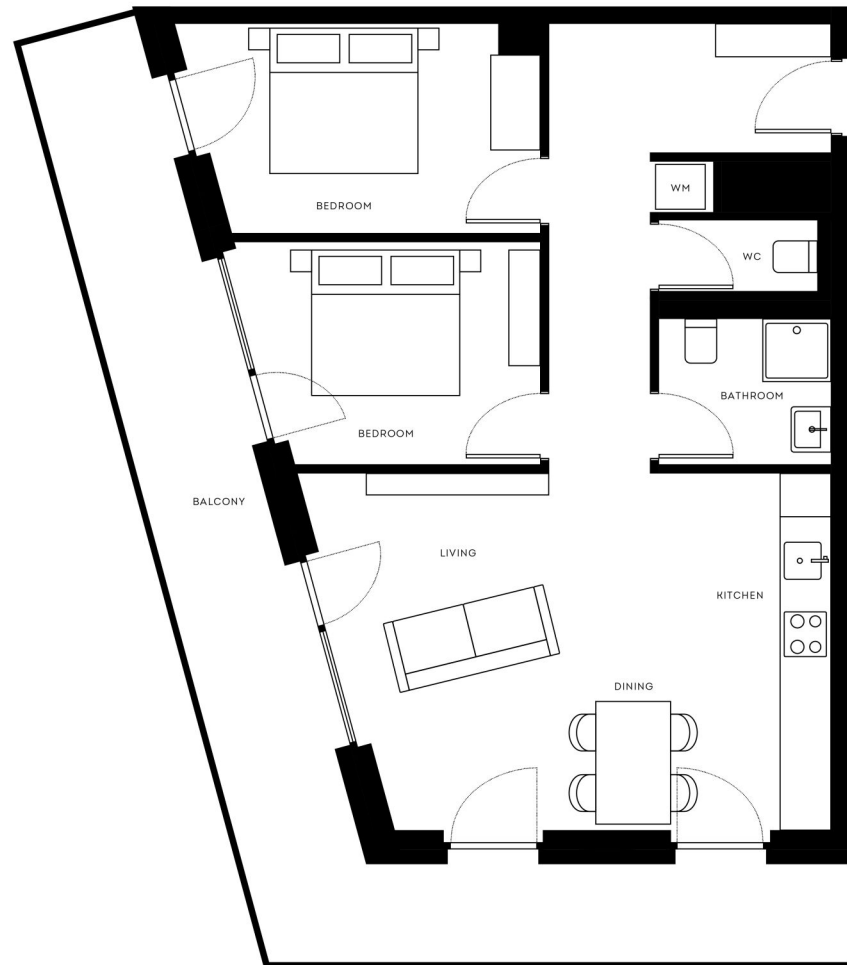


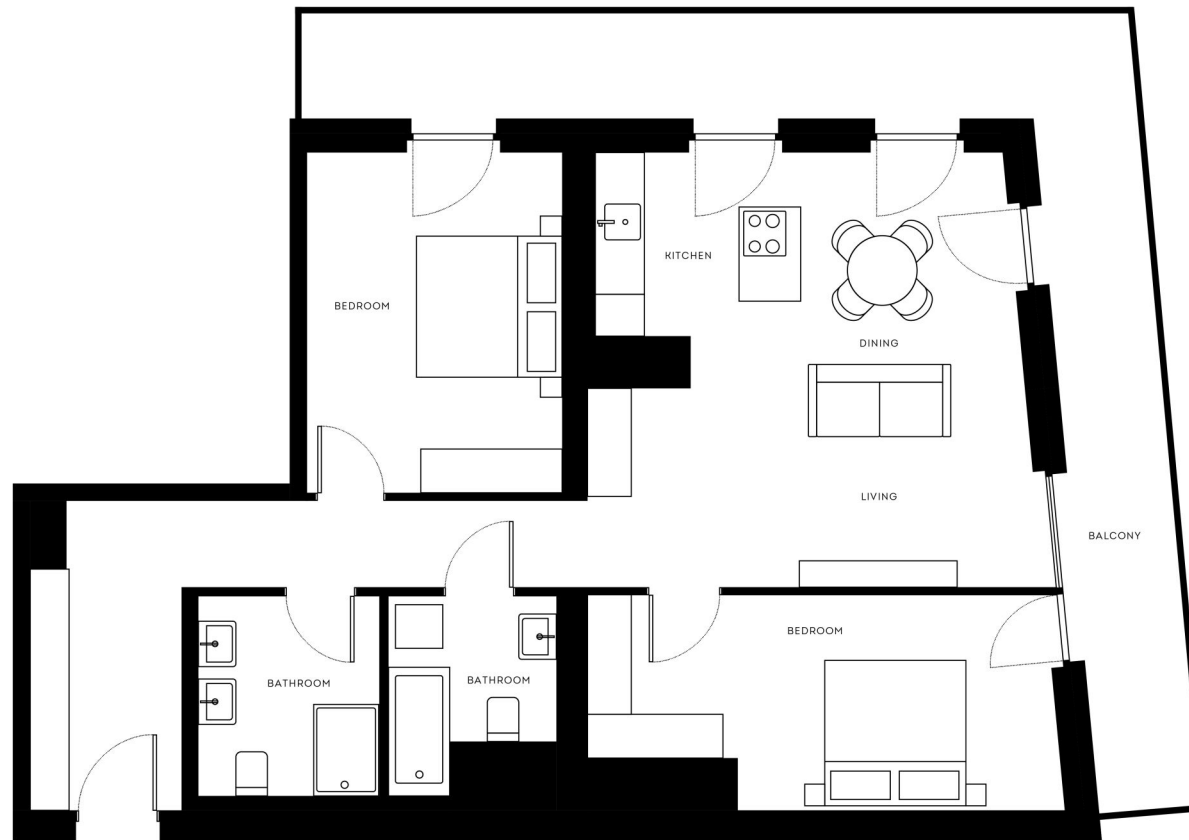


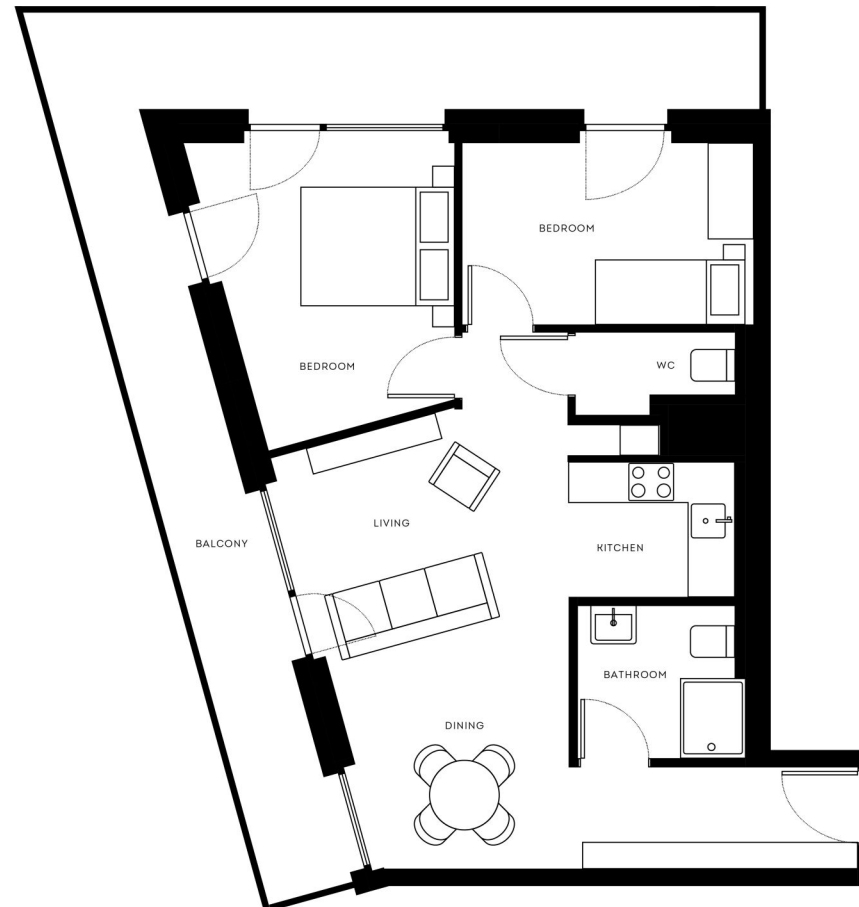


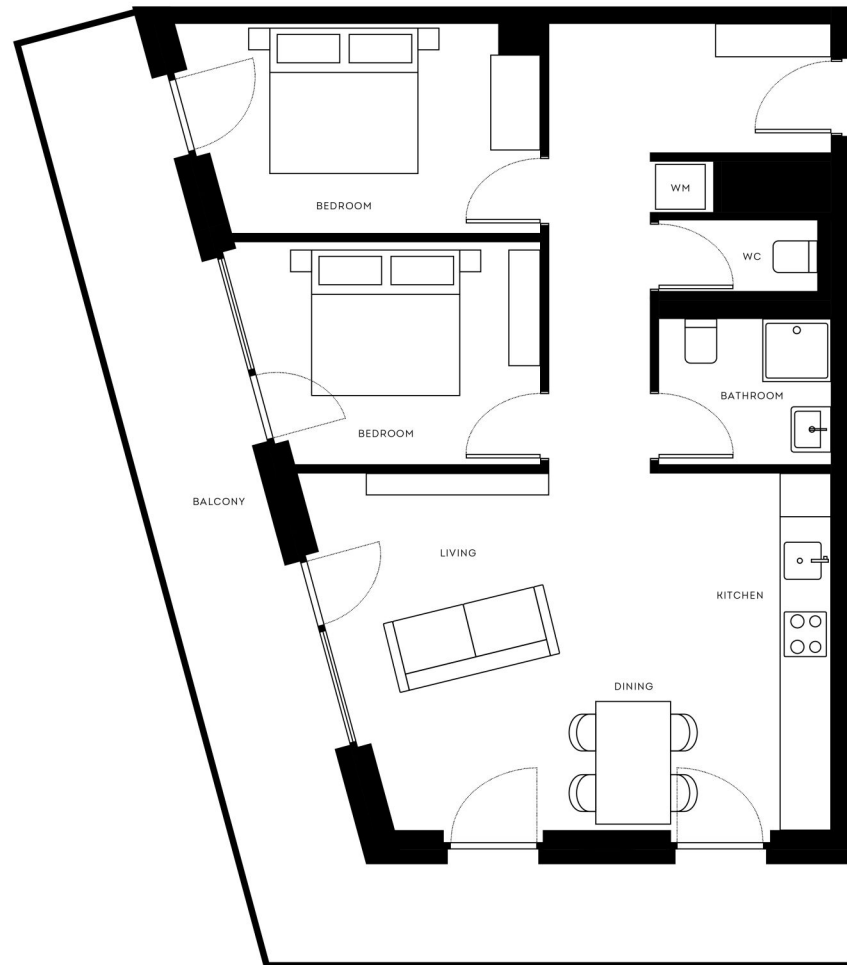


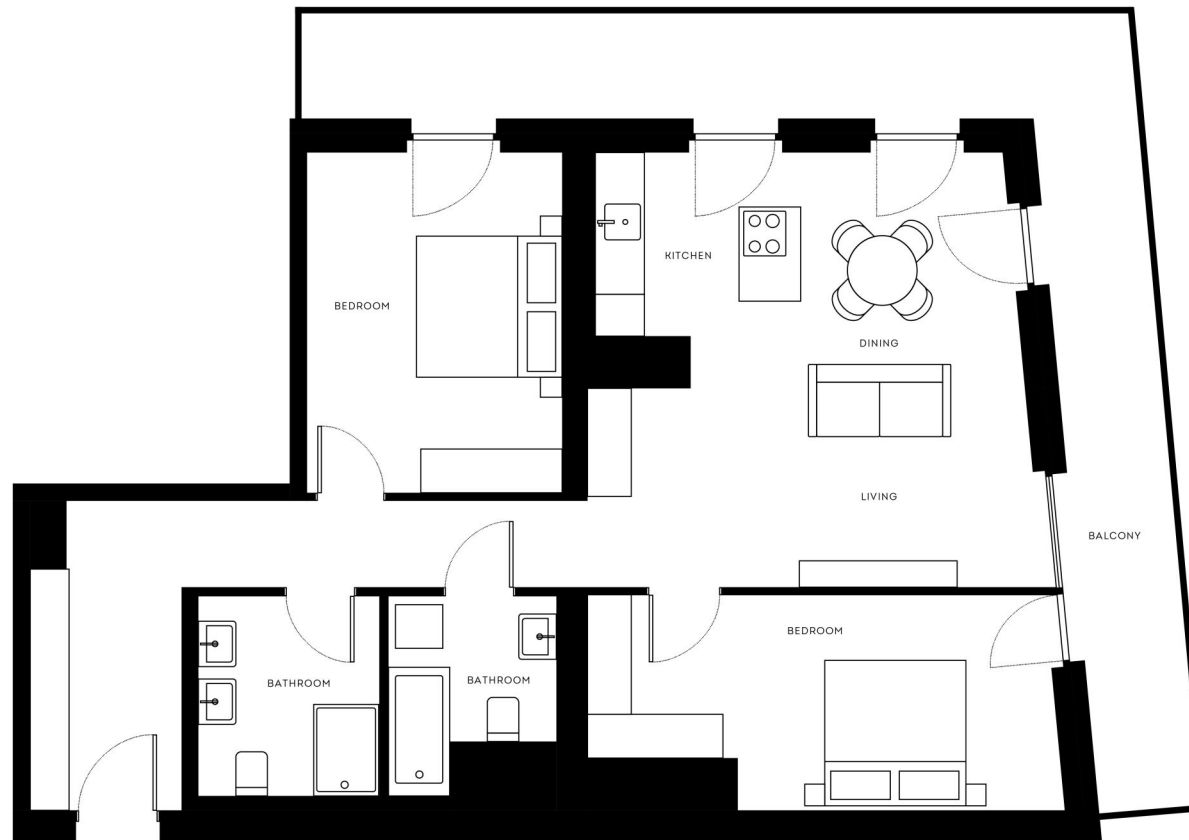


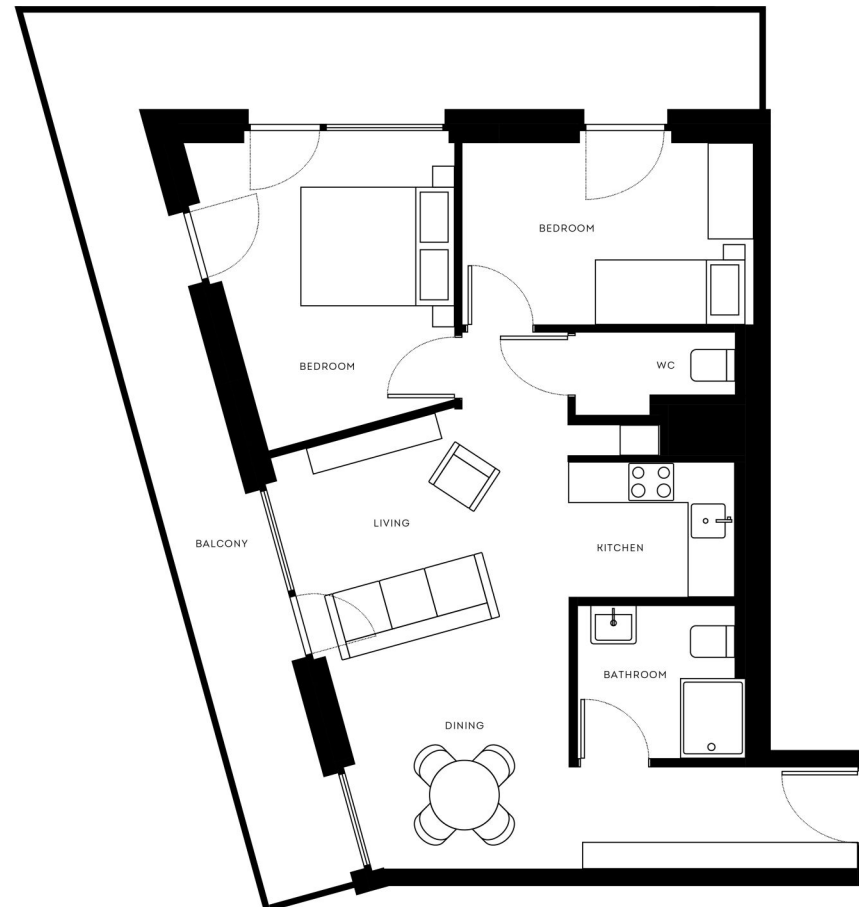


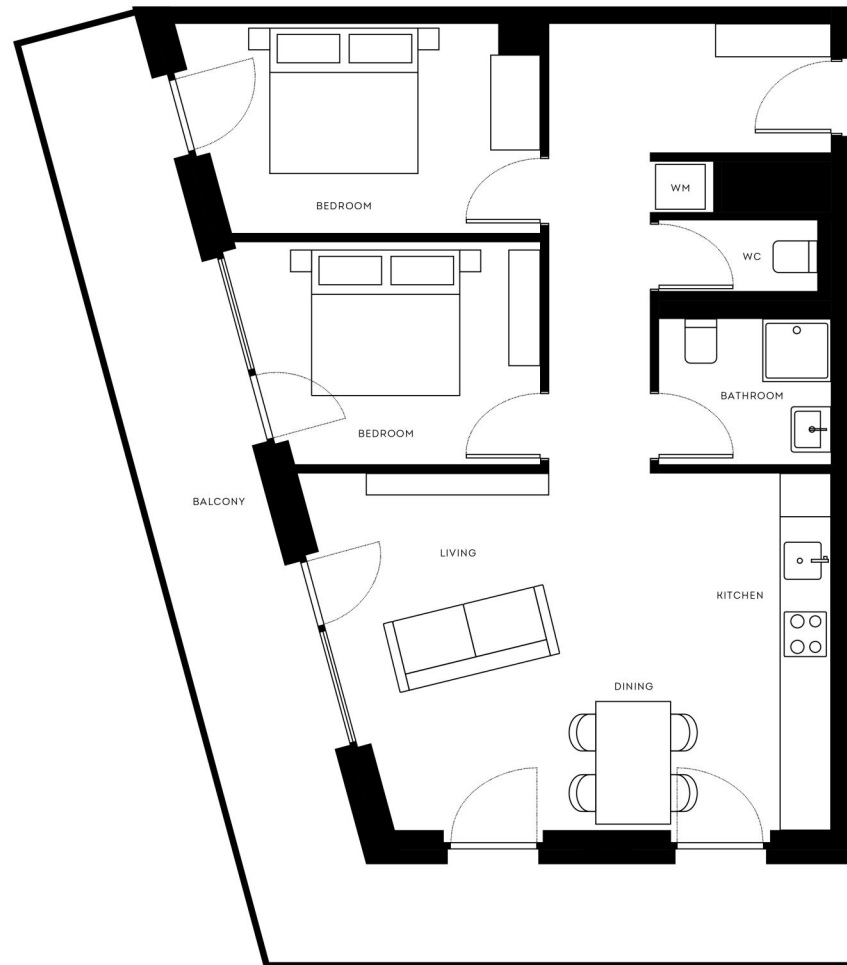


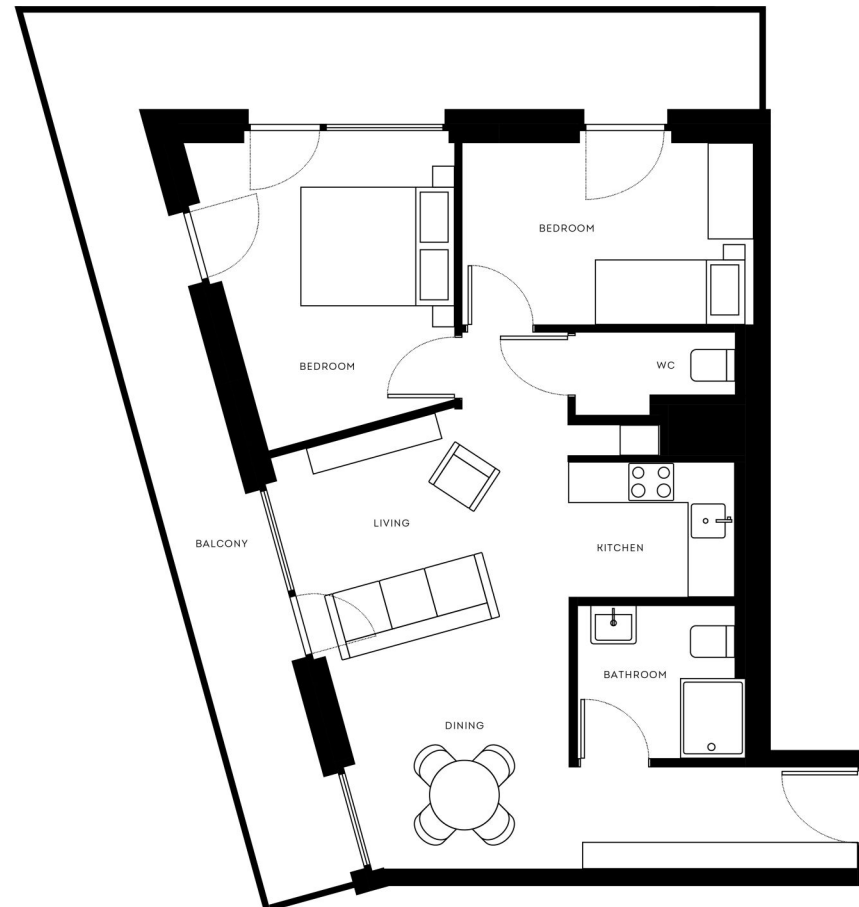


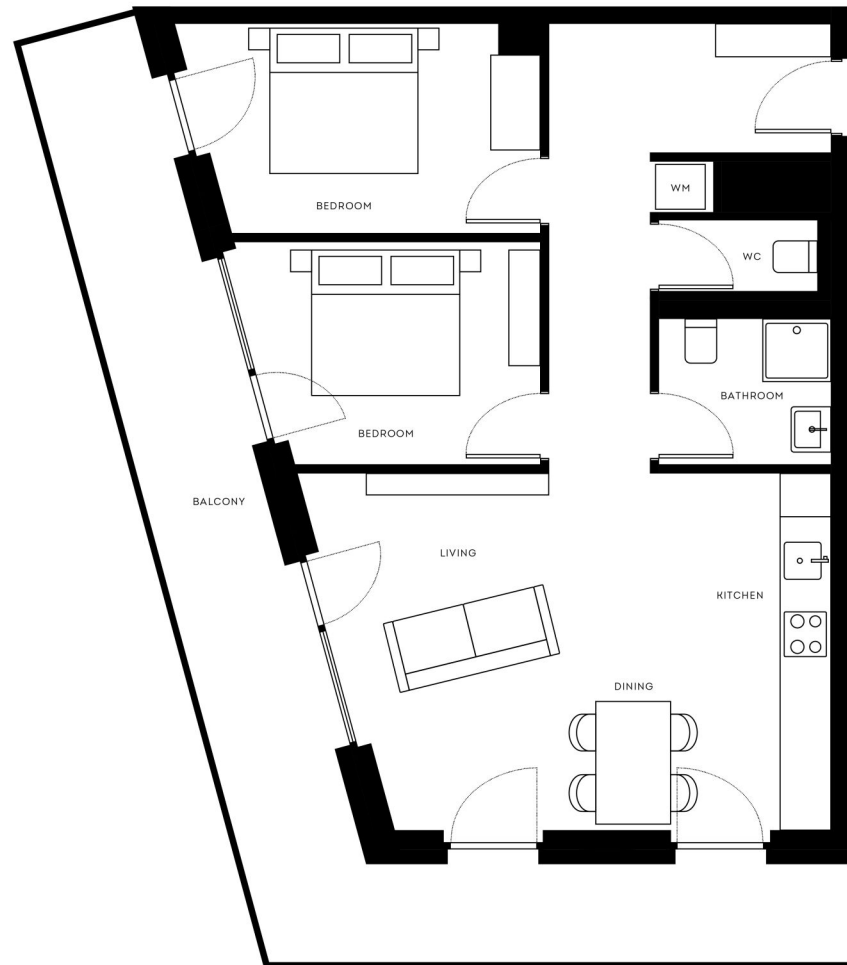


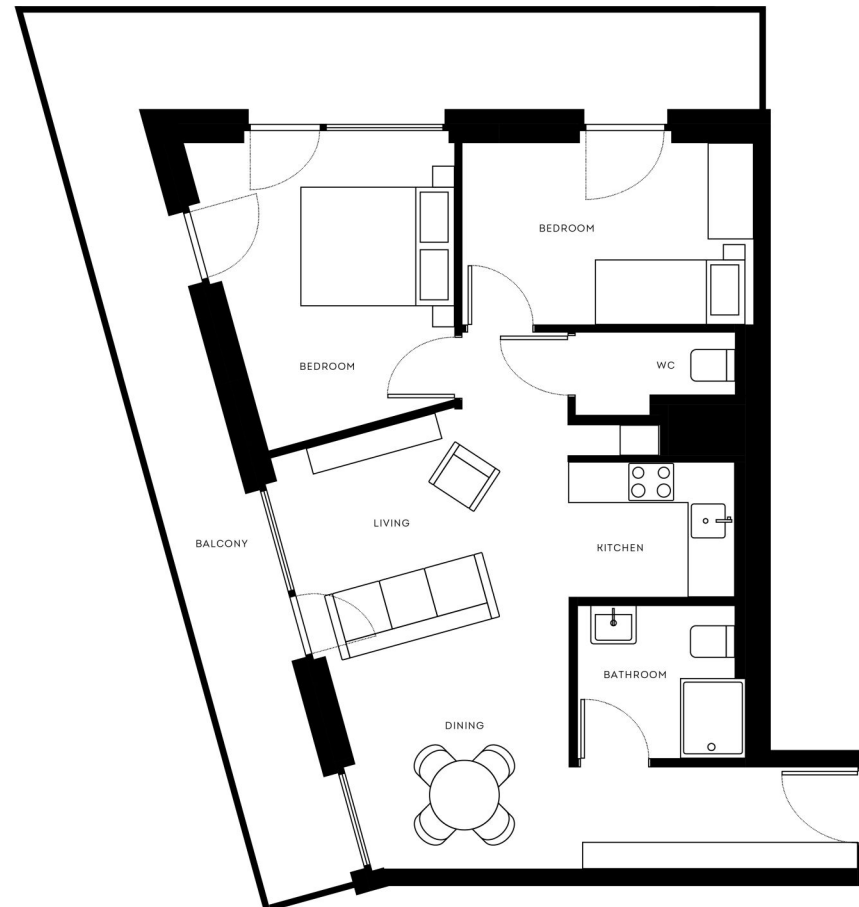


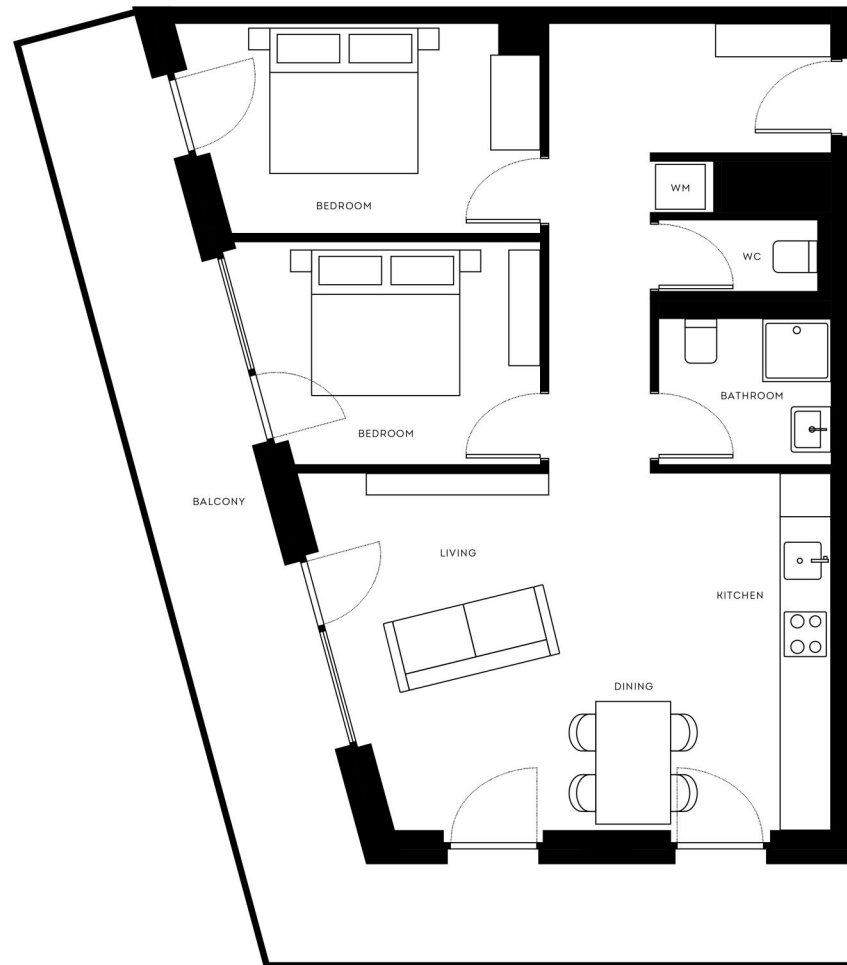


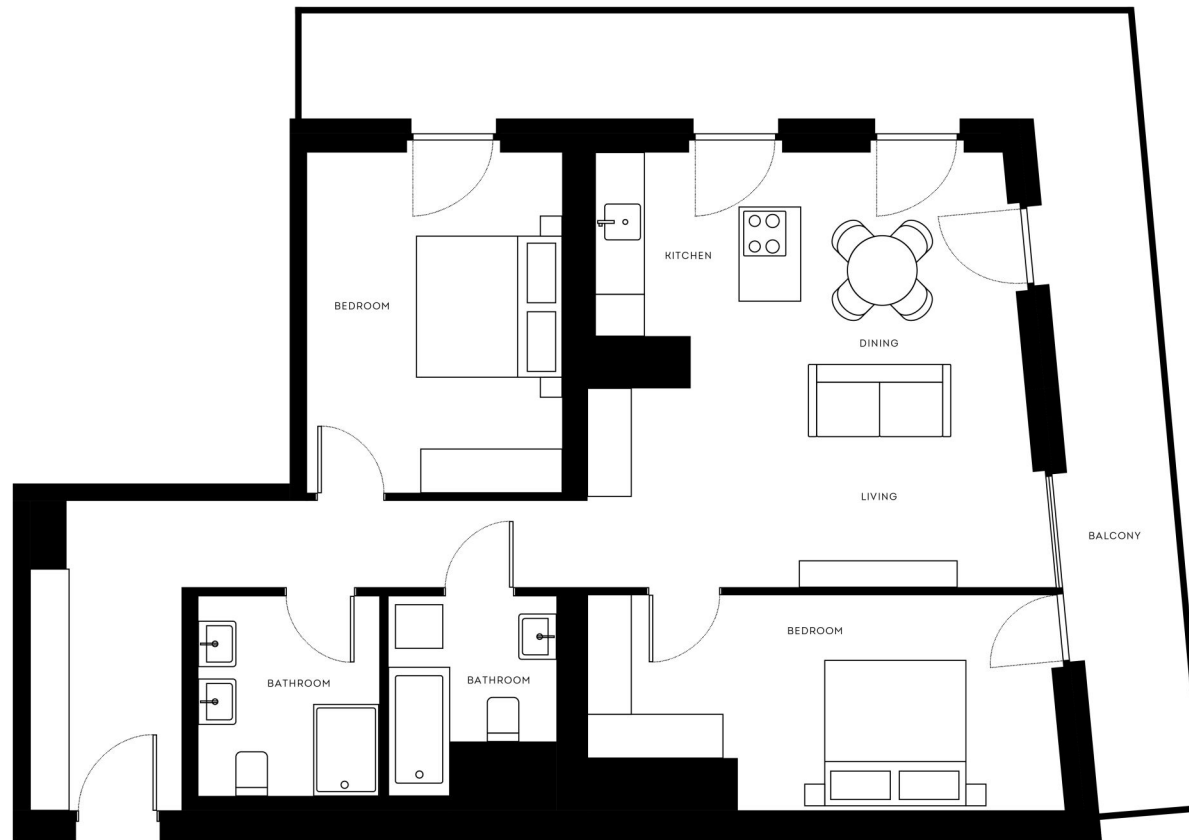












Unser Blick ist immer nach vorne gerichtet:

Die EHL-Immobiliengruppe lebt ihre Unternehmenswerte.  
Täglich. Kompetent. Engagiert. Leidenschaftlich.  
In allen Dienstleistungsbereichen.

Vermittlung	Wohnimmobilien	Anlageobjekte
Bewertung	Vorsorgewohnungen	Zinshäuser
Investment	Büroimmobilien	Betriebsliegenschaften
Asset Management	Einzelhandelsobjekte	Grundstücke
Market Research	Logistikimmobilien	Hotels

EHL Wohnen GmbH

Rathausstraße 1 | A-1010 Wien | T +43 1 512 76 90 | [wohnung@ehl.at](mailto:wohnung@ehl.at) | [wohnung.at](http://wohnung.at)



An alliance member of  
 **BNP PARIBAS**  
**REAL ESTATE**

Wir leben  
Immobilien.

