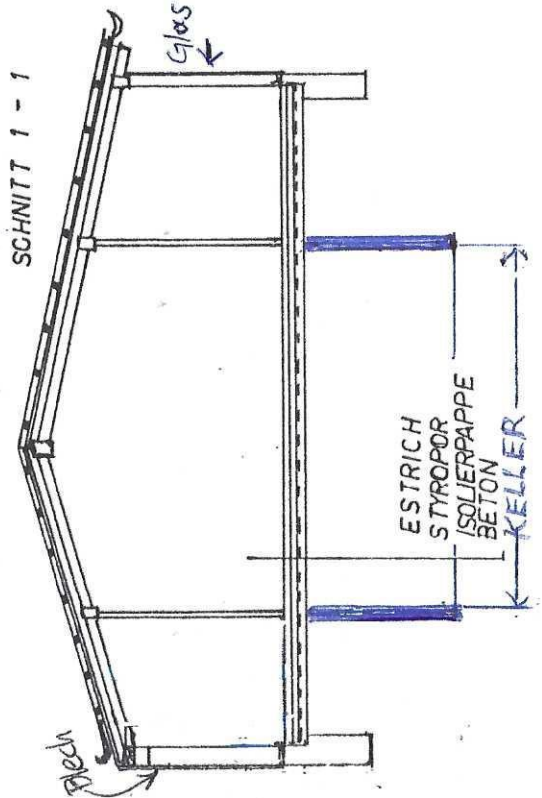
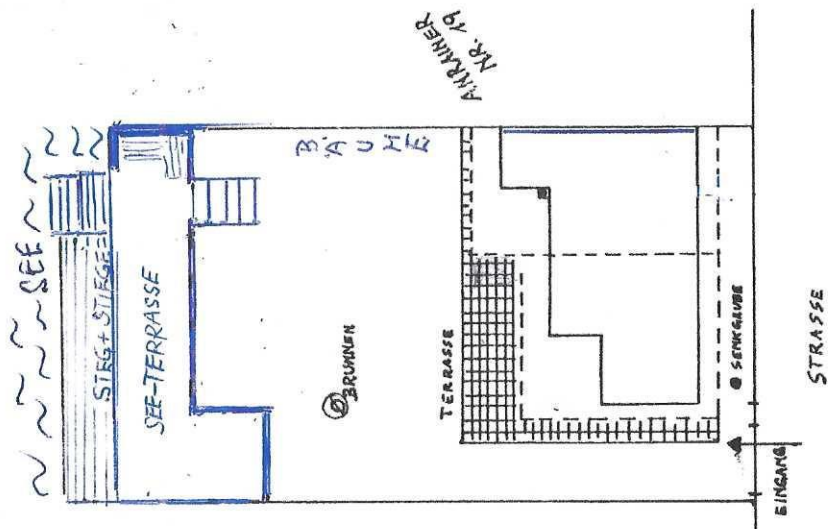
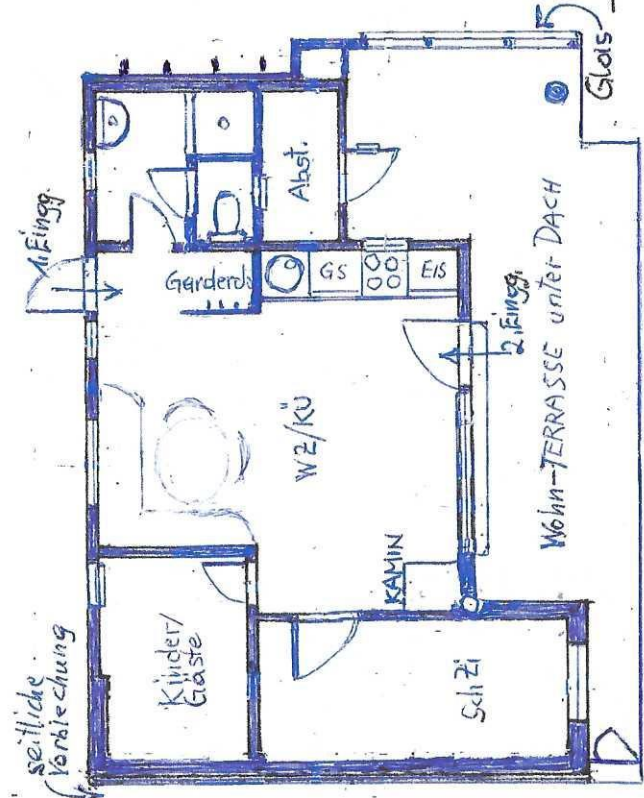
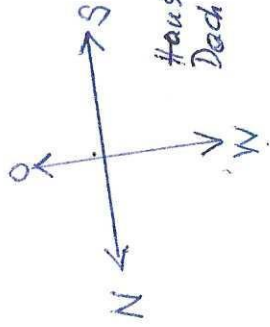


# GRUNDRISS 1:100



LAGEPLAN 1: 250



Haus ca. 45m<sup>2</sup>  
 Dach ca. 70m<sup>2</sup>

# PLAN ÜBER ZUBAU IN UFERPARZELLE

MARGARETE KRÜGER  
 Rasumofskygasse 4/7  
 1030 Wien

BAULEITER / PLANVERFA

BAUWERBER :

SEPTEMBER 1986