

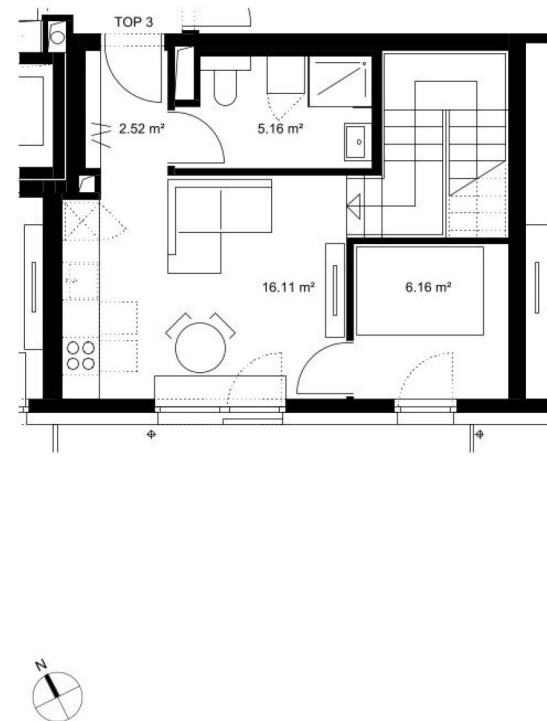
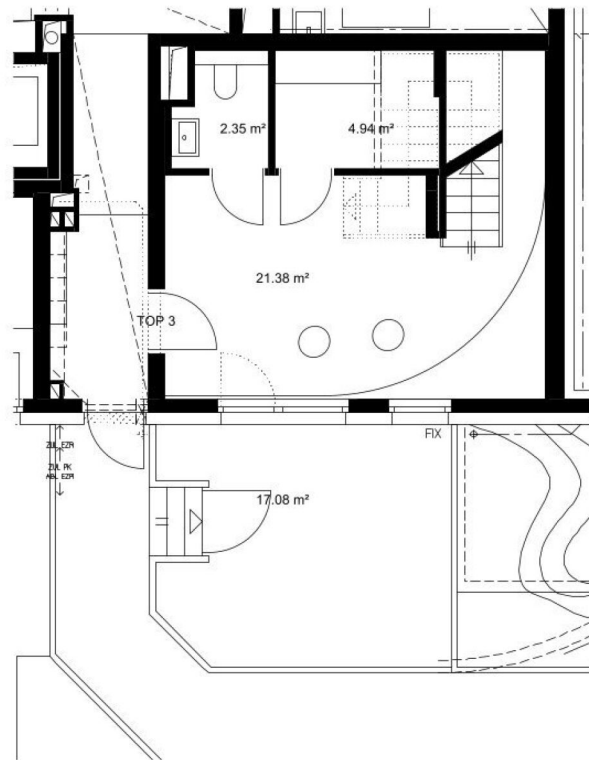


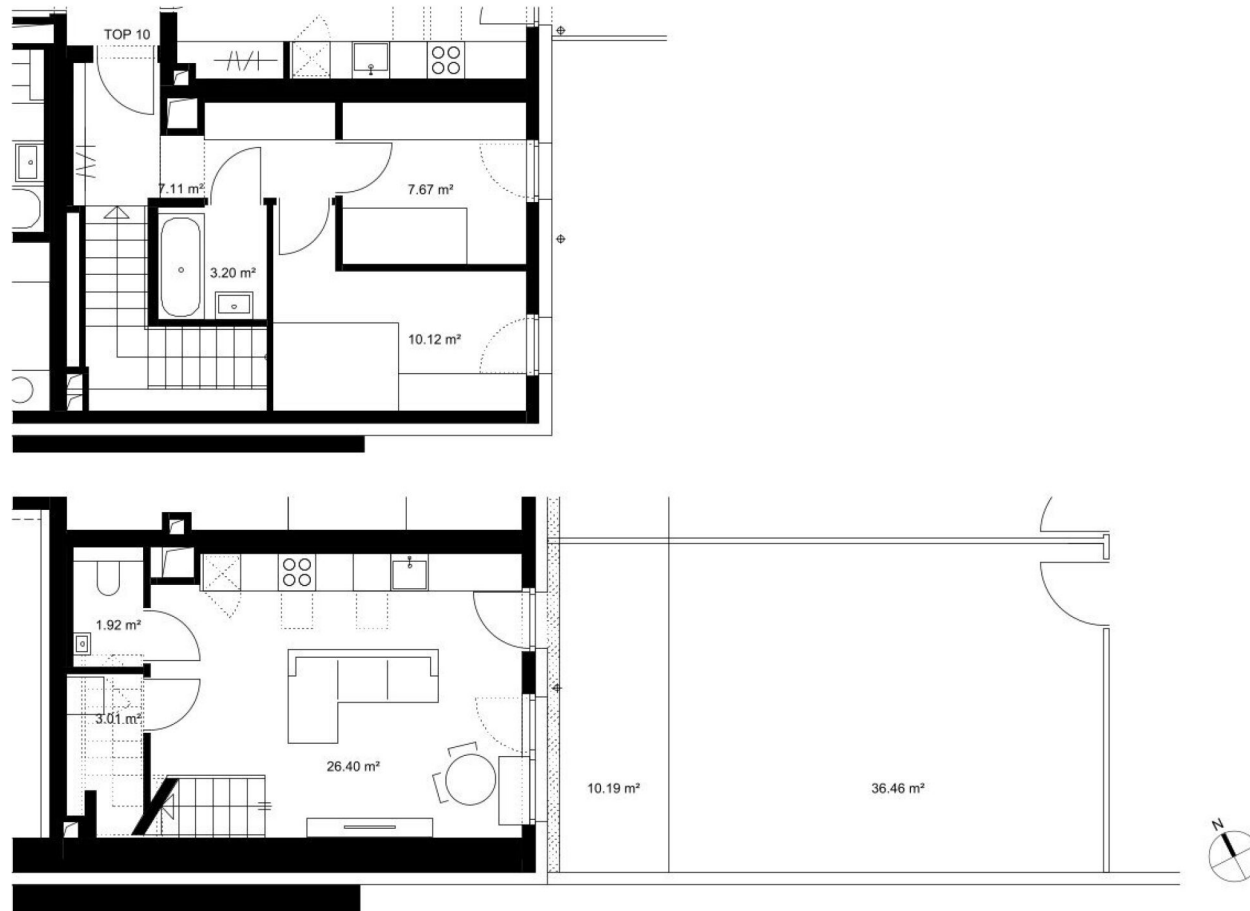
Ihre EHL Planmappe

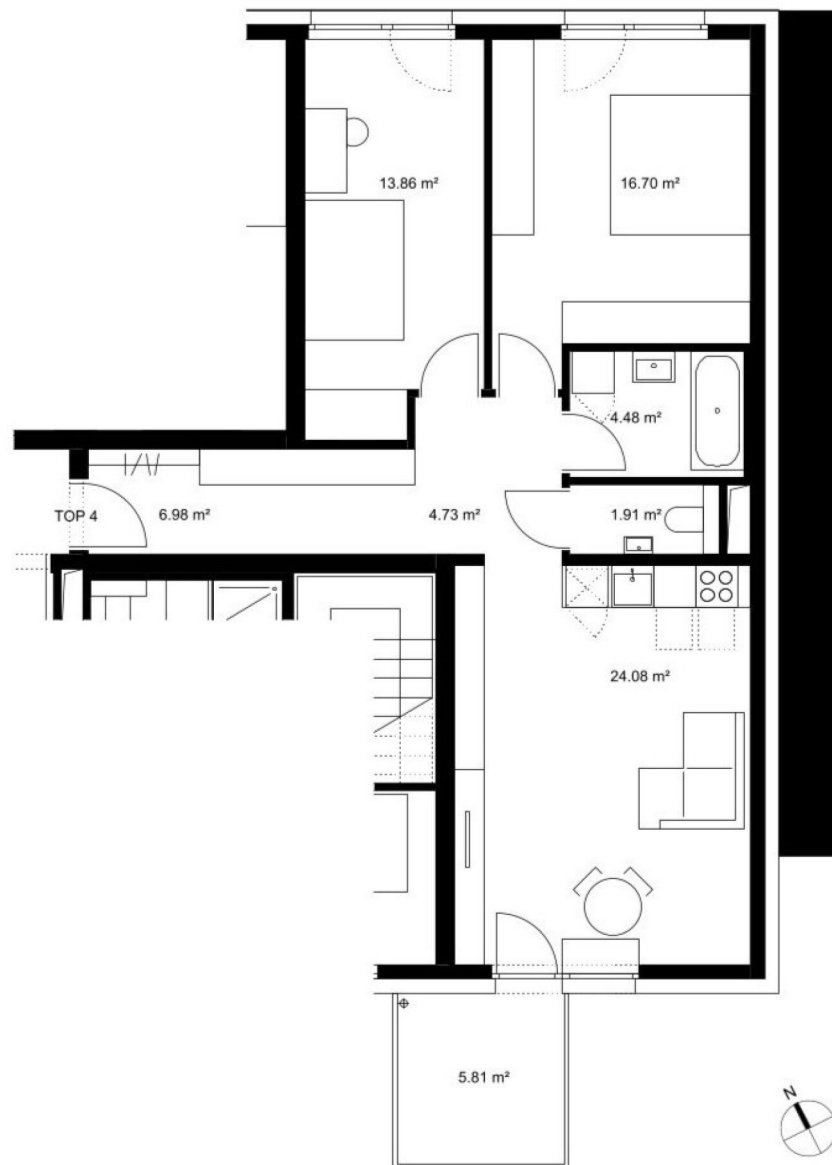
Khekgasse 51, 1230 Wien

Wir leben
Immobilien.

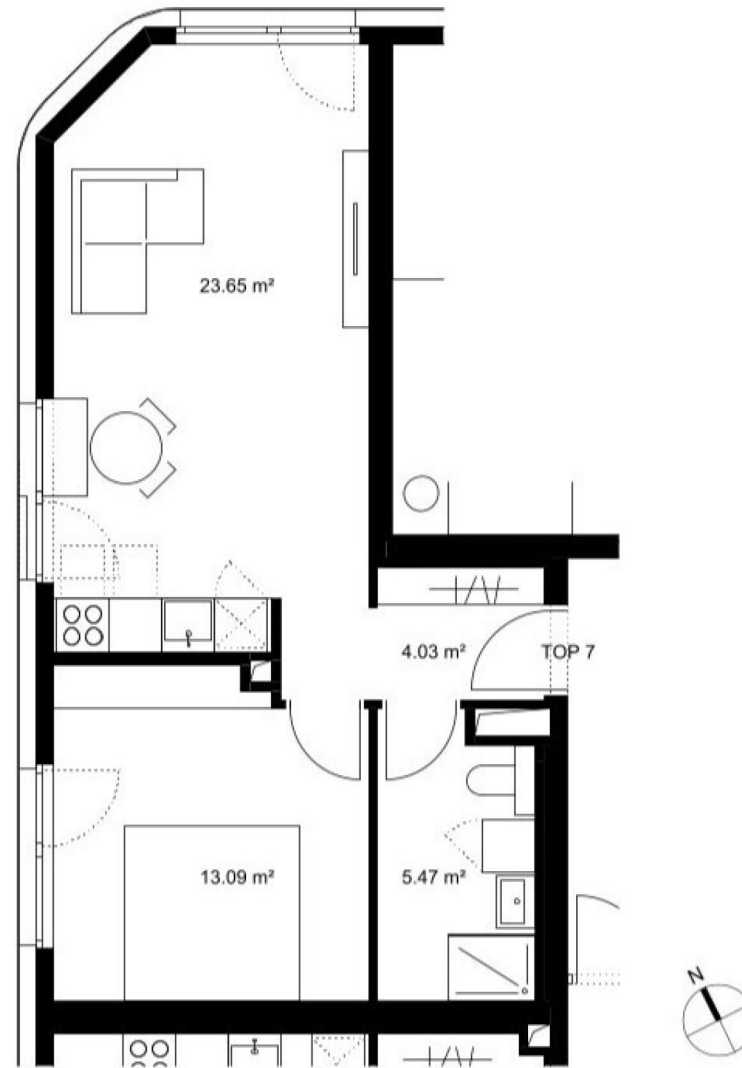


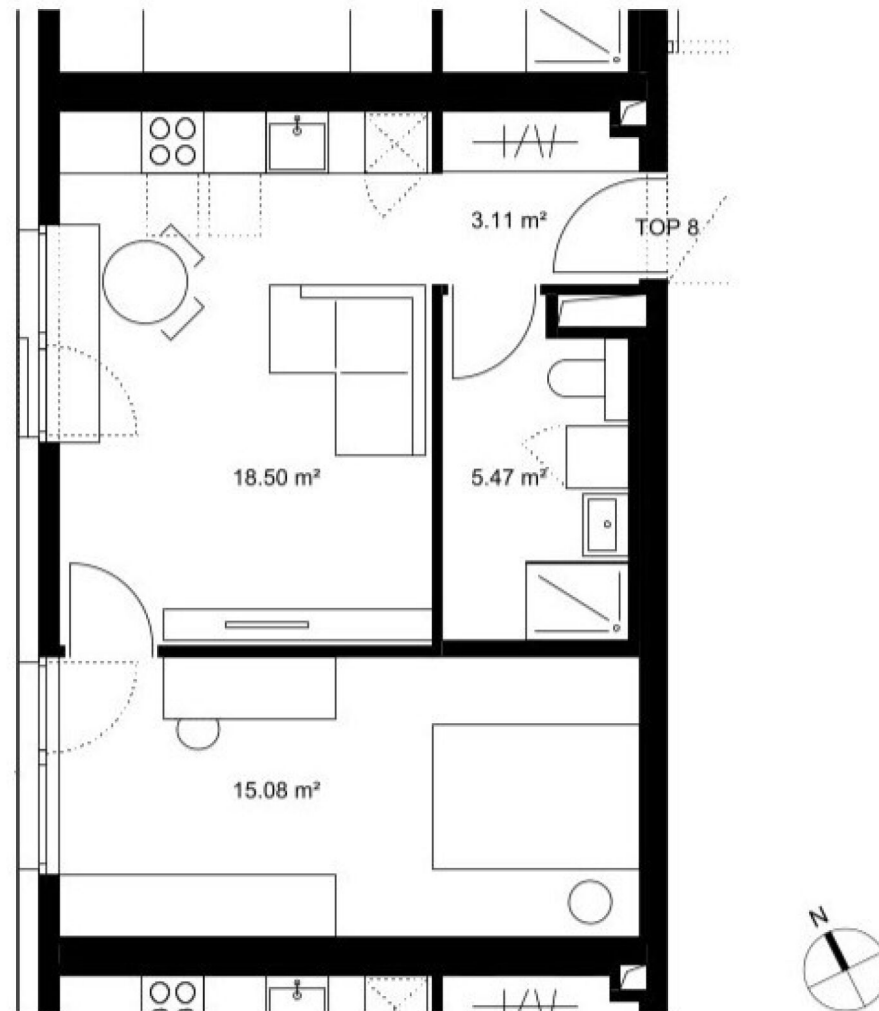




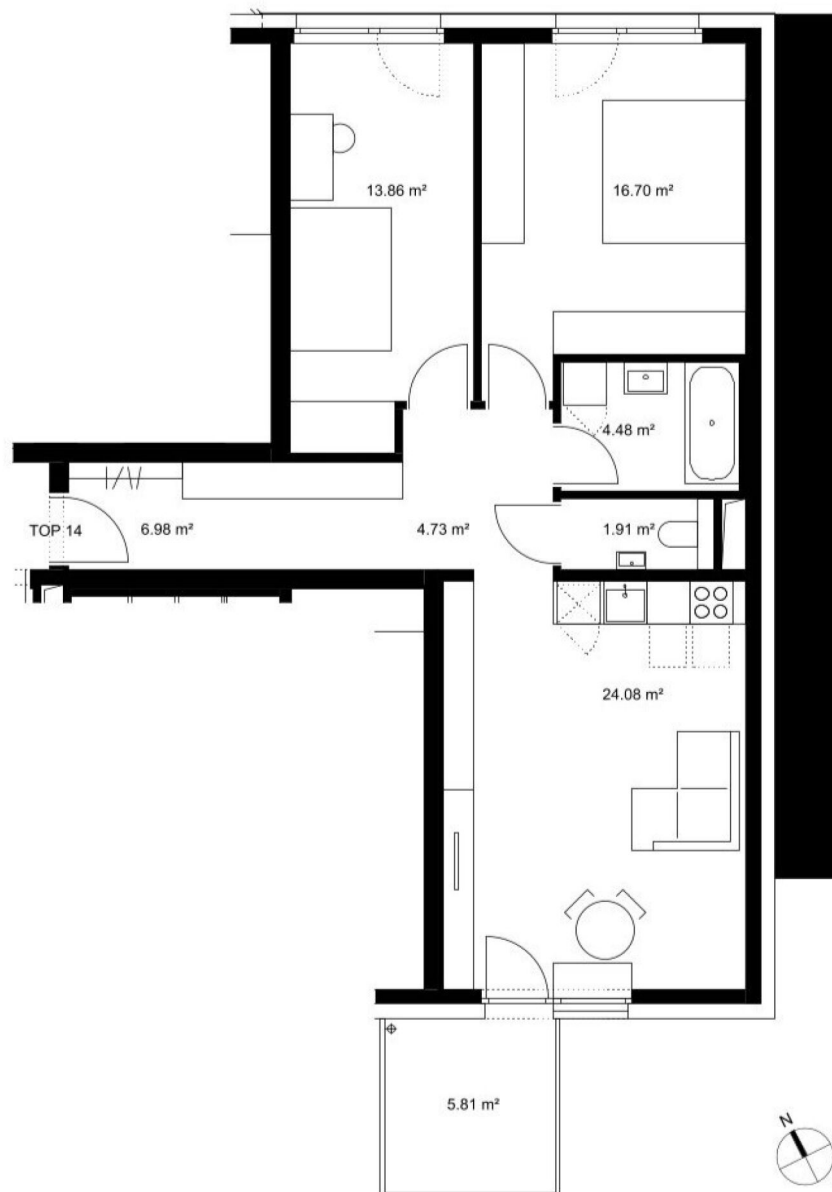


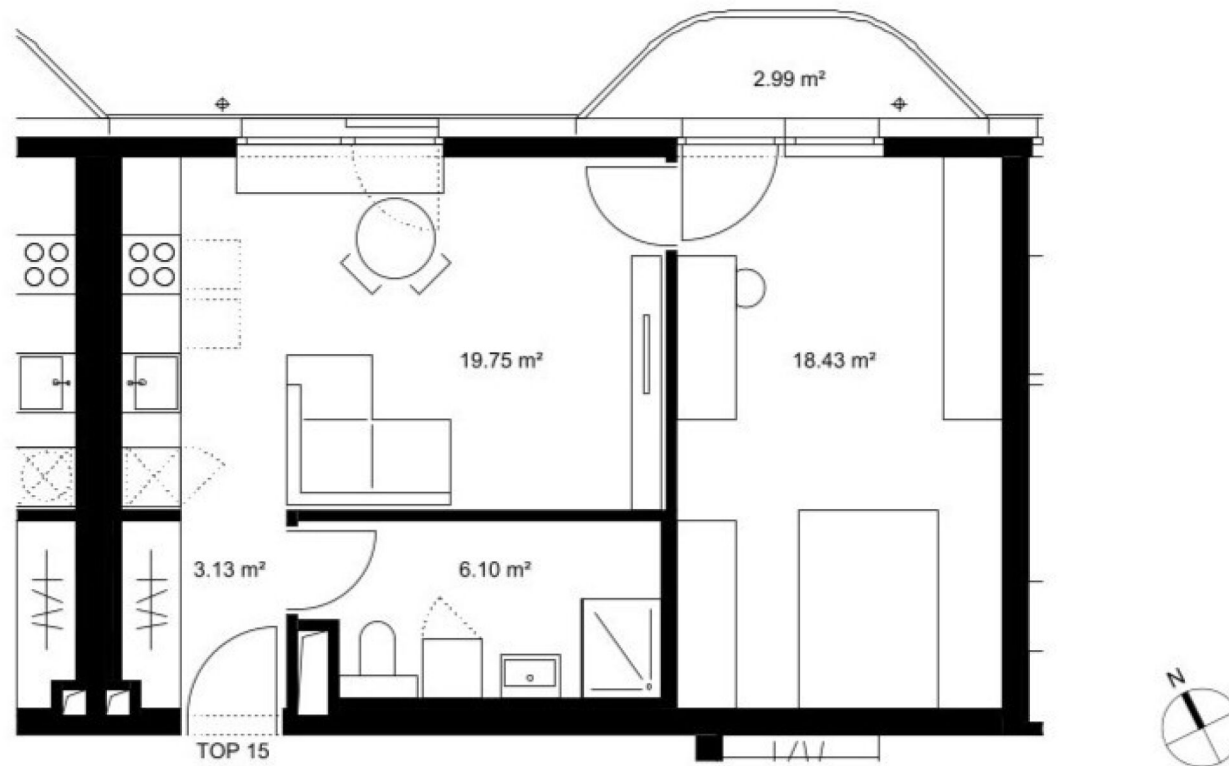






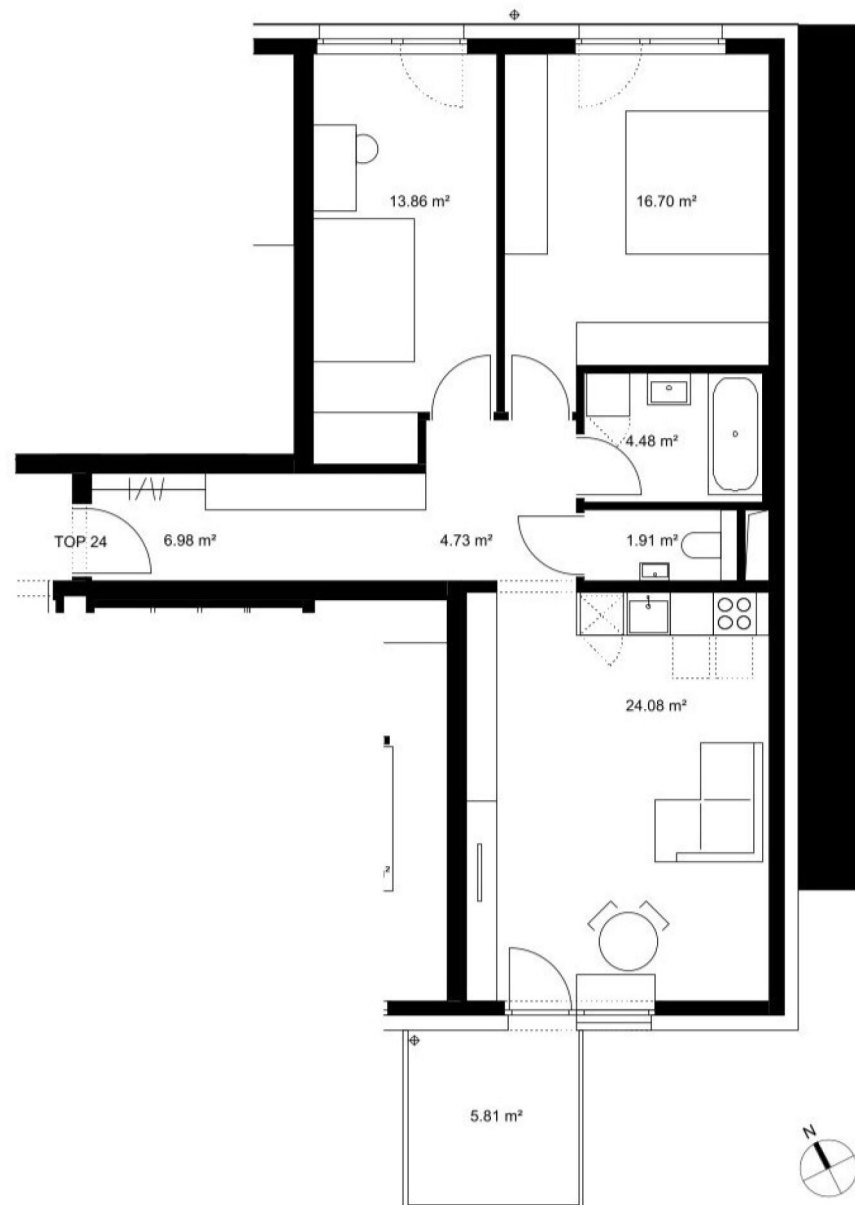






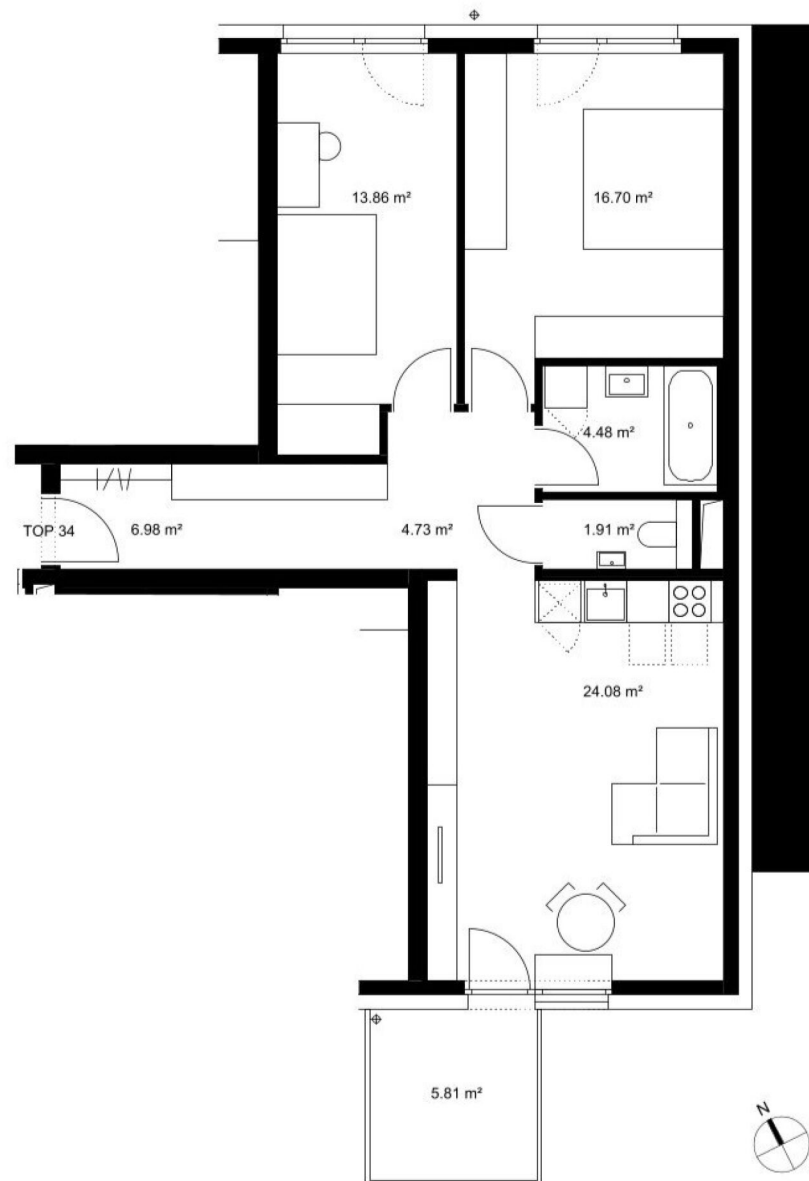


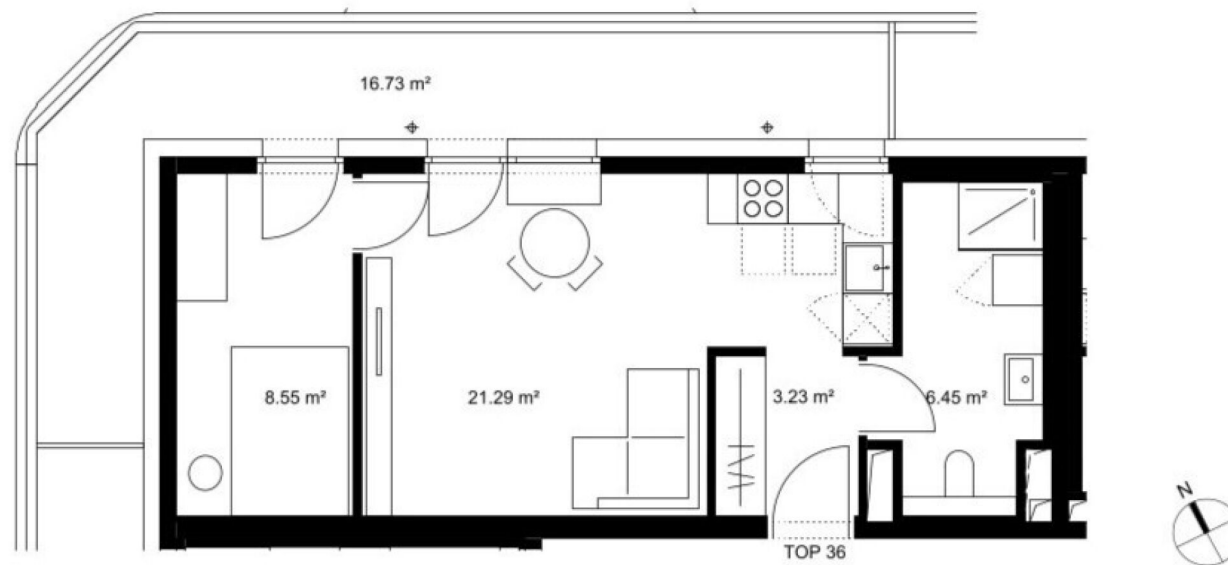


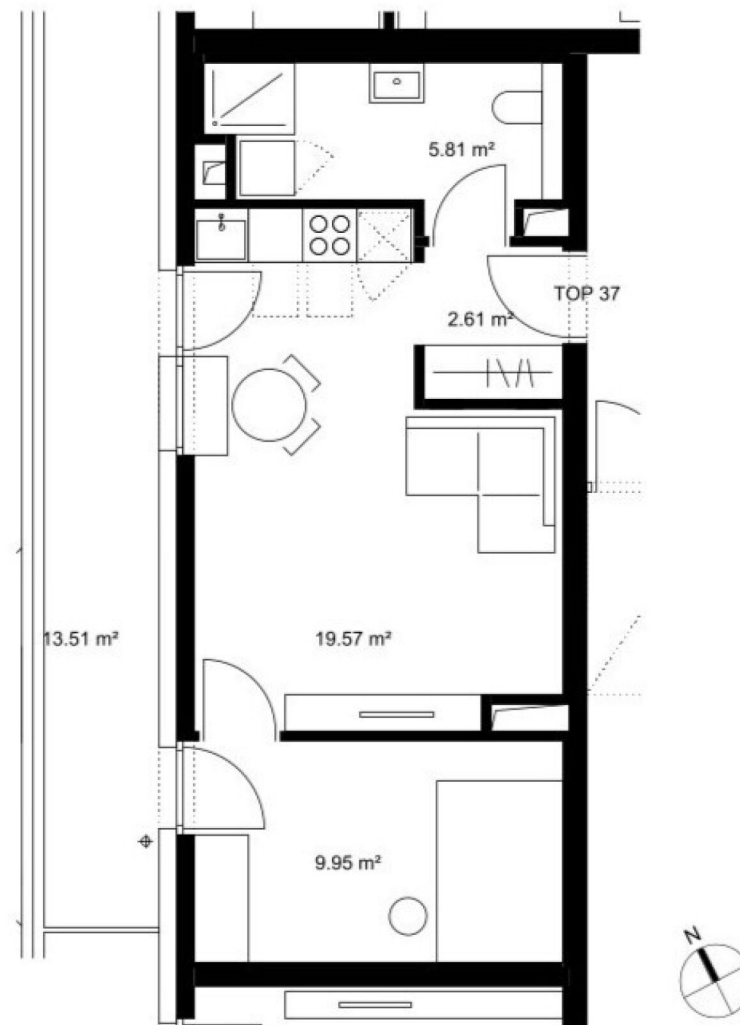


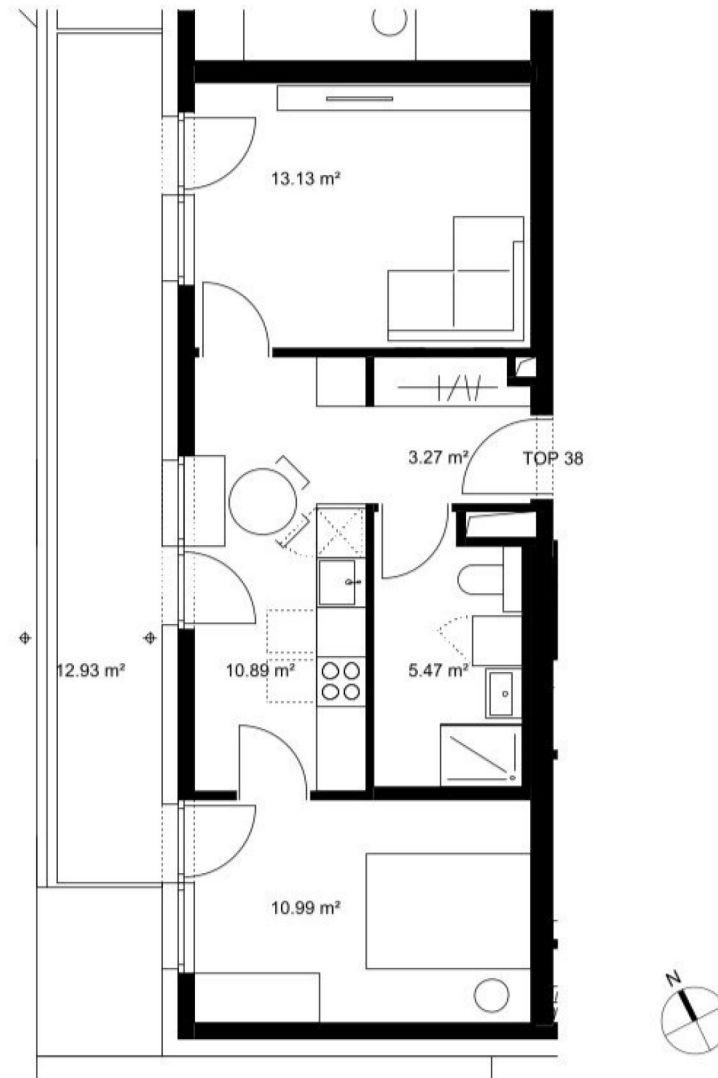


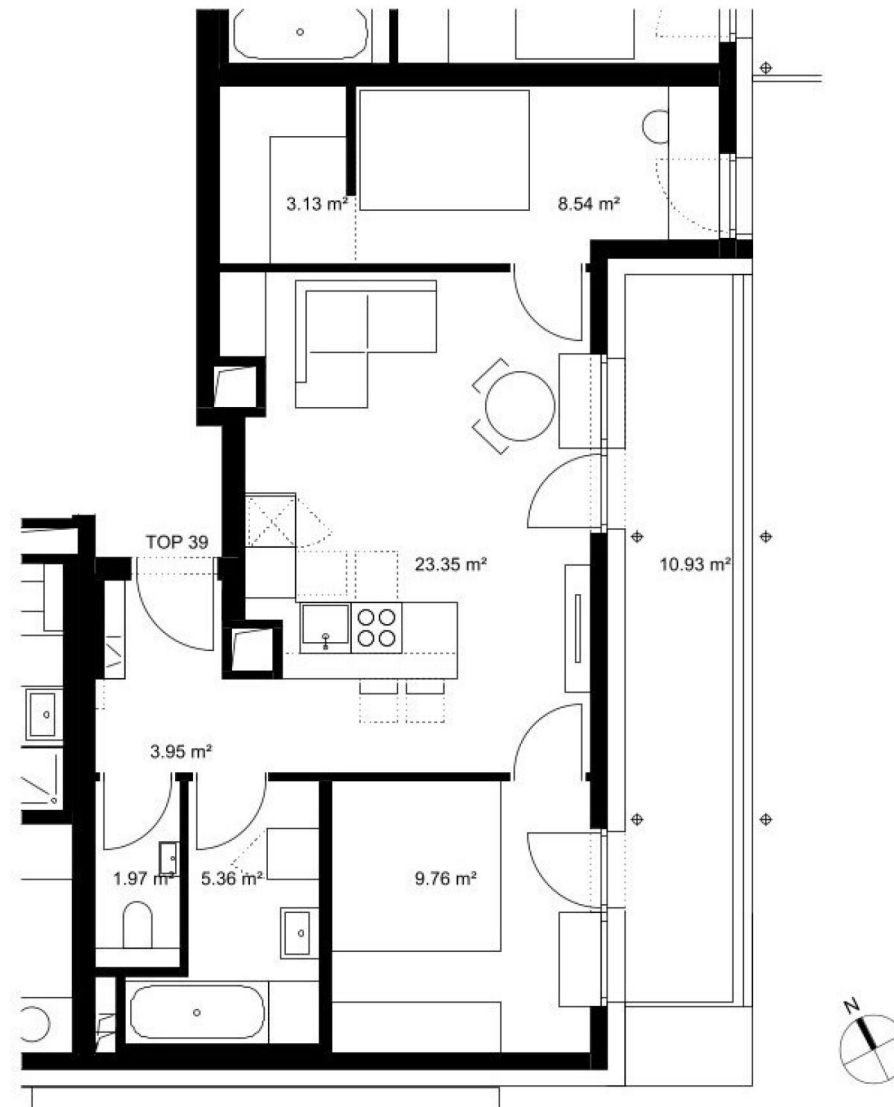


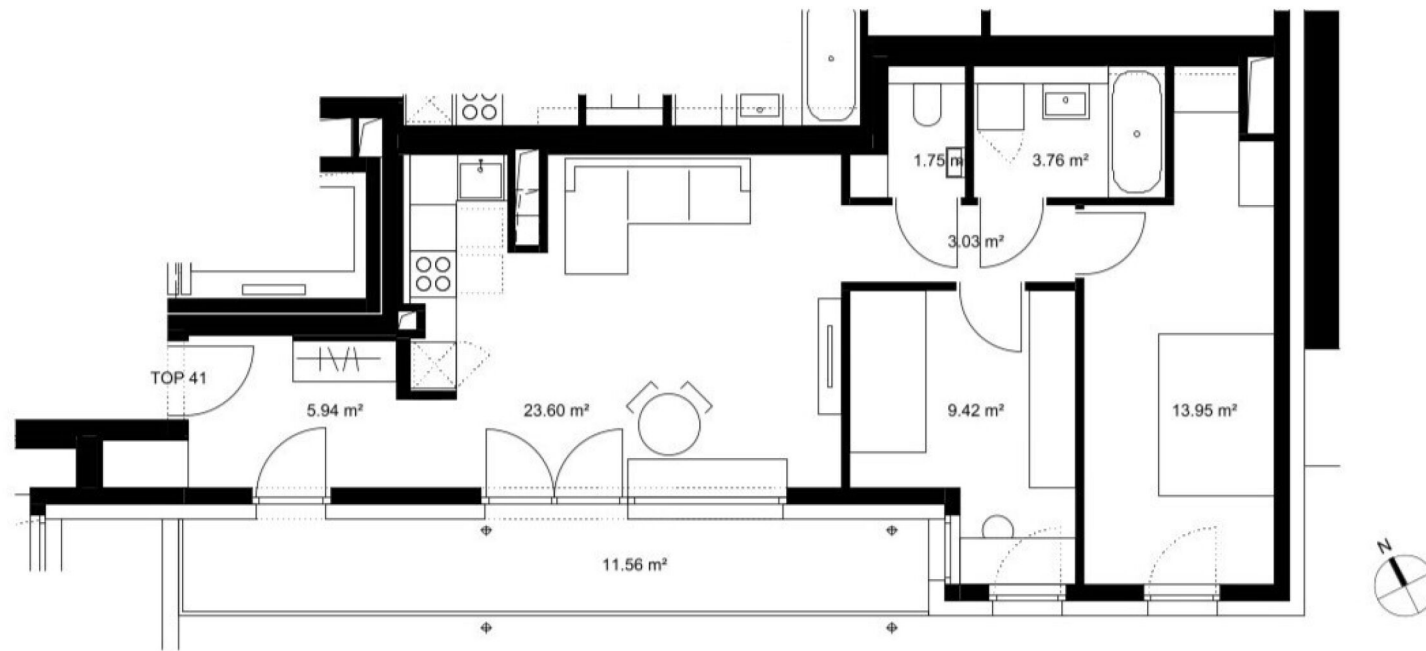






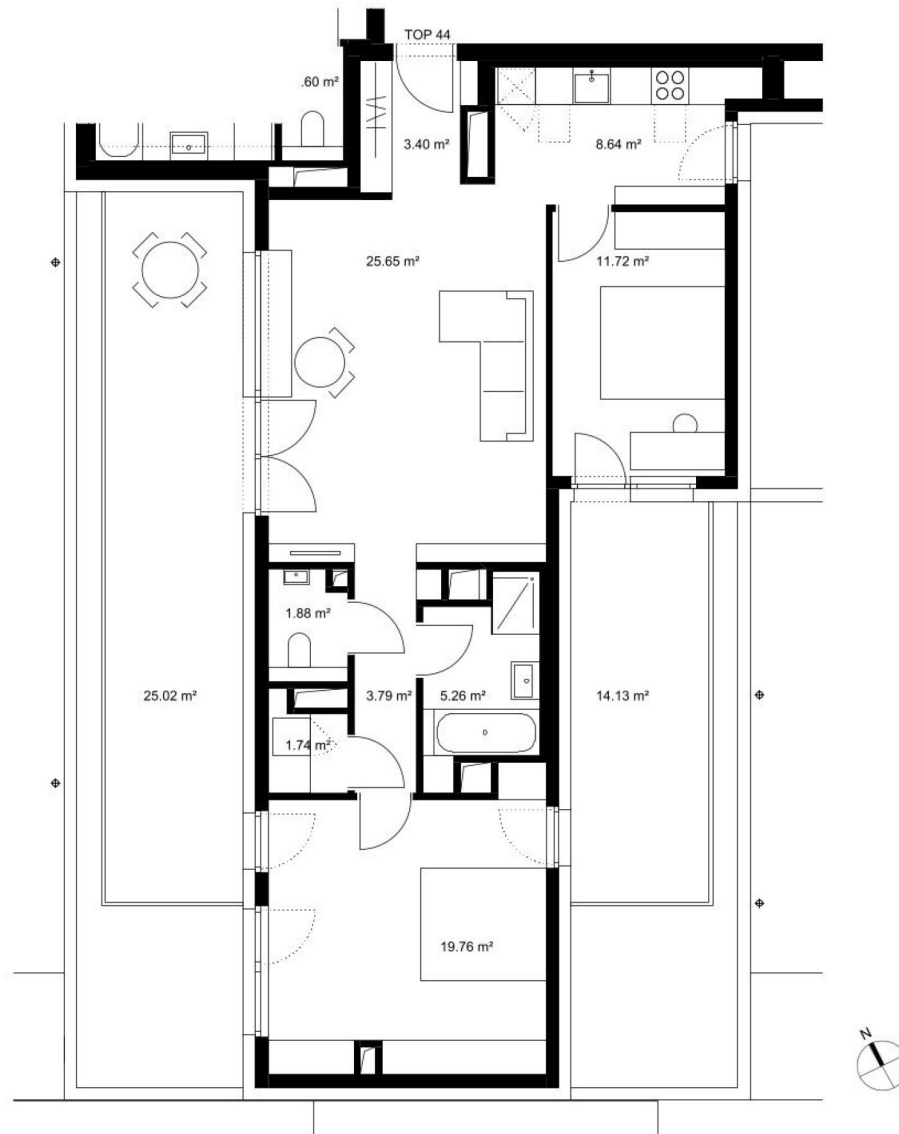


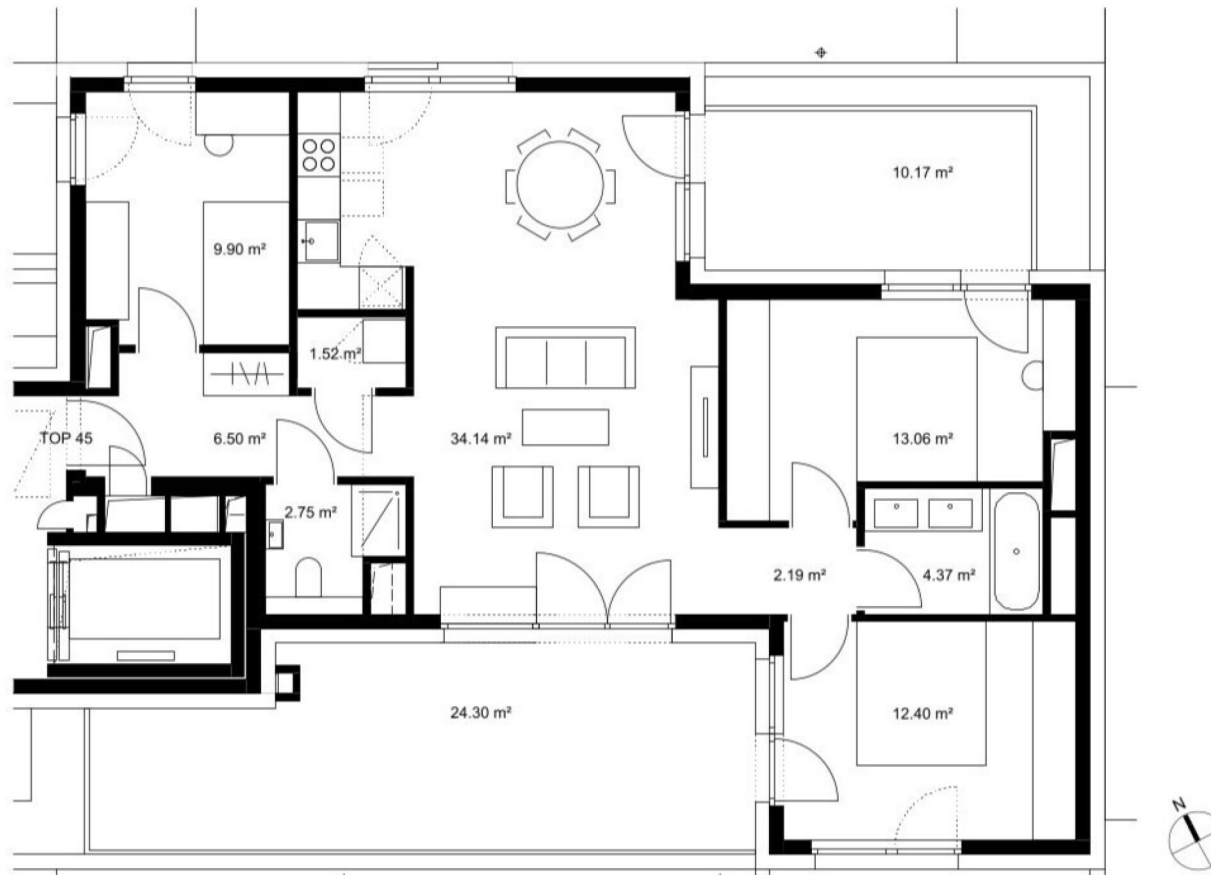












Unser Blick ist immer nach vorne gerichtet:

Die EHL-Immobiliengruppe lebt ihre Unternehmenswerte.
Täglich. Kompetent. Engagiert. Leidenschaftlich.
In allen Dienstleistungsbereichen.

| | | |
|------------------|----------------------|------------------------|
| Vermittlung | Wohnimmobilien | Anlageobjekte |
| Bewertung | Vorsorgewohnungen | Zinshäuser |
| Investment | Büroimmobilien | Betriebsliegenschaften |
| Asset Management | Einzelhandelsobjekte | Grundstücke |
| Market Research | Logistikimmobilien | Hotels |

EHL Wohnen GmbH

Prinz-Eugen-Straße 8-10, 1040 Wien | T +43 1 512 76 90 | wohnung@ehl.at | wohnung.at



An alliance member of
 **BNP PARIBAS**
REAL ESTATE

Wir leben
Immobilien.

