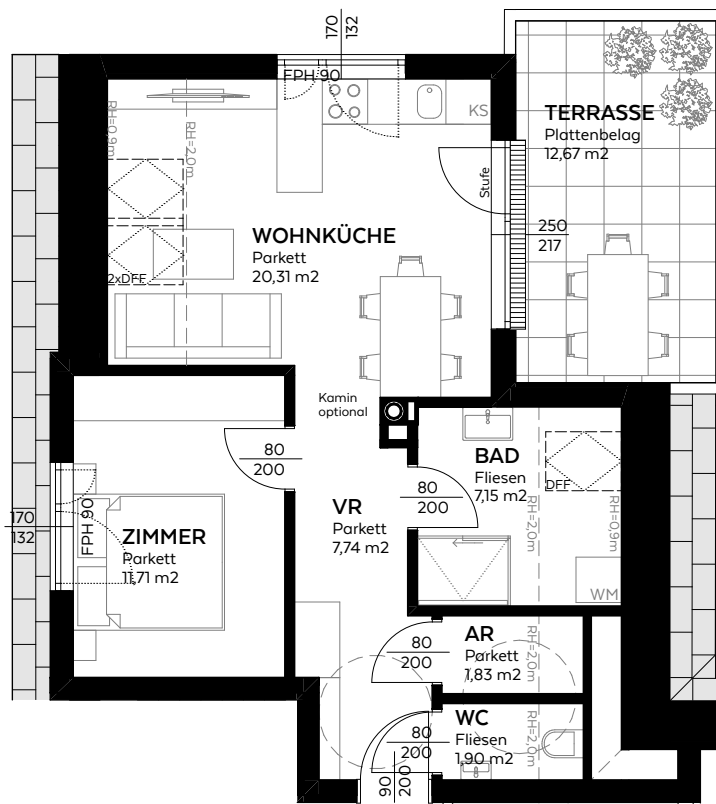
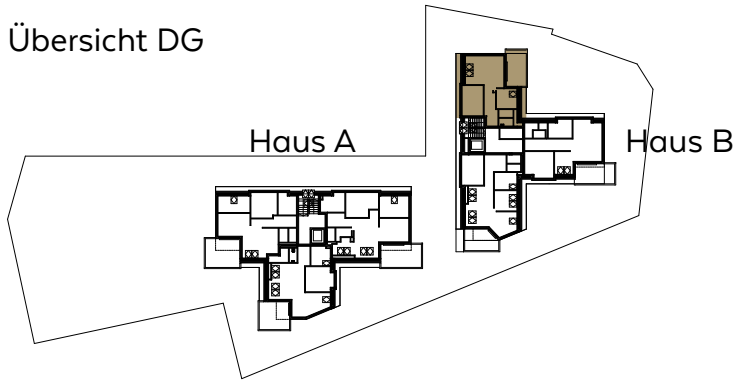
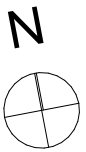


Übersicht DG



Top B9	
Wohnräume	50,64 m ²
Terrasse	12,67 m ²
Keller	3,69 m ²
SUMME	67,00 m²



ADM-617
 M=1:100
 STAND 12.12.2022
 WWW.ALEGRE.AT

Dachgeschoßwohnung
TOP B9
 Haus B - DG
 50,6m²

