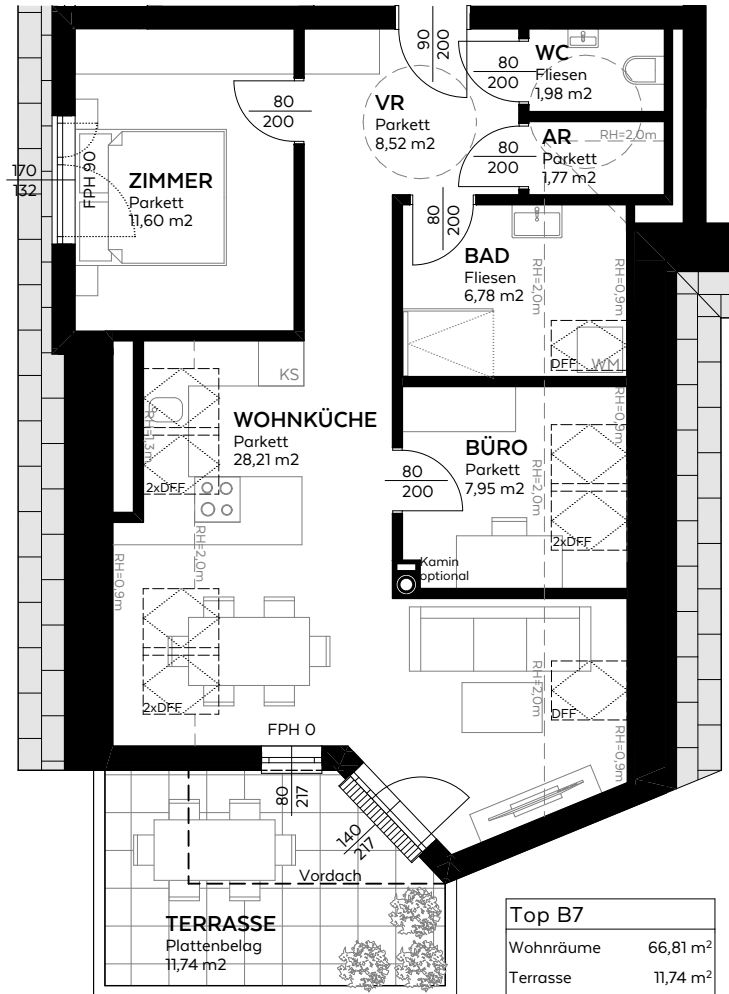
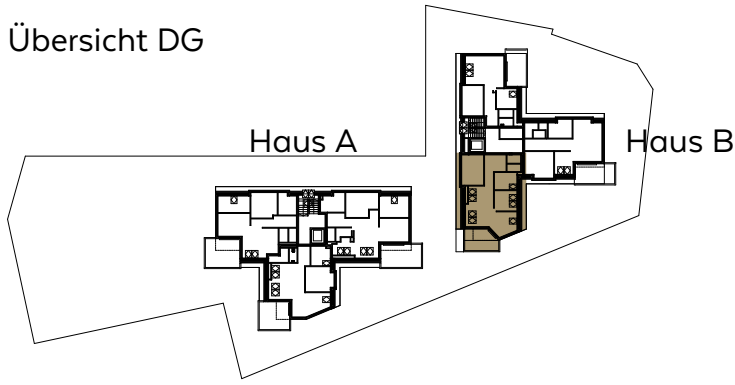
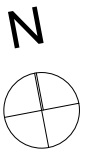


# Übersicht DG



Top B7	
Wohnräume	66,81 m <sup>2</sup>
Terrasse	11,74 m <sup>2</sup>
Keller	4,09 m <sup>2</sup>
<b>SUMME</b>	<b>82,64 m<sup>2</sup></b>



0 5m  
M=1:100



ADM-615  
M=1:100  
STAND 14.10.2022  
WWW.ALEGRE.AT

**Dachgeschoßwohnung**  
**TOP B7**  
Haus B - DG  
66,8m<sup>2</sup>

