

890/4

925/1

890/2

890/5

Garageneinfahrt

Eingang

890/13

9.50

10.13

5.00

10.36

5.00

890/14

890/6

9.50

890/7

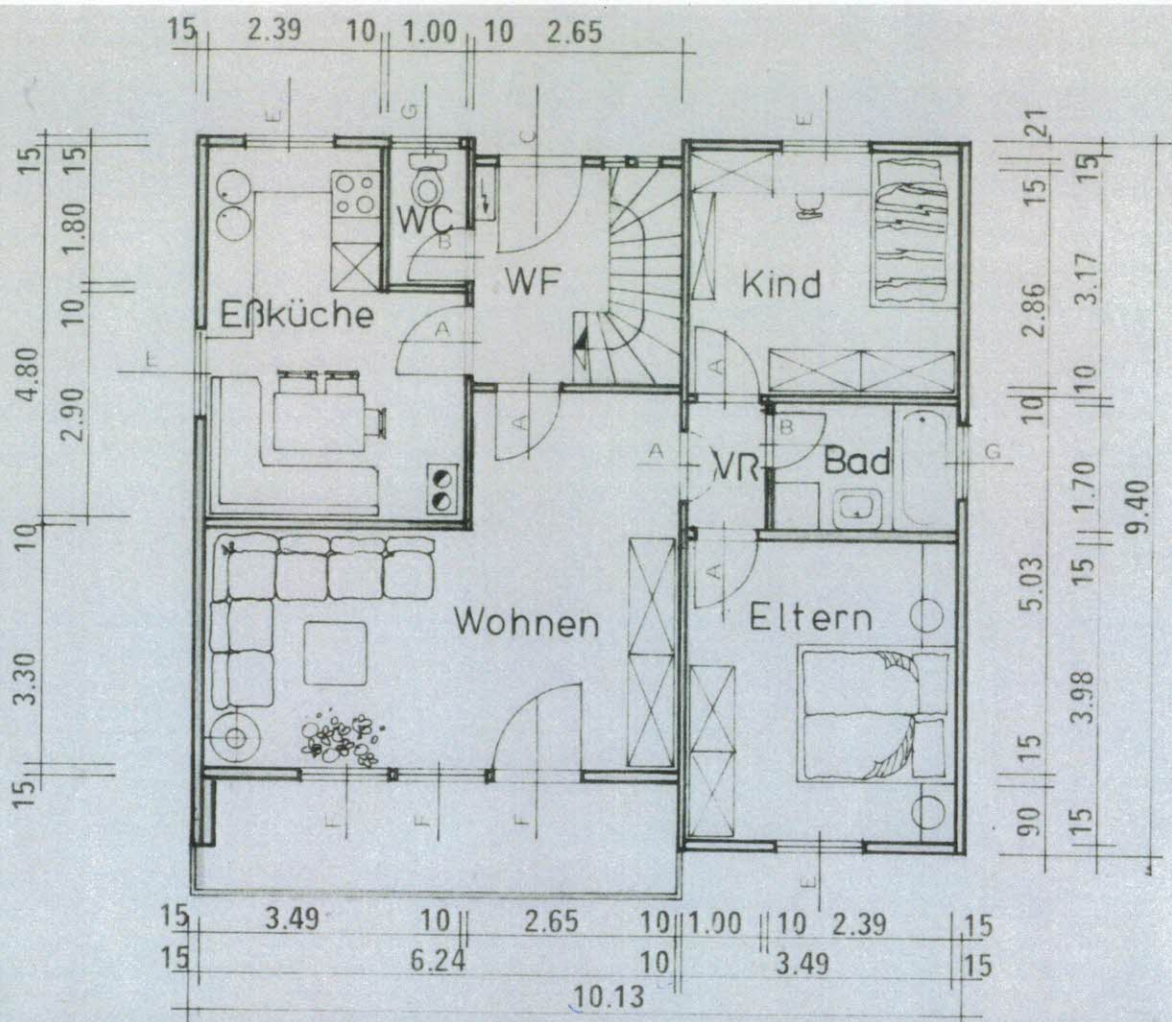
890/15

866/1

LAGEPLAN 1:500





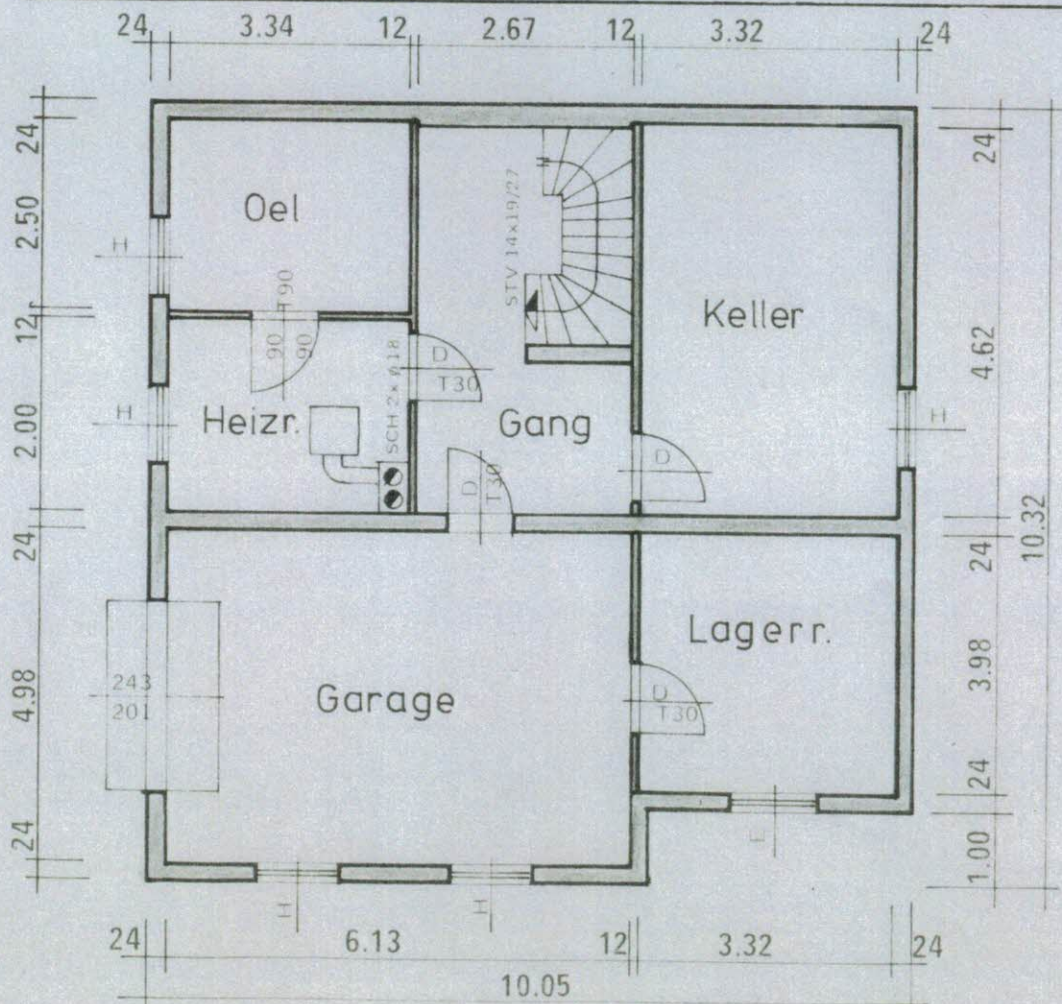


**TUREN**

- A 86,5/200
- B 70 /200
- C 105 /212,5
- D 90 /200

**FENSTER**

- E 117/129,5
- F 117/212,5
- G 95/ 70
- H 100/ 50



Erdgeschoß

Kellergeschoß

