



BÖRSEPLATZ 1
IMPERIAL LIVING

INTERIOR FIT-OUT & MATERIALS

TELEGRAFEN
CENTRALE



— ······ — ······ — ······ — ······ — ······ — ······ — ······ — ······ — ······ — ······ —
K.K.

BÖRSEPLATZ 1

IMPERIAL LIVING



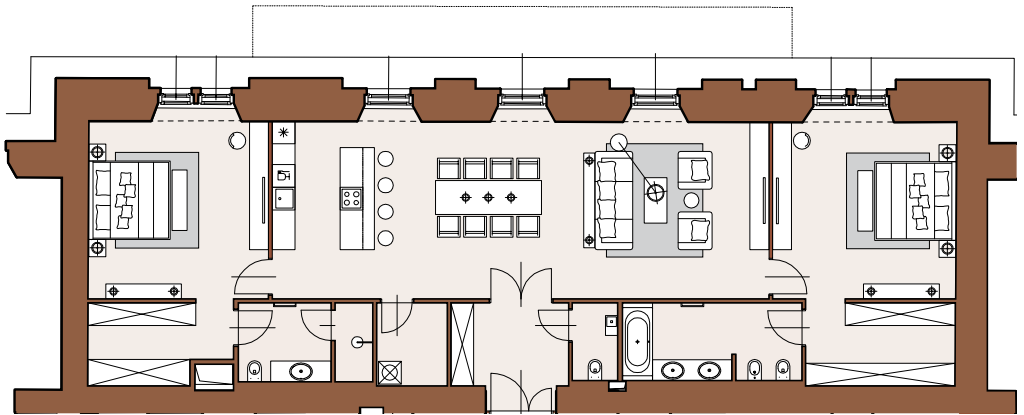


» MODERN CLASSIC «





GENERAL FIT-OUT “MODERN CLASSIC”



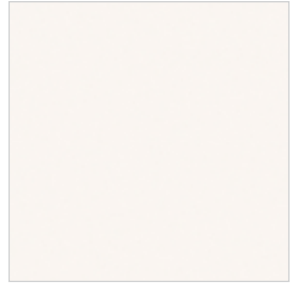
Sample: “Modern Classic” apartment – size approx. 155 sqm



PARQUET:
Trapa, Premium, natural oak
Wear layer: 4mm
Pattern: herringbone
Size: 14 x 67.50cm



SKIRTING BOARDS
(symbolic photo):
Profile, white, RAL 9010.



WALLS AND CEILINGS:
Dispersion paint, white, RAL 9010
Latex paint, white,
RAL 9010



STUCCO CORNICE:
e.g.: Wiener Stuckmanufaktur, G0009-S, RAL 9010 H = 19.8cm
or H = 29cm



INTERIOR DOORS:
Alt Wien design, to be ordered
via joiner
Height up to 250cm



SWITCHES;
Jung, LS 990, glossy white

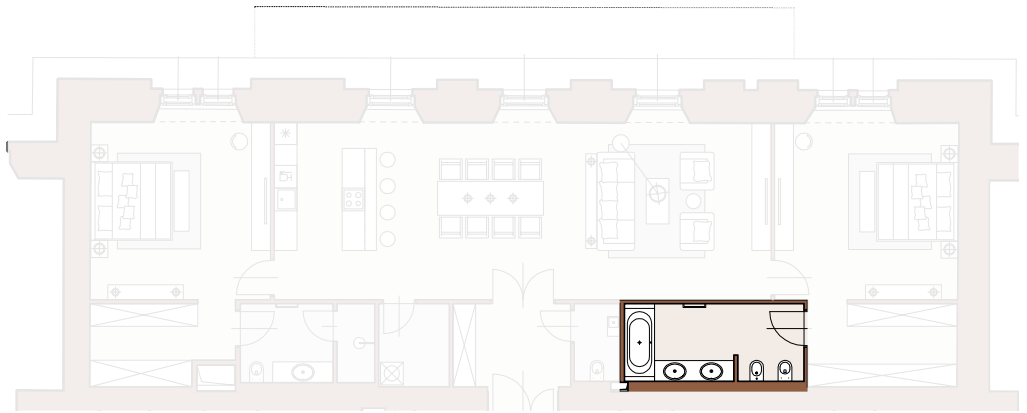


DOOR HARDWARE:
Alt Wien, chromed

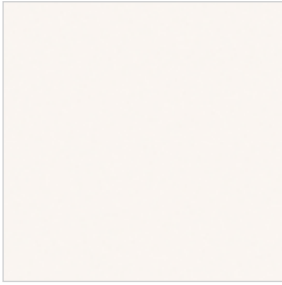


**RECESSED SPOTS (where
planned):**
Deltalight, deep, white

BATHROOM “MODERN CLASSIC”



Sample bathroom



WALLS (where painted) and
CEILING:
Latexanstrich RAL 9010
bzw. an Fliesenfarbe angepasst



WALL and FLOOR COVER-
ING: FINE STONEWARE:
Cotto d'Este, Exedra, Calacatta
Size: 100 x 300 or
100 x 100 cm



UNDERCOUNTER SINK:
Villeroy & Boch, Architectura



TOILET PAPER HOLDER:
Fir



REPLACEMENT TOILET
PAPER HOLDER
Fir



(Wall mounted) TOILET
BRUSH HOLDER:
Fir



BIDET (where possible): Villeroy
& Boch, Subway

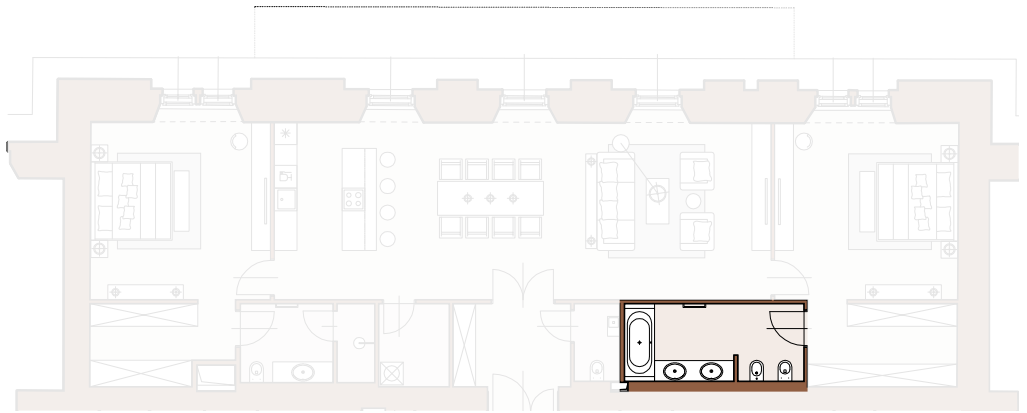


TOILET:
Villeroy & Boch, Subway



FLUSH PLATE:
Geberit, Omega 30

BATHROOM “MODERN CLASSIC”



Sample bathroom



VAR-A BUILT-IN BATHTUB (where possible):
BATHTUB: Bette, Schmidem II



VAR-A BUILT-IN BATHTUB
(where possible):
BATHTUB FAUCET:
Fir, Cora 35 (without hand
shower)



VAR- B FREESTANDING BATHTUB (where possible):
BATHTUB: Bette, Betteart



VAR- B FREESTANDING
BATHTUB (where possible):
BATHTUB FAUCET:
Fir, New Cleo



MIXER and DIVERTER:
Fir, Cora 35

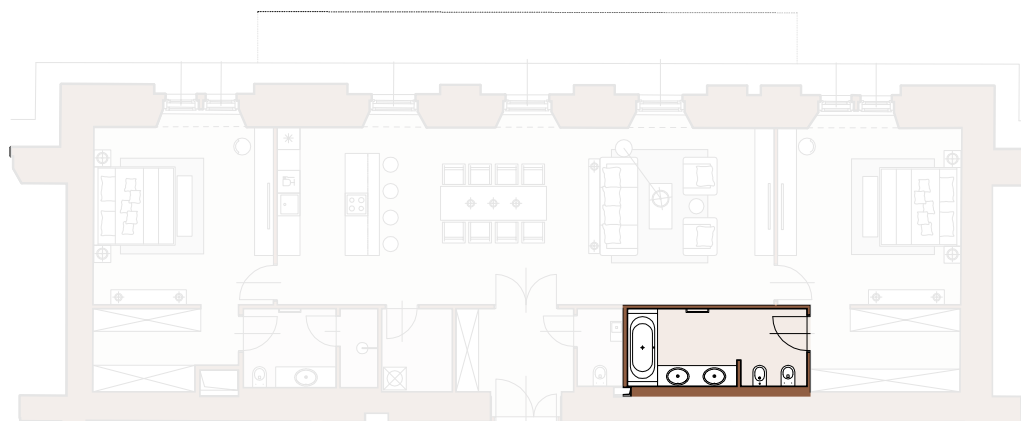


SHOWER SET:
Fir, Cora 35



RAIN SHOWER (wall-moun-
ted): Fir, Easy Showers Diame-
ter: 15.00cm or 22.50cm
(depending on the structural
design)

BATHROOM “MODERN CLASSIC”



Sample bathroom



SINK CONSOLE (symbolic photo): with chromed legs and shelf, undercounter sink



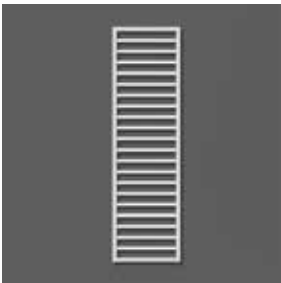
WALL-MOUNTED SINK FAUCET:
Fir, Cora 35



BIDET FAUCET:
Fir, Cora 35



MIRROR and LIGHTING:
Falper; incl. anti-fog system and integrated lighting



TOWEL RADIATOR
Zehnder, Subway, chromed



MAKE-UP MIRROR:
Sam, illuminated

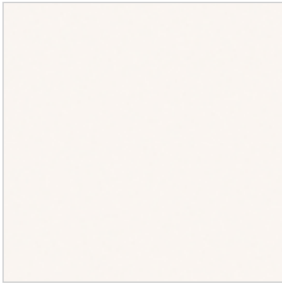


SHOWER DRAIN:
Hutterer and Lechner, coverable with fine stoneware

GUEST TOILET “MODERN CLASSIC“



Sample toilet



WALLS (where painted) and CEILING:
Latex paint RAL 9010
or matching the tile color



WALL and FLOOR COVERING: FINE STONEWARE:
Cotto d'Este, Exedra, Calacatta
Size: 100cm x 300cm or
100cm x 100cm



SINK:
Clou, Mini Wash Me



WALL-MOUNTED SINK FAUCET:
Fir, Cora 35, length to be adapted to sink size



TOILET:
Villeroy & Boch, Subway



FLUSH PLATE:
Geberit, Omega 30



TOILET PAPER HOLDER:
Fir



REPLACEMENT TOILET PAPER HOLDER
Fir



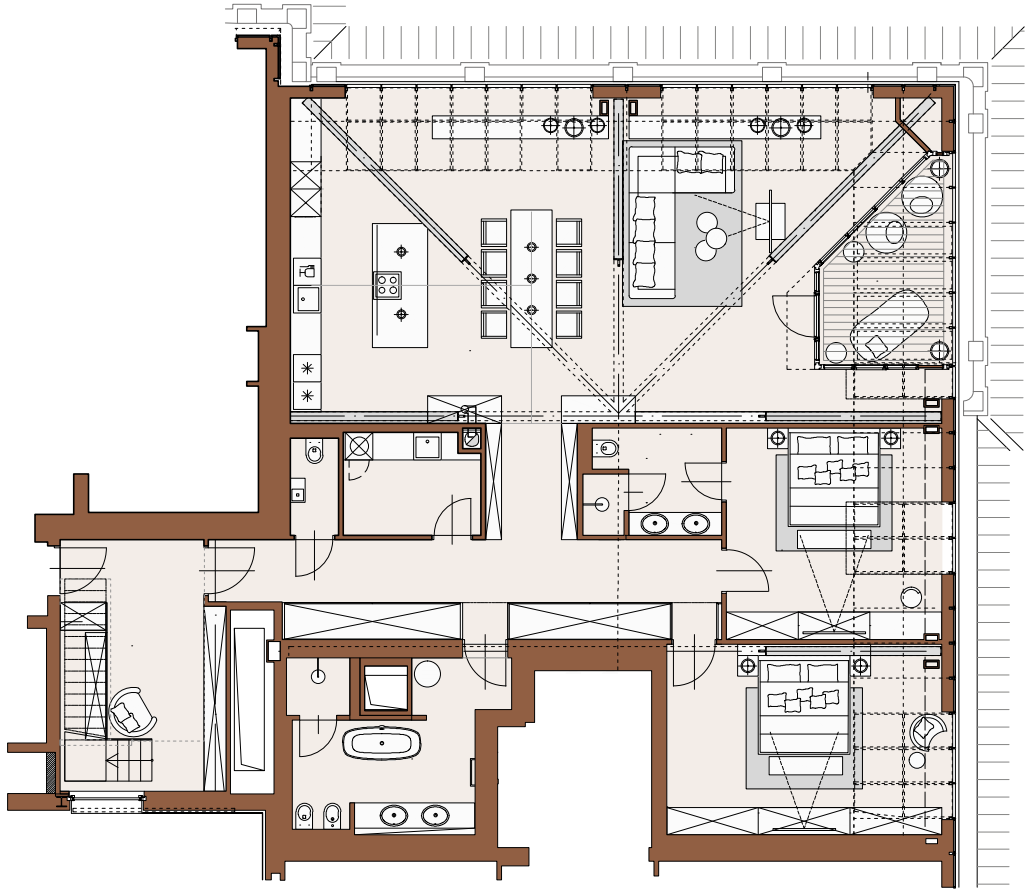
TOILET BRUSH HOLDER (wall-mounted):
Fir

» URBAN COOL «





GENERAL DESIGN “URBAN COOL”



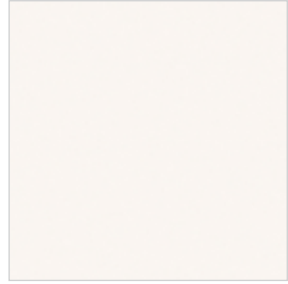
Sample: “Urban Cool” apartment, size approx. 260 sqm



DOOR HARDWARE
Olivari, Lotus Q,
Surface: super-anthracite, matte



SKIRTING BOARDS:
Flush with the wall, painted in
wall color - RAL 9010



WALLS and CEILINGS:
Dispersion paint, white, RAL
9010
Latex paint, white, RAL 9010



INTERIOR DOORS:
e.g.: Tre-Piu, Planus 7, minimum height: 210 cm



SWITCHES:
Jung, LS 990, black - matte

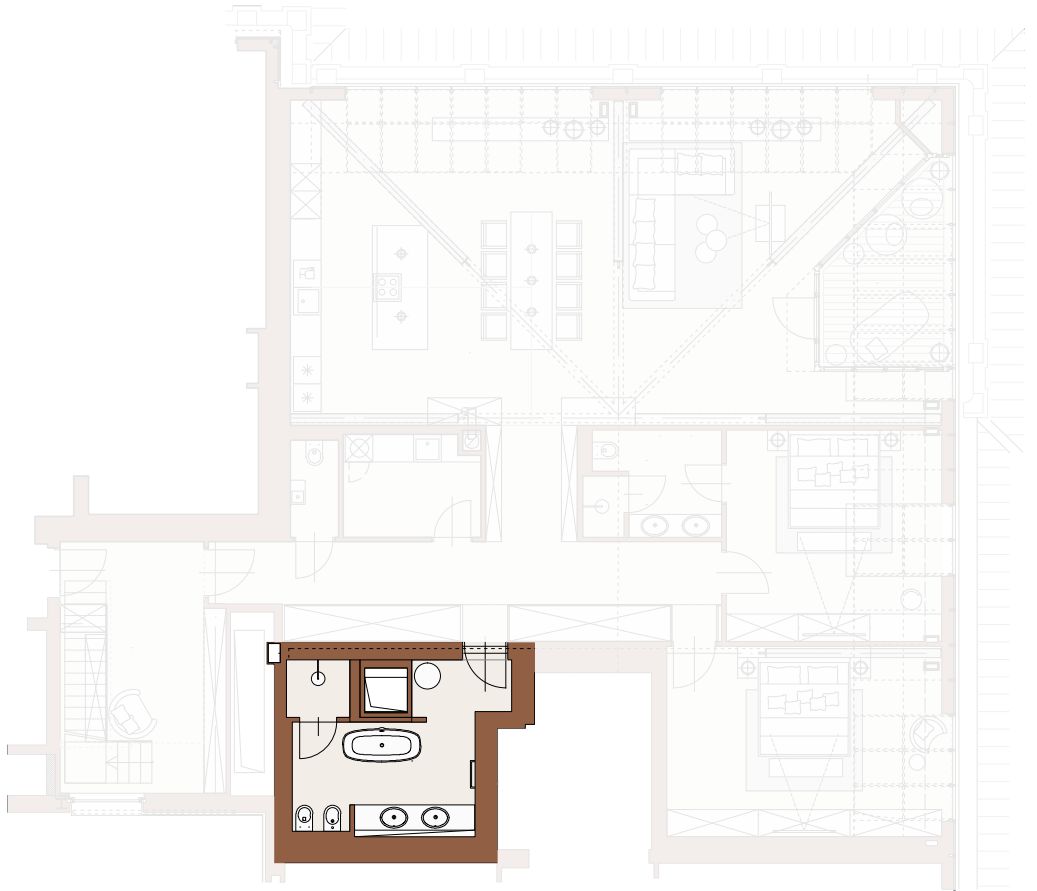


PARQUET (symbolic photo):
pattern: planked

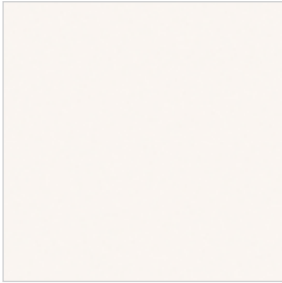


PARQUET:
Trapa, Premium, oak extra white,
Wear layer 4 mm
Pattern: planked
Size: 22 x 240cm

BATHROOM “URBAN COOL”



Sample bathroom



WALLS (where painted) and CEILING: Dispersion paint, white, RAL 9010. Latex paint, white, RAL 9010 or matching the tile color



WALL and FLOOR COVERING FINE STONEWARE: Land Porcelanico: Civic, grey color
Size: 45 x 90cm



WALL TILES FINE STONEWARE: Living Ceramics, Mayolica
Size: 7.5 x 15cm or 7.5 x 30cm



SINK FAUCET:
Agape, SEN



SINK:
Design inspired by Quattro Zero, Company Falper; to be produced by joiner (RAL color matching the faucets)



MAKE-UP MIRROR:
Sam, illuminated



MIXER AND DIVERTER:
Agape, Sen
(push rod not included!)

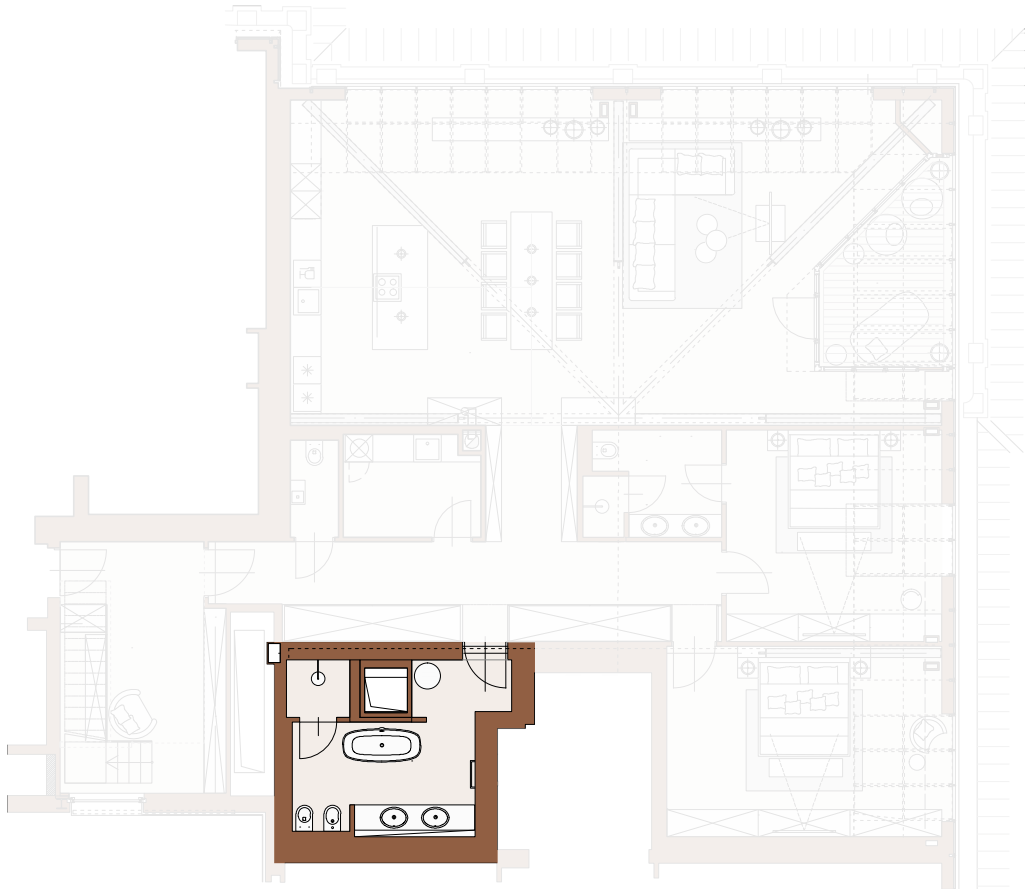


RAIN SHOWER:
Agape, Sen



SHOWER DRAIN
Hutterer and Lechner, coverable with fine stoneware

BATHROOM “URBAN COOL”



Sample bathroom



BIDET (where possible):
Villeroy & Boch, Subway



TOILET:
Villeroy & Boch, Subway



FLUSH PLATE:
Agape,
Surface: black - matte



**TOILET BRUSH AND PAPER
HOLDER:**
Agape, Sen



MIRROR and LIGHTING:
Falper; incl. anti-fog system and integrated lighting



TUB FAUCET:
Agape, Sen, (incl. towel rod on
the side)

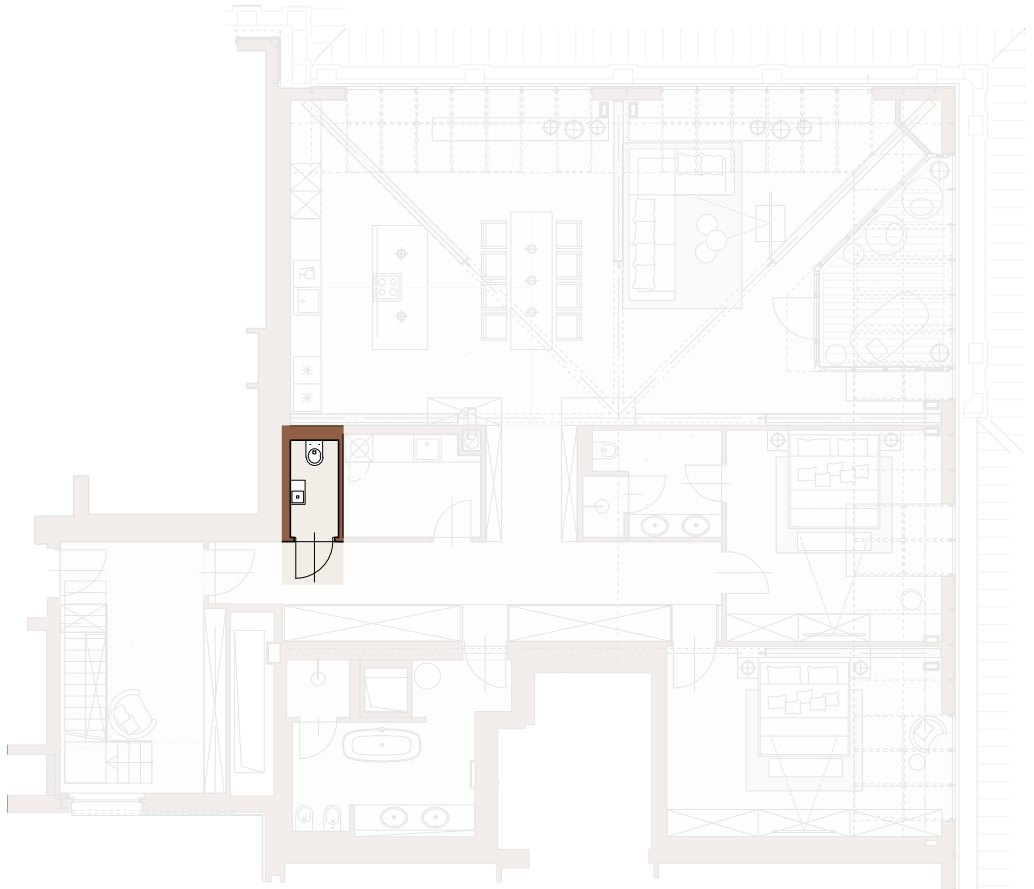


BATHTUB:
Falper, Level 45

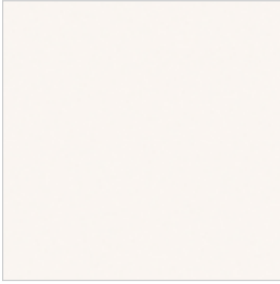


TOWEL RADIATOR:
Zehnder, Subway, color: RAL
color matching faucet

GUEST TOILET “URBAN COOL”



Sample toilet



WALLS (where painted) and CEILING: Dispersion paint, white, RAL 9010
Latex paint, white, RAL 9010 or matching the tile color



WALL and FLOOR COVERING FINE STONEWARE:
Land Porcelanico: Civic, grey color
Size: 45 x 90cm



WALL COVERING FINE STONEWARE:
Living Ceramics, Mayolica Size: 7.5 x 15cm or 7.5 x 30cm



SINK FAUCET:
Agape, Sen



SINK:
Clou, Mini Wash Me



TOILET:
Villeroy & Boch, Subway



FLUSH PLATE:
Agape,
Surface: black - matte



TOILET BRUSH AND PAPER HOLDER:
Agape, Sen





TELEGRAFEN
CENTRALE



K.K.

BÖRSEPLATZ 1

IMPERIAL LIVING

Media owner

Börseplatz 1 GmbH & Co KG
Laurenzerberg 2, A-1010 Wien

Tel.: +43 (0)5 03 299
info@boerseplatz1.com
www.boerseplatz1.com

Firmenbuchnummer: FN 370389 s
FGB: Handelsgericht Wien

UID: ATU 61490700

Published and produced in

Graz, Changes, print - and punctuation errors and other errors reserved.

Layout and Design

FOON GmbH, www.foon.at

image copyrights reserved

Disclaimer

The information in this brochure is non-binding and does not constitute a contract. The developer reserves the right to change any materials, structural components or services indicated herein, or replace them with materials, components or services of equivalent value. The developer expressly states that all particulars given in this document, or in sales plans, relating to structures, fixtures and fittings may therefore also not be considered binding, since changes may occur at any time on technical, financial or legal grounds, or in particular as a result of official regulations or requirements. Illustrations and photographs are to be considered indicative and may depict components, fixtures and fittings that are not included as standard in the purchase price. We furthermore state that the finished construction may deviate from that presented herein as regards colour, surface, material and structural design. Floor plans for kitchens and other equipment are illustrative. No liability shall therefore accrue to any legal entity named in this brochure or to any of their employees or legal representatives, and this brochure shall not be deemed to be the basis for any guarantee or warranty. In particular no warranty or liability shall be deemed to arise in relation to specific events, expectations or assumptions that may or may not occur or arise in the future. Börseplatz 1 GmbH & Co KG shall not be required to update, supplement, amplify or otherwise supply information relating to future changes in this brochure.

A project by
Börseplatz 1 GmbH & Co KG
Managed by



Exclusive sales agent
OTTO Immobilien GmbH

Riemergasse 8
A-1010 Wien



Tel.: +43 1 512 77 77 328
Mail: info@boerseplatz1.com

