

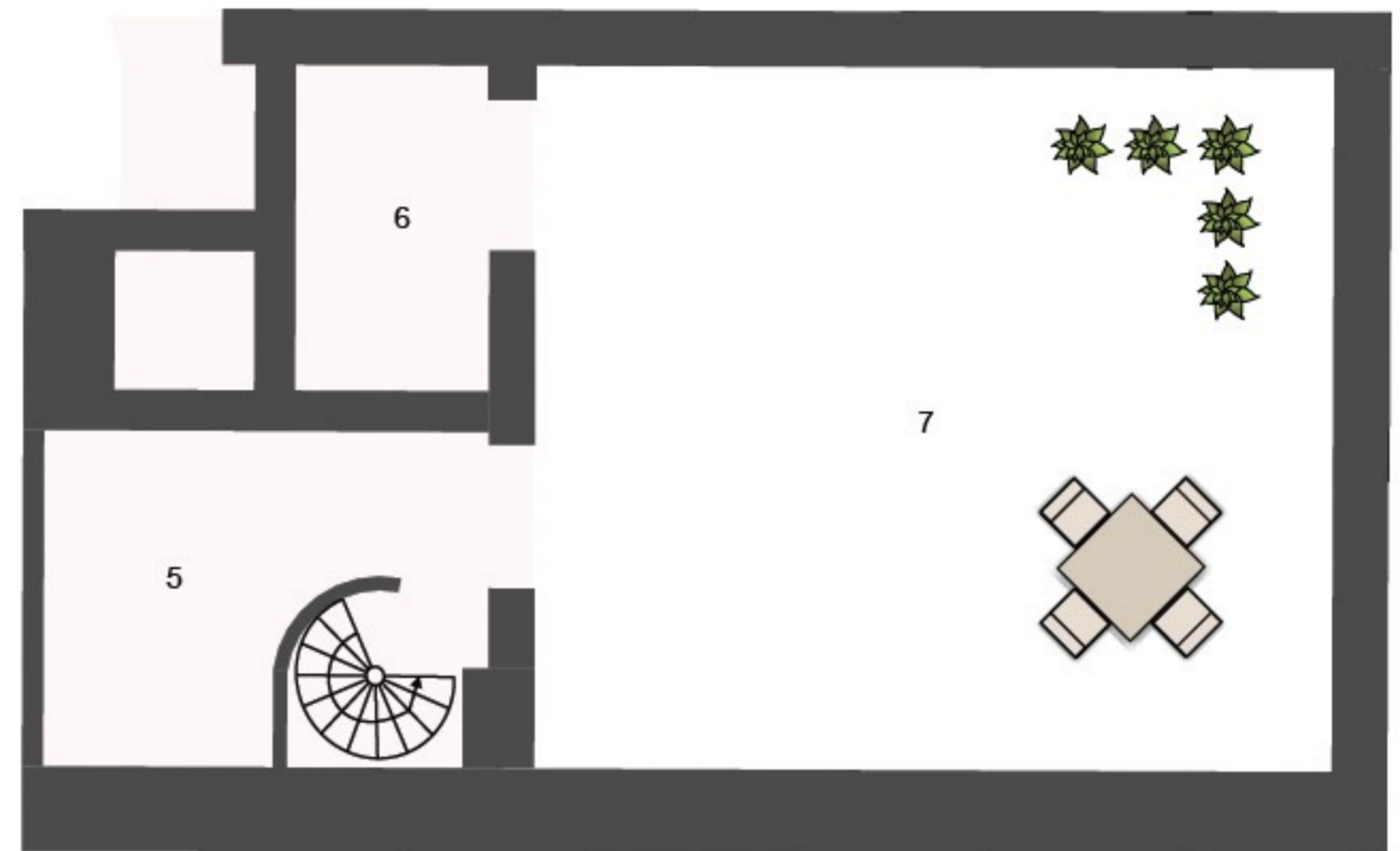
TOP 29

Lage DG
Zimmer 1

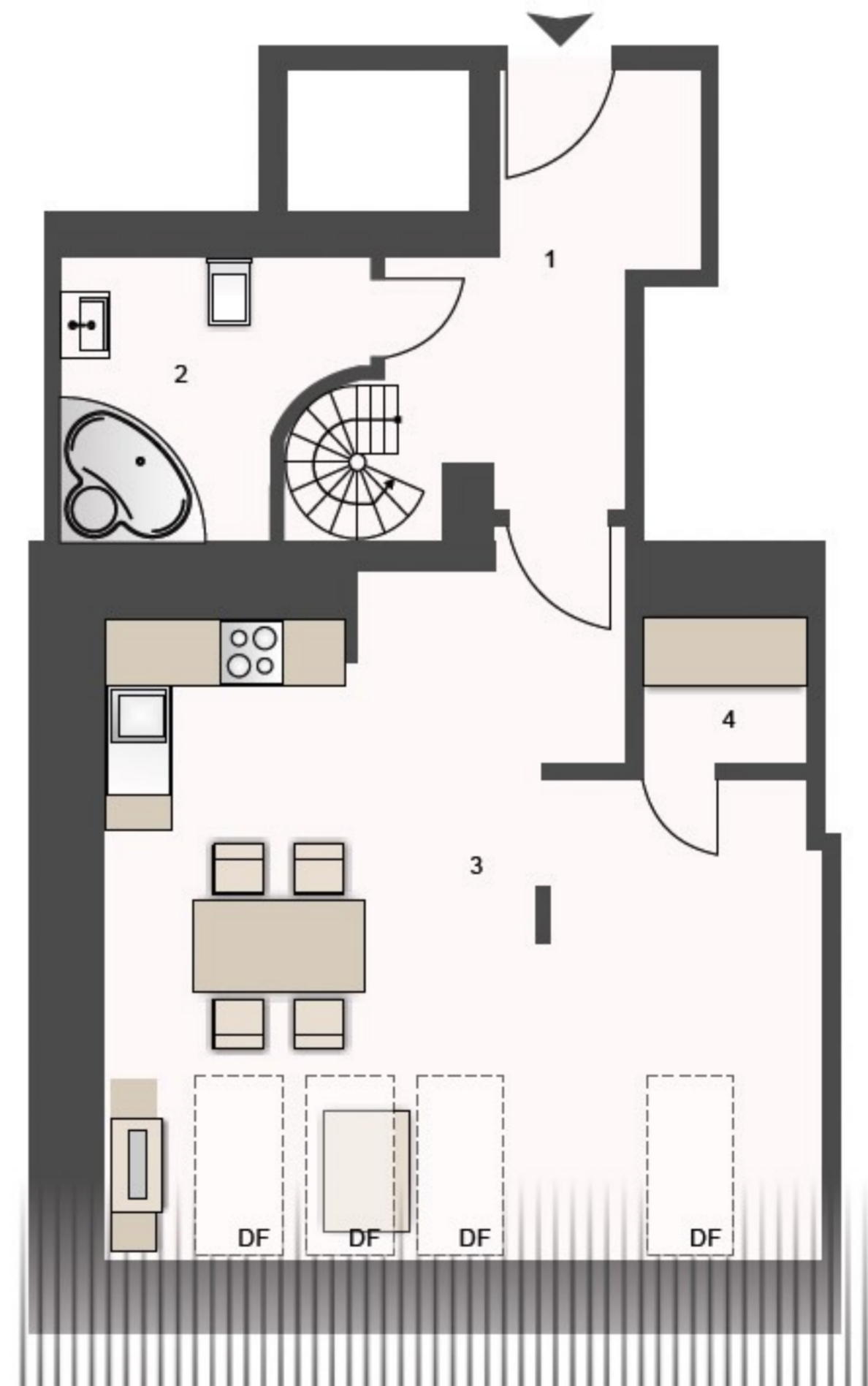
1.	Vorraum	6,89 m ²
2.	Bad + WC	4,52 m ²
3.	Wohnküche	27,65 m ²
4.	AR	1,47 m ²
5.	AR	6,33 m ²
6.	AR	3,32 m ²

Wohnnutzfläche 50,18 m²

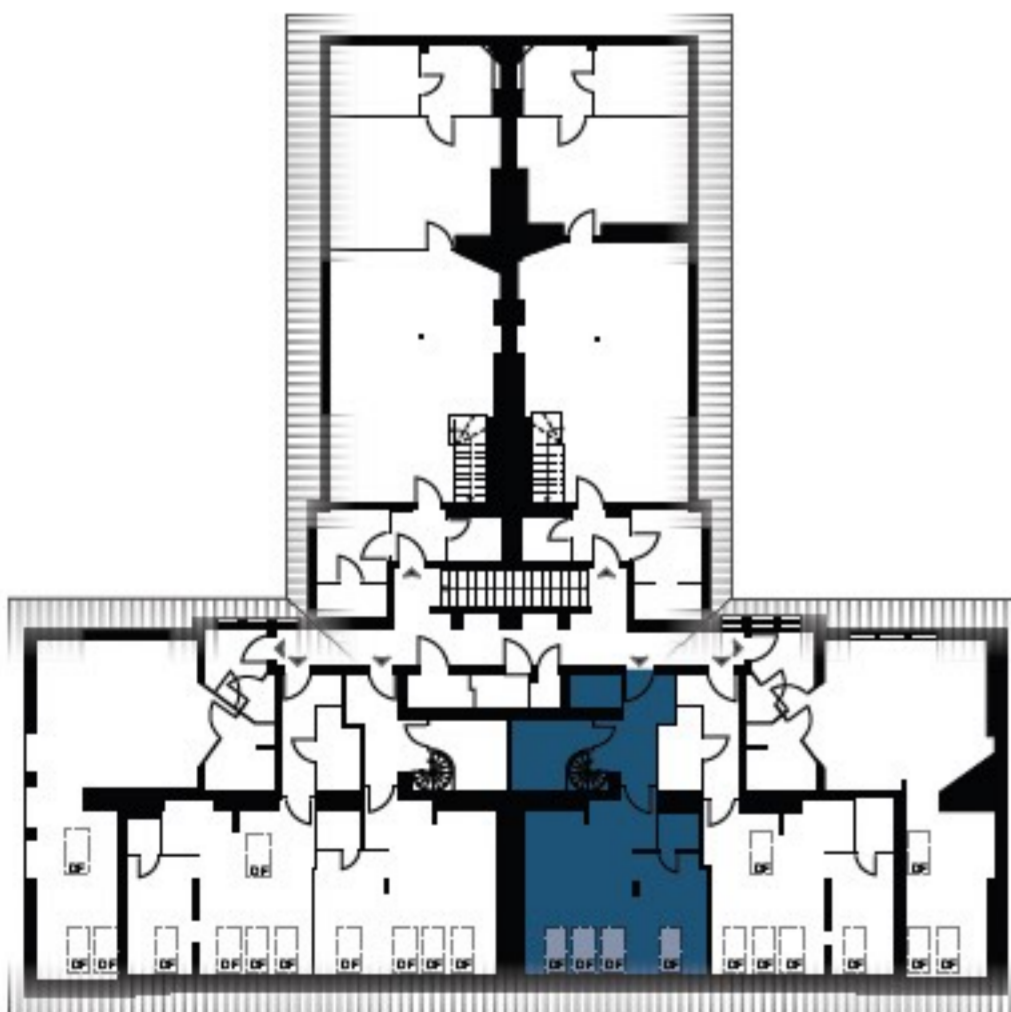
7.	Dachterrasse	29,33 m ²
----	--------------	----------------------



DACHTERRASSE



WOHNUNGSGRUNDRISS



ÜBERSICHTSPLAN