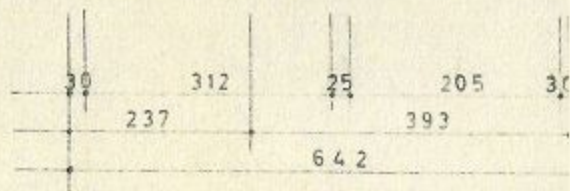
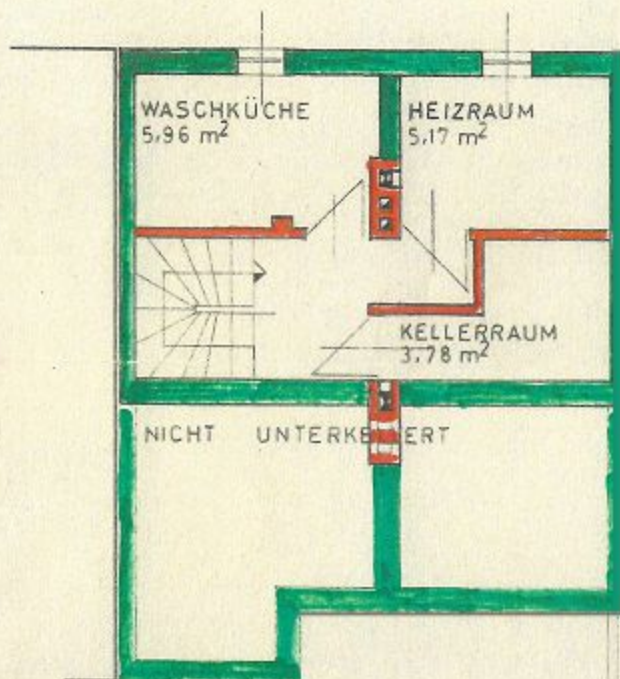
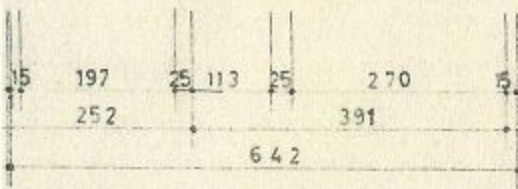
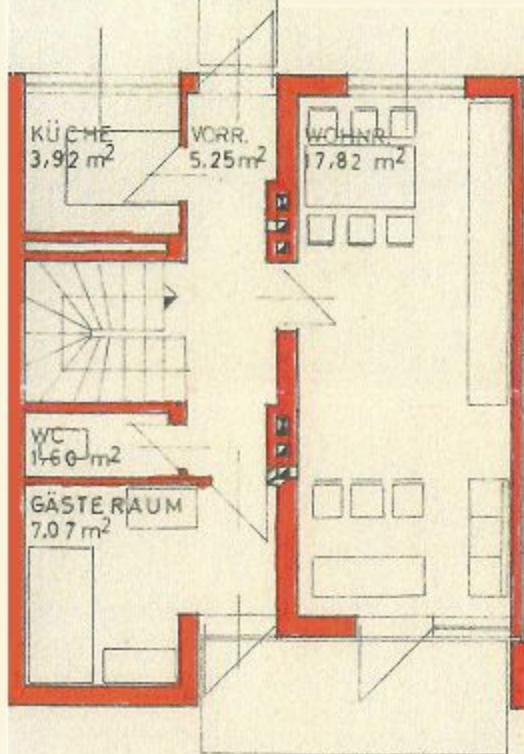


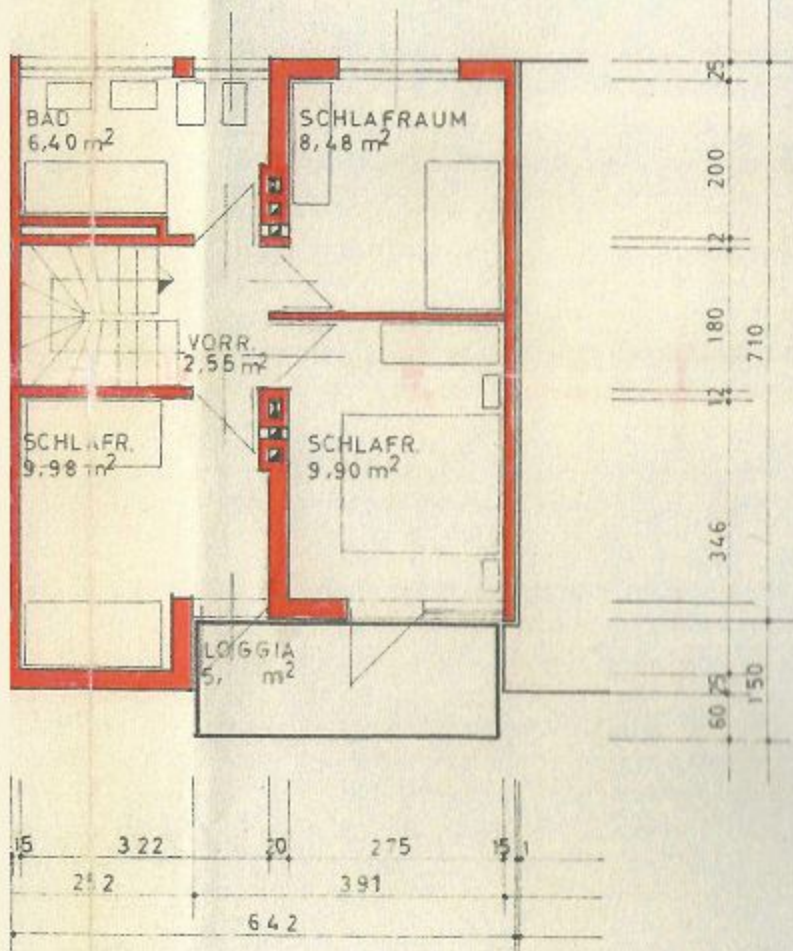
GRUNDRISS E KELLER-

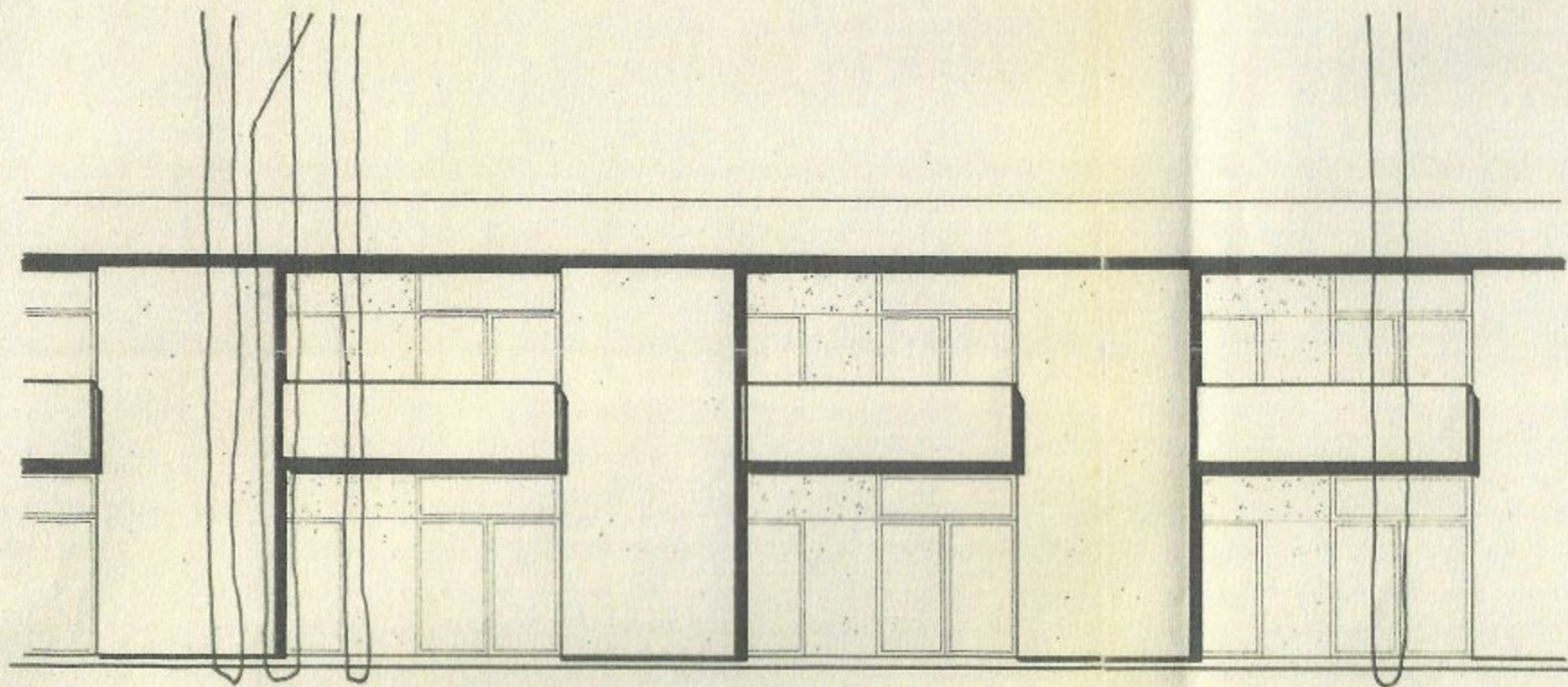


ERD-



OBERGESCHOSS





GARTENANSICHT (SÜD - WEST)

06
R

6 42 . 6 42 .

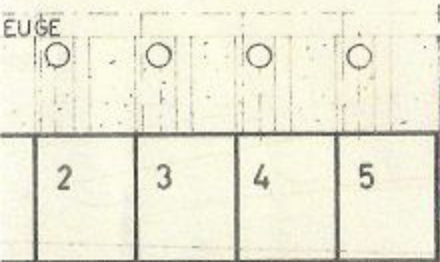
GRST. NR. 742 EZ. 106

EUGE

(749/16)

SEIFENABSCHIEDER

WENDEPLATZ



GRST. NR. 745 EZ. 88

GRST. NR

GRST. NR. 749 E.Z. 768

OFFENTL. GUT

GRST. NR. 2189 / 1

LINSBACH

USTUFE III

I

BAUSTUFE II

I

BAUSTUFE I

I

GRST. NR. 750/1 E.Z. 29

WEG